



KCDC

Korea Centers for Disease Control & Prevention

Updates on COVID-19 in Republic of Korea

30 May 2020

- As of 0:00, 30 May 2020, the total number of confirmed cases is 11,441 (including 1,247 imported cases), of which 10,398 cases have been discharged from isolation. Newly confirmed cases are 39 in total.

[Table 1. Total reported/tested cases]

Period (since 3 Jan)	Total	Tested positive (PCR)				Testing in progress	Tested negative (PCR)
		Confirmed	Discharged from isolation	Under isolation	Deceased		
As of 0:00 29 May (Fri)	885,120	11,402	10,363	770	269	24,557	849,161
As of 0:00 30 May (Sat)	902,901	11,441	10,398	774	269	26,298	865,162
Difference	(+)17,781	(+)39	(+)35	(+)4	0	(+)1,741	(+)16,001

[Table 2. Imported cases in Korea (as of 0:00, 30 May 2020)]

	Total	Region/Country						Where confirmed		Nationality	
		China	Asia ex-China	Europe	Americas	Africa	Australia	Point of Entry	Community	Korean	Other
New	12	0	6	3	3	0	0	5	7	10	2
Total	1,247	19 (1.5%)	220 (17.6%)	472 (37.9%)	527 (42.3%)	8 (0.6%)	1 (0.1%)	534 (42.8%)	713 (57.2%)	1,094 (87.7%)	153 (12.3%)

* Figures may change based on findings from ongoing local epidemiological investigation efforts.

- Of the 39 new cases, 12 were imported cases and 27 were locally transmitted cases.
 - Of the 12 imported cases, 3 are from Europe, 3 from America, 3 from UAE, 2 from Pakistan and 1 from Bangladesh.
- Related to the Coupang logistics center cluster in Bucheon-si, Gyeonggi Province, in total, 108* cases have been confirmed as of 11:00am today. Self-quarantine and testing is underway for all workers who have worked at the logistics center since 12 May.
 - * (By chain of transmission) 73 workers of the logistics center; 35 contacts / (by region) Gyeonggi=47, Incheon=42, Seoul=19
- At the Happy nursing home located in Gwang-ju city, Gyeonggi province, 1 caretaker got confirmed after having symptoms and getting screened on May 28th at the screening clinic. During the contact investigation, 4 contacts were additionally confirmed, bringing the total to 5* cases.
 - * (By chain of transmission) 2 caretakers, 3 clients
- During the investigation of Yonsei Naro Academy in Yeongdeungpo-gu, Seoul city, an entire family at the Gyeyang district in Incheon city has been confirmed. A family member of a confirmed case(teacher) from Yonsei Naro Academy who runs a real estate agency, was their coworker. Further epidemiological investigation on additional contacts and chain of transmission in ongoing.



KCDC

Korea Centers for Disease Control & Prevention

Updates on COVID-19 in Republic of Korea

30 May 2020

- As of 12:00 today, there are 269 confirmed cases in total related to the nightclubs, including 3* new cases since 12:00 yesterday.

* (Incheon) 2 contacts from Noonoppi academy students, 1 family member of the contact from FINE S.B.S Sauna

- **(By region)** Seoul City=133, Gyeonggi Province=59, Incheon City=52, Chungbuk Province=9, Busan City=4, Daegu City=2, Gyeongnam Province=2, Gangwon Province=2, Jeonbuk Province=2, Daejeon City=1, Chungnam Province=1, Gyeongbuk Province=1, Jeju Province=1
- **(By chain of transmission)** Club visitors=96; Contacts (family/acquaintance/coworkers/etc)=173
- **(By age group)** [0-18]=30; [19-29]=132; [30-39]=36; [40-49]=22; [50-59]=21; [60+]=28
- **(By sex)** male 202, female 67

- In light of the recent rise in local transmissions in the Seoul Metropolitan Region, KCDC urged people in the capital region to refrain from social gathering or visiting any enclosed/confined/crowded spaces that are frequented by many people.

- People who cannot avoid visiting an enclosed/crowded space for an essential reason should carefully follow personal hygiene measures including keeping 2 meters of distance from other people, wearing a facemask, avoiding handshakes, washing hands, and not touching eyes, nose, or mouth with their hands.
- Persons belonging to high-risk groups (including elderly, pregnant women, persons with chronic illness) should especially avoid any poorly ventilated enclosed space frequented by many people. If such a situation cannot be avoided for an essential reason, it is highly important to wear a facemask.

- Anyone who has come in close contact with a large number of unspecified persons in an enclosed/confined space such as clubs or bars need to be tested at a screening clinic through public health center or 1339 call center.

- KCDC urged people to visit a screening clinic and get tested especially if two or more persons within a household or social group develop COVID-19 suspected symptoms.

“5 Basic Infection Prevention Rules for Everyone”

- (1) Stay home for 3-4 days if you get sick.
- (2) Keep a distance of two arms’ length between you and other people.
- (3) Wash your hands for 30 seconds. Cough/sneeze into your sleeve.
- (4) Ventilate your space at least twice a day and disinfect regularly.
- (5) Keep in touch with family and friends while maintaining physical distancing.



KCDC

Korea Centers for Disease Control & Prevention

Updates on COVID-19 in Republic of Korea

30 May 2020

[Table 3: Regional distribution and epidemiological links of the confirmed cases]

Region	Confirmed cases									Other major clusters
	Total	Imported cases	Clusters					Other*	New cases	
			Sub-total	Shin-cheonji	Other clusters	Contacts of confirmed cases	Imported cases			
Seoul	855	276	542	8	447	18	69	37	9	Itaewon clubs (133), Coupang (19), biblical language study meeting (6) , Samsung Medical Center (7), Guro-gu call center (98), Dong-an Church-PC Cafe (20), Manmin Central Church (41), etc.
Busan	146	28	88	12	57	18	1	30	1	Itaewon clubs (4), Onchun Church (39), Suyeong-gu Kindergarten (5), etc.
Daegu	6,882	27	6,118	4,510	684	920	4	737	2	Itaewon clubs (3), Second Mi-Ju Hospital (196), Hansarang Convalescent Hospital (128), Daesil Convalescent Hospital (100), Fatima Hospital (37), etc.
Incheon	203	48	149	2	134	6	7	6	5	Itaewon clubs (52) , Coupang (40), Guro-gu call center (20), etc.
Gwangju	32	16	16	9	0	1	6	0	2	
Daejeon	45	14	22	2	12	8	0	9	0	Korea Forest Engineer Institute (3), etc.
Ulsan	50	19	24	16	2	3	3	7	0	
Sejong	47	4	42	1	38	3	0	1	0	Ministry of Oceans and Fisheries (30), gym facilities (8)
Gyeonggi	828	184	595	29	450	53	63	49	13	Itaewon clubs (59), Coupang (45) , biblical language study meeting (7), first responder (3), Grace River Church in Seongnam (72), Guro-gu call center-Bucheon SaengMyeongSu Church (48), Uijeongbu St. Mary's Hospital (50), etc.
Gangwon	57	16	34	17	17	0	0	7	1	Itaewon clubs (2) , Apartments in Wonju City (3), Uijeongbu St. Mary's Hospital (10), etc.
Chungbuk	60	8	42	6	27	7	2	10	0	Itaewon clubs (9), Goesan-gun Jangyeon-myeon (11), etc.
Chungnam	146	13	123	0	121	1	1	10	0	Gym facilities in Cheonan (103), research center in Seosan (9), etc.
Jeonbuk	21	10	6	1	5	0	0	5	0	Itaewon clubs (2)
Jeonnam	19	11	5	1	1	2	1	3	1	
Gyeongbuk	1,379	14	1,233	566	477	190	0	132	0	Gumi Elim Church (8), Cheongdo Daenam Hospital (120), Bonghwa Pureun Nursing Home (68), pilgrimage to Israel (49), Gyeongsan Seo Convalescent Hospital (66), Yecheon-gun (41), etc.
Gyeongnam	123	17	87	32	48	6	1	19	0	Itaewon clubs (2), Geochang Church (10), Geochang Woonyang-myeon (8), Wings Tower (10), etc.
Jeju	14	8	2	0	1	0	1	4	0	
Airport	534	534	0	0	0	0	0	0	5	
Total	11,441 (%)	1,247 (57.1)	9,128 (14.3)	5,212 (7.1)	2,521 (0.0)	1,236 (7.1)	159 (28.6)	1,066 (0.0)	39	

* Not classified into a cluster or under investigation

※ The interim classification is based on the reporting location, which may change depending on further epidemiological investigation.



KCDC

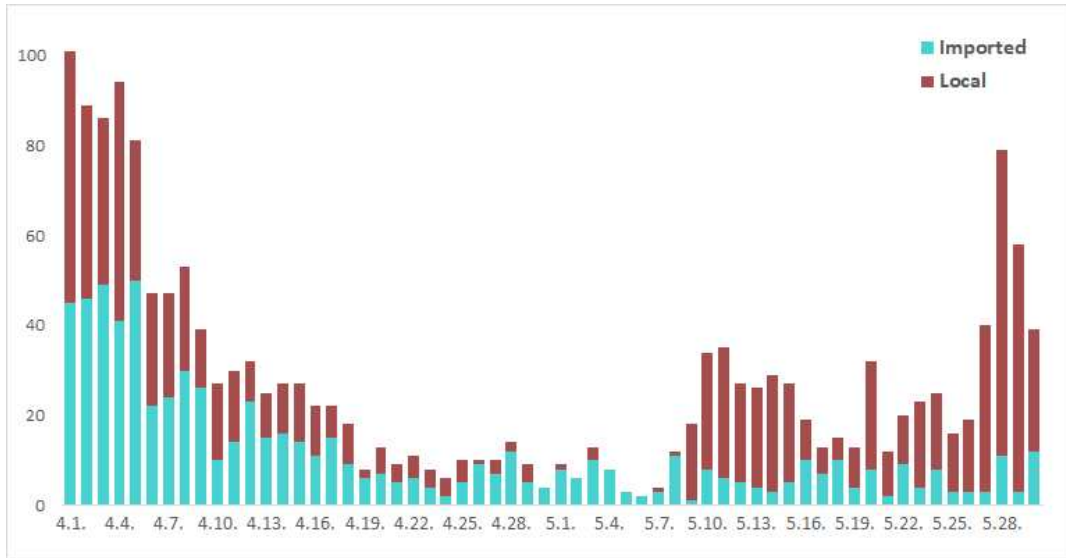
Korea Centers for Disease Control & Prevention

Updates on COVID-19 in Republic of Korea

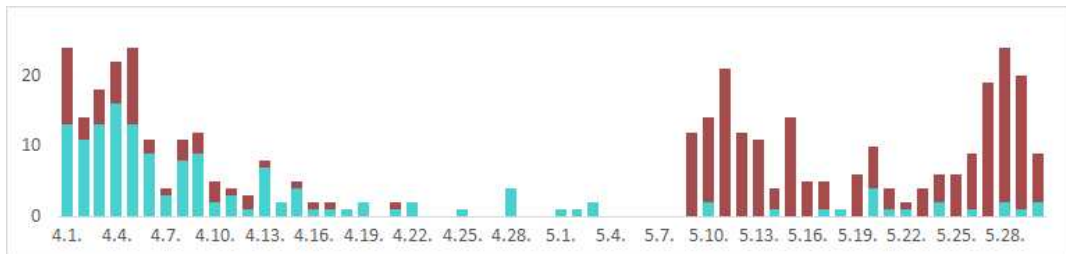
30 May 2020

[Figure 1: Daily new confirmed cases by chain of transmission]

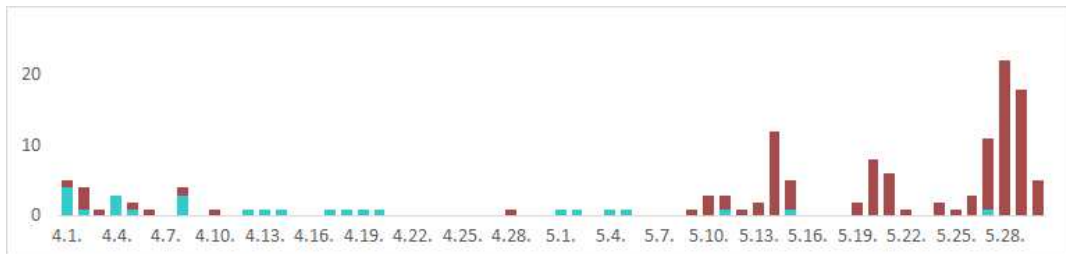
TOTAL



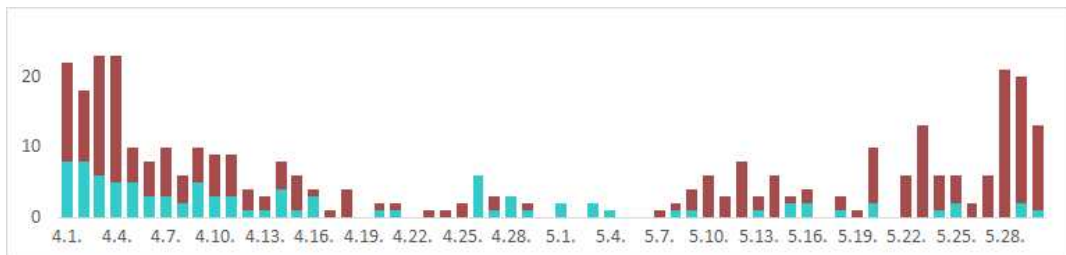
Seoul City



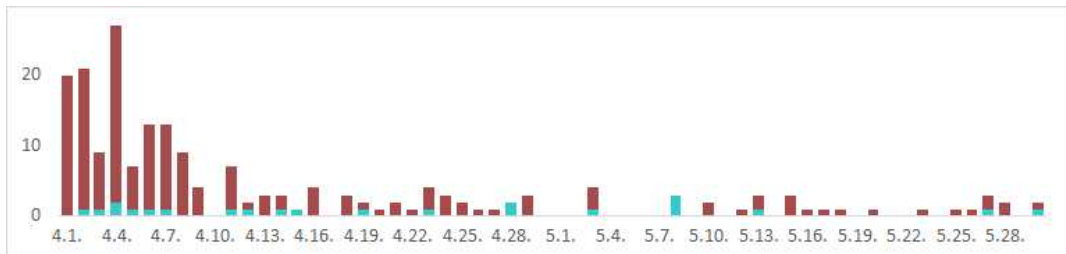
Incheon City



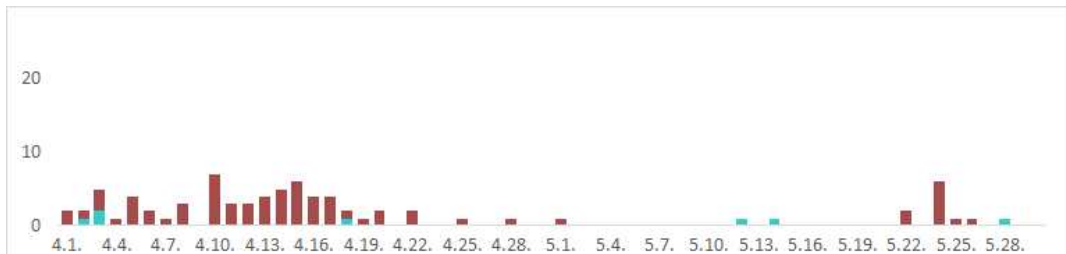
Gyeonggi Province



Daegu City



Gyeongbuk Province





KCDC

Korea Centers for Disease Control & Prevention

Updates on COVID-19 in Republic of Korea

30 May 2020

[Table 4: Age distribution of severe cases]

Age group	Total	Severe (%)	Very severe (%)
Total	10	4 (100.0)	6 (100.0)
80 and above	3	2 (50.0)	1 (16.7)
70-79	2	1 (25.0)	1 (16.7)
60-69	2	1 (25.0)	1 (16.7)
50-59	1	0 (0.0)	1 (16.7)
40-49	2	0 (0.0)	2 (33.3)
30-39	0	0 (0.0)	0 (0.0)
20-29	0	0 (0.0)	0 (0.0)
10-19	0	0 (0.0)	0 (0.0)
0-9	0	0 (0.0)	0 (0.0)

[Figure 2: New cases (for last 2 weeks) by chain of transmission]

