

- As of 0:00, 13 July 2020, the total number of confirmed cases is 13,497 (including 1,872 imported cases), of which 12,204 cases have been discharged from isolation. There are 19 new local cases, 43 new imported cases, and 0 new deaths.

Period (since 3 Jan)	Total	Tested positive (PCR)				Testing in progress	Tested negative (PCR)
		Confirmed	Discharged from isolation	Under isolation	Deceased		
As of 0:00 12 July (Sun)	1,402,144	13,417	12,178	950	289	21,830	1,366,897
As of 0:00 13 July (Mon)	1,408,312	13,479	12,204	986	289	21,845	1,372,988
Difference	(+)6,168	(+)62	(+)26	(+)36	-	(+)15	(+)6,091

- The current state* of major local clusters as of today (as of 12:00, 13 July) are as follows:

* The specific figures below may differ from the daily reported statistics (which are based on figures as of 0:00 today) or figures disclosed by local municipalities due to factors such as report timing and differences in the time period considered

- Related to the Gwangmyeong Soo Clinic Center in Gwangmyeong-si, Gyeonggi Province, 2 dialysis patients and 2 family members of confirmed case were additionally confirmed after the index case (a dialysis patient) was confirmed on 10 July. In total, 5* cases have been confirmed.
* 91 tested (Soo Clinic Center staff, visitors, and patients), 2 confirmed, others tested negative
- Related to a family in Yeongtong-gu, Suwon City, 2 cases were confirmed on 11 July. 4 cases were additionally confirmed at the household where one of the confirmed cases worked as a nanny. 2 of the additionally confirmed cases were children who attended a daycare center. Testing* of teachers who worked at and children who attended the daycare center is underway.
* 35 children negative, 9 teachers negative, 4 testing underway (1 teacher, 2 guardians, 1 child)
- Related to the door-to-door sales group in Gwangju City, 5 additional cases were confirmed. The new cases are related to the Ilgok Central Church (1), badminton club (2) and T WORLD (phone store) (2). In total, 140* cases have been confirmed.

Category	Index case confirmed	Number of related confirmed cases
Gwangneuksa Temple	27 June	14
Geumyang Building (officetel)	27 June	26
Tourist group	30 June	5
Gwangju Love Church	30 June	17
CCC Agape Silver Center	30 June	7
Hanwul Nursing Home	1 July	11
Gwangju Ilgok Central Church	2 July	21 (+1)
SM Sauna	1 July	7
T WORLD (mobile phone store)	4 July	6 (+2)
Gwangju Gosi Hagwon	8 July	16
Happy View Hospital	30 June	1
Badminton club	1 July	9 (+2)
Total		140

* Subject to change based on findings from epidemiological investigation

- As of 0:00, 13 July, there were 43 imported cases, of which, 18 were confirmed at the point of entry, and 25 were confirmed in the community while in mandatory self-quarantine after arrival.
- The (presumed) location of infection acquisition of the 43 new imported cases are: America (7) (US 4, Mexico 3), Europe (4) (UK 2, Turkey 2), Africa (1), and Asia excluding China (31) (Philippines 16; Uzbekistan 9; Kazakhstan 3; Bangladesh 1; India 1; Japan 1).

[Imported cases in Korea (as of 0:00, 13 July 2020)]

	Total	Region/Country						Where confirmed		Nationality	
		China	Asia ex-China	Europe	Americas	Africa	Australia	Point of Entry	Community	Korean	Other
New	43	0	31	4	7	1	0	18	25	14	29
Total	1,872	19 (1.0%)	660 (35.3%)	508 (27.1%)	662 (35.4%)	22 (1.2%)	1 (0.1%)	851 (45.5%)	1021 (54.5%)	1,325 (70.8%)	547 (29.2%)

* Figures may change based on findings from ongoing local epidemiological investigation efforts

□ The KCDC analyzed last two weeks' COVID-19 control situation along with risk factors.

<Comparison of major statistics, recent 2 weeks>

	14 June ~ 27 June	28 June ~ 11 July
Average daily new local (domestic) confirmed cases	28.8	31.7
Seoul metropolitan area	22.1	15.0
Average daily new imported confirmed cases (average)	14.3	19.7
Clusters (new)	19	7
Percentage of cases with uncertain route of transmission (under investigation)	9.5% (57/603)	9.4% (68/720)
Percentage of cases managed under infectious disease prevention and control system¹⁾	less than 80%	less than 80%
Percentage of confirmed cases, aged 20-39	34.5%	36%
Percentage of confirmed cases, aged 50 or higher	46.7%	40.8%

1) **Percentage of cases managed under infectious disease prevention and control system** : percentage of new cases that tested positive while under home quarantine

* *Figures may change based on findings from ongoing local epidemiological investigation efforts*

○ The routes of transmission of the last two weeks indicate imported cases (42.7%) and local clusters (35.5%) account for a high proportion of new cases. The percentage of cases with uncertain routes of transmission (under investigation) was 9.4%, slightly smaller compared to 14 June ~ 27 June.

* *New confirmed cases in the last 2 weeks, categorized by route of transmission (722 reported cases between 30 June 0:00 ~ 13 July 0:00) : imported cases 308 (42.7%), local clusters 256 (35.5%), under investigation 68 (9.4%), etc.*

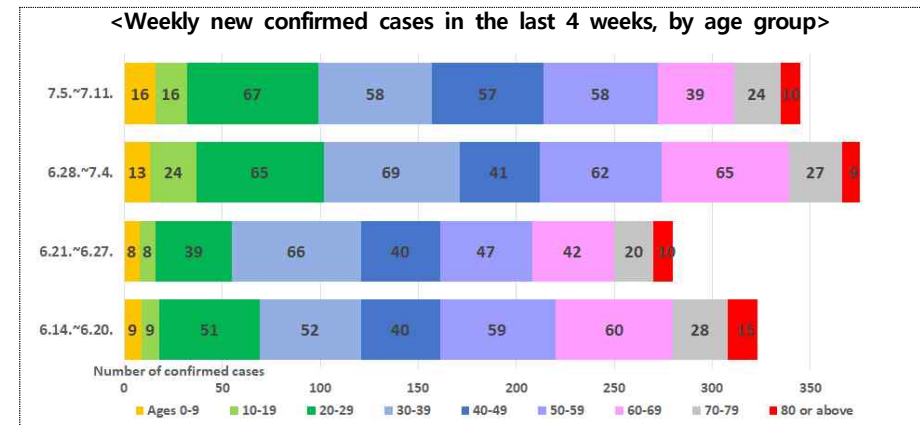
- In the case of local clusters: local clusters in the Seoul metropolitan area are decreasing, but local clusters continue to arise in the Honam and Chungcheong regions, centered around door-to-door sales, religious facilities, social gatherings, publicly used facilities, long-term care facilities, and educational facilities.

<Major Clusters as of 18:00, 12 July>

	Recent clusters, number of confirmed cases
Door-to-door sales	Seoul metropolitan area door-to-door sales (40), Gwangju door-to-door sales (Geumyang building, 26), Daejeon door-to-door sales (87), Gangnam office (water heating pad related business) (12)
Publicly used facilities, social gatherings	Uijeongbu cluster/fitness facilities (31), Gwangju badminton club (8), SM Sauna (7)
Nursing homes, hospitals/clinics	Gwangmyeong Soo Clinic Center (5), Daejeon The Joeun Clinic (18), (Gwangju) CCC Agape Silver Center (7), Hanwul Nursing Home (11)
Religious facilities	Seoul Wangsung Church (39), Anyang Lord Glory Church (26), (Gwangju) Gwangneuksa Temple (14), Ilgok Central Church (21), Love Church (17)
Educational facilities	Daegu Acting Academy (10), Gwangju Gosi Hagwon (16)

○ Analyzing the age of confirmed cases for the last 2 weeks, the percentage of confirmed individuals in their 20s and 30s increased to 36%, while the percentage of confirmed individuals who were in their 50s or above was shown to be 40.8%.

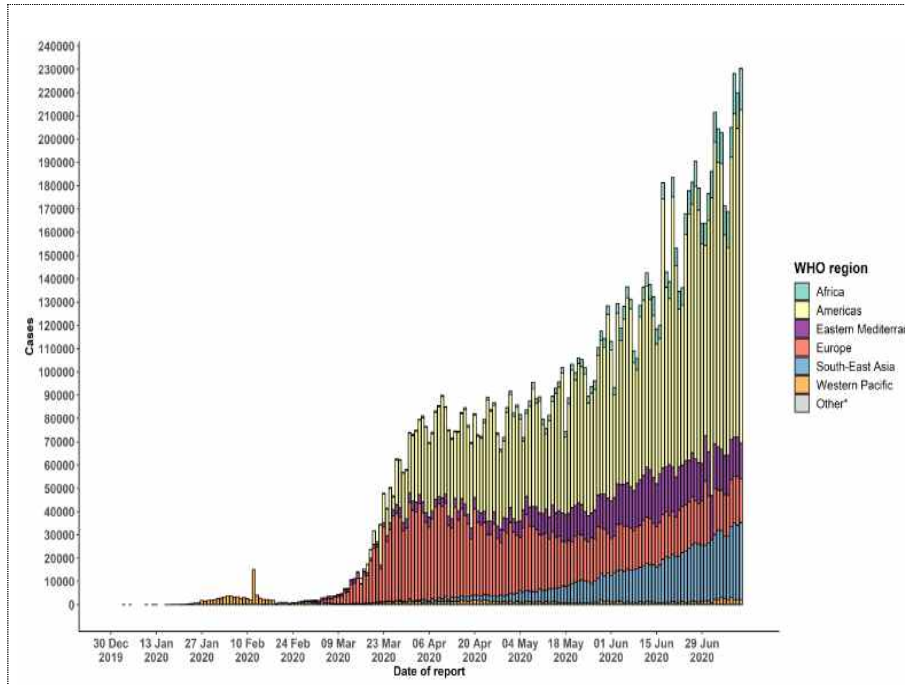
<Weekly new confirmed cases in the last 4 weeks, by age group>



□ In response to the recent imported cases, the Central Disease Control Headquarters will continue to analyze the COVID-19 situation in other countries and formulate practical response plans to prevent importation of cases from abroad.

<Daily new confirmed cases in the world (as of 12 July, WHO)>

(Unit: number of cases)



- Daily new confirmed cases in the world (as of 12 July, WHO) is at 201,009* cases and is consistently increasing.

* (Daily new confirmed cases) 2,125 (1 February) → 1,232 (1 March) → 72,045 (1 April) → 83,271 (1 May) → 104,195 (1 June) → 169,401 (1 July)

- Daily new confirmed cases in the world by continent (as of 12 July, WHO) indicates Americas (114,902 cases (57.2%)) and Asia (40,781 cases (20.3%)) in the two highest case-count continents.

<COVID-19 in Major Countries>

	Country	Total cases/patients (cumulative)	Confirmed cases per 100,000*	Deaths (cumulative)	Fatality rate (%)	Deaths per 100,000*
Americas	United States	3,301,820	1003.3	135,171	4.1	41.1
	Brazil	1,864,681	877.9	72,100	3.9	33.9
Europe	Germany	199,919	242.6	9,071	4.5	11.0
	Italy	243,061	410.6	34,954	14.4	59.0
	Sweden**	74,898	741.6	5,526	7.4	54.7
Africa	Republic of South Africa	264,184	454.7	3,971	1.5	6.8
Asia	Kazakhstan	58,253	313.2	352	0.6	1.9
	Philippines	54,222	50.2	1,372	2.5	1.3
	Uzbekistan	12,706	38.7	58	0.5	0.2
	Japan	21,868	17.2	982	4.5	0.8
	India	849,553	62.1	22,674	2.7	1.7
	Republic of Korea	13,479	26.0	289	2.1	0.6

* Based on total population by country (as of 2019): United Nations Population Fund (UNFPA), Republic of Korea January 2020 Ministry of Interior and Safety's Resident Registration and Population Status

- Analyzing confirmed cases and deaths in other countries,

- The 5 countries with the highest confirmed cases per 100,000 people were **Qatar** (3,837), **Bahrain** (2,029), **Chile** (1,721.5), **Kuwait** (1,307), and **Oman** (1,120.3). The situation in these countries are as follows:

<Unit: number of cases, %>

Country	Total patients (cumulative)	Deaths (cumulative)	Fatality rate (%)	Confirmed cases per 100,000 citizens
Qatar	103,598	147	0.1	3,837
Bahrain	32,470	107	0.3	2,029
Chile	315,041	6,979	2.2	1,721.5
Kuwait	54,894	390	0.7	1,307
Oman	56,015	257	0.5	1,120.3

- The 5 countries with the highest case fatality rate were **Yemen** (26.3%), **France** (17.6%), **Belgium** (15.6%), **UK** (15.5%), and **Italy** (14.4%). The situation in these countries are as follows:

<Unit: number of cases, %>

Country	Total patients (cumulative)	Deaths (cumulative)	Fatality rate (%)
Yemen	1,389	365	26.3
France	170,752	30,004	17.6
Belgium	62,606	9,782	15.6
UK	289,603	44,819	15.5
Italy	243,061	34,954	14.4

- Along with the increase in confirmed cases all over the world, the number of imported cases is also increasing.
 - Last week, the number of imported confirmed cases was 158, of which 42 were Korean citizens and 116 were foreign nationals.
- All incoming travelers from abroad are subject to a mandatory 2 week quarantine and testing process. Imported cases are being found during the screening or quarantine process.
- In order to stop the importation of COVID-19 cases and to prevent local community transmission,
 - Starting 23 June, limitation on visa issuance and flight is being placed on countries that have been designated as high risk countries that require strengthened infectious disease prevention and control. The designation is based on the COVID-19 infection risk assessment.
 - In addition, foreign workers in possession of an **E-9** visa (non-professional employment) must **obtain a self-quarantine confirmation document before entering Korea**. The location of self-quarantine will be strictly verified. If the worker does not possess this document, he/she will be barred from entry.
 - Starting 9 July, routine flights arriving from designated high risk countries that require strengthened infectious disease prevention and control have been flying under 60% seat capacity. When departing for these countries, permission to re-enter Korea may be limited under current policies.
 - Starting 13 July, all foreigners arriving from designated high risk countries that require strengthened infectious disease prevention and control must be in possession of a negative PCR test* that was issued within 48 hours prior to the time of departure. These test results will be submitted upon entry into Korea.

* Issued from testing/medical facilities designated by Republic of Korea's overseas embassies or consulates

- In addition, infectious disease prevention and control has been strengthened in harbors. Starting 13 July, it is planned to mandate foreign sailors arriving through harbors to quarantine in designated temporary residential facilities for 14 days.

* 2 regions have designated temporary residential facilities (Busan, Yeosu); starting 13 July, they will be open. More facilities will be open as they are designated by authorities.

- The Central Disease Control Headquarters stressed that COVID-19 infection can occur in facilities that are closed, crowded, and are close-contact settings. Thereby, people should postpone social gatherings and meetings, while refraining from going to publicly used facilities, such as nightlife entertainment facilities, pubs, karaokes, and PC cafes.
 - Hand washing, mask wearing, and social distancing (2m recommended) should be kept in everyday life.
- Senior citizens over 65 years of age should refrain from going to social gatherings or meetings in places that lack ventilation and are crowded.
 - If going to such a meeting, refrain from sharing a meal and singing. Wear a mask and periodically use hand sanitizer.
 - For your health, it is important to manage and seek treatment for chronic medical conditions and regularly exercise.

[Regional distribution and epidemiological links of the confirmed cases]

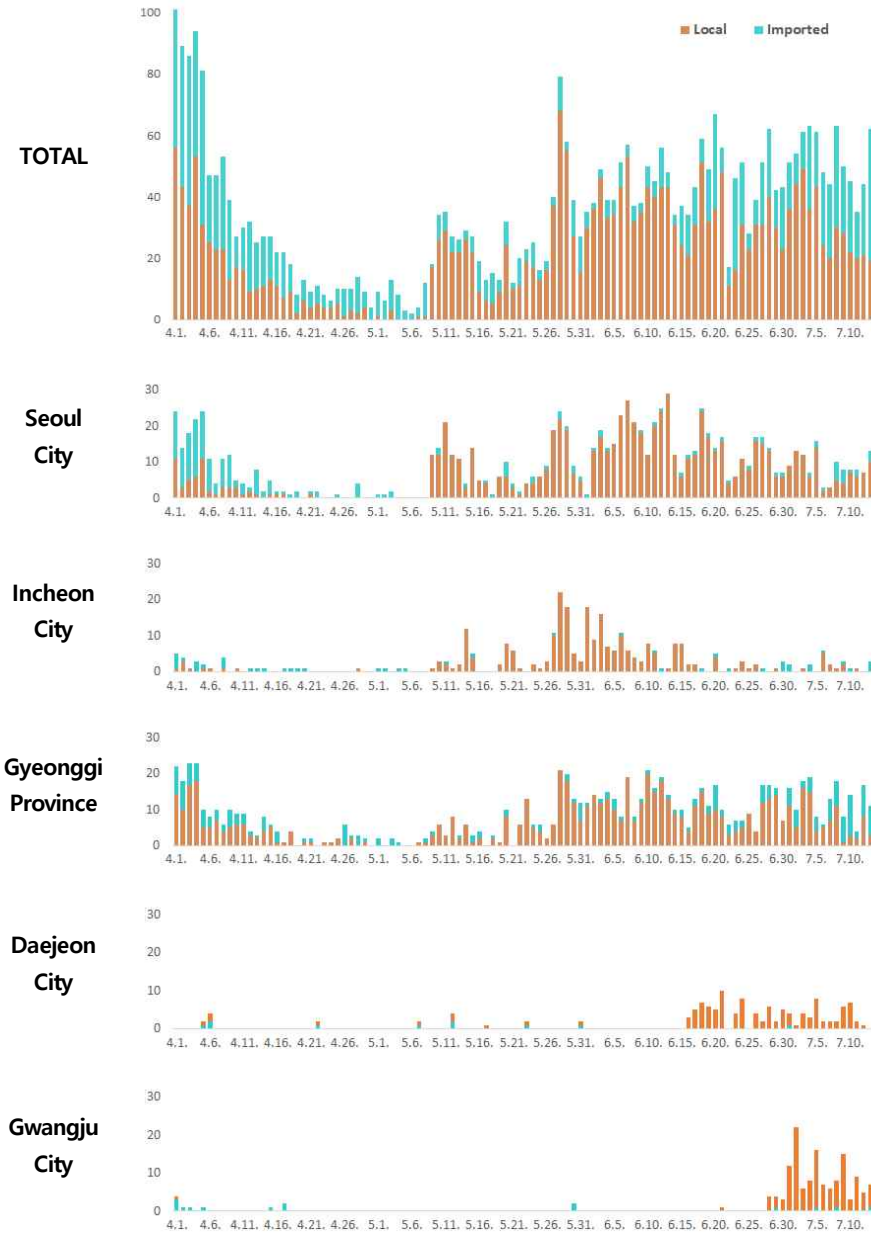
Region	Confirmed cases									Other major clusters
	Total	Imported cases	Clusters					Other*	New cases	
			Sub-total	Shin-cheonji	Other local clusters	Contacts of confirmed cases	Linked to imported cases			
Seoul	1,429	320	976	8	841	58	69	133	13	Nightclubs (139), Richway (121), Guro-gu call center (99), Yangcheon-gu sport facility (44), Seongsim Day Care Center (43), Manmin Central Church (41), SMR newly planted churches group (37), Dong-an Church-PC Cafe (28), Coupang (24), Wangsung Church (30), Gangnam Yeoksam-dong gathering (13) , Daejeon door-to-door sales (8), Uijeongbu Apartment (8), Gangnam-gu financial institution (8), Lotte Midopa Gwanghwamun Building (3) etc.
Busan	156	37	89	12	58	18	1	30	0	Onchun Church (39), Suyeong-gu Kindergarten (5), Nightclubs (4), etc.
Daegu	6,927	47	6,131	4,511	699	917	4	749	1	Second Mi-Ju Hospital (196), Hansarang Convalescent Hospital (124), Daesil Convalescent Hospital (101), Fatima Hospital (39), Daegu Acting Academy (11), Nightclubs (2), etc.
Incheon	363	70	282	2	262	10	8	11	3	Coupang (61), SMR newly planted churches group (57), Nightclubs (54), Richway (24), Guro-gu call center (19), Gyeong-gu real estate agency family (12), SMR door-to-door sales gathering (6), Car enthusiast group (4) etc.
Gwangju	168	20	142	9	120	7	6	6	7	Gwangju door-to-door sales (119)
Daejeon	159	16	122	2	99	21	0	21	0	Door-to-door sales in Daejeon (56), The Joeun Clinic (16), etc.
Ulsan	55	22	26	16	4	3	3	7	0	
Sejong	50	5	44	1	40	3	0	1	0	Ministry of Oceans and Fisheries (31), gym facilities (8)

Gyeonggi	1,369	313	958	29	788	77	64	98	11	Grace River Church (67), Coupang (67), Nightclubs (59), Richway (58), Uijeongbu St. Mary's Hospital (50), Guro-gu call center-Bucheon SaengMyeongSu Church (50), Yangcheon-gu sport facility (28), SMR Newly planted churches group (25), Lord Glory Church (25), Anyang-Gunpo pastors group (22), Uijeongbu Apartment (21), SMR door-to-door sales (19), Lotte Confectionery logistics center (15), Wangsung Church (9), Seongnam neighbors gathering (7), Gwangmyeong Soo Clinic Center (3) , etc.
Gangwon	69	19	43	17	26	0	0	7	2	Uijeongbu St. Mary's Hospital (10), Apartments in Wonju (4), Richway (4), Geumcheon-gu rice milling machine manufacturer (4), etc.
Chungbuk	69	14	45	6	29	8	2	10	1	Goesan-gun Jangyeon-myeon (11), Nightclubs (9), Guro-gu call center (2), etc.
Chungnam	185	26	147	0	142	4	1	12	4	Gym facilities in Cheonan (103), Daejeon door-to-door sales (15), Richway (3), etc.
Jeonbuk	36	20	11	1	10	0	0	5	0	Daejeon door-to-door sales (3), Nightclubs (2)
Jeonnam	32	16	11	1	7	2	1	5	0	Gwangju door-to-door sales (4), Gwangju Gosi Hagwon (2), etc.
Gyeongbuk	1,393	24	1,236	566	478	192	0	133	0	Cheongdo Daenam Hospital (119), Bonghwa Pureun Nursing Home (68), Gyeongsan Seo Convalescent Hospital (66), pilgrimage to Israel (41), Yecheon-gun (40), Gumi Elim Church (10), etc.
Gyeongnam	148	38	90	32	50	6	2	20	2	Geochang Church (10), Wings Tower (9), Geochang Woongyang-myeon (8), Nightclubs (2), etc.
Jeju	20	14	2	0	1	0	1	4	0	
Ports of Entry	851	851	0	0	0	0	0	0	18	
Total	13,479 (%)	1,872 (13.9)	10,355 (76.8)	5,213 (38.7)	3,654 (27.1)	1,326 (9.8)	162 (1.2)	1,252 (9.3)	62	

* Not classified into a cluster or under investigation

※ The interim classification is based on the reporting location, which may change depending on further epidemiological investigation.

[Daily new confirmed cases by chain of transmission]



[Age distribution of severe cases]

	6.30	7.1	7.2	7.3	7.4	7.5	7.6	7.7	7.8	7.9	7.10	7.11	7.12	7.13
Total	32	33	34	34	30	32	32	36	31	26	22	20	19	20
Severe	11	13	16	13	11	11	11	12	9	7	8	7	8	8
Very severe	21	20	18	21	19	21	21	24	22	19	14	13	11	12

	Total	Severe (%)	Very severe (%)
Total	20	8 (100.0)	12 (100.0)
80 and above	3	1 (12.5)	2 (16.7)
70-79	8	2 (25.0)	6 (50.0)
60-69	4	3 (37.5)	1 (8.3)
50-59	5	2 (25.0)	3 (25.0)
40-49	0	0 (0.0)	0 (0.0)
30-39	0	0 (0.0)	0 (0.0)
20-29	0	0 (0.0)	0 (0.0)
10-19	0	0 (0.0)	0 (0.0)
0-9	0	0 (0.0)	0 (0.0)

[New cases (for last 2 weeks) by chain of transmission]

