



KCDC

Korea Centers for Disease Control & Prevention

Updates on COVID-19 in Republic of Korea

10 June 2020

- As of 0:00, 10 June 2020, the total number of confirmed cases is 11,902 (including 1,307 imported cases), of which 10,611 cases have been discharged from isolation. Newly confirmed cases are 50 in total.

[Table 1. Total reported/tested cases]

Period (since 3 Jan)	Total	Tested positive (PCR)				Testing in progress	Tested negative (PCR)
		Confirmed	Discharged from isolation	Under isolation	Deceased		
As of 0:00 9 June (Tues)	1,035,997	11,852	10,589	989	274	27,459	996,686
As of 0:00 10 June (Wed)	1,051,972	11,902	10,611	1,015	276	26,223	1,013,847
Difference	(+)15,975	(+)50	(+)22	(+)26	(+)2	(-)1,236	(+)17,161

[Table 2. Imported cases in Korea (as of 0:00, 10 June 2020)]

	Total	Region/Country						Where confirmed		Nationality	
		China	Asia ex-China	Europe	Americas	Africa	Australia	Point of Entry	Community	Korean	Other
New	7	0	5	0	2	0	0	6	1	1	6
Total	1,307	19 (1.5%)	246 (18.8%)	476 (36.4%)	557 (42.6%)	8 (0.6%)	1 (0.1%)	556 (42.5%)	751 (57.5%)	1,133 (86.7%)	174 (13.3%)

* Figures may change based on findings from ongoing local epidemiological investigation efforts.

- Of the 50 new cases, 7 were imported cases and 43 were locally transmitted cases.
 - Of the 7 imported cases, 2 are from America, 3 from Pakistan, 2 from the Philippines.
- Related to the Coupang logistics center cluster in Bucheon-si, Gyeonggi Province, 5 additional cases (contacts) were confirmed while under quarantine. In total, 144* cases have been confirmed.
 - * 83 workers of the logistics center; 61 contacts / Gyeonggi=66, Incheon=55, Seoul=23
- Related to the newly planted churches in the Seoul Metropolitan Region, 4 additional cases were confirmed. In total, 92* cases have been confirmed.
 - *Related to church = 32; Contacts = 60 / Incheon = 47; Seoul = 28; Gyeonggi = 17
- Related to Richway in Gwangak-gu, Seoul, 93* cases have been confirmed in total to date. Epidemiological investigation revealed that a case confirmed on 7 June related to SJ Investment call center had come in contact with a case related to Richway. The 8 cases related to SJ Investment call center have been reclassified and are now included in the Richway cluster.
 - *Visitors = 36; Contacts = 57 / Seoul = 56; Gyeonggi = 24; Incheon = 9; Chungnam = 2; Gangwon = 2
- Related to the sport facility in Yangcheon-gu, Seoul, 3 additional cases were confirmed. In total, 54* cases have been confirmed.
 - *Related to the table tennis facility = 28 Related to Big Tree Church = 26



KCDC

Korea Centers for Disease Control & Prevention

Updates on COVID-19 in Republic of Korea

10 June 2020

- Related to the Incheon Gyeyang-gu family, 1 additional case was confirmed. The new case was under cohort isolation at Juan Happy Town (a nursing home) in Nam-gu, Incheon where a confirmed case related to this cluster had worked. In total, 16* cases have been confirmed.
*Members of the family = 5; Real estate business partners/family = 2; Yeongdengpo-gu Yonsei Naro Academy students = 2; Contacts = 7
- 5 cases have been confirmed at Defense Security Support Command in Gwacheon-si, Gyeonggi Province. Investigation on chains of transmission and testing of contacts are underway.
- Recently, COVID-19 transmissions are occurring through various venues such as religious small group meetings, club meetings, and door-to-door sales group meetings in Seoul Metropolitan Region (Seoul and nearby areas) with high population density and foot traffic. If the transmission continues and occurs at a highly crowded and confined space with a large number of people, a massive outbreak may occur at any time.
- Recently, there has been a sharp increase in the proportion of the elderly confirmed cases. Among recent cases (31 May – 6 June), 26.6% (74 cases) are people aged 65 or older. The elderly (65 or older) cases make up 54.1% (46/85) of Richway cluster and 31.5% (29/92) of the SMR newly planted churches group cluster. (Data as of 0:00 of 10 June)

Date	Ages 18 or below	Ages 19-39	Ages 40-64	Ages 65 or above	TOTAL
5.3~9.	2	39	16	3	60
	(3.3%)	(65.0%)	(26.7%)	(5.0%)	(100.0%)
5.10~16.	27	131	31	8	197
	(13.7%)	(66.5%)	(15.7%)	(4.1%)	(100.0%)
5.17~23.	15	63	43	7	128
	(11.7%)	(49.2%)	(33.6%)	(5.5%)	(100.0%)
5.24~30.	27	110	114	25	276
	(9.8%)	(39.9%)	(41.3%)	(9.1%)	(100.0%)
5.31.~6.6.	15	65	124	74	278
	(5.4%)	(23.4%)	(44.6%)	(26.6%)	(100.0%)

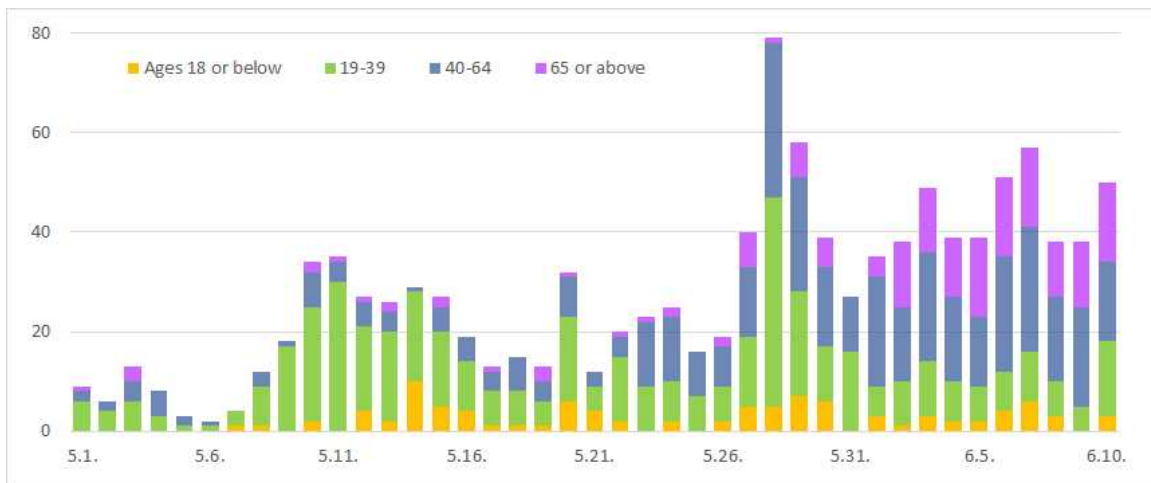


KCDC

Korea Centers for Disease Control & Prevention

Updates on COVID-19 in Republic of Korea

10 June 2020



- With the rise of elderly confirmed cases, the proportion of severe patients among confirmed cases have also increased recently (since May), including 3 deaths.
 - * 3 deaths: 1 related to biblical language study society, 1 related to Coupang logistics center, 1 related to Happy Care Home
 - * 6 very severe (critical) cases: 3 related to SMR newly planted churches group, 1 related to biblical language study society, 1 related to Coupang logistics center, 1 related to Happy Care Home
 - * 9 severe cases: 3 related to Coupang logistics center, 1 related to SMR newly planted churches group, 1 related to Yongin-si brothers, 1 related to Richway, 3 cases with chain of transmission under investigation
- KCDC requests elderly people who are 65 years old or older to avoid any gathering that takes place in a poorly ventilated, enclosed space.
- If such an occasion is unavoidable, sharing meals and singing should be avoided. Masks should be worn and frequent hand washing or sanitizing should be practiced.
- KCDC advises elderly people take good care of any chronic medical conditions they have. They are encouraged to utilize various means of consulting with healthcare professional regularly, including over-the-phone consultations. When visiting a clinic or hospital, a facemask should be worn.
- Regular exercise is also important, including light home exercises and stretching as well as taking a walk regularly in places and times with less foot traffic outside.
- Since COVID-19 outbreak can occur from any venue under crowded, confined, and close-contact environment, residents of the Seoul Metropolitan Region are advised to postpone social plans and gatherings including club meetings and religious gatherings or use non-face-to-face alternatives and avoid using public venues such as restaurants and bars.
- In particular, elderly people who are 65 years old or older are requested to avoid any enclosed space that is poorly ventilated where a large number of people can gather together.
- If such an occasion is unavoidable, sharing meals and singing should be avoided. Masks should be worn and frequent hand washing or sanitizing should be practiced.



KCDC

Korea Centers for Disease Control & Prevention

Updates on COVID-19 in Republic of Korea

10 June 2020

[Table 4: Regional distribution and epidemiological links of the confirmed cases]

Region	Confirmed cases									Other major clusters
	Total	Imported cases	Clusters					Other*	New cases	
			Sub-total	Shin-cheonji	Other clusters	Contacts of confirmed cases	Imported cases			
Seoul	1,027	283	685	8	587	21	69	59	12	Nightclubs (136), Guro-gu call center (99), Richway (49) , Manmin Central Church (41), Yangcheon table tennis club (32) , Dong-an Church-PC Cafe (28), SMR newly planted churches group (28), KB Life Insurance PM Service Agency (12), Coupang (21), biblical language study meeting (6), KCCC (5), etc.
Busan	147	29	88	12	57	18	1	30	0	Onchun Church (39), Suyeong-gu Kindergarten (5), Itaewon clubs (4), etc.
Daegu	6,888	29	6,118	4,511	686	917	4	741	0	Second Mi-Ju Hospital (196), Hansarang Convalescent Hospital (124), Daesil Convalescent Hospital (101), Fatima Hospital (39), Nightclubs (2), etc.
Incheon	294	49	237	2	222	6	7	8	8	Nightclubs (54), Coupang (54), SMR newly planted churches group (47) , Guro-gu call center (19), Richway (10) , Gyeyang-gu real estate agency family (10) , Jesus Malsseum Silcheon Church (5), Brothers in Yongin/Goyang (2), etc.
Gwangju	32	16	16	9	0	1	6	0	0	
Daejeon	46	15	22	2	12	8	0	9	0	Korea Forest Engineer Institute (3), etc.
Ulsan	53	22	24	16	2	3	3	7	0	
Sejong	47	4	42	1	38	3	0	1	0	Ministry of Oceans and Fisheries (31), gym facilities (8)
Gyeonggi	976	200	718	29	573	53	63	58	21	Grace River Church in Seongnam (67), Coupang (64), Nightclubs (59), Uijeongbu St. Mary's Hospital (50), Guro-gu call center-Bucheon SaengMyeongSu Church (50), Richway (24) , Anyang-Gunpo pastors group (21) , Yangcheon table tennis club (20) , SMR newly planted churches group (17) , biblical language study meeting (9), Happy Care Home (9), KCCC (6), etc.
Gangwon	59	16	36	17	19	0	0	7	1	Uijeongbu St. Mary's Hospital (10), Apartments in Wonju (4), Nightclubs (2), etc.
Chungbuk	61	9	42	6	27	7	2	10	0	Goesan-gun Jangyeon-myeon (11), Itaewon clubs (9), Guro-gu call center (2), Richway (2) , etc.
Chungnam	150	14	125	0	123	1	1	11	0	Gym facilities in Cheonan (103), research center in Seosan (8), Richway (2), etc.
Jeonbuk	21	10	6	1	5	0	0	5	0	Nightclubs (2)
Jeonnam	20	12	5	1	1	2	1	3	0	
Gyeongbuk	1,383	16	1,234	566	478	190	0	133	0	Cheongdo Daenam Hospital (119), Bonghwa Pureun Nursing Home (68), Gyeongsan Seo Convalescent Hospital (66), pilgrimage to Israel (41), Yecheon-gun (40), Gumi Elim Church (10), etc.
Gyeongnam	127	18	89	32	50	6	1	20	2	Geochang Church (10), Wings Tower (9), Geochang Woongyang-myeon (8), Nightclubs (2), etc.
Jeju	15	9	2	0	1	0	1	4	0	
Airport	556	556	0	0	0	0	0	0	6	
Total	11,902 (%)	1,307 (60.0)	9,489 (13.3)	5,213 (0.0)	2,881 (6.7)	1,236 (0.0)	159 (6.7)	1,106 (26.7)	50	

* Not classified into a cluster or under investigation

※ The interim classification is based on the reporting location, which may change depending on further epidemiological investigation.



KCDC

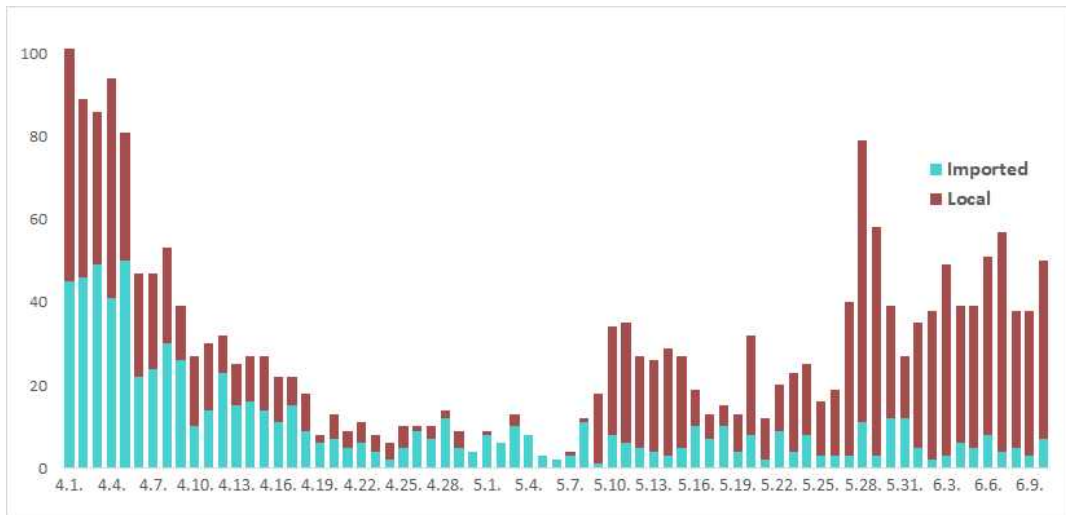
Korea Centers for Disease Control & Prevention

Updates on COVID-19 in Republic of Korea

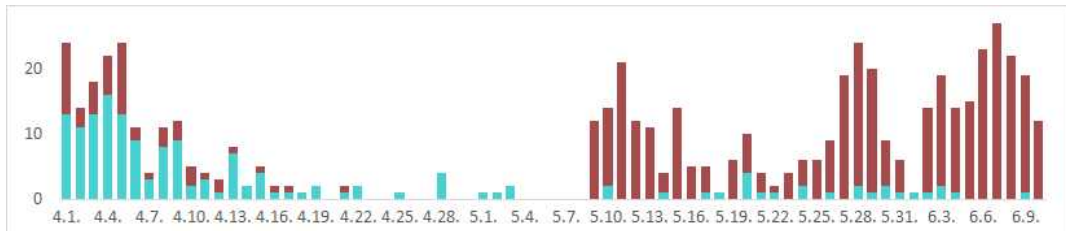
10 June 2020

[Figure 3: Daily new confirmed cases by chain of transmission]

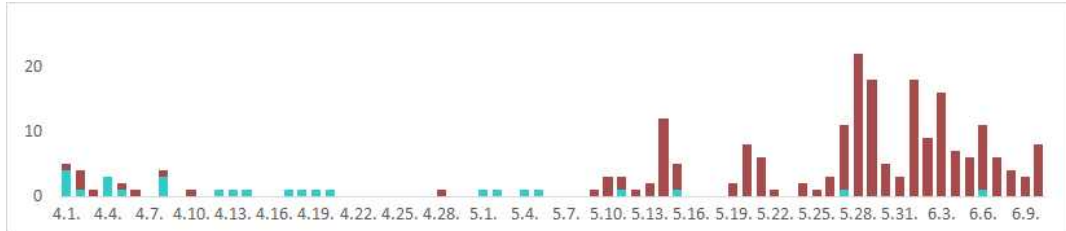
TOTAL



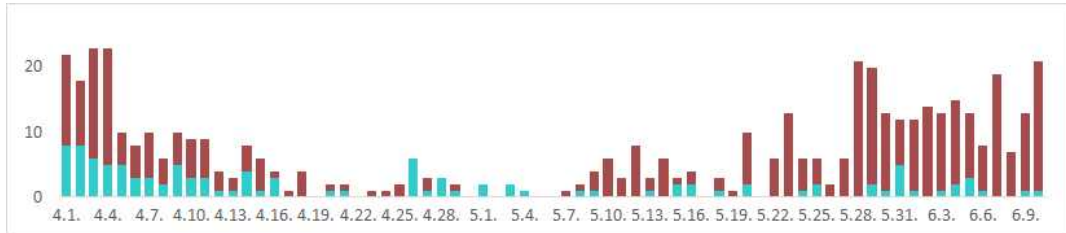
Seoul City



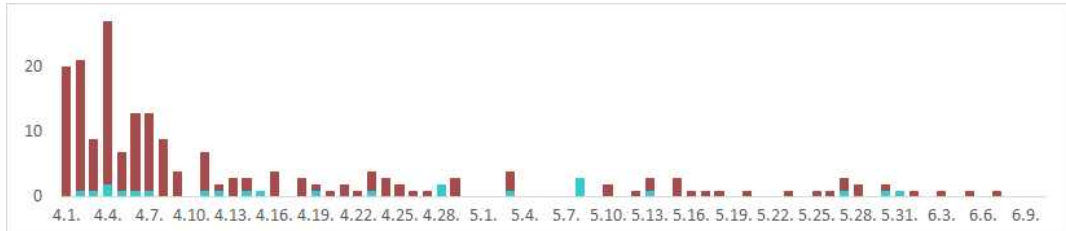
Incheon City



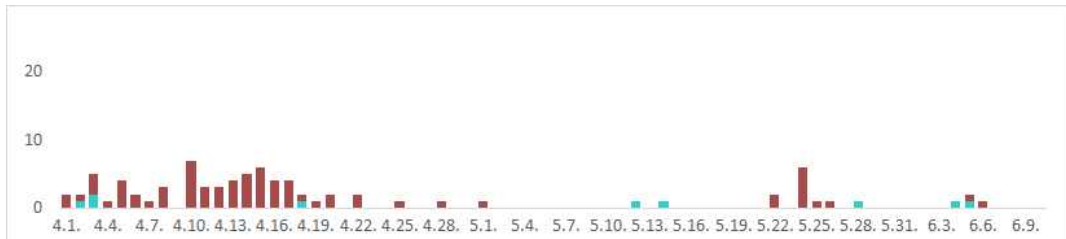
Gyeonggi Province



Daegu City



Gyeongbuk Province





KCDC

Korea Centers for Disease Control & Prevention

Updates on COVID-19 in Republic of Korea

10 June 2020

[Table 5: Age distribution of severe cases]

	5.28	5.29	5.30	5.31	6.1	6.2	6.3	6.4	6.5	6.6	6.7	6.8	6.9	6.10
Total	11	10	10	11	12	11	8	9	11	14	14	14	18	20
Severe	4	3	4	3	3	2	1	2	4	7	6	6	11	11
Very severe	7	7	6	8	9	9	7	7	7	7	8	8	7	9

Age group	Total	Severe (%)	Very severe (%)
Total	20	11 (100.0)	9 (100.0)
80 and above	5	1 (9.1)	4 (44.4)
70-79	5	4 (36.4)	1 (11.1)
60-69	3	2 (18.2)	1 (11.1)
50-59	6	4 (36.4)	2 (22.2)
40-49	1	0 (0.0)	1 (11.1)
30-39	0	0 (0.0)	0 (0.0)
20-29	0	0 (0.0)	0 (0.0)
10-19	0	0 (0.0)	0 (0.0)
0-9	0	0 (0.0)	0 (0.0)

[Figure 4: New cases (for last 2 weeks) by chain of transmission]

