



KCDC

Korea Centers for Disease Control & Prevention

Updates on COVID-19 in Republic of Korea

12 June 2020

- As of 0:00, 12 June 2020, the total number of confirmed cases is 12,003 (including 1,325 imported cases), of which 10,669 cases have been discharged from isolation. Newly confirmed cases are 56 in total.

[Table 1. Total reported/tested cases]

Period (since 3 Jan)	Total	Tested positive (PCR)				Testing in progress	Tested negative (PCR)
		Confirmed	Discharged from isolation	Under isolation	Deceased		
As of 0:00 11 June (Thurs)	1,066,888	11,947	10,654	1,017	276	25,494	1,029,447
As of 0:00 12 June (Fri)	1,081,487	12,003	10,669	1,057	277	24,244	1,045,240
Difference	(+)14,599	(+)56	(+)15	(+)40	(+)1	(-)1,250	(+)15,793

[Table 2. Imported cases in Korea (as of 0:00, 12 June 2020)]

	Total	Region/Country						Where confirmed		Nationality	
		China	Asia ex-China	Europe	Americas	Africa	Australia	Point of Entry	Community	Korean	Other
New	13	0	11	0	2	0	0	10	3	3	10
Total	1,325	19 (1.4%)	260 (19.6%)	476 (35.9%)	561 (42.3%)	8 (0.6%)	1 (0.1%)	568 (42.9%)	757 (57.1%)	1,138 (85.9%)	187 (14.1%)

* Figures may change based on findings from ongoing local epidemiological investigation efforts.

- Of the 56 new cases, 13 were imported cases and 43 were locally transmitted cases.
 - Of the 13 imported cases, 2 are from America, 5 from Pakistan, 3 from the Philippines, 1 from Indonesia, 1 from Kazakhstan, 1 from Kuwait.
- Related to the Coupang logistics center cluster in Bucheon-si, Gyeonggi Province, 1 additional case was confirmed. The new case was under self-quarantine. In total, 147* cases have been confirmed.
 - * 83 workers of the logistics center; 64 contacts / Gyeonggi=67, Incheon=56, Seoul=24
- Related to the newly planted churches in the Seoul Metropolitan Region, 1 additional case was confirmed. In total, 95* cases have been confirmed.
 - *Related to church = 34; Contacts = 61 / Incheon = 49; Seoul = 27; Gyeonggi = 19
- Related to Richway in Gwangak-gu, Seoul, 23 additional cases were confirmed. In total, 139* cases have been confirmed. Transmission is continuing and causing cluster outbreaks. Elderly cases (aged 65 or older) account for 44.6% (62/139) of this cluster.
 - *Visitors = 40; Contacts = 99 / Seoul = 78; Gyeonggi = 39; Incheon = 18; Chungnam = 2; Gangwon = 2



KCDC

Korea Centers for Disease Control & Prevention

Updates on COVID-19 in Republic of Korea

12 June 2020

Richway-related onward transmissions

Category	Location	Number of confirmed cases
Chinese Migrants Church Shelter	Seoul Guro-gu	8
Myeongseong Housing	Seoul Gangnam-gu	20
Principle School of English	Seoul Gangnam-gu	7
SJ Investment call center	Seoul Gangseo-gu	10
Jesus Vision Church	Seoul Geumcheon-gu	8
NBS Partners	Gyeonggi Seongnam-si	11
Church of God	Gyeonggi Seongnam-si	4
Jesus Malsseum Silcheon Church	Incheon Namdong-gu	9
Family, work, etc.		22
Total		99

Richway-related cases by age group

	Ages 18 or below	Ages 19-39	Ages 40-64	Ages 65 or above	Total
n	3	15	59	62	139
%	2.2	10.8	42.4	44.6	100

- Related to the sport facility in Yangcheon-gu, Seoul, 1 additional case was confirmed. The new case was under self-quarantine. In total, 61* cases have been confirmed.

*Related to the table tennis facility = 34; Related to Big Tree Church = 27

- Related to KB Life Insurance TM Agency, 1 additional case was confirmed from testing before release from self-quarantine. In total, 14 cases have been confirmed.

- Related to Happy Care Home in Gwangju-si, Gyeonggi Province, 1 additional case was confirmed. The new case was a care worker and was confirmed from testing before release from quarantine. In total, 10* cases have been confirmed.

*Care workers = 3; Residents = 6; Social worker = 1

- 1 case was confirmed on 11 June from Seongsim Day Care Center in Dobong-gu, Seoul City. On 12 June, 2 workers and 11 users were additionally confirmed. In total, 14* cases have been confirmed. Testing is underway for 88 people including contacts related to the care center. Other than additional 13 confirmed cases, 46 people have tested negative. Testing is in progress for the rest.

*User = 12; Staff = 2

- 4 cases were confirmed from Nanum Domiciliary Care Center in Dongan-gu, Anyang-si, Gyeonggi Province. Exposures have been placed in self-quarantine. Investigation on chains of transmission is underway.



KCDC

Korea Centers for Disease
Control & Prevention

Updates on COVID-19 in Republic of Korea

12 June 2020

- 1 case was confirmed from a middle school in Buk-gu, Daegu City. Investigation on the source of infection and screening testing for contacts is underway.
- Despite the stronger measures in place until 14 June, chains of infection continue to spread in the Seoul Metropolitan Region.
 - In light of the current situation, Korea's central and local governments have decided to extend the current measure (including gathering ban on high-risk facilities, suspension of operation of public facilities, etc.) until the situation in the Seoul Metropolitan Region improves.
 - The goal will be to stabilize the situation to a risk level prior to the Social Distancing campaign, including daily new case count below 10.
 - Measures such as gathering ban on after-school private academies, PC cafes, and high-risk facilities, suspension of operation of public facilities, limiting non-essential public events, and stronger infection prevention management will continue to be enforced.
 - Relevant ministries and municipalities together will strengthen enforcement of the rules in such facilities. One strike out policy will be applied to any significant violation.
- With continued COVID-19 cluster transmissions occurring rapidly in the Seoul Metropolitan Region, KCDC urged people to take extra precautions during the weekend.
 - Recent major clusters have occurred in underground areas or other poorly ventilated enclosed spaces where respiratory droplet producing activities such as singing, eating, or sporting activities took place. Preventive measures like mask wearing and hand hygiene was not followed well.
 - Religious facilities are advised to cancel or postpone small group meetings that involve conversations, singing, or eating together, or switch them to non-face-to-face methods.
 - If on-site worship service is held, such facilities need to reduce the number of participants to ensure that participants keep proper distance from each other, check participants for fever and other symptoms, ensure hand washing and mask wearing, and make sure not to provide meals or engage in activities that release respiratory droplets in the air (such as singing, chanting, and shouting).
- With the rise in the number of elderly cases, the number of patients with severe symptoms is also increasing. The elderly need to take particular precautions.
 - People who are 65 years old or older are advised not to visit enclosed spaces without windows or that are poorly ventilated.



KCDC

Korea Centers for Disease
Control & Prevention

Updates on COVID-19 in Republic of Korea

12 June 2020

- If such an occasion is unavoidable, activities such as eating and singing should be refrained. Masks should be worn and frequent hand washing or sanitizing should be practiced.

- KCDC advises elderly people to take good care of any chronic medical conditions they have. They are encouraged to utilize various means of consulting with healthcare professional regularly, including over-the-phone consultations. When visiting a clinic or hospital, a facemask should be worn.

- Regular exercise is also important, including light home exercises and stretching as well as taking a walk regularly in places and times with less foot traffic outside.

- As for high-risk community facilities such as convalescent hospitals, psychiatric hospitals, and long-term care facilities, if a resident or a worker shows any suspected symptoms such as respiratory symptoms or fever, the resident or worker should be tested immediately.
 - As a measure to prevent infections spreading to such facilities, 50% of the cost of testing for new inpatients or residents or care facilities is covered by the National Health Insurance. Active testing is encouraged for such facilities/people.

 - People who work at such facilities should not go to work if they have COVID-19 suspected symptoms, avoid public venues such as nightclubs, bars, singing rooms, and PC cafes, and refrain from attending social gatherings such as club meetings and religious small group gatherings.

- Since COVID-19 outbreak can occur from any venue under crowded, confined, and close-contact environment, everyone is advised to avoid club meetings, religious small group meetings, and other gatherings taking place in poorly ventilated enclosed areas and to practice hand washing, mask wearing, and physical distancing (2 meters) in daily life.



KCDC

Korea Centers for Disease Control & Prevention

Updates on COVID-19 in Republic of Korea

12 June 2020

[Table 4: Regional distribution and epidemiological links of the confirmed cases]

Region	Confirmed cases									Other major clusters
	Total	Imported cases	Clusters					Other*	New cases	
			Sub-total	Shin-cheonji	Other clusters	Contacts of confirmed cases	Imported cases			
Seoul	1,073	285	723	8	624	22	69	65	25	Nightclubs (139), Guro-gu call center (99), Richway (78) , Manmin Central Church (41), Yangcheon table tennis club (35) , SMR newly planted churches group (29), Dong-an Church-PC Cafe (28), Coupang (24) , KB Life Insurance PM Service Agency (13) , biblical language study meeting (6), KCCC (5), etc.
Busan	147	29	88	12	57	18	1	30	0	Onchun Church (39), Suyeong-gu Kindergarten (5), Itaewon clubs (4), etc.
Daegu	6,889	29	6,118	4,511	686	917	4	742	1	Second Mi-Ju Hospital (196), Hansarang Convalescent Hospital (124), Daesil Convalescent Hospital (101), Fatima Hospital (39), Nightclubs (2), etc.
Incheon	301	51	242	2	227	6	7	8	1	Coupang (56), Nightclubs (54), SMR newly planted churches group (48), Guro-gu call center (19), Richway (18), Gyeong-gu real estate agency family (10), Jesus Malsseum Silcheon Church (5), Brothers in Yongin/Goyang (2), etc.
Gwangju	32	16	16	9	0	1	6	0	0	
Daejeon	46	15	22	2	12	8	0	9	0	Korea Forest Engineer Institute (3), etc.
Ulsan	53	22	24	16	2	3	3	7	0	
Sejong	47	4	42	1	38	3	0	1	0	Ministry of Oceans and Fisheries (31), gym facilities (8)
Gyeonggi	1,011	202	747	29	601	54	63	62	19	Grace River Church in Seongnam (67), Coupang (66), Nightclubs (59), Uijeongbu St. Mary's Hospital (50), Guro-gu call center-Bucheon SaengMyeongSu Church (50), Richway (39) , Yangcheon table tennis club (24) , Anyang-Gunpo pastors group (21), SMR newly planted churches group (18), Happy Care Home (10) , biblical language study meeting (9), Defense Security Support Command (6), KCCC (6), etc.
Gangwon	59	16	36	17	19	0	0	7	0	Uijeongbu St. Mary's Hospital (10), Apartments in Wonju (4), Nightclubs (2), Richway (2), etc.
Chungbuk	61	9	42	6	27	7	2	10	0	Goesan-gun Jangyeon-myeon (11), Itaewon clubs (9), Guro-gu call center (2), etc.
Chungnam	150	14	125	0	123	1	1	11	0	Gym facilities in Cheonan (103), research center in Seosan (8), Richway (2), etc.
Jeonbuk	21	10	6	1	5	0	0	5	0	Nightclubs (2)
Jeonnam	20	12	5	1	1	2	1	3	0	
Gyeongbuk	1,383	16	1,234	566	478	190	0	133	0	Cheongdo Daenam Hospital (119), Bonghwa Pureun Nursing Home (68), Gyeongsan Seo Convalescent Hospital (66), pilgrimage to Israel (41), Yecheon-gun (40), Gumi Elim Church (10), etc.
Gyeongnam	127	18	89	32	50	6	1	20	0	Geochang Church (10), Wings Tower (9), Geochang Woongyang-myeon (8), Nightclubs (2), etc.
Jeju	15	9	2	0	1	0	1	4	0	
Airport	568	568	0	0	0	0	0	0	10	
Total	12,003 (%)	1,325 (60.0)	9,561 (13.3)	5,213 (0.0)	2,951 (6.7)	1,238 (0.0)	159 (6.7)	1,117 (26.7)	56	

* Not classified into a cluster or under investigation

※ The interim classification is based on the reporting location, which may change depending on further epidemiological investigation.



KCDC

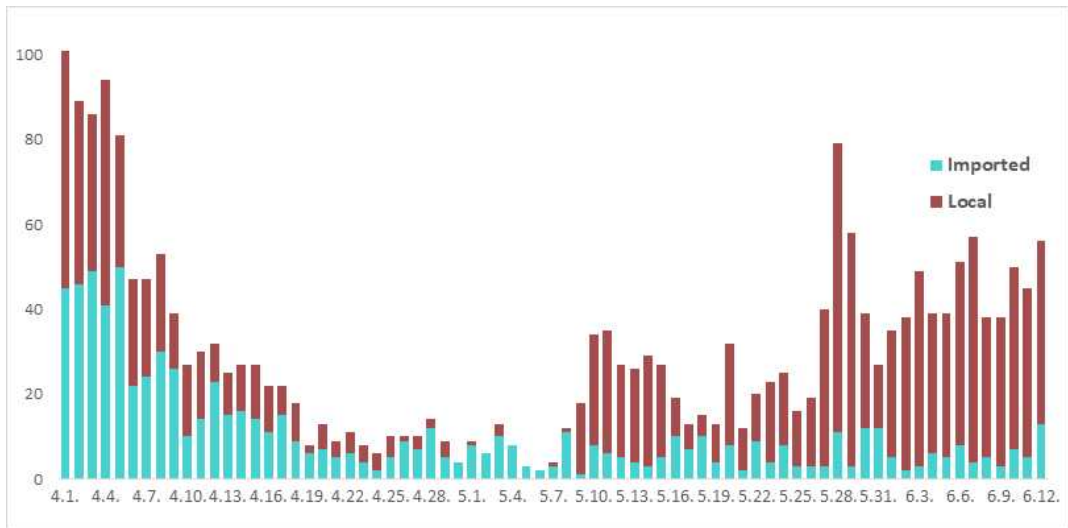
Korea Centers for Disease Control & Prevention

Updates on COVID-19 in Republic of Korea

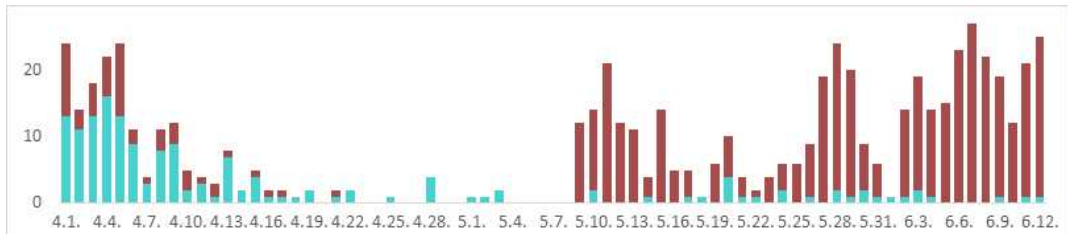
12 June 2020

[Figure 3: Daily new confirmed cases by chain of transmission]

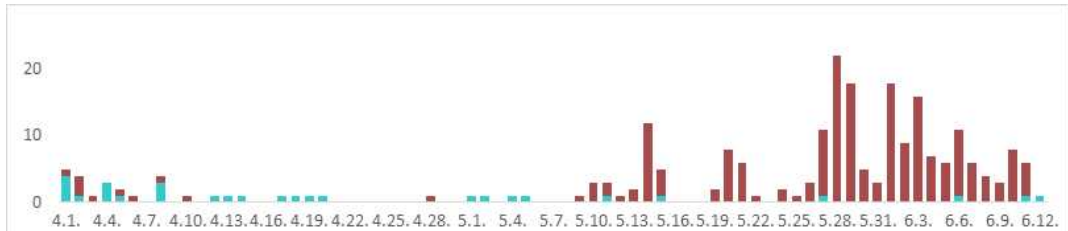
TOTAL



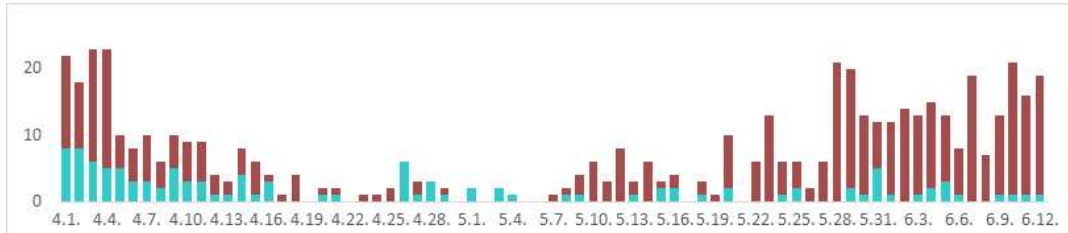
Seoul City



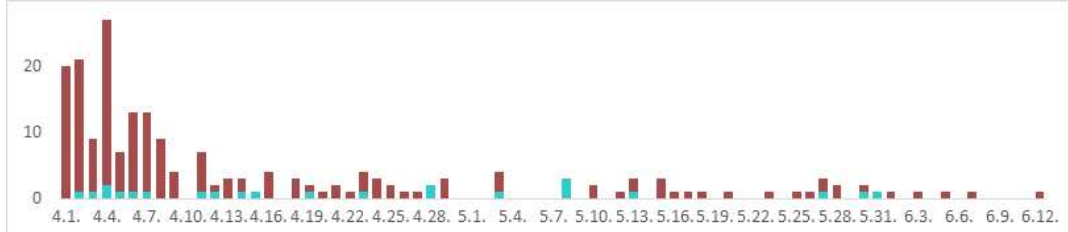
Incheon City



Gyeonggi Province



Daegu City



Gyeongbuk Province





KCDC

Korea Centers for Disease Control & Prevention

Updates on COVID-19 in Republic of Korea

12 June 2020

[Table 5: Age distribution of severe cases]

	5.30	5.31	6.1	6.2	6.3	6.4	6.5	6.6	6.7	6.8	6.9	6.10	6.11	6.12
Total	10	11	12	11	8	9	11	14	14	14	18	20	20	18
Severe	4	3	3	2	1	2	4	7	6	6	11	11	8	6
Very severe	6	8	9	9	7	7	7	7	8	8	7	9	12	12

Age group	Total	Severe (%)	Very severe (%)
Total	18	12 (100.0)	6 (100.0)
80 and above	4	0 (0.0)	4 (33.3)
70-79	4	2 (33.3)	2 (16.7)
60-69	4	1 (16.7)	3 (25.0)
50-59	5	3 (50.0)	2 (16.7)
40-49	1	0 (0.0)	1 (8.3)
30-39	0	0 (0.0)	0 (0.0)
20-29	0	0 (0.0)	0 (0.0)
10-19	0	0 (0.0)	0 (0.0)
0-9	0	0 (0.0)	0 (0.0)

[Figure 4: New cases (for last 2 weeks) by chain of transmission]

