



KCDC

Korea Centers for Disease Control & Prevention

# Updates on COVID-19 in Republic of Korea

2 June 2020

- As of 0:00, 2 June 2020, the total number of confirmed cases is 11,541 (including 1,266 imported cases), of which 10,446 cases have been discharged from isolation. Newly confirmed cases are 38 in total.

[Table 1. Total reported/tested cases]

Period (since 3 Jan)	Total	Tested positive (PCR)				Testing in progress	Tested negative (PCR)
		Confirmed	Discharged from isolation	Under isolation	Deceased		
As of 0:00 1 June (Mon)	921,391	11,503	10,422	810	271	24,058	885,830
<b>As of 0:00 2 June (Tues)</b>	939,851	11,541	10,446	823	272	28,922	899,388
<b>Difference</b>	(+)18,460	(+)38	(+)24	(+)13	(+)1	(+)4,864	(+)13,558

[Table 2. Imported cases in Korea (as of 0:00, 2 June 2020)]

	Total	Region/Country						Where confirmed		Nationality	
		China	Asia ex-China	Europe	Americas	Africa	Australia	Point of Entry	Community	Korean	Other
<b>New</b>	2	0	1	0	1	0	0	1	1	2	0
<b>Total</b>	1,266	19 (1.5%)	226 (17.9%)	475 (37.5%)	537 (42.4%)	8 (0.6%)	1 (0.1%)	537 (42.4%)	729 (57.6%)	1,107 (87.4%)	159 (12.6%)

\* Figures may change based on findings from ongoing local epidemiological investigation efforts.

- Of the 38 new cases, 2 were imported cases and 36 were locally transmitted cases.
  - Of the 2 imported cases, 1 is from America, 1 from Kuwait.
- Related to the Coupang logistics center cluster in Bucheon-si, Gyeonggi Province, in total, 117\* cases have been confirmed as of 12:00 today.
  - \*74 workers of the logistics center; 43 contacts / Gyeonggi=54, Incheon=44, Seoul=19
- From Happy Care Home in Gwangju-si, Gyeonggi Province, one resident who was under quarantine was additionally confirmed. In total, 6 cases have been confirmed.
  - \*2 care workers, 4 care home residents
- Related to Incheon Gyeyang-gu (real estate agency) family, 1 person who was family of a student of Yeongdeungpo Yeonsei Naro Academy was additionally confirmed. In total, 12\* have been confirmed.
  - \*Gyeyang-gu family = 5; Real estate agency partner and family = 2; Yeongdeungpo Yeonsei Naro Academy students = 2; Contacts = 3
- Related to Korea Campus Crusade for Christ, 1 family member of a pastor of Jesus Disciple Church in Gangnam-gu, Seoul was additionally confirmed while under contact management. In total, 9\* have been confirmed.
  - \*Seoul=4; Gyeonggi=5



KCDC

Korea Centers for Disease  
Control & Prevention

# Updates on COVID-19 in Republic of Korea

2 June 2020

- Related to Gyeonggi Gunpo/Anyang pastors group, 6 new cases were confirmed. In total, 15 have been confirmed. Investigation on contacts of each church led by the pastors in the group is underway.  
\*Attendees of the pastors group meeting = 6; Family = 5; Church members = 2; Coworkers = 2
  
- Related to the newly planted churches in near-Seoul region, 22 new cases were confirmed. In total, 45 cases have been confirmed from 23 churches. Contact management and investigation into the source of infection is underway.  
\*Incheon = 30; Seoul = 9; Gyeonggi = 6
  
- In light of the recent ongoing spread of COVID-19 through small group meetings, weekday meetings, and other religious gatherings, KCDC urged faith communities to refrain from gathering and switch to non-face-to-face meetings.
  - In particular, KCDC requested faith communities especially in Seoul and nearby region to conduct all events including bible studies, prayer meetings, and retreats by non-face-to-face methods until the infection risk subsides. People who belong to one of the high-risk groups (including people aged 65 or older, pregnant women, people with chronic health conditions) need to be particularly cautious.
  - If having an on-site service is unavoidable, the religious facility hosting the event must reduce the number of participants to ensure that participants can maintain proper distance, check people for fever and other suspected symptoms, ensure hand washing, and require mask wearing. Providing mass meal or activities that make respiratory droplets travel in air (such as singing, shouting, and chanting) should be avoided.
  
- KCDC, in partnership with the private sector, is working on developing antibody therapy and plasma therapy.
  - An antibody candidate co-discovered by Korea National Institute of Health and Celltrion has been found to have therapeutic efficacy in ferret animal model. KNIH and Celltrion will work on evaluating its efficacy in laboratory mice.
  - KCDC is looking for people who have fully recovered from COVID-19 who can donate their blood to aid the development of plasma therapy. KCDC asked people for active participation.



KCDC

Korea Centers for Disease Control & Prevention

# Updates on COVID-19 in Republic of Korea

2 June 2020

[Table 3: Regional distribution and epidemiological links of the confirmed cases]

Region	Confirmed cases									Other major clusters
	Total	Imported cases	Clusters					Other*	New cases	
			Sub-total	Shin-cheonji	Other clusters	Contacts of confirmed cases	Imported cases			
Seoul	876	279	556	8	461	18	69	41	14	Nightclubs (134), Guro-gu call center (99), Manmin Central Church (41), Dong-an Church-PC Cafe (20), Coupang (19), Samsung Medical Center (7), biblical language study meeting (6), <b>capital area newly planted churches group (5)</b> , KCCC (4), Yeonana News Class (4), etc.
Busan	147	29	88	12	57	18	1	30	0	Onchun Church (39), Suyeong-gu Kindergarten (5), Itaewon clubs (4), etc.
Daegu	6,884	28	6,118	4,511	686	917	4	738	0	Second Mi-Ju Hospital (196), Hansarang Convalescent Hospital (128), Daesil Convalescent Hospital (100), Fatima Hospital (37), Itaewon clubs (3), etc.
Incheon	232	48	177	2	162	6	7	7	8	Nightclubs (53), Coupang (43), <b>capital area newly planted churches gathering (22)</b> , Guro-gu call center (20), real estate agency (5), etc.
Gwangju	32	16	16	9	0	1	6	0	0	
Daejeon	46	15	22	2	12	8	0	9	0	Korea Forest Engineer Institute (3), etc.
Ulsan	52	21	24	16	2	3	3	7	0	
Sejong	47	4	42	1	38	3	0	1	0	Ministry of Oceans and Fisheries (30), gym facilities (8)
Gyeonggi	867	190	624	29	478	54	63	53	15	Grace River Church in Seongnam (72), Itaewon clubs (59), Uijeongbu St. Mary's Hospital (50), Guro-gu call center-Bucheon SaengMyeongSu Church (48), <b>Anyang-Gunpo pastors group (10)</b> , biblical language study meeting (7), <b>Happy Care Home (6)</b> , <b>Coupang (5)</b> , <b>capital area newly planted churches group (4)</b> , etc.
Gangwon	57	16	34	17	17	0	0	7	0	Uijeongbu St. Mary's Hospital (10), Apartments in Wonju City (3), Itaewon nightclubs (2), etc.
Chungbuk	60	8	42	6	27	7	2	10	0	Goesan-gun Jangyeon-myeon (11), Itaewon clubs (9), Guro-gu call center (2), etc.
Chungnam	146	13	123	0	121	1	1	10	0	Gym facilities in Cheonan (103), research center in Seosan (9), etc.
Jeonbuk	21	10	6	1	5	0	0	5	0	Itaewon clubs (2)
Jeonnam	20	12	5	1	1	2	1	3	0	
Gyeongbuk	1,379	14	1,233	566	477	190	0	132	0	Cheongdo Daenam Hospital (120), Bonghwa Pureun Nursing Home (68), Gyeongsan Seo Convalescent Hospital (66), pilgrimage to Israel (49), Yecheon-gun (41), Gumi Elim Church (8), etc.
Gyeongnam	123	17	87	32	48	6	1	19	0	Geochang Church (10), Wings Tower (10), Geochang Woongyang-myeon (8), Itaewon clubs (2), etc.
Jeju	15	9	2	0	1	0	1	4	0	
Airport	537	537	0	0	0	0	0	0	1	
Total	11,541 (%)	1,266 (60.0)	9,199 (13.3)	5,213 (6.7)	2,593 (0.0)	1,234 _ (6.7) _ 3	159 (26.7)	1,076 (0.0)	38	

\* Not classified into a cluster or under investigation

※ The interim classification is based on the reporting location, which may change depending on further epidemiological investigation.



KCDC

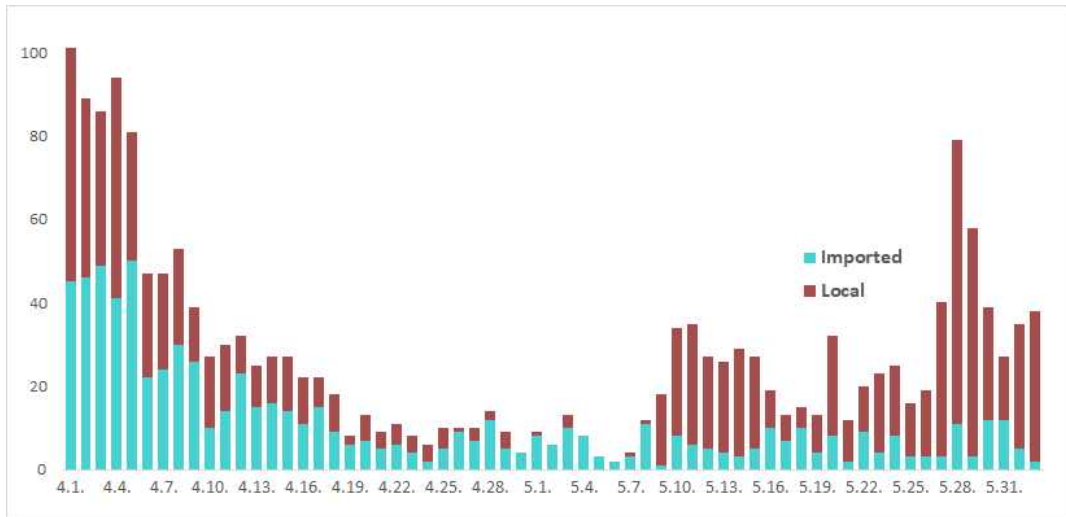
Korea Centers for Disease Control & Prevention

# Updates on COVID-19 in Republic of Korea

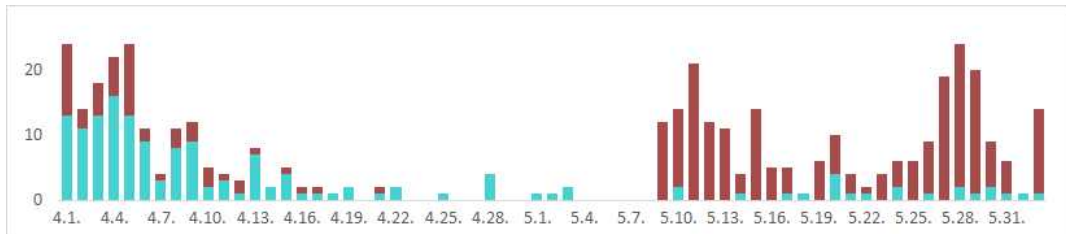
2 June 2020

[Figure 1: Daily new confirmed cases by chain of transmission]

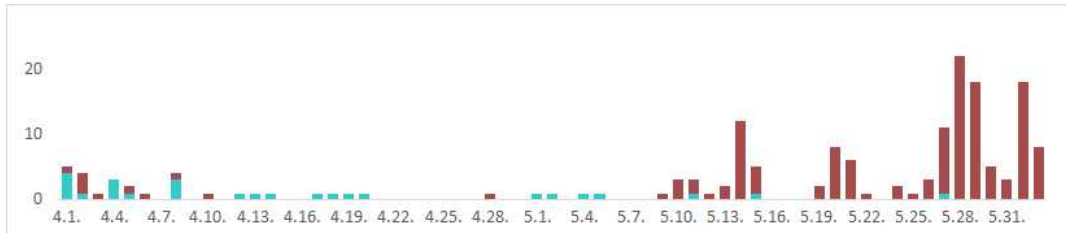
TOTAL



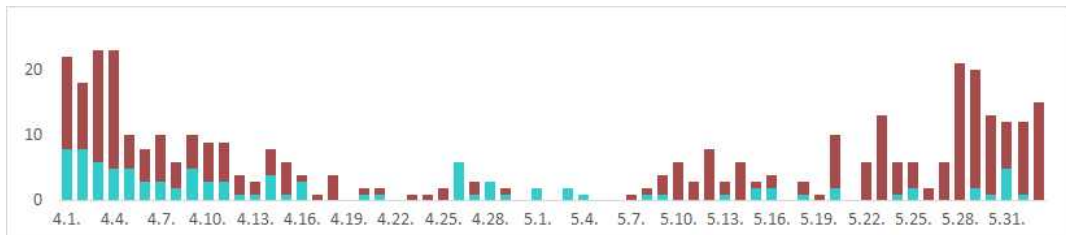
Seoul City



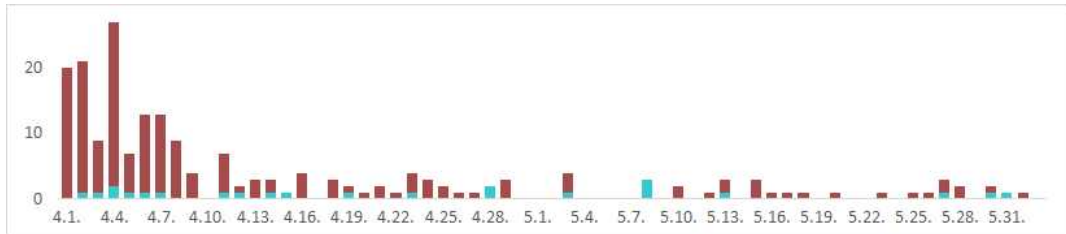
Incheon City



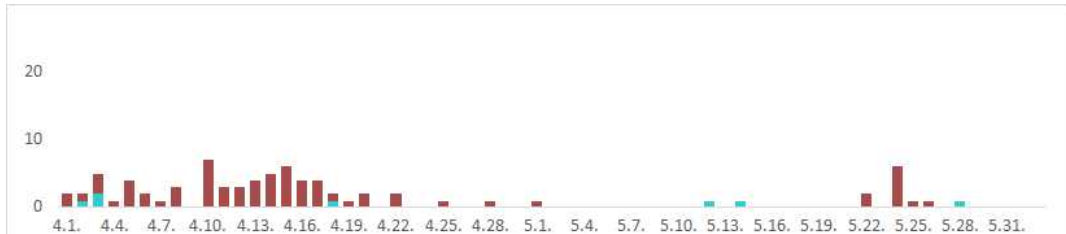
Gyeonggi Province



Daegu City



Gyeongbuk Province





KCDC

Korea Centers for Disease Control & Prevention

# Updates on COVID-19 in Republic of Korea

2 June 2020

[Table 4: Age distribution of severe cases]

Age group	Total	Severe ( % )	Very severe ( % )
Total	11	2 ( 100.0 )	9 ( 100.0 )
80 and above	4	1 ( 50.0 )	3 ( 33.3 )
70-79	2	0 ( 0.0 )	2 ( 22.2 )
60-69	2	1 ( 50.0 )	1 ( 11.1 )
50-59	1	0 ( 0.0 )	1 ( 11.1 )
40-49	2	0 ( 0.0 )	2 ( 22.2 )
30-39	0	0 ( 0.0 )	0 ( 0.0 )
20-29	0	0 ( 0.0 )	0 ( 0.0 )
10-19	0	0 ( 0.0 )	0 ( 0.0 )
0-9	0	0 ( 0.0 )	0 ( 0.0 )

[Figure 2: New cases (for last 2 weeks) by chain of transmission]

