



KCDC

Korea Centers for Disease Control & Prevention

# Updates on COVID-19 in Republic of Korea

4 June 2020

- As of 0:00, 4 June 2020, the total number of confirmed cases is 11,629 (including 1,275 imported cases), of which 10,499 cases have been discharged from isolation. Newly confirmed cases are 39 in total.

[Table 1. Total reported/tested cases]

Period (since 3 Jan)	Total	Tested positive (PCR)				Testing in progress	Tested negative (PCR)
		Confirmed	Discharged from isolation	Under isolation	Deceased		
As of 0:00 3 June (Wed)	956,852	11,590	10,467	850	273	27,865	917,397
<b>As of 0:00 4 June (Thurs)</b>	973,858	11,629	10,499	857	273	28,199	934,030
<b>Difference</b>	(+)17,006	(+)39	(+)32	(+)7	0	(+)334	(+)16,633

[Table 2. Imported cases in Korea (as of 0:00, 4 June 2020)]

	Total	Region/Country						Where confirmed		Nationality	
		China	Asia ex-China	Europe	Americas	Africa	Australia	Point of Entry	Community	Korean	Other
<b>New</b>	6	0	5	0	1	0	0	2	4	3	3
<b>Total</b>	1,275	19 (1.5%)	233 (18.3%)	475 (37.3%)	539 (42.3%)	8 (0.6%)	1 (0.1%)	539 (42.3%)	736 (57.7%)	1,111 (87.1%)	164 (12.9%)

\* Figures may change based on findings from ongoing local epidemiological investigation efforts.

- Of the 39 new cases, 6 were imported cases and 33 were locally transmitted cases.
  - Of the 6 imported cases, 1 is from America, 2 from Pakistan, 1 from Qatar, 1 from the Philippines.
- Related to the Coupang logistics center cluster in Bucheon-si, Gyeonggi Province, 1 additional case was confirmed. In total, 120\* cases have been confirmed.
  - \* 77 workers of the logistics center; 43 contacts / Gyeonggi=55, Incheon=44, Seoul=21
- Related to the newly planted churches in the Seoul Metropolitan Region, 11 new cases were confirmed. In total, 66\* cases have been confirmed. Contact management and investigation into the source of infection is underway.
  - \*Incheon = 38; Seoul = 18; Gyeonggi = 10
- Related to the Gunpo/Anyang pastors group in Gyeonggi Province 3 additional cases were confirmed. In total, 18\* cases have been confirmed.
  - \*Attendees of the pastors group meeting = 6; Family = 5; Church members = 4; Coworkers =2; Contact = 1
- Related to Korea Campus Crusade for Christ, 1 additional case was confirmed. The new case is an intern pastor at Jesus Disciple Church in Gangnam-gu, Seoul City. In total, 11\* cases have been confirmed.
  - \*Seoul = 5; Gyeonggi = 6



KCDC

Korea Centers for Disease  
Control & Prevention

## Updates on COVID-19 in Republic of Korea

4 June 2020

- Related to KB Life Insurance TM Service Center in Jung-gu, Seoul City, 1 additional case was confirmed while under self-quarantine. In total, 12 cases have been confirmed.
- Related to Richway in Gwanak-gu, Seoul, after the first case was confirmed on 2 May, additional 9 cases were confirmed. In total, 10 case have been confirmed to date. Workers and visitors of Richway are being tested.
- Related to a family in Seocho-gu, Seoul City, 1 additional case was confirmed. The new case was a staff at AXA General Insurance Call Center in Jongno-gu, Seoul. In total, 6 cases have been confirmed related to this cluster.
- The data on chains of transmission for the infection during the last 2 weeks show that most (71.8%, 364 cases) are local community clusters. 8.9% (45 cases) are under investigation (on the chain of transmission). 96.2% (350 cases) of the local cluster cases are in Seoul Metropolitan Region. 73.3% (33 cases) of the case under investigation are in Seoul Metropolitan Region.
- Recently, COVID-19 transmissions are occurring through various venues such as religious small group meetings, PC cafes, after-school academies in Seoul Metropolitan Region (Seoul and nearby areas) with high population density and foot traffic. If the transmission continues and occurs at a highly crowded and confined space with a large number of people, a massive outbreak may occur at any time.
  - Since COVID-19 outbreak can occur from any venue under crowded, confined, and close-contact environment, residents of the Seoul Metropolitan Region are advised to postpone social plans and gatherings or use non-face-to-face alternatives and avoid using public venues such as restaurants and bars.
  - In daily routine, mask wearing, frequent hand washing, and physical distancing should be practiced.
  - Religious facilities are advised to cancel or postpone or switch to non-face-to-face methods all small group gatherings that involve droplet-producing activities such as conversing, singing, and eating together in confined spaces.
  - If having an on-site service is unavoidable, the religious facility hosting the event must reduce the number of participants to ensure that participants can maintain proper distance, check people for fever and other suspected symptoms, ensure hand washing, and require mask wearing. Providing mass meal or activities that make respiratory droplets travel in air (such as singing, shouting, and chanting) should be avoided.
- Nightlife venues, singing rooms, after-school private academies, and PC cafes in Seoul Metropolitan Region are under gathering ban or recommendation to limit operation as per the executive action of respective municipalities or the Central Disaster Management Headquarters.



KCDC

Korea Centers for Disease  
Control & Prevention

## Updates on COVID-19 in Republic of Korea

4 June 2020

- If operation is unavoidable, such facilities must follow all infection control measures including maintaining a log of all visitors, requiring mask wearing, preventing entry of symptomatic persons, checking workers for symptoms, sending symptomatic worker home, designating an infection control manager, disinfecting indoor spaces, and ensuring at least 2 meters of distance between users.
- KCDC requested municipalities to enhance inspections to ensure high compliance of the infection control measures by such facilities.
- For the COVID-19 plasma therapy development, 6 new recovered patients signed up to participate in blood donation. (In total, 18 have signed up.) KCDC thanked the donors for support and requested more recovered patients for participation.
  - Concentrated formulations of antibodies and immunoglobulins in the blood plasma of recovered patients can be used to treat other COVID-19 patients. This requires a lot of blood.
  - People aged 18-65 who have been confirmed with COVID-19, fully recovered, discharged (released) from isolation (at least 14 days ago) are able to participate.
- \* Participating hospitals: Korea University Ansan Hospital, Keimyung University Dongsan Hospital, Kyungpook National University Hospital, Daegu Fatima Hospital / For inquiries, dial 1522-6487



KCDC

Korea Centers for Disease Control & Prevention

# Updates on COVID-19 in Republic of Korea

4 June 2020

[Table 3: Regional distribution and epidemiological links of the confirmed cases]

Region	Confirmed cases									Other major clusters
	Total	Imported cases	Clusters					Other*	New cases	
			Sub-total	Shin-cheonji	Other clusters	Contacts of confirmed cases	Imported cases			
Seoul	909	282	581	8	485	19	69	46	14	Nightclubs (134), Guro-gu call center (99), Manmin Central Church (41), <b>Coupang (21)</b> , Dong-an Church-PC Cafe (20), <b>Incheon newly planted churches group (17)</b> , KB Life Insurance PM Service Center (11), Samsung Medical Center (7), biblical language study meeting (6), <b>KCCC (5)</b> , <b>Richway (4)</b> , Yeonana News Class (4), etc.
Busan	147	29	88	12	57	18	1	30	0	Onchun Church (39), Suyeong-gu Kindergarten (5), Itaewon clubs (4), etc.
Daegu	6,885	28	6,118	4,511	686	917	4	739	0	Second Mi-Ju Hospital (196), Hansarang Convalescent Hospital (128), Daesil Convalescent Hospital (100), Fatima Hospital (37), Itaewon clubs (3), etc.
Incheon	256	48	198	2	182	7	7	10	7	Nightclubs (54), Coupang (44), <b>Incheon newly planted churches group (38)</b> , Guro-gu call center (20), real estate agency (5), etc.
Gwangju	32	16	16	9	0	1	6	0	0	
Daejeon	46	15	22	2	12	8	0	9	0	Korea Forest Engineer Institute (3), etc.
Ulsan	52	21	24	16	2	3	3	7	0	
Sejong	47	4	42	1	38	3	0	1	0	Ministry of Oceans and Fisheries (30), gym facilities (8)
Gyeonggi	894	193	647	29	499	56	63	54	15	Grace River Church in Seongnam (72), Itaewon clubs (59), <b>Coupang (55)</b> , Uijeongbu St. Mary's Hospital (50), Guro-gu call center-Bucheon SaengMyeongSu Church (48), <b>Anyang-Gunpo pastors group (16)</b> , <b>Incheon newly planted churches group (10)</b> , <b>Happy Care Home (7)</b> , biblical language study meeting (7), <b>KCCC (6)</b> , real estate agency (3), etc.
Gangwon	57	16	34	17	17	0	0	7	0	Uijeongbu St. Mary's Hospital (10), Apartments in Wonju City (3), Itaewon nightclubs (2), etc.
Chungbuk	60	8	42	6	27	7	2	10	0	Goesan-gun Jangyeon-myeon (11), Itaewon clubs (9), Guro-gu call center (2), etc.
Chungnam	146	13	123	0	121	1	1	10	0	Gym facilities in Cheonan (103), research center in Seosan (9), etc.
Jeonbuk	21	10	6	1	5	0	0	5	0	Itaewon clubs (2)
Jeonnam	20	12	5	1	1	2	1	3	0	
Gyeongbuk	1,380	15	1,233	566	477	190	0	132	1	Cheongdo Daenam Hospital (120), Bonghwa Pureun Nursing Home (68), Gyeongsan Seo Convalescent Hospital (66), pilgrimage to Israel (49), Yecheon-gun (41), Gumi Elim Church (8), etc.
Gyeongnam	123	17	87	32	48	6	1	19	0	Geochang Church (10), Wings Tower (10), Geochang Woongyang-myeon (8), Itaewon clubs (2), etc.
Jeju	15	9	2	0	1	0	1	4	0	
Airport	539	539	0	0	0	0	0	0	2	
Total	11,629 (%)	1,275 (60.0)	9,268 (13.3)	5,213 (6.7)	2,658 (0.0)	1,238 (6.7)	159 (26.7)	1,086 (0.0)	39	

\* Not classified into a cluster or under investigation

※ The interim classification is based on the reporting location, which may change depending on further epidemiological investigation.



KCDC

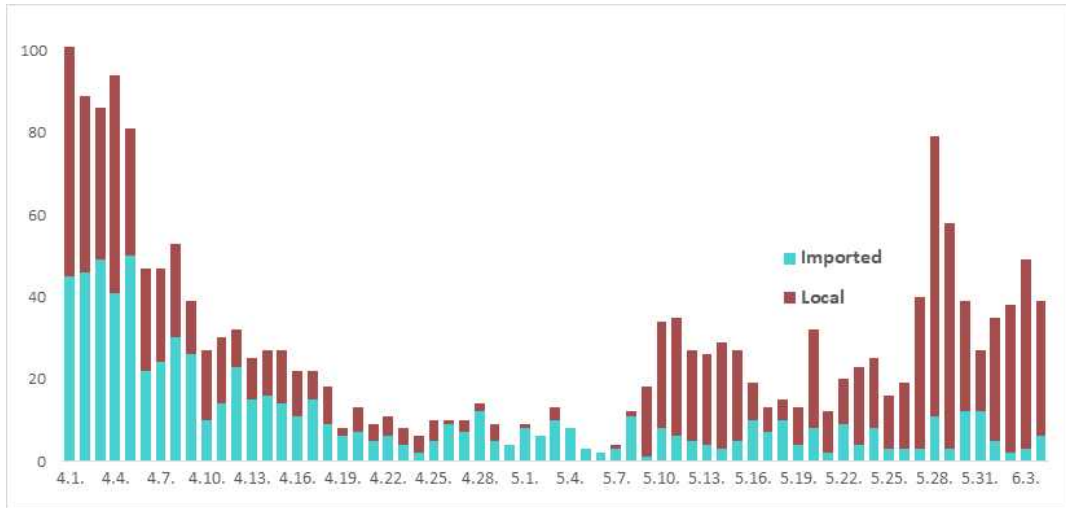
Korea Centers for Disease Control & Prevention

# Updates on COVID-19 in Republic of Korea

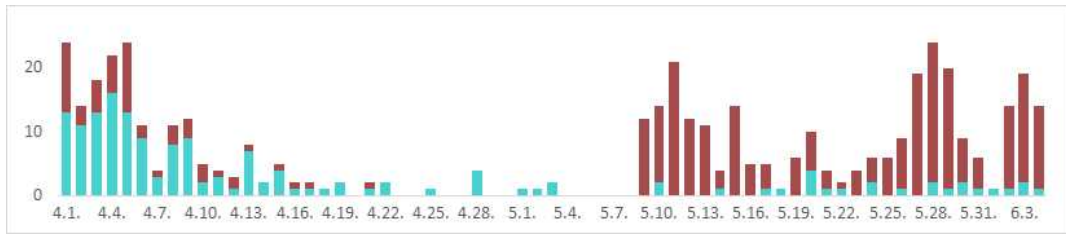
4 June 2020

[Figure 1: Daily new confirmed cases by chain of transmission]

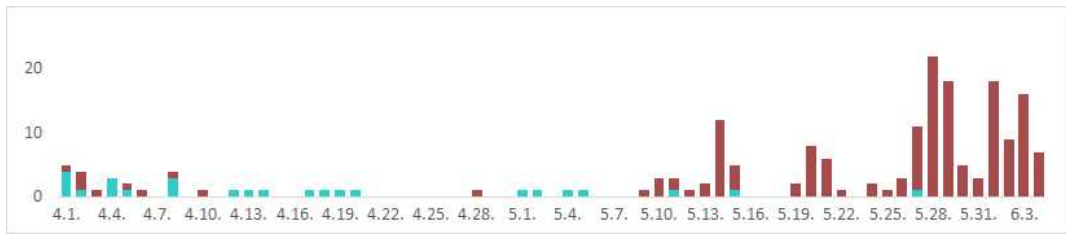
TOTAL



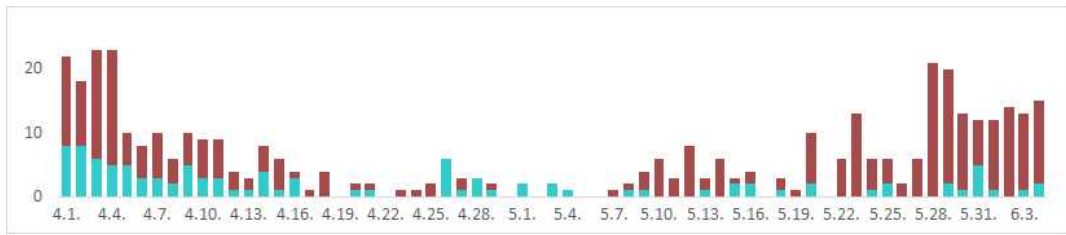
Seoul City



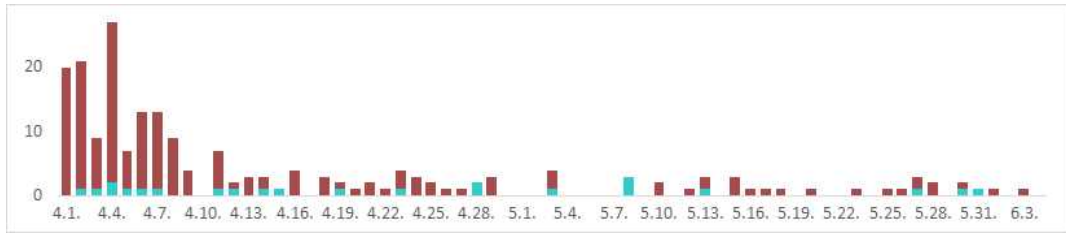
Incheon City



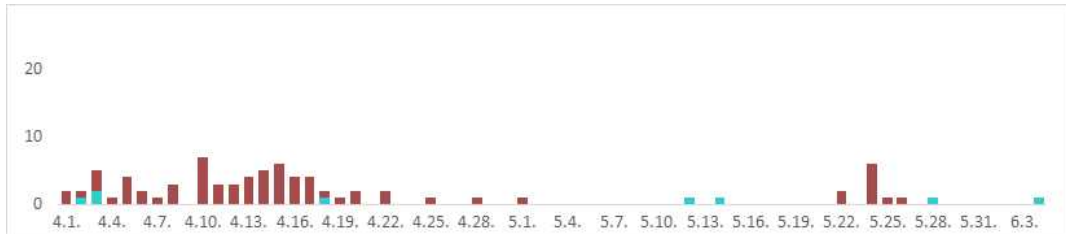
Gyeonggi Province



Daegu City



Gyeongbuk Province





KCDC

Korea Centers for Disease Control & Prevention

# Updates on COVID-19 in Republic of Korea

4 June 2020

[Table 4: Age distribution of severe cases]

Age group	Total	Severe ( % )	Very severe ( % )
Total	9	2 ( 100.0 )	7 ( 100.0 )
80 and above	5	2 ( 100.0 )	3 ( 42.9 )
70-79	1	0 ( 0.0 )	1 ( 14.3 )
60-69	0	0 ( 0.0 )	0 ( 0.0 )
50-59	1	0 ( 0.0 )	1 ( 14.3 )
40-49	2	0 ( 0.0 )	2 ( 28.6 )
30-39	0	0 ( 0.0 )	0 ( 0.0 )
20-29	0	0 ( 0.0 )	0 ( 0.0 )
10-19	0	0 ( 0.0 )	0 ( 0.0 )
0-9	0	0 ( 0.0 )	0 ( 0.0 )

[Figure 2: New cases (for last 2 weeks) by chain of transmission]

