



KCDC

Korea Centers for Disease Control & Prevention

# Updates on COVID-19 in Republic of Korea

7 June 2020

- As of 0:00, 7 June 2020, the total number of confirmed cases is 11,776 (including 1,292 imported cases), of which 10,552 cases have been discharged from isolation. Newly confirmed cases are 57 in total.

[Table 1. Total reported/tested cases]

Period (since 3 Jan)	Total	Tested positive (PCR)				Testing in progress	Tested negative (PCR)
		Confirmed	Discharged from isolation	Under isolation	Deceased		
As of 0:00 6 June (Sat)	1,005,305	11,719	10,531	915	273	27,954	965,632
<b>As of 0:00 7 June (Sun)</b>	1,012,769	11,776	10,552	951	273	26,481	974,512
<b>Difference</b>	(+)7,464	(+)57	(+)21	(+)36	0	(-)1,473	(+)8,880

[Table 2. Imported cases in Korea (as of 0:00, 7 June 2020)]

	Total	Region/Country						Where confirmed		Nationality	
		China	Asia ex-China	Europe	Americas	Africa	Australia	Point of Entry	Community	Korean	Other
<b>New</b>	4	0	2	0	2	0	0	2	2	2	2
<b>Total</b>	1,292	19 (1.5%)	239 (18.5%)	476 (36.8%)	549 (42.5%)	8 (0.6%)	1 (0.1%)	547 (42.3%)	745 (57.7%)	1,125 (87.1%)	167 (12.9%)

\* Figures may change based on findings from ongoing local epidemiological investigation efforts.

- Of the 57 new cases, 4 were imported cases and 53 were locally transmitted cases.
  - Of the 4 imported cases, 2 are from America, 1 from India, 1 from Indonesia.
- Related to the Coupang logistics center cluster in Bucheon-si, Gyeonggi Province, 3 additional cases were confirmed. In total, 133\* cases have been confirmed.
  - \* 79 workers of the logistics center; 54 contacts / Gyeonggi=63, Incheon=49, Seoul=21
- Related to the newly planted churches in the Seoul Metropolitan Region, 2 additional cases were confirmed. In total, 82\* cases have been confirmed.
  - \*Related to church = 31; Contacts = 51 / Incheon = 44; Seoul = 23; Gyeonggi = 15
- Related to Richway in Gwanak-gu, Seoul, 3 additional cases were confirmed. In total, 45 case have been confirmed. All persons who have visited Richway (Seoul Gwangak-gu Siheungdae-ro 552 Seocheon Building Floor 8) between 21 May ~ 3 June are advised to get tested regardless of symptoms.
  - \*Seoul = 27; Gyeonggi = 7; Incheon = 8; Chungnam = 2; Gangwon = 1
- In Yongin-si, Gyeonggi Province, investigation of the transmission route of the confirmed case of 2 June revealed that the case had met with a pastor from a church Yongin-si (Grace Forest Church) on 27 May. From testing of all contacts, 7\* additional cases were confirmed. Further epidemiological investigation on chains of transmission is underway.
  - \*Family = 1; Acquaintance = 6 / Seoul = 4; Gyeonggi = 2; Incheon = 1



KCDC

Korea Centers for Disease Control & Prevention

# Updates on COVID-19 in Republic of Korea

7 June 2020

[Table 4: Regional distribution and epidemiological links of the confirmed cases]

Region	Confirmed cases									Other major clusters
	Total	Imported cases	Clusters					Other*	New cases	
			Sub-total	Shin-cheonji	Other clusters	Contacts of confirmed cases	Imported cases			
Seoul	974	282	638	8	541	20	69	54	27	Nightclubs (135), Guro-gu call center (99), Manmin Central Church (41), Dong-an Church-PC Cafe (28), <b>Richway (27)</b> , <b>Incheon newly planted churches group (23)</b> , Coupang (21), KB Life Insurance PM Service Center (11), biblical language study meeting (6), KCCC (6), <b>Brothers in Yongin/Goyang (5)</b> , real-estate agency in Gyeong-gu (3), etc.
Busan	147	29	88	12	57	18	1	30	0	Onchun Church (39), Suyeong-gu Kindergarten (5), Itaewon clubs (4), etc.
Daegu	6,887	28	6,118	4,511	686	917	4	741	1	Second Mi-Ju Hospital (196), Hansarang Convalescent Hospital (124), Daesil Convalescent Hospital (101), Fatima Hospital (39), Nightclubs (2), etc.
Incheon	279	49	222	2	207	6	7	8	6	Nightclubs (54), <b>Coupang (49)</b> , <b>Incheon newly planted churches group (43)</b> , Guro-gu call center (19), real estate agency (9), <b>Richway (7)</b> , Jesus Malsseum Silcheon Church (5), <b>Brothers in Yongin/Goyang (2)</b> , etc.
Gwangju	32	16	16	9	0	1	6	0	0	
Daejeon	46	15	22	2	12	8	0	9	0	Korea Forest Engineer Institute (3), etc.
Ulsan	53	22	24	16	2	3	3	7	0	
Sejong	47	4	42	1	38	3	0	1	1	Ministry of Oceans and Fisheries (31), gym facilities (8)
Gyeonggi	934	197	682	29	536	54	63	55	19	Grace River Church in Seongnam (67), Nightclubs (59), <b>Coupang (63)</b> , Uijeongbu St. Mary's Hospital (50), Guro-gu call center-Bucheon SaengMyeongSu Church (50), <b>Anyang-Gunpo pastors group (17)</b> , <b>Incheon newly planted churches group (16)</b> , <b>Big Tree Church (10)</b> , biblical language study meeting (9), Happy Care Home (8), KCCC (6), <b>Richway (7)</b> , <b>Brothers in Yongin/Goyang (4)</b> , real estate agency (3), etc.
Gangwon	58	16	35	17	18	0	0	7	0	Uijeongbu St. Mary's Hospital (10), Apartments in Wonju (4), Nightclubs (2), etc.
Chungbuk	61	9	42	6	27	7	2	10	1	Goesan-gun Jangyeon-myeon (11), Itaewon clubs (9), Guro-gu call center (2), etc.
Chungnam	148	13	125	0	123	1	1	10	0	Gym facilities in Cheonan (103), research center in Seosan (8), Richway (2), etc.
Jeonbuk	21	10	6	1	5	0	0	5	0	Nightclubs (2)
Jeonnam	20	12	5	1	1	2	1	3	0	
Gyeongbuk	1,383	16	1,234	566	478	190	0	133	0	Cheongdo Daenam Hospital (119), Bonghwa Pureun Nursing Home (68), Gyeongsan Seo Convalescent Hospital (66), pilgrimage to Israel (41), Yecheon-gun (40), Gumi Elim Church (10), etc.
Gyeongnam	124	18	87	32	48	6	1	19	0	Geochang Church (10), Wings Tower (9), Geochang Woongyang-myeon (8), Nightclubs (2), etc.
Jeju	15	9	2	0	1	0	1	4	0	
Airport	547	547	0	0	0	0	0	0	2	
Total	11,776 (%)	1,292 (60.0)	9,388 (13.3)	5,213 (0.0)	2,780 (6.7)	1,236 (0.0)	159 (6.7)	1,096 (26.7)	57	

\* Not classified into a cluster or under investigation

※ The interim classification is based on the reporting location, which may change depending on further epidemiological investigation.



KCDC

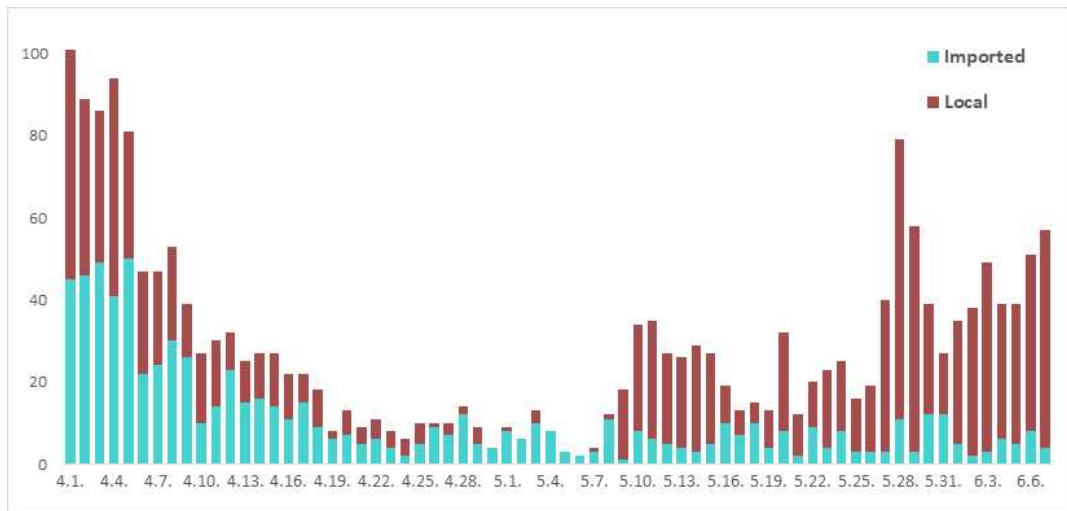
Korea Centers for Disease Control & Prevention

# Updates on COVID-19 in Republic of Korea

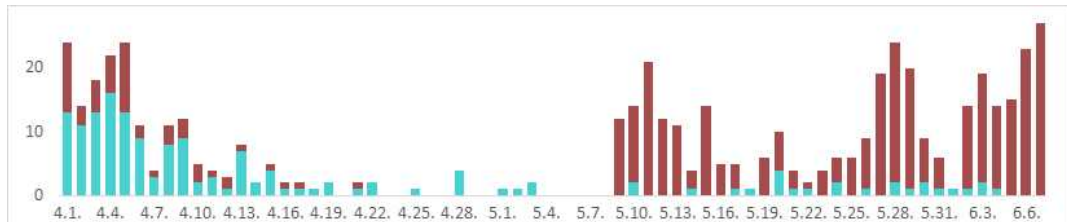
7 June 2020

[Figure 3: Daily new confirmed cases by chain of transmission]

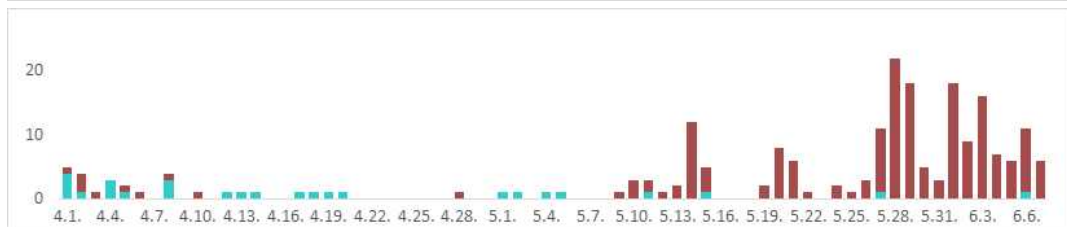
TOTAL



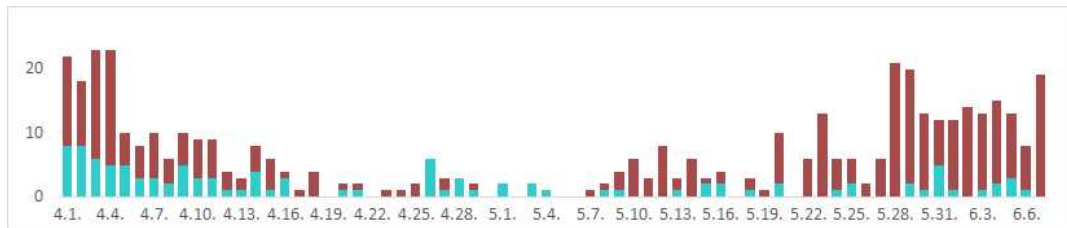
Seoul City



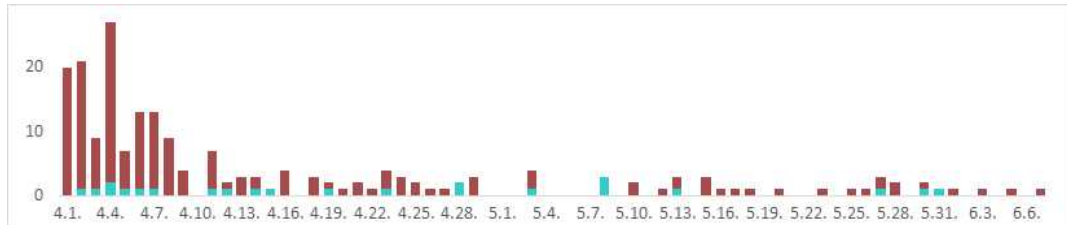
Incheon City



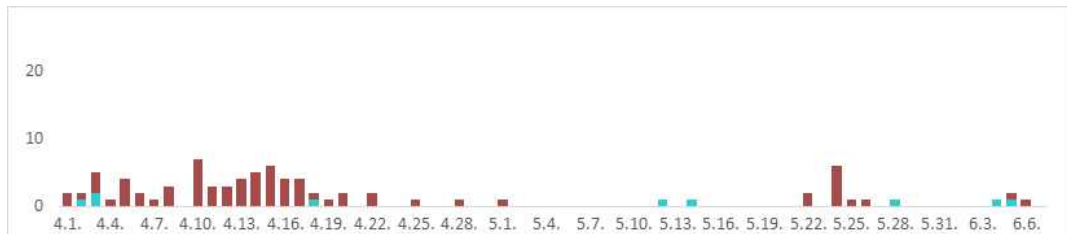
Gyeonggi Province



Daegu City



Gyeongbuk Province





KCDC

Korea Centers for Disease Control & Prevention

# Updates on COVID-19 in Republic of Korea

7 June 2020

[Table 5: Age distribution of severe cases]

Age group	Total	Severe ( % )	Very severe ( % )
Total	14	6 ( 100.0 )	8 ( 100.0 )
80 and above	6	3 ( 50.0 )	3 ( 37.5 )
70-79	1	0 ( 0.0 )	1 ( 12.5 )
60-69	1	0 ( 0.0 )	1 ( 12.5 )
50-59	4	3 ( 50.0 )	1 ( 12.5 )
40-49	2	0 ( 0.0 )	2 ( 25.0 )
30-39	0	0 ( 0.0 )	0 ( 0.0 )
20-29	0	0 ( 0.0 )	0 ( 0.0 )
10-19	0	0 ( 0.0 )	0 ( 0.0 )
0-9	0	0 ( 0.0 )	0 ( 0.0 )

[Figure 4: New cases (for last 2 weeks) by chain of transmission]

