



KCDC

Korea Centers for Disease Control & Prevention

# The Updates of COVID-19 in Republic of Korea

As of 22 March, 2020

- As of 0:00, 22 March 2020, the total number of confirmed cases is 8,897 with 2,909 cases discharged from isolation. Newly confirmed cases are 98 in total.

Period (since 3 Jan)	Total	Tested positive				Being tested	Tested negative
		Confirmed	Discharged	Isolated	Deceased		
As of 0:00 21 March (Sat)	327,509	8,799	2,612	6,085	102	15,704	303,006
<b>As of 0:00 22 March (Sun)</b>	331,780	8,897	2,909	5,884	104	14,540	308,343
Differences	4,271	98	297	-201	2	-1,164	5,337

- Regional distribution of total confirmed cases:

	Total	City							
		Seoul	Busan	Daegu	Incheon	Gwangju	Daejeon	Ulsan	Sejong
Isolated	5,884	260	38	4,205	32	9	18	24	38
Discharged	2,909	64	69	2,107	8	10	6	12	3
Deceased	104	0	1	75	0	0	0	0	0
<b>Total</b>	8,897	324	108	6,387	40	19	24	36	41
(Change)	(98)	(10)	-	(43)	-	(1)	(2)	-	-

	Province									Other Airport Screening
	Gyeong-gi	Gang-won	Chung-buk	Chung-nam	Jeon-buk	Jeon-nam	Gyeong-buk	Gyeong-nam	Jeju	
isolated	252	16	26	81	3	3	798	46	1	34
discharged	82	13	9	39	7	3	432	42	3	0
deceased	3	1	0	0	0	0	24	0	0	0
<b>Total</b>	337	30	35	120	10	6	1,254	88	4	34
(Change)	(16)	-	(1)	(1)	-	(1)	(11)	(1)	-	(11)

- Epidemiological links have been found for 80.9% of the total cases; 19.1% are either under investigation or sporadic cases. More details on the epidemiological links within each province or city are shown as following table.

- From Guro-gu call center in Seoul, 4 additional cases (3 from the 11<sup>th</sup> floor, 1 contact) were confirmed. The current total is 152 confirmed cases since 8 March. Epidemiological investigation and contact tracing on the newly confirmed cases are underway.
- From Bundang Jesaeng Hospital in Gyeonggi province, 3 additional cases (3 staffs in self-quarantine) were confirmed. A total of 45 cases have been confirmed so far.
- In Daegu, every person at high-risk facilities is being tested. 94.6% completed testing and 18 additional confirmed cases since 21 March.



KCDC

Korea Centers for Disease Control & Prevention

# The Updates of COVID-19 in Republic of Korea

As of 22 March, 2020

Region	Sub-total	Epidemiological links		Others*	Newly confirmed
		n (%)	Details		
Seoul	324	230 (71.0%)	Guro-gu call center (93), Dongan Church-PC Cafe (20), Eunpyeong St Mary's Hospital (14), Seongdong-gu Apartments (13), Jongno-gu (10), Shincheonji (6), Seongnam Grace River Church (4), etc.	94 (29.0%)	10
Busan	108	78 (72.2%)	Onchun Church (32), Shincheonji (11), Suyeong-gu Kindergarten (5), Haeundae-gu Jangsan Catholic Church (4), Jin-gu private academy (4), Daenam Hospital (1), etc.	30 (27.8%)	0
Daegu	6,387	5,302 (83.0%)	Shincheonji (4,381), contacts of confirmed cases (687), Hansarang Convalescent Hospital (85), KimSin Convalescent Hospital (29), Kwak's Hospital (15), Daesil Convalescent Hospital (64), Baesung Hospital (8), etc.	1,085 (17.0%)	43
Incheon	40	32 (80.0%)	Guro-gu call center (19), contacts of confirmed cases (5), company in Seocho-gu (3), Shincheonji (2), existing imported cases (1)	8 (20.0%)	0
Gwangju	19	15 (78.9%)	Shincheonji (9), contacts of confirmed cases (5), existing imported cases (1)	4 (21.1%)	1
Daejeon	24	13 (54.2%)	Contacts of confirmed cases (9), Shincheonji (2), Seosan research center (2)	11 (45.8%)	2
Ulsan	36	26 (72.2%)	Shincheonji (16), contacts of confirmed cases (10)	10 (27.8%)	0
Sejong	41	38 (92.7%)	Ministry of Oceans and Fisheries (29), gym facilities (8), Shincheonji (1)	3 (7.3%)	0
Gyeonggi	337	275 (81.6%)	Seongnam Grace River Church (61), Guro-gu call center-Bucheon SaengMyeongSu Church (38), Bundang Je-saeng Hospital (40), Shincheonji (30), Suwon SaengMyeongSaem Church (12), etc.	62 (18.4%)	16
Gangwon	30	21 (70.0%)	Shincheonji (20), gym facilities in Cheonan (1)	9 (30.0%)	0
Chungbuk	35	28 (80.0%)	Shincheonji (11), Goesan-gun Jangyeon-myeon (11), contacts of confirmed cases (6)	7 (20.0%)	1
Chungnam	120	112 (93.3%)	Gym facilities in Cheonan (103), Seosan research center (8), Seongnam Grace River Church (1)	8 (6.7%)	1
Jeonbuk	10	4 (40.0%)	contacts of confirmed cases (2), existing imported cases (1), Shincheonji (1)	6 (60.0%)	0
Jeonnam	6	4 (66.7%)	Shincheonji (1), existing imported cases (1), contacts of confirmed cases (2)	2 (33.3%)	1
Gyeongbuk	1,254	918 (73.2%)	Shincheonji (528), Cheongdo Daenam Hospital (120), Bonghwa Pureun Nursing Home (68), pilgrimage to Israel (49), Milal Shelter (27), Gyeongsan Seorin Nursing Home (25), Gyeongsan Cham Joeun Community Center (18), etc.	336 (26.8%)	11
Gyeongnam	88	71 (80.7%)	Shincheonji (32), Geochang Church (10), Geochang Woongyang-myeon (8), Hanmaeum Changwon Hospital (7), Changyeong coin karaoke (7), contacts of confirmed cases (5), Busan Oncheon Church (2)	17 (19.3%)	1
Jeju	4	-		4 (100.0%)	0
Airport	34	34 (100.0%)	Imported cases (34)	-	11
<b>Total</b>	<b>8,897</b>	<b>7,201 (80.9%)</b>	Shincheonji 5,051 cases (56.8%)	1,696 (19.1%)	98

\* Not classified into a cluster or under investigation

※ The interim classification is based on the reporting location, which may change depending on further epidemiological investigation.



KCDC

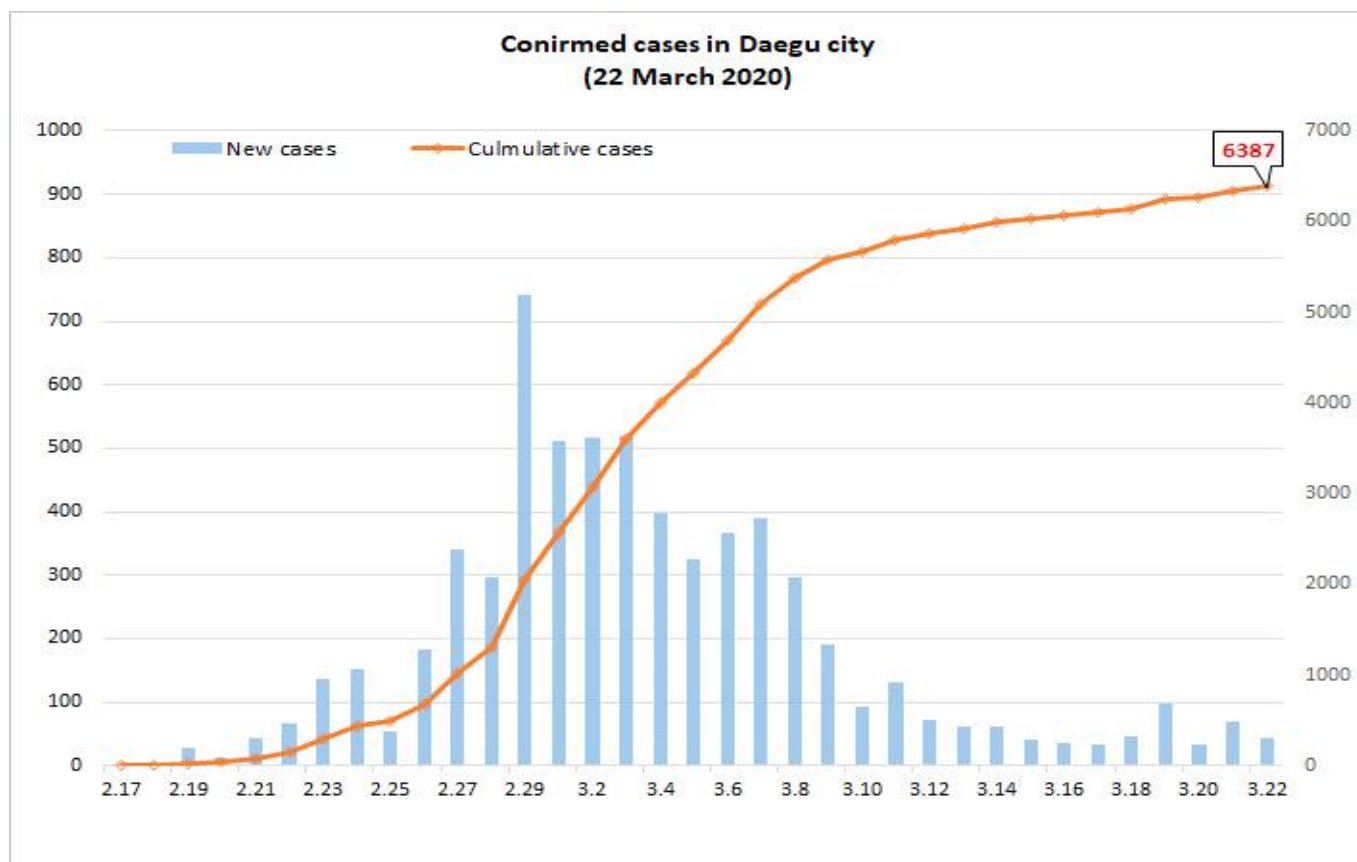
Korea Centers for Disease Control & Prevention

# The Updates of COVID-19 in Republic of Korea

As of 22 March, 2020

- All inbound travelers from Europe are tested effective of 0:00, 22 March. Furthermore, even if tested negative, Korean citizens and long-term stay foreigners should be under self-quarantine for 14 days, and short-term visitors should be under active monitoring.
- Anyone having respiratory symptoms at the point of entry or epidemiological links with confirmed cases will be quarantined for testing at quarantine station. The inbound travelers with no symptoms will stay at temporary support facilities by getting the result of test.
- In light of the continued emergence of outbreaks in religious group, and other facilities, the KCDC stresses the public to strictly comply with social distancing from 22 March to 5 April for 15 days before opening the school. The KCDC urged the public to stay at home excluding necessary reason like purchasing daily necessity, visiting at health facilities, and commuting.
- Korean government will restrict the operation of some facilities, such as religious facilities, indoor sports, and entertainment facilities which are at high risk of infection. Inevitably, when operating, it is necessary to strictly follow the guideline set by the KCDC, such as disinfection and ventilation, social distancing, and wearing a mask.

※ Confirmed cases by date, by region, by gender and age are shown in the following graph and tables.





KCDC

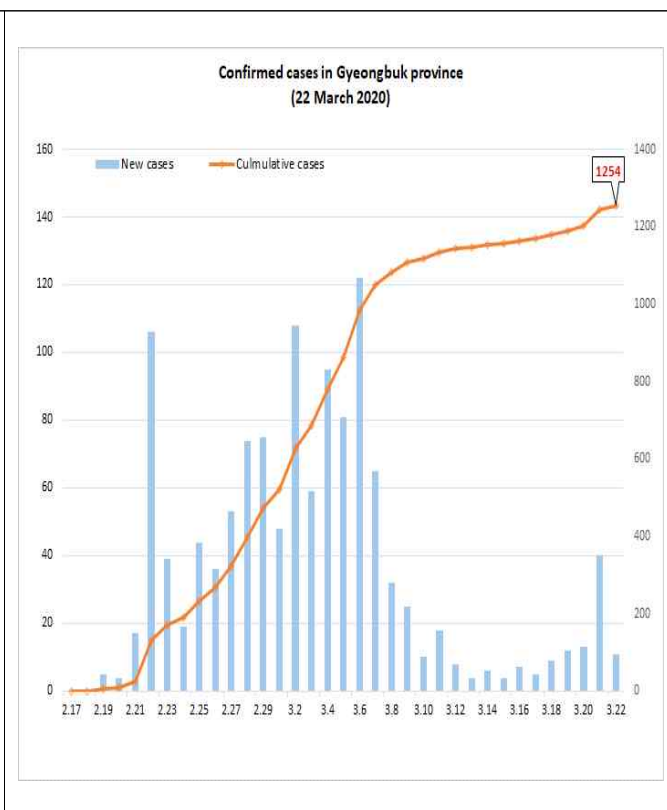
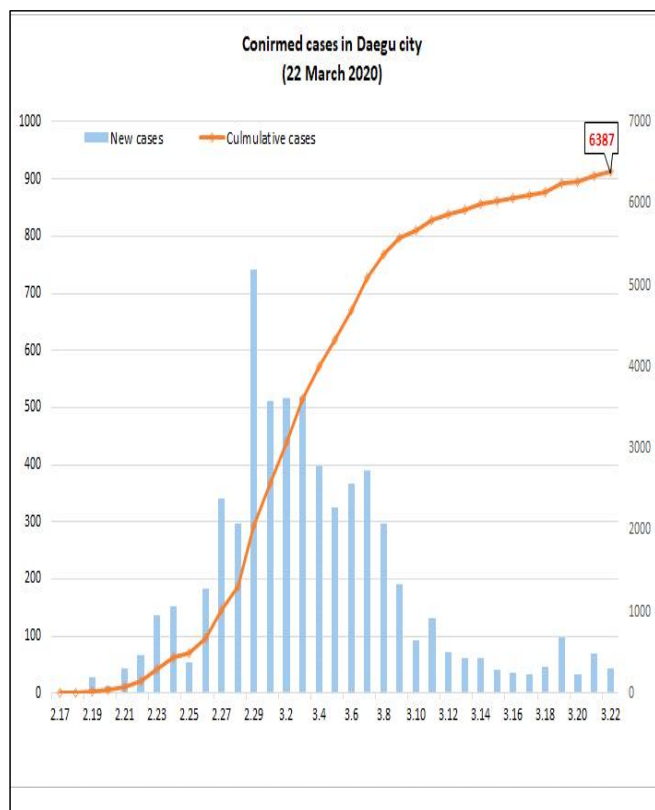
Korea Centers for Disease Control & Prevention

# The Updates of COVID-19 in Republic of Korea

As of 22 March, 2020

※ Cases distribution **by region:**

Region	# of cases	(%)	Incidence rate (per 0.1M)	Region	# of cases	(%)	Incidence rate (per 0.1M)
Seoul	324	(3.64)	3.33	Gyeonggi	337	(3.79)	2.54
Busan	108	(1.21)	3.17	Gangwon	30	(0.34)	1.95
Daegu	6,387	(71.79)	262.14	Chungbuk	35	(0.39)	2.19
Incheon	40	(0.45)	1.35	Chungnam	120	(1.35)	5.65
Gwangju	19	(0.21)	1.30	Jeonbuk	10	(0.11)	0.55
Daejeon	24	(0.27)	1.63	Jeonnam	6	(0.07)	0.32
Ulsan	36	(0.40)	3.14	Gyeongbuk	1,254	(14.09)	47.10
Sejong	41	(0.46)	11.98	Gyeongnam	88	(0.99)	2.62
Airport Screening	34	(0.38)	-	Jeju	4	(0.04)	0.60
<b>Total</b>				<b>8,897 (100) 17.16</b>			



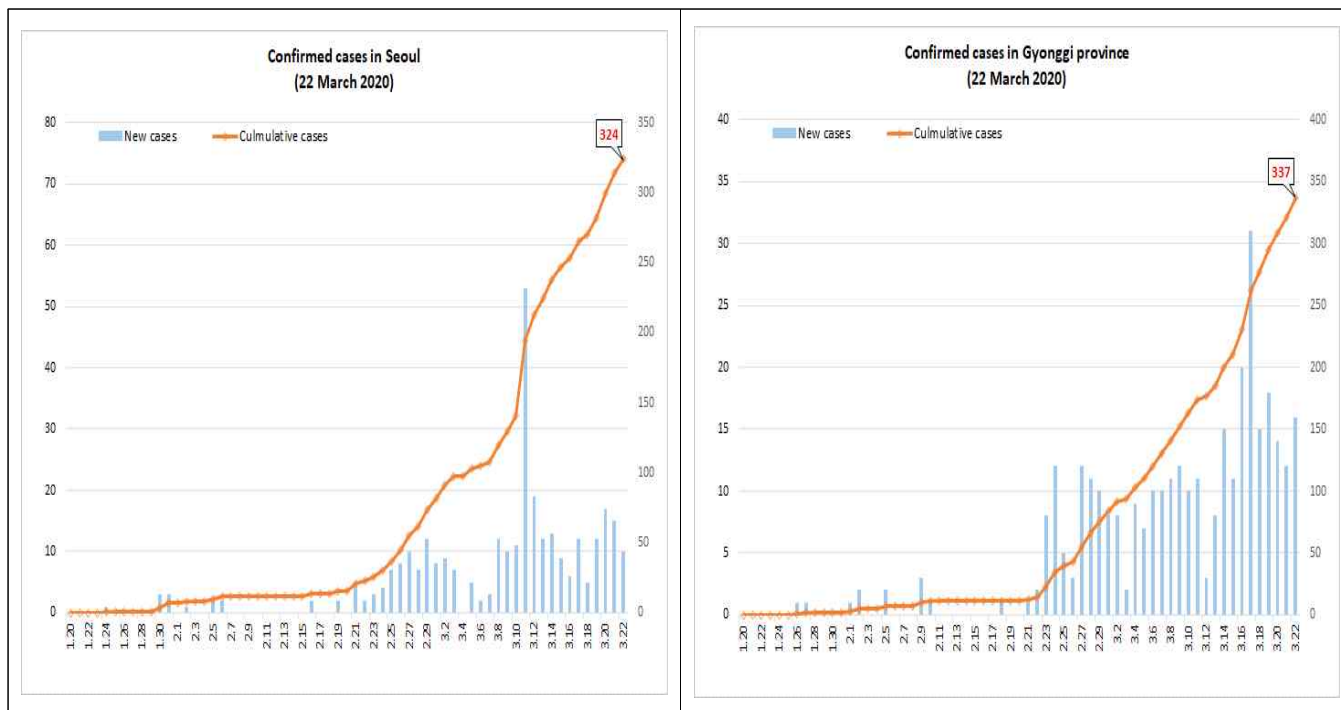


KCDC

Korea Centers for Disease Control & Prevention

# The Updates of COVID-19 in Republic of Korea

As of 22 March, 2020



※ Case distribution by gender and age:

Classification		Confirmed Cases (%)	Deaths (%)	Fatality rate (%)
Total		8,897 (100)	104 (100.0)	1.17
Sex	Male	3,430 (38.55)	55 (52.88)	1.60
	Female	5,467 (61.45)	49 (47.12)	0.90
Age	80 and above	392 (4.41)	41 (39.42)	10.46
	70-79	595 (6.69)	37 (35.58)	6.22
	60-69	1,132 (12.72)	17 (16.35)	1.50
	50-59	1,691 (19.01)	7 (6.73)	0.41
	40-49	1,221 (13.72)	1 (0.96)	0.08
	30-39	909 (10.22)	1 (0.96)	0.11
	20-29	2,396 (26.93)	0 (0.00)	-
	10-19	460 (5.17)	0 (0.00)	-
0-9	101 (1.14)	0 (0.00)	-	

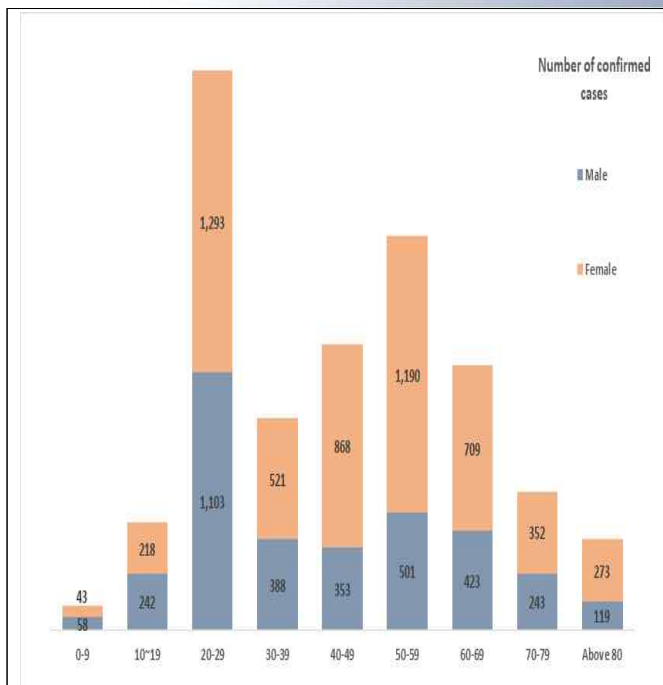


KCDC

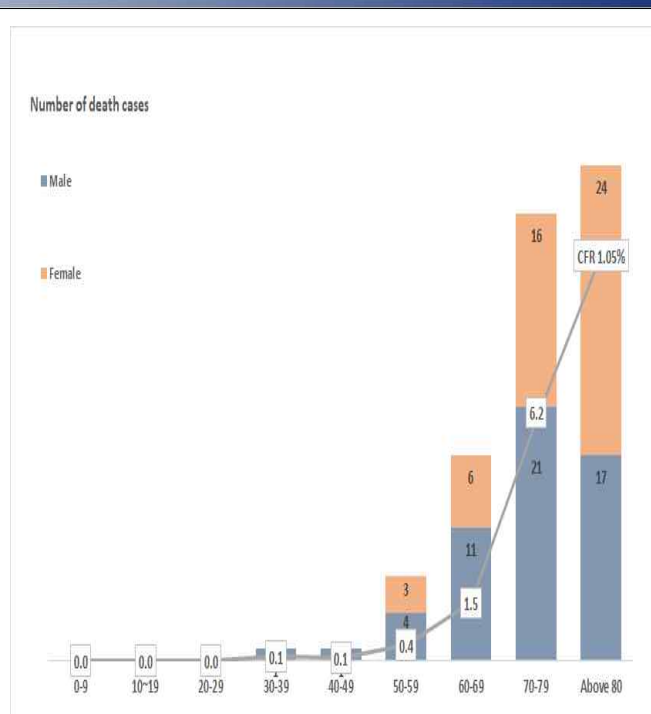
Korea Centers for Disease Control & Prevention

# The Updates of COVID-19 in Republic of Korea

As of 22 March, 2020



Age distribution of confirmed cases



Age distribution of deaths

※ **Imported cases** by world region

