



KCDC

Korea Centers for Disease Control & Prevention

Updates on COVID-19 in Republic of Korea

25 May 2020

- As of 0:00, 25 May 2020, the total number of confirmed cases is 11,206 (including 1,215 imported cases), of which 10,226 cases have been discharged from isolation. Newly confirmed cases are 16 in total.

[Table 1. Total reported/tested cases]

Period (since 3 Jan)	Total	Tested positive (PCR)				Testing in progress	Tested negative (PCR)
		Confirmed	Discharged from isolation	Under isolation	Deceased		
As of 0:00 24 May (Sun)	820,289	11,190	10,213	711	266	20,333	788,766
As of 0:00 25 May (Mon)	826,437	11,206	10,226	713	267	19,089	796,142
Difference	(+)6,148	(+)16	(+)13	(+)2	(+)1	(-),1,244	(+)7,376

[Table 2. Imported cases in Korea (as of 0:00, 25 May 2020)]

	Total	Region/Country						Where confirmed		Nationality	
		China	Asia ex-China	Europe	Americas	Africa	Australia	Point of Entry	Community	Korean	Other
New	3	0	2	0	1	0	0	1	2	3	0
Total	1,215	19 (1.6%)	202 (16.6%)	469 (38.6%)	516 (42.5%)	8 (0.7%)	1 (0.1%)	519 (42.7%)	696 (57.3%)	1,072 (88.2%)	143 (11.8%)

* Figures may change based on findings from ongoing local epidemiological investigation efforts.

- Of the 16 new cases, 3 were imported cases and 13 were locally transmitted cases.
 - Of the 3 imported cases, 1 is from America, 1 from UAE, and 1 from Kuwait.
- In Gangseo-gu, Seoul City, at an after-school private art studio, a teacher and a student (a kindergartener) were confirmed. Investigation on chain of transmission and testing of contacts are underway.
- Related to the biblical language study meeting, 1 additional case was confirmed at Jusarang Church in Uijeongbu City, Gyeonggi Province. The case, who attended the biblical language study meeting on 15 May, was under self-quarantine and confirmed via testing of the attendees of the meeting. In total, 8* cases have been confirmed related to this cluster to date. Epidemiological investigation and contact tracing are underway.
 - *1 from Grace Methodist Church (Yangcheon-gu, Seoul); 6 from Hwado Uri Church (Namyangju, Gyeonggi Province); 1 from Jusarang Church (Uijeongbu, Gyeonggi Province)
- Related to Elim Church in Gumi City, Gyeongbuk Province, 1 additional case was confirmed who was a merchant at Gumi Saemaoul Jungang Market (where the church was located). In total, 8* cases have been confirmed related to this cluster to date.
 - * 7 members of Elim Church (including the student at Daegu Meister High School for Agriculture and the student's family) and 1 merchant



KCDC

Korea Centers for Disease Control & Prevention

Updates on COVID-19 in Republic of Korea

25 May 2020

○ As of 12:00 today (25 May), 237 cases have been confirmed related to the nightclubs, including 7 cases of quinary transmission and 1 case of senary transmission.

- **(By region)** Seoul City=112, Gyeonggi Province=59, Incheon City=45, Chungbuk Province=9, Busan City=4, Gyeongnam Province=2, Jeonbuk Province=2, Daejeon City=1, Chungnam Province=1, Gangwon Province=1, Jeju Province=1
- **(By chain of transmission)** Club visitors=96; Contacts (family/acquaintance/coworkers/etc)=141
- **(By age group)** [0-18]=28; [19-29]=124; [30-39]=35; [40-49]=22; [50-59]=16; [60+]=12
- **(By sex)** male 183, female 54

○ In an effort to stop further local transmission of COVID-19 within communities as early as possible, KCDC will begin mass testing of persons who visited public venues and events visited by confirmed COVID-19 cases.

- There are 30 such facilities including 9 karaoke rooms and 7 bars (as of 10:00 today). Persons who visited such places during the respective specified time period are advised to visit a screening clinic and get tested regardless of symptoms. (Refer to Table 5 on the final page.)

* Newly added today: Daeyang Hot Springs Land, Bucheon City, Gyeonggi Province (17 May, 09:03-13:27; 20 May 11:06-12:41)

○ In response to recent reports of pediatric cases of inflammatory syndrome associated with COVID-19 in children and teens in Europe and the US, KCDC has decided to implement and operate a surveillance and investigation system for "Multisystem Inflammatory Syndrome in Children (MIS-C) associated with COVID-19" starting 25 May.

- To understand domestic situation regarding MIS-C and ensure timely response, KCDC has reviewed international cases of MIS-C and consulted with domestic expert advisors to establish a case definition and reporting procedures.

Case Definition

1. Children and adolescents under 19 years of age presenting with fever of 38°C or above lasting 24 hours or longer, with laboratory evidence of inflammation, with multisystem (2 or more) organ involvement, in severe clinical condition requiring hospitalization
2. No other pathogenic cause of inflammation found
3. Evidence of current or recent COVID-19 (SARS-CoV-2) infection, or history of COVID-19 exposure within 4 weeks prior to the onset of illness

* Must meet all three conditions above

- KCDC has requested related societies* to report cases of suspected MIS-C in outpatients or admitted or discharged inpatients to KCDC.

* The Korean Pediatric Society, The Korean Society of Pediatric Infectious Diseases, The Korean Society of Pediatric Critical Care Medicine, Korean Society of Kawasaki Disease, Korean Medical Association, Korean Hospital Association, etc.

○ In light of the upcoming opening of schools on 27 May (Wednesday) for high school grade 2 (11th grade), middle school grade 3 (9th grade), elementary school grades 1-2, and kindergarten students, KCDC requested students and school staff to closely follow the infectious disease prevention measures.



KCDC

Korea Centers for Disease
Control & Prevention

Updates on COVID-19 in Republic of Korea

25 May 2020

COVID-19 PREVENTION MEASURES IN SCHOOLS

- Do not go to school or work if having fever or respiratory symptoms
- Ventilate classrooms by opening windows
- Maintain constant distance between students
- Keep facemasks on at all times* while in school
 - *Exceptions allowed for meal times or health problems
- Maintain personal hygiene including hand washing and using hand sanitizers
- If having fever of 37.5 degrees or above or respiratory symptoms, immediately inform a health teacher and classroom teacher, put on an MFDS-approved facemask, and wait in a separate area
- Avoid karaoke rooms, PC cafes, bars, clubs, and other publicly used facilities

- If a confirmed case is found in a school, all students, teachers, and staff of the school will be instructed to put on an MFDS-approved facemask and return home. Local municipal government will conduct epidemiological investigation, disinfection, restriction of use of the affected facility, and other necessary infection control measures.

○ In light of the recent rise in local transmissions related to clubs, bars, karaoke rooms, and after-school private academies, KCDC urged people to refrain from social gathering or visiting any enclosed/confined/crowded spaces that are frequented by many people.

- People who cannot avoid visiting an enclosed/crowded space for an essential reason should carefully follow personal hygiene measures including keeping 2 meters of distance from other people, wearing a facemask, avoiding handshakes, washing hands, and not touching eyes, nose, or mouth with their hands.
- Persons belonging to high-risk groups (including elderly, pregnant women, persons with chronic illness) should especially avoid any poorly ventilated enclosed space frequented by many people. If such a situation cannot be avoided for an essential reason, it is highly important to wear a facemask.

○ Anyone who has come in close contact with a large number of unspecified persons in an enclosed/confined space such as clubs or bars need to be tested at a screening clinic through public health center or 1339 call center.

- KCDC urged people to visit a screening clinic and get tested especially if two or more persons within a household or social group develop COVID-19 suspected symptoms.

"5 Basic Infection Prevention Rules for Everyone"

- (1) Stay home for 3-4 days if you get sick.
- (2) Keep a distance of two arms' length between you and other people.
- (3) Wash your hands for 30 seconds. Cough/sneeze into your sleeve.
- (4) Ventilate your space at least twice a day and disinfect regularly.
- (5) Keep in touch with family and friends while maintaining physical distancing.



KCDC

Korea Centers for Disease Control & Prevention

Updates on COVID-19 in Republic of Korea

25 May 2020

[Table 3: Regional distribution and epidemiological links of the confirmed cases]

Region	Confirmed cases									Other major clusters
	Total	Imported cases	Clusters					Other*	New cases	
			Sub-total	Shin-cheonji	Other clusters	Contacts of confirmed cases	Imported cases			
Seoul	774	270	476	8	382	17	69	28	6	Itaewon clubs (111) , Guro-gu call center (98), Dong-an Church-PC Cafe (20), Manmin Central Church (41), etc.
Busan	144	27	88	12	57	18	1	29	0	Itaewon clubs (4), Onchun Church (39), Suyeong-gu Kindergarten (5), etc.
Daegu	6,874	25	6,120	4,510	682	924	4	731	1	Second Mi-Ju Hospital (196), Hansarang Convalescent Hospital (128), Daesil Convalescent Hospital (100), Fatima Hospital (37), etc.
Incheon	144	47	92	2	77	6	7	5	1	Itaewon clubs (43) , Guro-gu call center (20), etc.
Gwangju	30	14	16	9	0	1	6	0	0	
Daejeon	45	14	22	2	12	8	0	9	0	Korea Forest Engineer Institute (3), etc.
Ulsan	50	19	24	16	2	3	3	7	0	
Sejong	47	4	42	1	38	3	0	1	0	Ministry of Oceans and Fisheries (30), gym facilities (8)
Gyeonggi	766	181	537	29	394	52	62	48	6	Itaewon clubs (58) , biblical language study meeting (7), Grace River Church in Seongnam (72), Guro-gu call center-Bucheon SaengMyeongSu Church (48), Uijeongbu St. Mary's Hospital (50), etc.
Gangwon	56	16	33	17	16	0	0	7	0	Apartments in Wonju City (3), Uijeongbu St. Mary's Hospital (10), etc.
Chungbuk	59	8	42	6	27	7	2	9	0	Itaewon clubs (9), Goesan-gun Jangyeon-myeon (11), etc.
Chungnam	145	13	122	0	120	1	1	10	0	Gym facilities in Cheonan (103), research center in Seosan (9), etc.
Jeonbuk	21	10	6	1	5	0	0	5	0	Itaewon clubs (2)
Jeonnam	18	10	5	1	1	2	1	3	0	
Gyeongbuk	1,377	13	12,32	566	475	191	0	132	1	Gumi Elim Church (8) , Cheongdo Daenam Hospital (120), Bonghwa Pureun Nursing Home (68), pilgrimage to Israel (49), Gyeongsan Seo Convalescent Hospital (66), Yecheon-gun (41), etc.
Gyeongnam	123	17	87	32	48	6	1	19	0	Itaewon clubs (2), Geochang Church (10), Geochang Woongyang-myeon (8), Wings Tower (10), etc.
Jeju	14	8	2	0	1	0	1	4	0	
Airport	519	519	0	0	0	0	0	0	1	
Total	11,206 (%)	1,215 (10.8)	8,946 (79.8)	5,212 (46.5)	2,337 (20.9)	1,239 (11.1)	158 (1.4)	1,047 (9.3)	16	

* Not classified into a cluster or under investigation

※ The interim classification is based on the reporting location, which may change depending on further epidemiological investigation.



KCDC

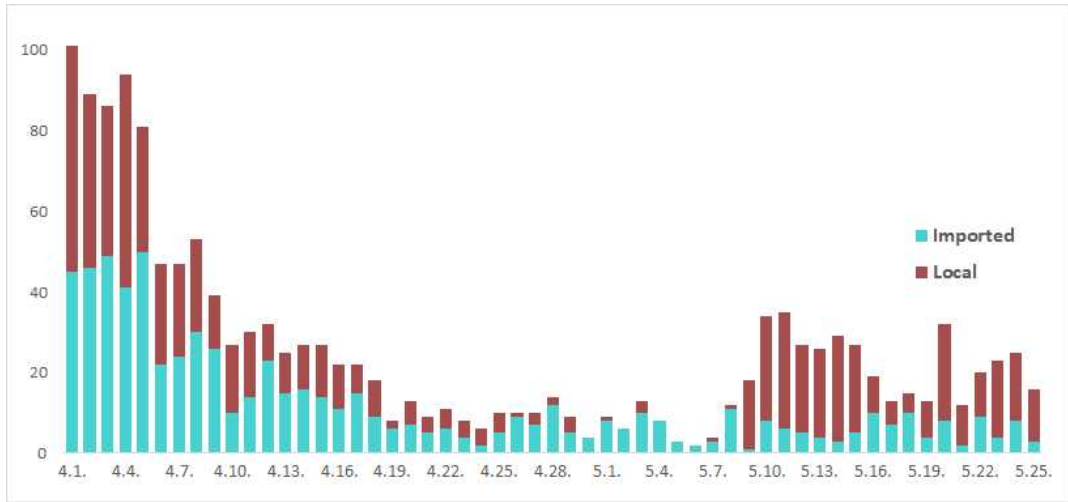
Korea Centers for Disease Control & Prevention

Updates on COVID-19 in Republic of Korea

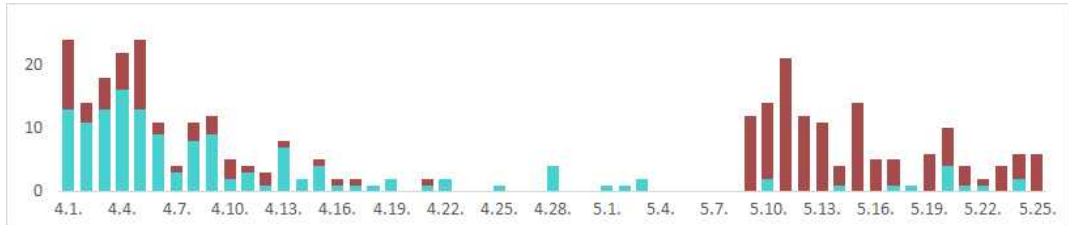
25 May 2020

[Figure 1: Daily new confirmed cases by chain of transmission]

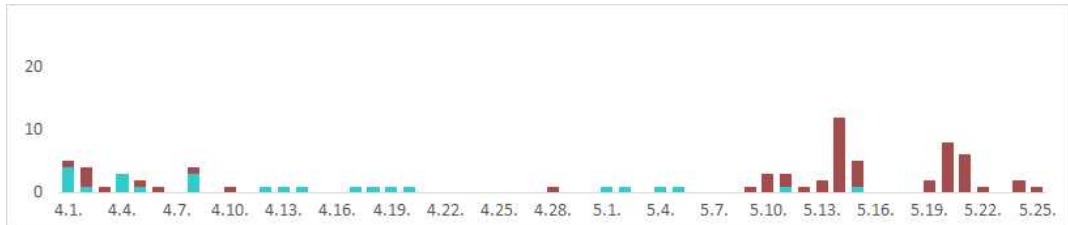
TOTAL



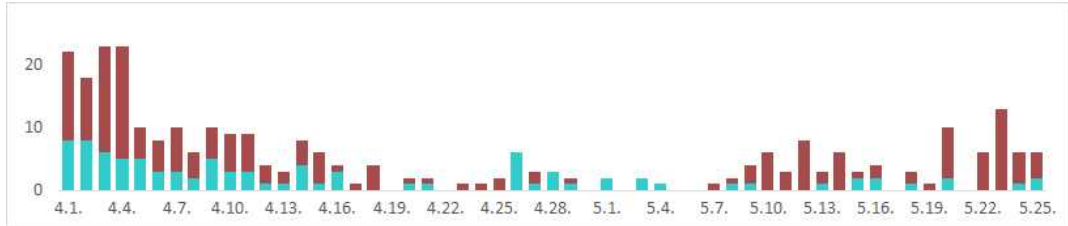
Seoul City



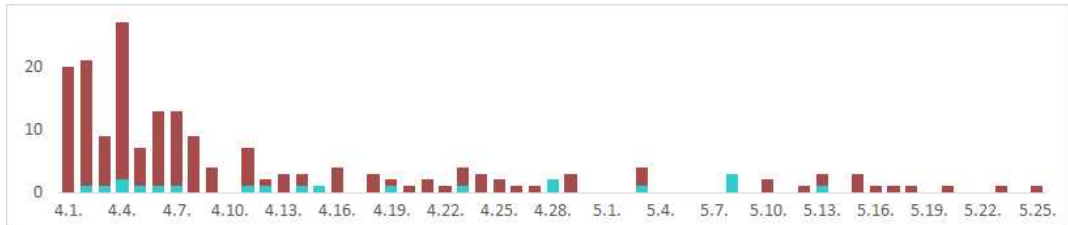
Incheon City



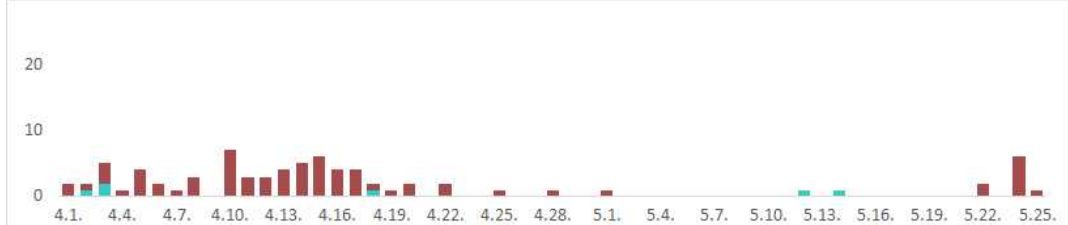
Gyeonggi Province



Daegu City



Gyeongbuk Province





KCDC

Korea Centers for Disease Control & Prevention

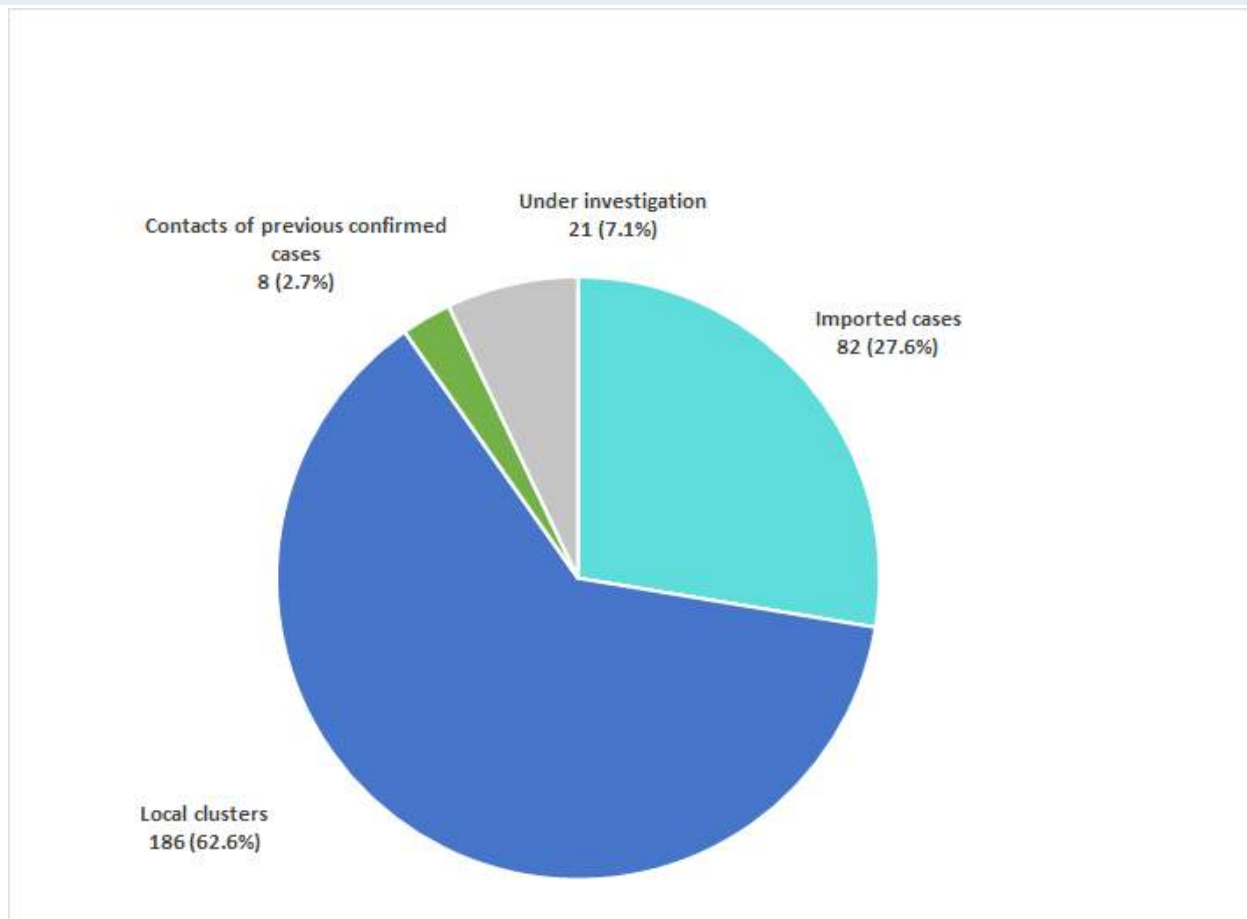
Updates on COVID-19 in Republic of Korea

25 May 2020

[Table 4: Age distribution of severe cases]

Age group	Total	Severe (%)	Very severe (%)
Total	13	5 (100.0)	8 (100.0)
80 and above	5	2 (40.0)	3 (37.5)
70-79	3	1 (20.0)	2 (25.0)
60-69	2	1 (20.0)	1 (12.5)
50-59	1	1 (20.0)	0 (0.0)
40-49	2	0 (0.0)	2 (25.0)
30-39	0	0 (0.0)	0 (0.0)
20-29	0	0 (0.0)	0 (0.0)
10-19	0	0 (0.0)	0 (0.0)
0-9	0	0 (0.0)	0 (0.0)

[Figure 2: New cases (for last 2 weeks) by chain of transmission]





KCDC

Korea Centers for Disease Control & Prevention

Updates on COVID-19 in Republic of Korea

25 May 2020

[Table 5: Public venues visited by confirmed COVID-19 cases]

Region	Type	Name and address	Date		Time
Seoul	Singing room	Gawang Coin Karaoke (Seoul Nowon-gu Dobong-ro 468 Hongik Building)	5/7	21:37~22:10	-
Seoul	Singing room	Byeolbyeol Coin Karaoke (Seoul Gwangak-gu Gwangak-ro 200)	5/4	20:35~21:19	-
Seoul	Singing room	Rock-Q Coin Karaoke (Seoul Mapo-gu Hongik-ro-6-gil 10)	5/6	15:23~16:16	-
			5/7	19:00~19:20	-
Seoul	Amusement facility	1943 Hongik Univ. Branch (Seoul Mapo-gu Jandari-ro 8-6)	5/7	19:30~21:30	17:00~05:00
		Hansin Pocha (Seoul Mapo-gu Jandari-ro 13)	5/7	21:50~23:20	17:00~07:00
Seoul	Amusement facility	Holics (Seoul Seocho-gu Seochodaero-77-gil 24)	5/9	20:00~00:11	16:00~06:00
Seoul	Singing room	SBS Singing Room (Seoul Seocho-gu Seochodaero-77-gil 31)	5/9	00:36~01:36	-
Seoul	Amusement facility	Akbari (Seoul Seocho-gu Seochodaero-77-gil 39)	5/10	01:50~03:42	-
Seoul	Restaurant	Illu Duck (Seoul Seongdong-gu Seongsuilro-8-gil 40)	5/11~5/21		11:00~23:00
Seoul	Other	Biblical Language Studies (Grace Methodist Church / Hwado Uri Church / Uijeongbu Jusarang Church: Uijeongbu-si Taepyeong-ro 212)	5/8, 5/15		-
Seoul	Amusement facility	Byeolbam Pocha (Seoul Yongsan-gu Hangangdaero-87-gil 7)	5/4	19:50~22:30	-
Daegu	Singing room	Ban Ban Coin Karaoke (Gongi ban sori ban) (Daegu Dalseo-gu Gyedaedongmun-ro 2, B1)	5/11	23:28~24:3	10:00~05:00
Daegu	Singing room	Tongtong Coin Singing Room (Daegu Jung-gu Dongseongro-2-gil 45)	5/12	17:40~17:55	11:00~01:00
Daegu	Cafe	Asura Balbalta (board game cafe) (Daegu Jung-gu Dongseongro-5-gil 53)	5/18	17:38~19:44	24시간
Daegu	Cafe	Golbang (comic book cafe) (Daegu Jung-gu Dongseongro-5-gil 53)	5/17	18:45~19:55	10:00~01:00
Daegu	Singing room	Rock-Q Coin Karaoke (Dongseongro No 2 Branch) (Daegu Jung-gu Dongseongro-6-gil 42)	5/18	21:00~21:37	11:00~06:00
Incheon	PC cafe	Jin PC Room (Incheon Michuhol-gu Dokbae-ro 311 Vision Plaza)	5/6	15:16~19:26	-
Incheon	Singing room	Top Coin Singing Room (Incheon Michuhol-gu Dokbae-ro 311 Vision Plaza)	5/6	20:00~21:00	-
Gyeonggi	Other	Fiesta 9 (Gyeonggi Gooyang-si Ilsanseo-gu Ilhyeong-ro 97-11 Ilsan Doosan We've The Zenith Square B2)	5/16	13:00	11:30~21:00
Gyeonggi	Other	Laon Party House (Gyeonggi Bucheon-si Buil-ro 223 B1)	5/9, 5/10, 5/17		11:30~19:00
Gyeonggi	Other	MERIT Night Club (Gyeonggi Bucheon-si Gilju-ro 125)	5/9~5/10	23:48~00:34	20:00~05:00
Gyeonggi	Amusement facility	Baobap (Bucheon Sangdong Branch) (Gyeonggi Bucheon-si Songnaedaero-2650-beongil 59)	5/10	00:44~02:03	15:00~05:00
Gyeonggi	Singing room	Junco Music Town (Bucheon Sangdong Branch) (Gyeonggi Bucheon-si Giljuro 121-beongil 18-3)	5/10	02:09~03:55	18:00~09:00
Gyeonggi	Amusement facility	Jakuwa (Gyeonggi Anyang-si Manan-gu Jangnaero 1430-beongil 15)	5/14	18:00~23:30	17:00~08:00
			5/15	19:00~23:40	
			5/17	18:00~22:00	
Gyeonggi	Other	Music Home Orchestra (Gyeonggi Yongin-si Giheung-gu Guseong-ro 357 Bldg B Floor 2)	5/19		-
Gyeongbuk	Other	Saemaeul Jungang Market 91st stand (selling cheonggukjang) (Gyeongbuk Gumi-si Gumijungangro-9-gil 11)	5/18~5/22		07:00~18:00
Gyeongbuk	Other	Saemaeul Jungang Market 42nd stand (selling vegetables) (Gyeongbuk Gumi-si Gumijungangro-9-gil 11)	5/18~5/22		07:00~18:00
Gyeonggi	Bath house	Daeyang Hot Springs Land (Gyeonggi-do Bucheon-si Gilju-ro 115)	5/17	09:03~13:47	-
			5/20	11:06~12:41	