



gouvernement.lu

The Luxembourg Government Coronavirus  Menu main  Search

EN

FR

DE

EN

LU

[Official communications](#)

[Citizens](#)

[Companies & cross-border workers](#)

[Medical professionals](#)

[Media centre](#)

Search



Coronavirus - Official communications // Luxembourg



HOTLINE

Hotline (citizens/companies)

8002 8080

A psychological support service is available 7 days a week, from 7:00 to 23:00.

Hotline from abroad:

+352 49 77 1 9200

Education

8002 9090

Short-time working

8002 9191

Online sales for vulnerable people

8002 9292

Housing subsidies

8002 1010

Situation update

(05.05.2020)

Current situation COVID-19: New infections, hospitalisations in intensive care, deaths.



3.840 People tested positive for COVID-19

49.299 Persons tested since the beginning of the crisis

96* Deaths

111* Hospitalizations (COVID-19 and suspected cases)

Next update: **06.05.2020 between 17:30 - 18:00**

Information and recommendations by domain

- › [ADEM – Job Agency](#)
- › [Agriculture and viticulture](#)
- › [Chamber of Commerce](#)
- › [Chamber of Trades](#)
- › [Citizens](#)
- › [Companies & Frontier workers](#)
- › [Cultural Sector](#)
- › [Education \(Schouldoheem\)](#)
- › [Food safety](#)
- › [Home workout \(AktivDoheem\)](#)
- › [Housing \(FAQ\)](#)
- › [Individual protective equipment](#)
- › [Leave for family reasons](#)
- › [Medical Teleconsultation](#)
- › [Mental Health](#)
- › [Municipalities](#)
- › [National sanitary reserve \(FAQ\)](#)
- › [Public transport - mobility](#)
- › [Short-time work due to force majeure](#)

News

COVID-19: Venues for the celebration of marriages and civil partnerships

- › [05.05.2020](#)

Additional adaptations in public transport from 4 May 2020

- › [04.05.2020](#)

Our intangible heritage goes digital: Digital IKI - Digital Octave

- › [29.04.2020](#)

A deconfinement strategy framed by health and research measures

› 28.04.2020

National call for COVID-19 research projects open to public and private partnerships

› 28.04.2020

New emergency allowances for micro and small businesses

› 22.04.2020

Prime Minister's first exchange with the ad hoc group to accompany the measures decided as part of the fight against COVID-19

› 20.04.2020

www.EPI-Covid19.lu: An Internet platform connecting individual protective equipment supply and demand

› 18.04.2020

A gradual resumption of courses and classes organised in alternating sessions starting on 4 May 2020

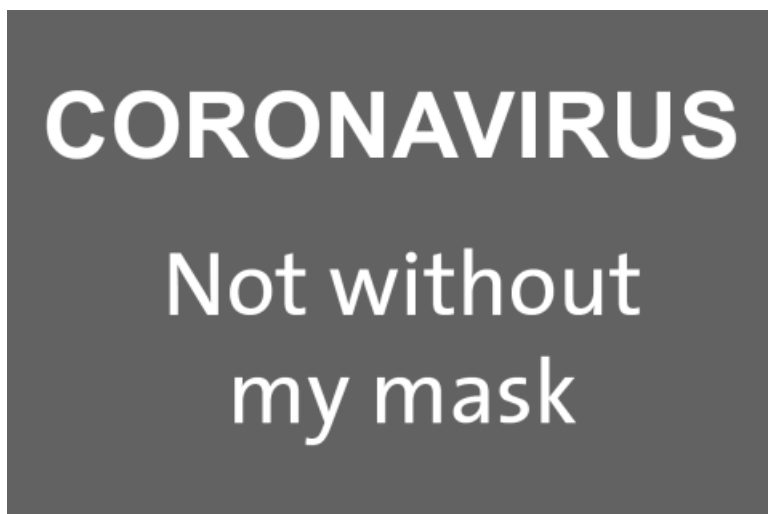
› 16.04.2020

Protective measures in the context of COVID-19 in public transport as of 20 April 2020

› 16.04.2020

ALL OF THE NEWS

Information about masks



FAQ - Citizen

CORONAVIRUS

FAQ - frequently asked questions

Health at Work

CORONAVIRUS

Health at Work

Call for volunteers

CORONAVIRUS

Call for volunteers

The Ministry on Twitter

GouvernementLU a retweeté



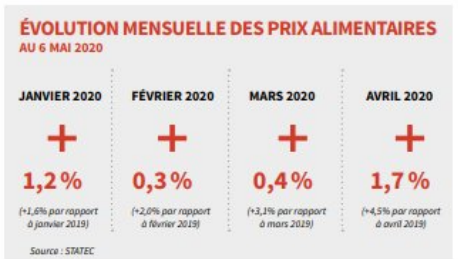
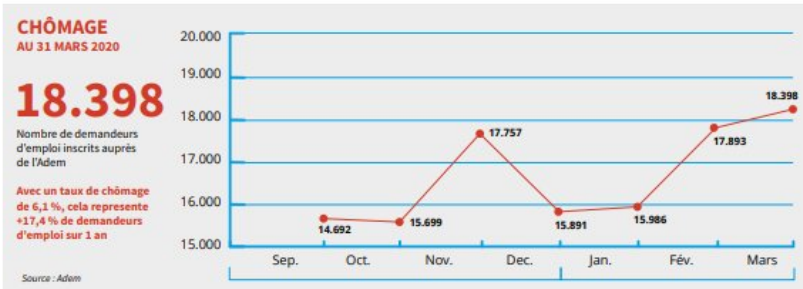
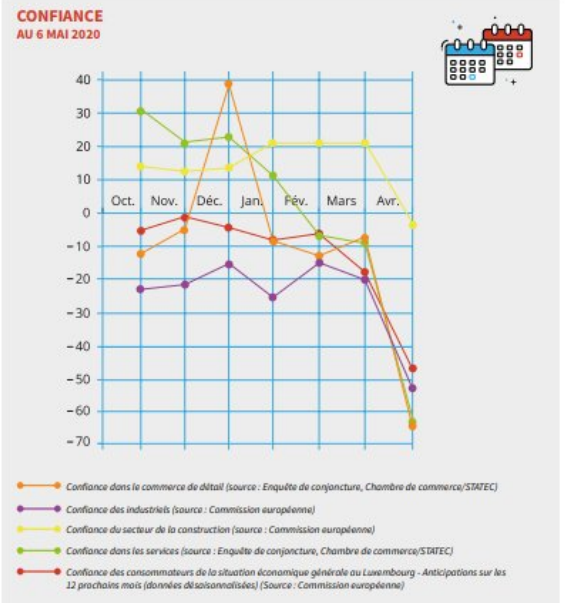
Franz Fayot

@FranzFayot -

06/05/2020 13:23

Mise à jour du tableau de bord #COVID19 meco.gouvernement.lu/dam-assets/dos...

CORONAVIRUS COVID-19 // TABLEAU DE BORD



GouvernementLU a retweeté

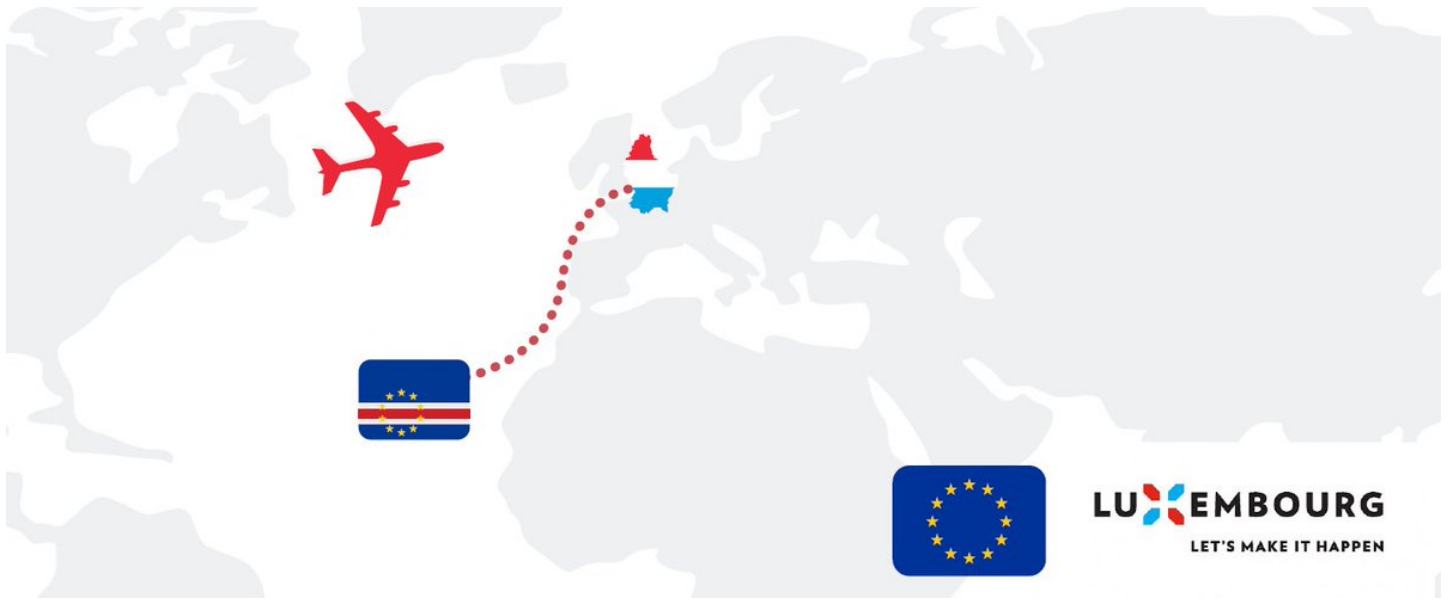


MFA Luxembourg

@MFA_Lu -

06/05/2020 11:53

.@MFA_lu a organisé un 2ème vol spécial de rapatriement du au par le biais du mécanisme civil 🇱🇺🇱🇺🇱🇺🇱🇺. 170 personnes ont pu être rapatriées : 75 citoyens/résidents , 25 , 12 , 11 , 10 , 9 , 8 , 5 , 3 , 4 , 3 , 2 , 2 , 1 . #Solidarité 🇱🇺🇱🇺🇱🇺🇱🇺



GouvernementLU

@gouv_lu -

05/05/2020 16:55

Pressekonferenz vum 5. Mee iwwert d'Reprise vun de Coursen an dem Accueil an der Grondschougouvernement.lu/lb/actualites/...

FOLLOW US ON
TWITTER

Sections

Official communications

Citizens

Companies & cross-border workers

Medical professionals

Media centre

Forms

Support

Contact

Sitemap

About this site

General Legal Notice

Stay informed

Twitter

Facebook

RSS

Newsletter



—