



gouvernement.lu

The Luxembourg Government Coronavirus  Menu main  Search
GOUV_CORONAVIRUS

[FR](#)

[DE](#)

[EN](#)

[LU](#)

[Official communications](#)

[Citizens](#)

[Companies & cross-border workers](#)

[Medical professionals](#)

[Media centre](#)

Search



Coronavirus - Official communications // Luxembourg

[> f](#)

[> t](#)

HOTLINE

Hotline (citizens/companies)

8002 8080

Available from Monday to Friday, from 8:00 to 16:00.

Hotline from abroad:

+352 49 77 1 9200

Education

8002 9090

Short-time working

8002 9191

Online sales for vulnerable people

8002 9292

Housing subsidies

8002 1010

Helpline - Domestic violence

2060 1060

Situation update

(05.06.2020)

Current situation COVID-19: New infections, hospitalisations in intensive care, deaths.



4.032 People tested positive for COVID-19

83.673 Persons tested since the beginning of the crisis

110 Deaths

31 Hospitalizations (COVID-19 and suspected cases)

0,520 Reproduction rate R_{t_eff}

Next update: **06.06.2020 between 17:30 - 18:00**

Information and recommendations by domain

- › [ADEM – Job Agency](#)
- › [Agriculture and viticulture](#)
- › [Chamber of Commerce](#)
- › [Chamber of Trades](#)
- › [Citizens](#)
- › [Companies & Frontier workers](#)
- › [Cultural Sector](#)
- › [Education \(Schouldoheem\)](#)
- › [Food safety](#)
- › [Home workout \(AktivDoheem\)](#)
- › [Housing \(FAQ\)](#)
- › [Individual protective equipment](#)
- › [Leave for family reasons](#)
- › [Medical Teleconsultation](#)
- › [Mental Health](#)
- › [Municipalities](#)
- › [National sanitary reserve \(FAQ\)](#)
- › [Public transport - mobility](#)
- › [Short-time work due to force majeure](#)

News

Permanent closure of the Advanced care centres

› 05.06.2020

Our intangible cultural heritage goes digital: Digital IKI - Digital Hopping Procession

› 29.05.2020

Additional adaptations in public transport from 25 May 2020

› 22.05.2020

New non-repayable allowance for the self-employed

› 06.05.2020

COVID-19: Venues for the celebration of marriages and civil partnerships

› 05.05.2020

Our intangible heritage goes digital: Digital IKI - Digital Octave

› 29.04.2020

A deconfinement strategy framed by health and research measures

› 28.04.2020

National call for COVID-19 research projects open to public and private partnerships

› 28.04.2020

New emergency allowances for micro and small businesses

› 22.04.2020

Prime Minister's first exchange with the ad hoc group to accompany the measures decided as part of the fight against COVID-19

› 20.04.2020

ALL OF THE NEWS

Information about masks

Not without
my mask



NEISTART LËTZEBUERG

✓ LIEWENSQUALITÉIT ✓ SOLIDARITÉIT ✓ STABILITÉIT

RECOVERY PLAN

Forms

Forms

Health at Work

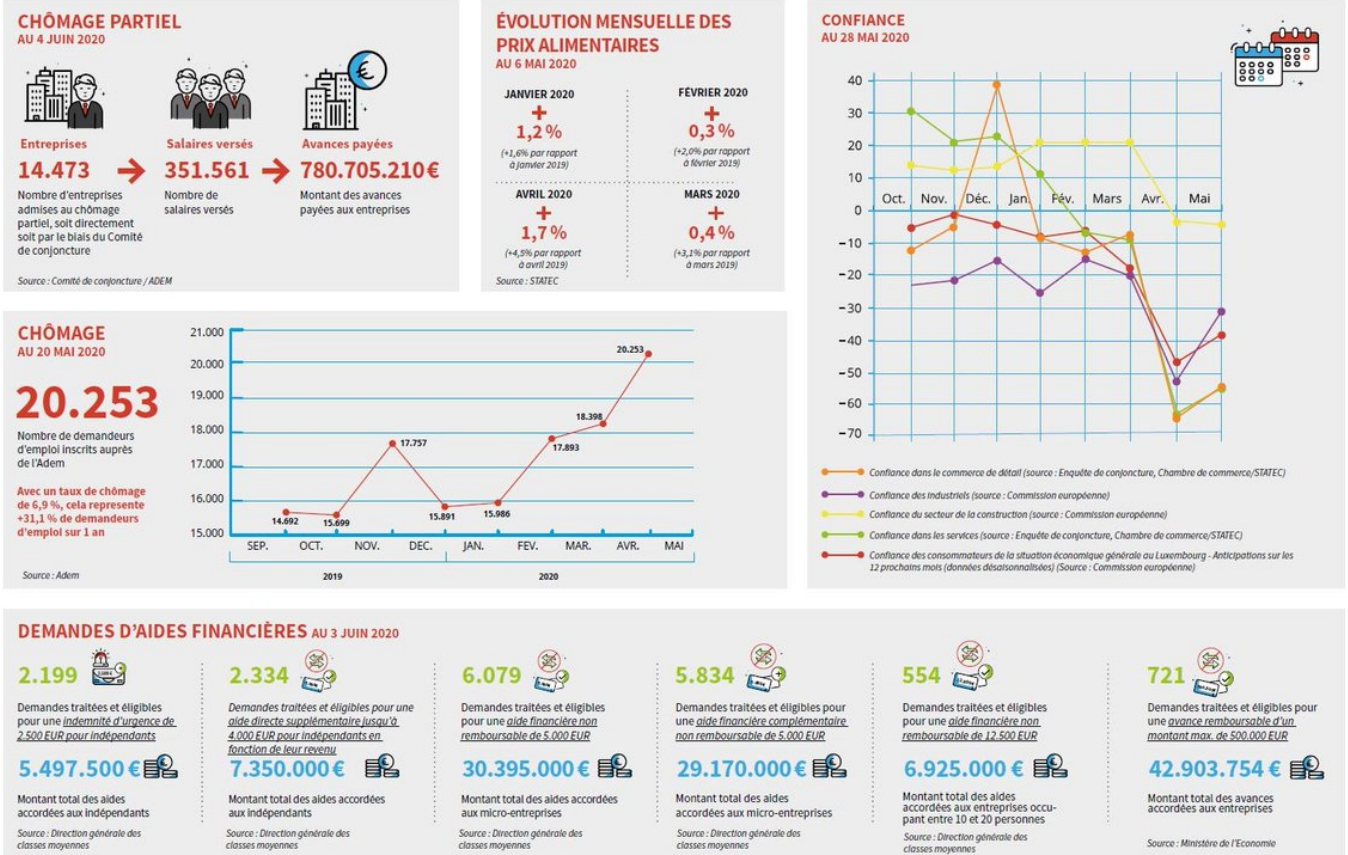
Health at Work

The Ministry on Twitter

GouvernementLU a retweeté



CORONAVIRUS COVID-19 // TABLEAU DE BORD



GouvernementLU a retweeted

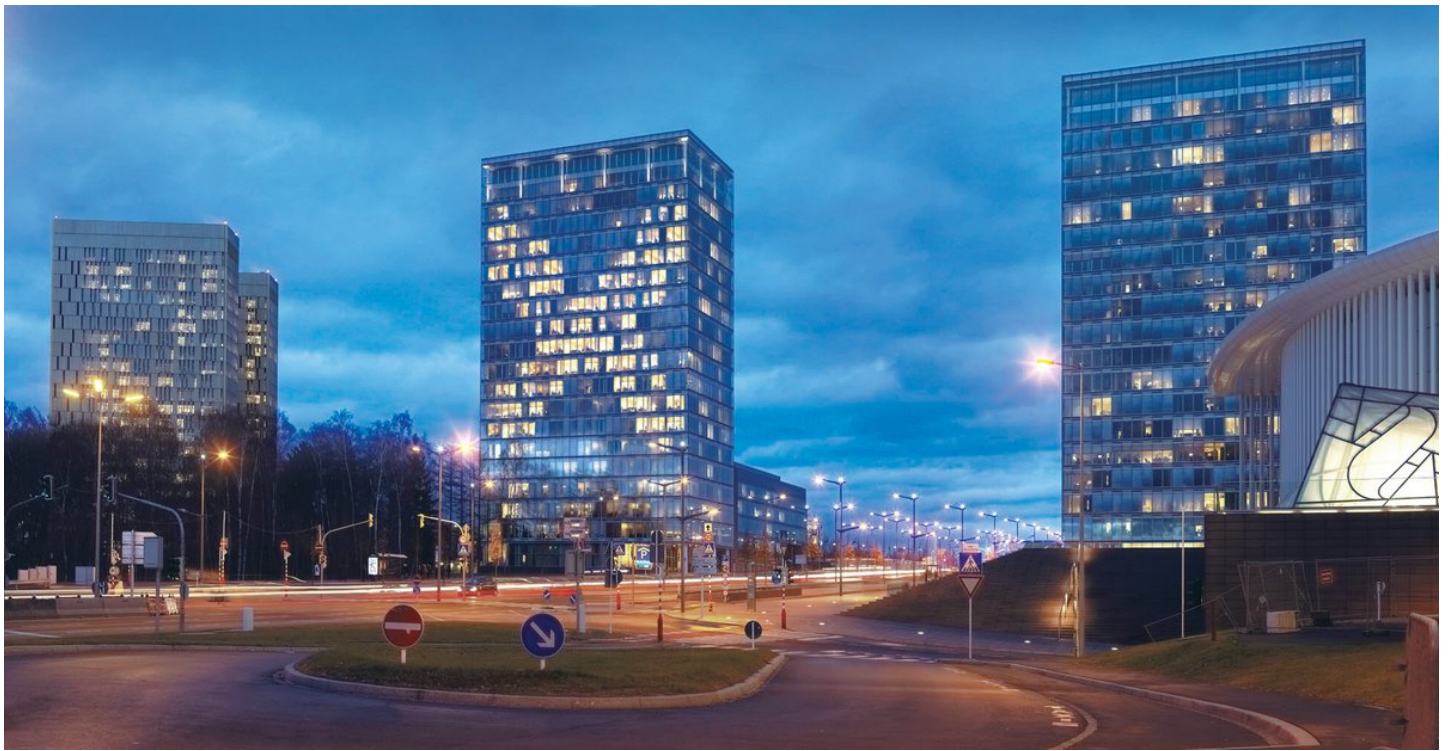


Pierre Gramagna

@pierregramagna -

04/06/2020 14:55

I congratulate @EU_Commission & @EU_Budget for the 1st bond issuance under #Luxembourg law through the new #DebtIssuanceProgramme. This represents another clear confirmation of LU's capital markets expertise & underlines the country's role as a leading European financial centre.



GouvernementLU a retweeté



Ministère de la Justice

@MinJus_Lu -

04/06/2020 13:23

.@SamTanson a participé à la réunion du Conseil JAI des ministres de la Justice de l'Union européenne. @EU2020HR @RPUE_LU

@dreynders #JHAcouncil #COVID19



FOLLOW US ON
TWITTER

[Sections](#)

[Official communications](#)

[Citizens](#)

[Companies & cross-border workers](#)

[Medical professionals](#)

[Media centre](#)

[Not without my mask](#)

[Forms](#)

[Neistart Lëtzebuerg](#)

[Support](#)

[Contact](#)

[Sitemap](#)

[About this site](#)

[General Legal Notice](#)

[Stay informed](#)

[Twitter](#)

[Facebook](#)

[RSS](#)

[Newsletter](#)

