

EN

FR

DE

EN

LU

News

The Government

Ministries

Departments

Topics

Political system

Search



## Coronavirus: COVID-19

> 

> 

> 

HOTLINE: 8002 8080

### **Situation update (18.03.2020):**

203 confirmed cases

2 deaths

## WHAT IS CORONAVIRUS?

Definition of Coronavirus

Where did the new coronavirus appear?

What is a pandemic?

# SYMPTOMS

What are the symptoms?

Can a blood test detect the presence of the virus?

Can my personal physician prescribe a laboratory test to identify the SARS-CoV-2-virus?

If I am suspected of being infected with COVID-19 and a test was executed, who receives the result of the test?

# TRANSMISSION AND TREATMENT

How is COVID-19 coronavirus spread?

Can I be contaminated by a package ?

Is COVID-19 transmissible during sexual intercourse?

Does the new coronavirus pose a threat to pregnant women or fetuses?

How should I behave in order to have as little exposition as possible? ?

Is there a vaccine against COVID-19?

What treatment exists for COVID-19 infection?

How can I see my regular doctor?

How do medical centres operate in the context of the coronavirus?

# PROTECTION

What should I do to protect myself and to avoid being contaminated?

Who is considered vulnerable

I am a vulnerable person, what should I do?

For immunosuppressed people, is the wearing of a mask recommended to protect against the a coronavirus infection?

When to wear a mask?

What does an isolation measure mean?

What does an auto-quarantine measure mean?

What does an auto-isolation measure mean?

What does an auto-monitoring measure mean?

What happens if the virus' spread cannot be contained by confinement measures?

Can I still visit elderly people in a care facility?

Which protective measures are taken in hospital facilities?

# HOW IS LUXEMBOURG PREPARING?

A preparation at various levels

What does the High Commission for National Protection do?

What is the composition of the crisis unit?

What are the missions of the crisis unit?

What is the role of the Ministry of Health and the Health Directorate?

Are our hospitals and health services prepared to accommodate many patients?

Why has the government decided to limit or forbid certain activities, visits, events and others?

Which commercial activities continue to be available?

Are administrations and public institutions impacted by these restrictions?

Which essential activities for society are maintained?

Which activities have been cancelled?

## TRAVEL INFO

Why are there no more any risk zones?

What are the recommendations to follow when travelling?

Can adults returning from a trip abroad (private or professional), resume their professional activity?

## INFORMATION AND RECOMMENDATIONS FOR BUSINESSES AND FRONTIER WORKERS

It is recommended that companies should make maximum use of home office as far as possible and reduce their activities to those tasks which are essential for the functioning of the company.

For information and recommendations for Businesses and frontier workers please select the following [Link](#)

## INFORMATION AND RECOMMENDATIONS FOR EDUCATION

For information and recommendation concerning school and music education please select the following [link](#).

## INFORMATION CONCERNING FAMILY LEAVE

For information concerning family leave, please follow [this link](#). (in French)

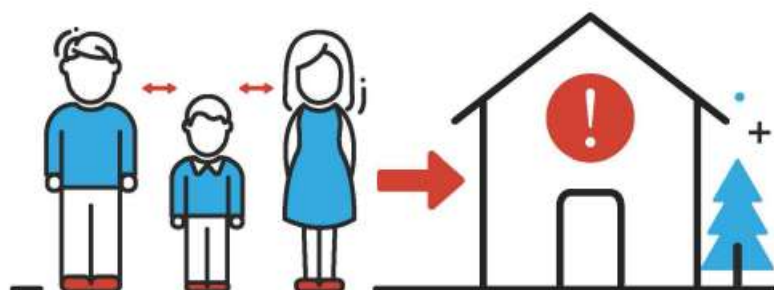
For all other questions related to COVID-2019, please consult the websites of the Ministry of Health [www.sante.lu/coronavirus](http://www.sante.lu/coronavirus), the European Center for Disease Prevention and Control (ECDC) [www.ecdc.eu](http://www.ecdc.eu) or the World Health Organization (WHO) [www.who.int](http://www.who.int).

Medical Centres

**MAISONS MÉDICALES**  
**INFORMATIONS**

#BLEIFTDOHEEM

©Ministère de la Santé



PLEASE STAY AT HOME.

**#BLEIFTDOHEEM**

RESTEZ À LA MAISON.



LE GOUVERNEMENT  
DU GRAND-DUCHÉ DE LUXEMBOURG

Health professionals

**DOCUMENTS  
COVID-19**

# Precautionary measures for vulnerable people

©Ministère de la Santé

## CORONAVIRUS COVID-19 INFORMATIONS ET DIRECTIVES

### MESURES PROTECTRICES POUR POPULATIONS À RISQUE

#### QUI SONT LES PERSONNES VULNÉRABLES ?



Les personnes  
de plus de 65 ans.



Les personnes souffrant des maladies :

- Le diabète
- Les maladies cardio-vasculaires
- Les maladies chroniques des voies respiratoires
- Le cancer
- Une faiblesse immunitaire due à une maladie ou à une thérapie.

#### LES RECOMMANDATIONS SUIVANTES S'APPLIQUENT POUR LES PERSONNES VULNÉRABLES :



Effectuez les courses  
en dehors des heures  
de pointe, si possible.



Évitez les événements de masse  
et les lieux rassemblant, en  
milieu confiné, un nombre élevé  
de personnes et où il n'est pas  
possible de maintenir une distance  
de sécurité de 1 à 2 mètres.



Reportez les voyages  
non nécessaires.



Évitez les transports publics  
autant que possible.

POUR SE RENSEIGNER :  
[gouvernement.lu/coronavirus](https://gouvernement.lu/coronavirus)  
8002 - 8080

EN CAS D'URGENCE :  
112



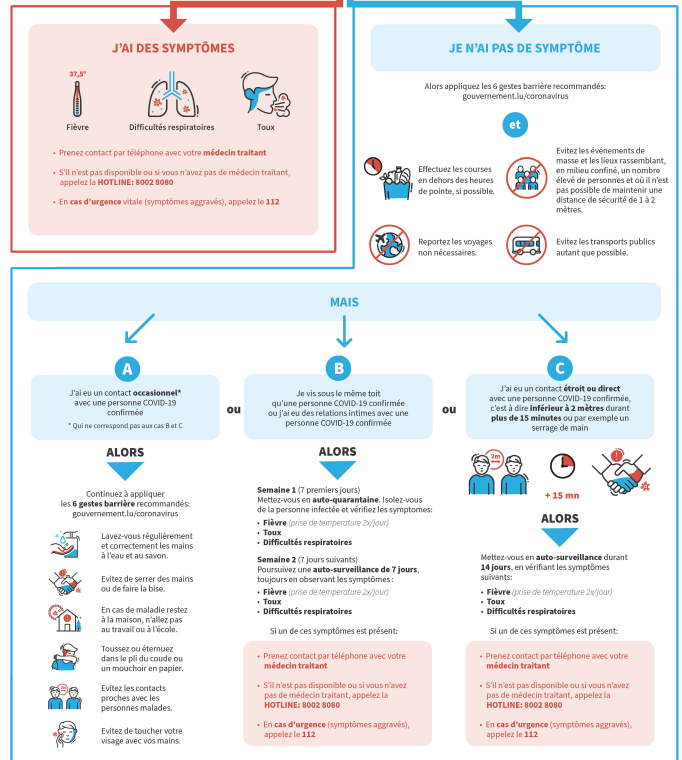
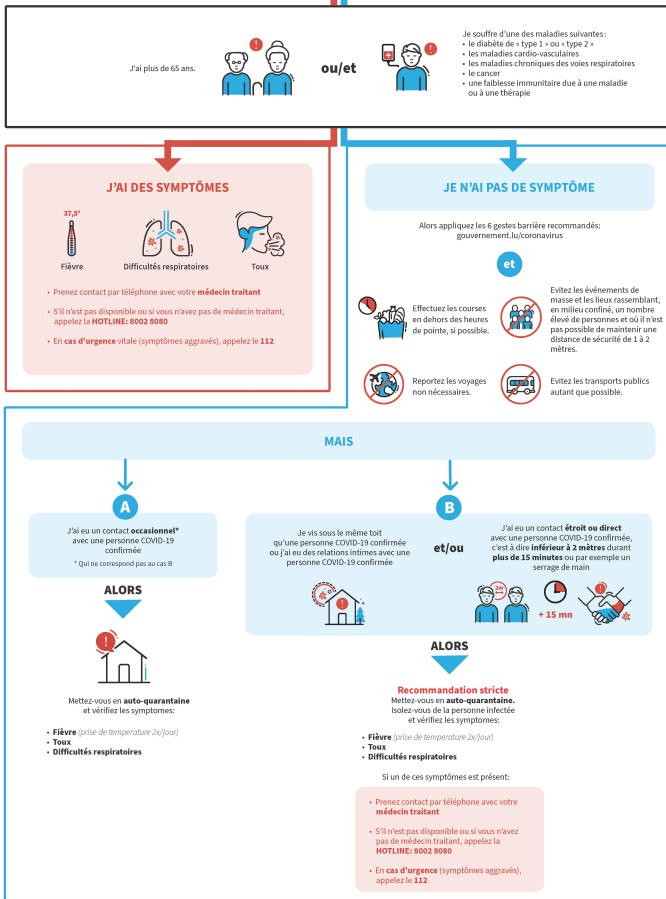
Sante.lu



Decision tree

## JE SUIS VULNÉRABLE

## JE NE SUIS PAS VULNÉRABLE



Ceci est un message de: LE GOUVERNEMENT DU GRAND-DUCHÉ DE LUXEMBOURG  
Ministère de la Santé  
Directorat de la Santé

**Sante.lu**

## Health Portal

LE GOUVERNEMENT DU GRAND-DUCHÉ DE LUXEMBOURG luxembourg.lu guichet.lu gouvernement.lu Autres sites

# Sante.lu

URGENCES ET GARDES

Politique de santé | Prévention | Maladies | Professions | Droits | **Espace professionnel** | Plus

Retrait des produits infantiles PICOT et MILUMEL >>>

Retrait de médicament pour non-conformité : Lansoyl Paraffine gel oral 225gr >>>

[Voir toutes les alertes →](#)

SAVE THE DATE

HERCÈRE 9 mai 2018

## 10<sup>ÈME</sup>

### CONFÉRENCE NATIONALE DE LA SANTÉ

PLAN NATIONAL SANTÉ: DÉFIS & PRIORITÉS

L'AMBIQUE D'INVENTION ENTRE LUXEMBOURG & LA BELGIQUE

ENTRÉE GRATUITE

15-01-2018

10ème Conférence nationale Santé

Sante.lu

● ○ ○ ○ ○

ACTUALITÉS

SUIVEZ LA MINISTRE...

For more information

## Documents

- › [What you have to do if you are in auto-quarantine \(Pdf - 158 Kb\)](#)
- › [What to do if you suffer from a fever an cough and you stay at home\(Pdf - 161 Kb\)](#)
- › [What do you and people close to you \(living under the same roof, intimate relations\) have to do if you are isolated at home?\(Pdf - 168 Kb\)](#)
- › [Arbre décisionnel - comment se comporter \(Pdf - 925 Kb\)](#)
- › [La capacité du système de santé - French -\(Pdf - 593 Kb\)](#)

## News

- › [All the news flashes on the Coronavirus in Luxembourg - french](#)

## Publications

- › [#BLEIFTDOHEEM and follow the recommandations \(Pdf - 1.07 Mb\)](#)
- › [Flyer Coronavirus - Information and guidelines \(Pdf - 2.01 Mb\)](#)
- › [Poster Coronavirus - Information and guidelines \(landscape\) \(Pdf - 1.56 Mb\)](#)
- › [Poster Coronavirus - Information and guidelines \(vertical\) \(Jpeg - 1.72 Mb\)](#)
- › [Link to Flyer "When to wash your hands" - French](#)
- › [Poster Coronavirus - Vulnerable People \(Pdf - 1.55 Mb\)](#)

## Related procedures

- › [Certificat de congé pour raisons familiales dans le cadre de la limitation de la propagation d'une épidémie \(COVID-19\)](#)

## Further information

- › [Portail santé](#)
- › [Centre européen de prévention et de contrôle des maladies \(ECDC\)](#)
- › [Organisation mondiale de la Santé \(OMS\)](#)
- › [EU Commission information on coronavirus](#)

## Other

- › [Coping with stress \(Pdf - 55 Kb\)](#)

## Organisation(s)

- › [Health directorate](#)
- › [High Commission for National Protection](#)
- › [Ministry of Health](#)
- › [Ministry of Labour, Employment and the Social and Solidarity Economy](#)

## Topics

- › [Health / Well-being](#)

Sections

[News](#)

[The Government](#)

[Ministries](#)

[Departments](#)

[Topics](#)

[Political system](#)

[Publications](#)

Support

[Contact](#)

[Sitemap](#)

[About this site](#)

[General Legal Notice \(GTCU\)](#)

Stay informed

[Twitter](#)

[Facebook](#)

[RSS](#)

[Newsletter](#)

