

EN

FR

DE

EN

LU

News

The Government

Ministries

Departments

Topics

Political system

Search



Coronavirus: COVID-19

> 

> 

> 

HOTLINE: 8002 8080

Situation update (24.03.2020):

1.099 confirmed cases

8 deaths

WHAT IS CORONAVIRUS?

Definition of Coronavirus

Where did the new coronavirus appear?

What is a pandemic?

SYMPTOMS

What are the symptoms?

Can a blood test detect the presence of the virus?

Can my family doctor prescribe a laboratory test to identify the SARS-CoV-2-virus?

If I am suspected of being infected with COVID-19 and a test was executed, who receives the result of the test?

TRANSMISSION AND TREATMENT

How is COVID-19 coronavirus spread?

Is COVID-19 transmissible during sexual intercourse?

Does the new coronavirus pose a threat to pregnant women or fetuses?

How should I behave in order to be as little exposed as possible?

Can pets transmit COVID-19?

Is there a vaccine against COVID-19?

What treatment exists for COVID-19 infection?

How can I see my family doctor?

How do medical centres operate in the context of the coronavirus?

What to do in case of anxiety?

PROTECTION

What should I do to protect myself and to avoid being contaminated?

Who is considered vulnerable

I am a vulnerable person, what should I do?

For immunosuppressed people, is the wearing of a mask recommended to protect against the a coronavirus infection?

When to wear a mask?

What does an isolation measure mean?

What does an auto-isolation measure mean?

What does an auto-quarantine measure mean?

What does an auto-monitoring measure mean?

What happens if the virus' spread cannot be contained by confinement measures?

Can I still visit elderly people in a care facility?

Which protective measures are taken in hospital facilities?

HOW IS LUXEMBOURG PREPARING?

I am a volunteer, whom should I contact to offer my help?

A preparation at various levels

What does the High Commission for National Protection (HCPN) do?

What is the composition of the crisis unit?

What are the missions of the crisis unit?

Are our hospitals and health services prepared to accommodate many patients?

Why has the government decided to limit or forbid certain activities, visits, events and others?

Which commercial activities continue to be available?

Are administrations and public institutions impacted by these restrictions?

Which essential activities for society are maintained?

Which activities have been cancelled or severely limited?

TRAVEL INFO

Any unnecessary travel must be cancelled or postponed.

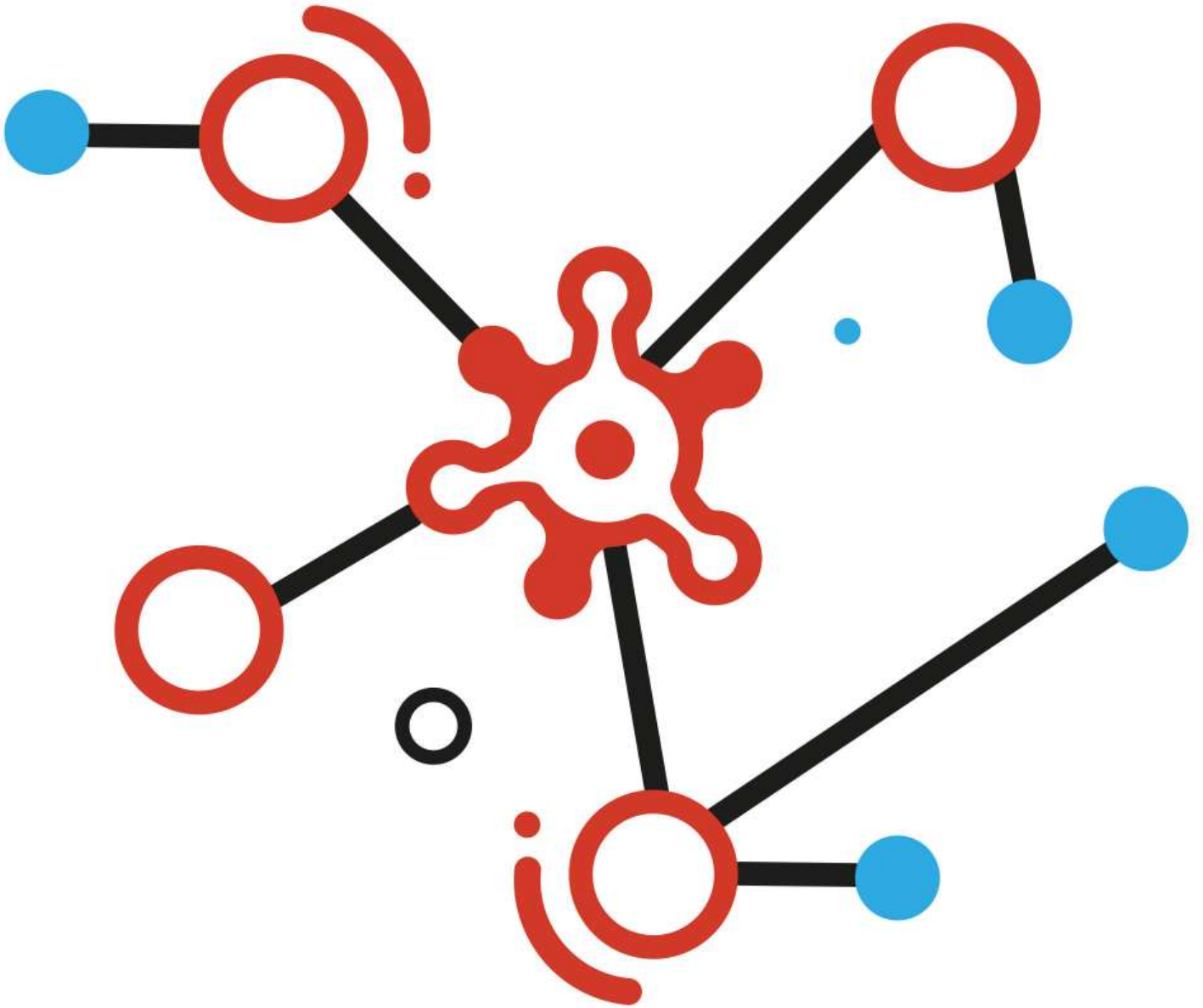
What does the closure of the "Schengen borders" mean?

What are the recommendations to follow when travelling?

Can adults returning from a trip abroad (private or professional), resume their professional activity?

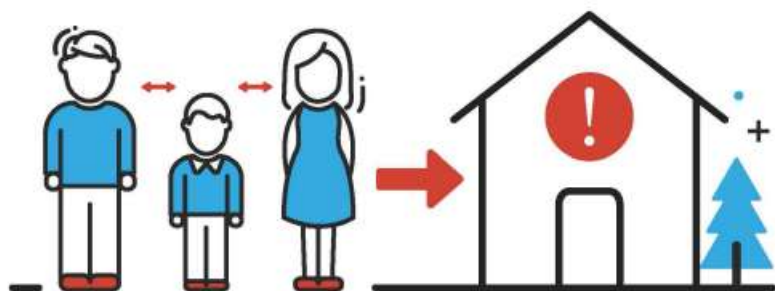
For all other questions related to COVID-2019, please consult the websites of the Luxembourg Government www.covid19.lu, the European Center for Disease Prevention and Control (ECDC) www.ecdc.eu or the World Health Organization (WHO) www.who.int.

[Link to covid19.lu](http://www.covid19.lu)



#BLEIFTDOHEEM

©Ministère de la Santé



PLEASE STAY AT HOME.

#BLEIFTDOHEEM

RESTEZ À LA MAISON.

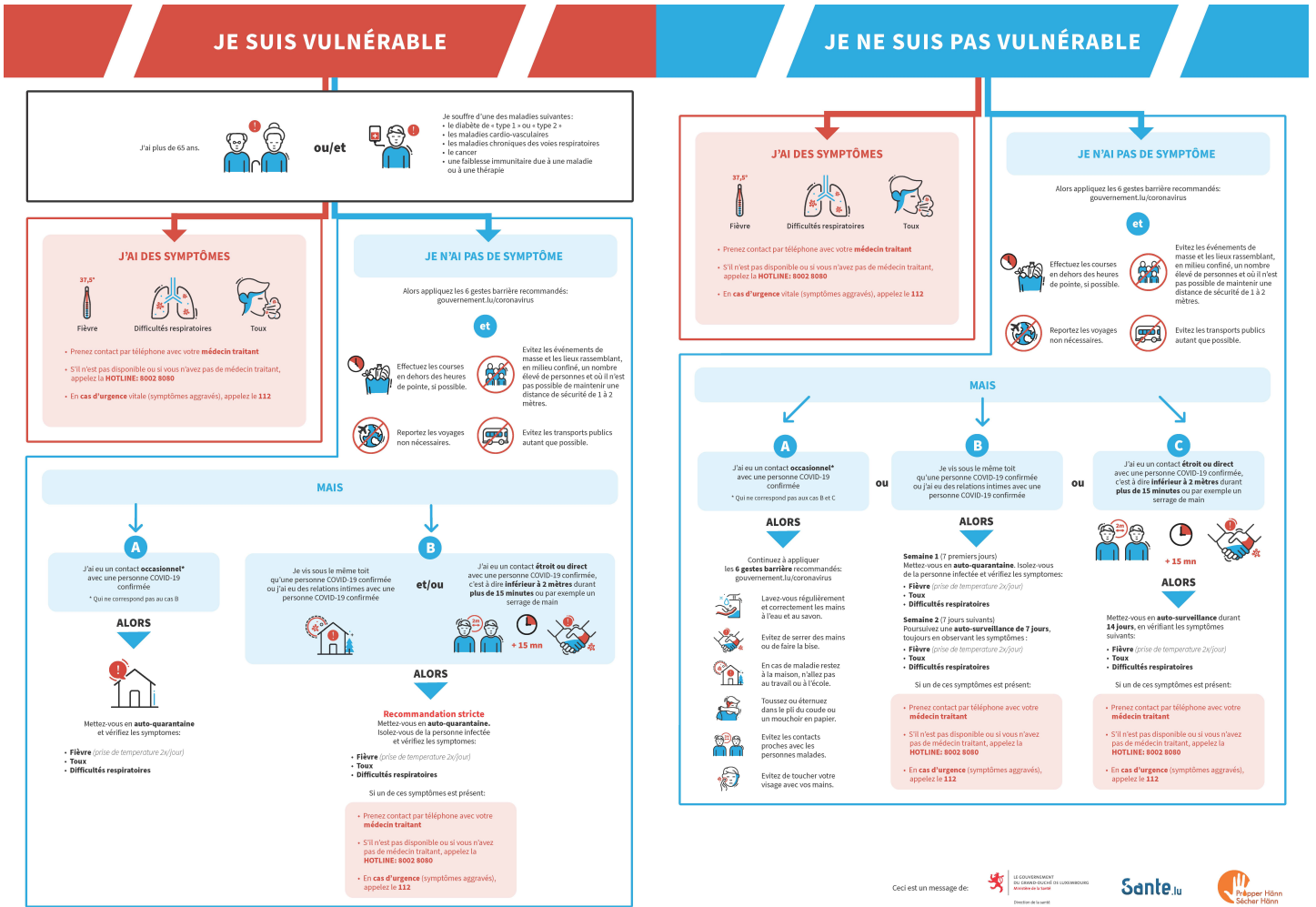


LE GOUVERNEMENT
DU GRAND-DUCHÉ DE LUXEMBOURG

Health professionals

**PROFESSIONNELS
DE SANTÉ**

Decision tree



Health Portal

15-01-2018
10ème Conférence nationale Santé

ACTUALITÉS **SUIVEZ LA MINISTRE...**

For more information

Documents

- › [What you have to do if you are in auto-quarantine](#) (Pdf - 182 Kb)
- › [What to do if you suffer from a fever an cough and you stay at home](#)(Pdf - 161 Kb)
- › [What do you and people close to you \(living under the same roof, intimate relations\) have to do if you are isolated at home?](#)(Pdf - 724 Kb)
- › [Arbre décisionnel - comment se comporter](#) (Pdf - 925 Kb)
- › [La capacité du système de santé - French](#) - (Pdf - 593 Kb)

News

- › [Official communications on the Coronavirus in Luxembourg - french](#)

Publications

- › [#BLEIFTDOHEEM and follow the recommandations](#) (Pdf - 1.07 Mb)
- › [Flyer Coronavirus - Information and guidelines](#) (Pdf - 993 Kb)
- › [Poster Coronavirus - Information and guidelines \(landscape\)](#) (Pdf - 173 Kb)
- › [Poster Coronavirus - Information and guidelines \(vertical\)](#) (Jpeg - 2.67 Mb)
- › [Link to Flyer "When to wash your hands" - French](#)

Related procedures

- › [Certificat de congé pour raisons familiales dans le cadre de la limitation de la propagation d'une épidémie \(COVID-19\)](#)

Further information

- › [Portail santé](#)
- › [Centre européen de prévention et de contrôle des maladies \(ECDC\)](#)
- › [Organisation mondiale de la Santé \(OMS\)](#)
- › [EU Commission information on coronavirus](#)

Other

- › [Coping with stress](#) (Pdf - 55 Kb)

Organisation(s)

- › [Health directorate](#)
- › [High Commission for National Protection](#)
- › [Ministry of Health](#)
- › [Ministry of Labour, Employment and the Social and Solidarity Economy](#)

Topics

- › [Health / Well-being](#)

Last update 25.03.2020

Sections

[News](#)

[The Government](#)

[Ministries](#)

[Departments](#)

[Topics](#)

[Political system](#)

[Publications](#)

Support

[Contact](#)

[Sitemap](#)

[About this site](#)

[General Legal Notice \(GTCU\)](#)

Stay informed

[Twitter](#)

[Facebook](#)

[RSS](#)

[Newsletter](#)
