



EN

FR

DE

EN

LU

News

The Government

Ministries

Departments

Topics

Political system

Search



## Coronavirus: COVID-19



## Situation update

(02.04.2020)

People tested **positive** for COVID-19: **2.487**

- › Residents: **2.099**
- › Non-residents: **388**

Tests **carried out** since the beginning of the crisis: **20.092**

**Deaths: 30 \***

Next update:

**03.04.2020 between 17:30 - 18:00**

*(\* does not include the decease of 1 person from the French region Great East who was hospitalized in Luxembourg)*

## HOTLINE

Citizens and businesses

**8002 8080**

From abroad

**+352 4977 1 9200**

A psychological support service is available 7 days a week, from 7:00 to 23:00.

## THE CORONAVIRUS

Definition

What is a pandemic?

How is COVID-19 coronavirus spread?

## PROTECTION

The Government's strategy

How should I behave in order to be as little exposed as possible?

What should I do to protect myself and to avoid being contaminated?

Who is considered vulnerable

I am a vulnerable person, what should I do?

Does the new coronavirus pose a threat to pregnant women or fetuses?

Can I still visit elderly people in a care facility?

When to wear a mask?

For immunosuppressed people, is the wearing of a mask recommended to protect against the a coronavirus infection?

What to do in case of anxiety?

## SYMPTOMS AND SCREENING

What are the symptoms?

What if I have a health problem?

Can my family doctor prescribe a laboratory test to identify the SARS-CoV-2-virus?

If I am suspected of being infected with COVID-19 and a test was executed, who receives the result of the test?

Can a blood test detect the presence of the virus?

Is there a vaccine against COVID-19?

## MEASURES AND MEDICAL TREATMENT

I have been tested positive, what's the procedure?

What does an isolation measure mean?

What does an auto-isolation measure mean?

What does an auto-quarantine measure mean?

What does an auto-monitoring measure mean?

What treatment exists for COVID-19 infection?

## MANAGEMENT OF THE HEALTH CRISIS

Why has the government decided to limit or forbid certain activities, visits, events and others?

Which protective measures are taken in hospital facilities?

Are our hospitals and health services prepared to accommodate many patients?

Which activities have been cancelled or severely limited?

I am a volunteer, whom should I contact to offer my help?

For all other questions related to COVID-2019, please consult the websites of the Luxembourg Government [www.covid19.lu](http://www.covid19.lu), the European Center for Disease Prevention and Control (ECDC) [www.ecdc.eu](http://www.ecdc.eu) or the World Health Organization (WHO) [www.who.int](http://www.who.int).

## Advanced Care Centers

**CENTRES  
DE SOINS AVANCÉS**

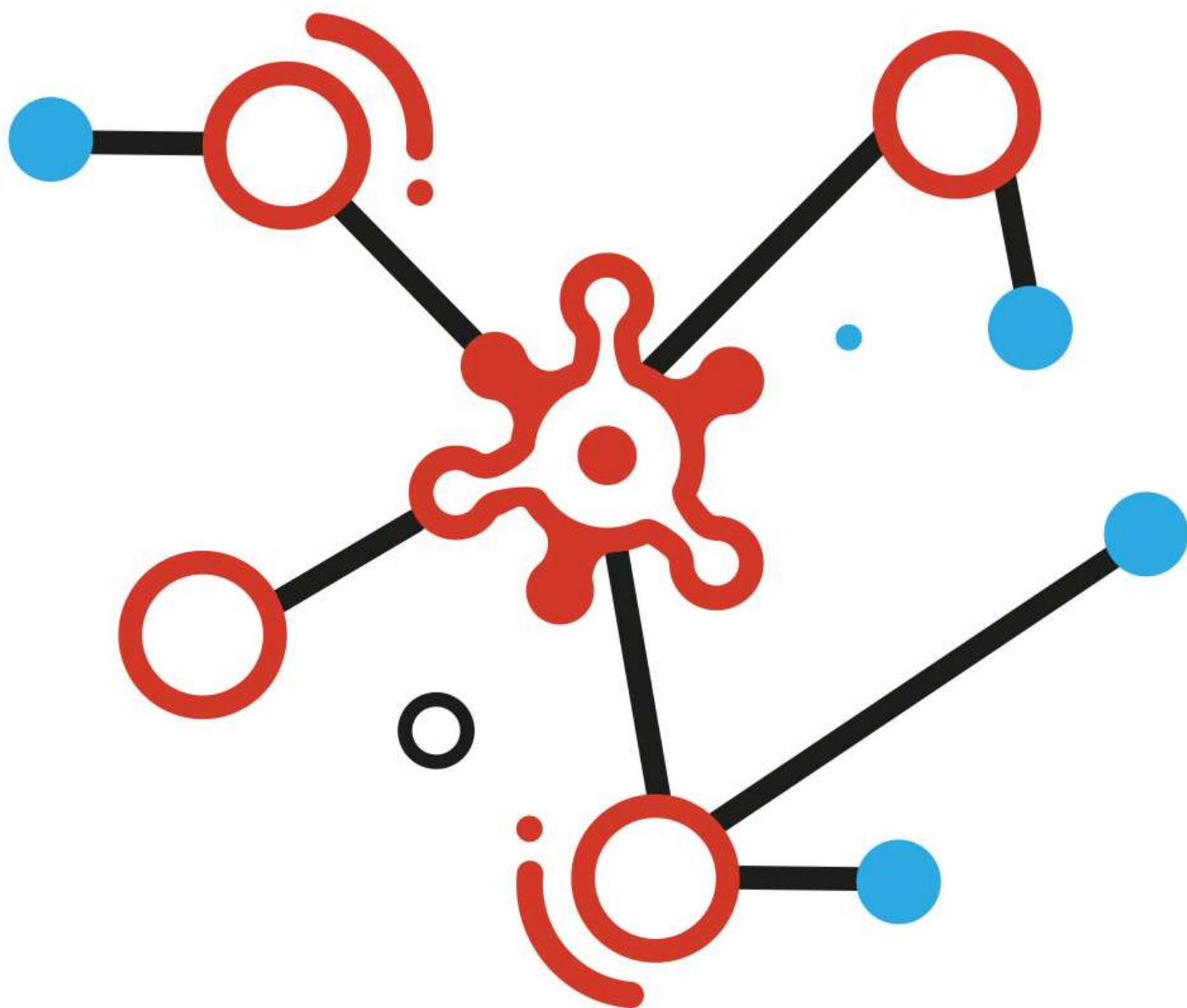
## Medical Teleconsultation

**AGENCE**  
**eSanté**  
**L U X E M B O U R G**

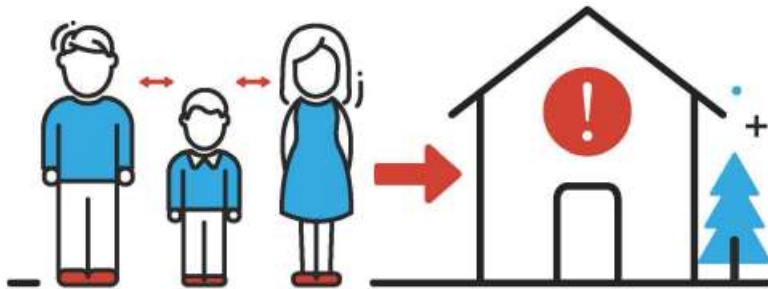
## Health professionals

# PROFESSIONNELS DE SANTÉ

[Link to covid19.lu](https://covid19.lu)



#BLEIFTDOHEEM



PLEASE STAY AT HOME.

**#BLEIFTDOHEEM**

RESTEZ À LA MAISON.



LE GOUVERNEMENT  
DU GRAND-DUCHÉ DE LUXEMBOURG

Decision tree

#BLEIFTDOHEEM YOU DON'T HAVE TO GO OUTSIDE? PLEASE STAY AT HOME! #BLEIFTDOHEEM YOU DON'T HAVE TO GO OUTSIDE? PLEASE STAY AT HOME! #BLEIFTDOHEEM

PLEASE APPLY THE GENERAL RECOMMENDATIONS. ONLY GO OUTSIDE IF FURTHER INFORMATIONS

- Avoid close contact. Keep a distance of 2 meters at all times.
- Wash your hands regularly and properly using water and soap.
- Stop vulnerable people safe!
- If you don't have to go to work, stay at home!
- Avoid shaking hands or kissing.
- Cough or sneeze into a tissue or into the crook of the elbow.
- Avoid public transportation and delay necessary travel.
- Avoid touching your face with your hands.
- You have to go to work.
- You go grocery shopping for yourself or vulnerable people.
- In case of an emergency.

gouvernement.lu/coronavirus

### I AM VULNERABLE

I am over 65 years old. and/or I suffer from one of the following medical conditions:

- Diabetes Type 1 or Type 2
- Cardiovascular diseases
- Chronic diseases of the respiratory tract
- Cancer
- An immune deficiency due to a condition or therapy

### I AM NOT VULNERABLE

#### I SHOW SYMPTOMS

FEVER BREATHING DIFFICULTIES COUGH

- Call your physician.
- If he/she is not available, or if you do not have an attending physician, call the HOTLINE 9002 8000
- In case of a vital emergency (severe symptoms), call 112

#### I DO NOT SHOW ANY SYMPTOMS

**A** I have been in "occasional" contact with a person who was confirmed with COVID-19. \*Does not correspond to case B.

**THEN**

Quarantine yourself and isolate yourself from the infected person. Monitor the following symptoms:

FEVER  
BREATHING DIFFICULTIES  
COUGH

**B** I live under the same roof as person who was confirmed with COVID-19, or I have had intimate relations with a person who was confirmed with COVID-19. and/or I have been in close or direct contact with a person who was confirmed with COVID-19, i.e. within 2 meters of that person for over 15 minutes, or for example have shaken hands.

**THEN**

**STRICT RECOMMENDATION:** Quarantine yourself and isolate yourself from the infected person. Monitor the following symptoms:

FEVER BREATHING DIFFICULTIES COUGH

Take your temperature twice a day.

If one of these symptoms appears:

- Call your physician.
- If he/she is not available, or if you do not have an attending physician, call the HOTLINE 9002 8000
- In case of a vital emergency (severe symptoms), call 112

#### I DO NOT SHOW ANY SYMPTOMS

**A** Please apply the general recommendations.

**B** I live under the same roof as person who was confirmed with COVID-19, or I have had intimate relations with a person who was confirmed with COVID-19.

**THEN**

**WEEK 1 - first 7 days**

Quarantine yourself and isolate yourself from the infected person. Monitor the following symptoms:

FEVER BREATHING DIFFICULTIES COUGH

Take your temperature twice a day.

**WEEK 2 - the following 7 days**

Continue monitoring yourself for 7 days, by looking out for the following symptoms:

FEVER BREATHING DIFFICULTIES COUGH

Take your temperature twice a day.

If one of these symptoms appears:

- Call your physician.
- If he/she is not available, or if you do not have an attending physician, call the HOTLINE 9002 8000
- In case of a vital emergency (severe symptoms), call 112

**C** I have been in close or direct contact with a person who was confirmed with COVID-19, i.e. within 2 meters of that person for over 15 minutes, or for example have shaken hands.

**THEN**

Monitor yourself for 14 days, while checking for the following symptoms:

FEVER BREATHING DIFFICULTIES COUGH

Take your temperature twice a day.

If one of these symptoms appears:

- Call your physician.
- If he/she is not available, or if you do not have an attending physician, call the HOTLINE 9002 8000
- In case of a vital emergency (severe symptoms), call 112

gouvernement.lu/coronavirus

#BLEIFTDOHEEM

This is a message of: Sante.lu

## Health Portal

LE GOUVERNEMENT DE LUXEMBOURG

luxembourg.lu guichet.lu gouvernement.lu Autres sites

# Sante.lu

URGENCES ET GARDES

Politique de santé Prévention Maladies Professions Droits Espace professionnel Plus

Retrait des produits infantiles PICOT et MILUMEL >>>

Retrait de médicament pour non-conformité : Lansoyl Paraffine gel oral 225gr >>>

Voir toutes les alertes →

SAVE THE DATE

10<sup>ÈME</sup> CONFÉRENCE NATIONALE DE LA SANTÉ

MERCREDI 9 mai 2018

DI<sup>10</sup>ÈME CONFÉRENCE NATIONALE DE LA SANTÉ

PLAN NATIONAL SANTÉ DÉFIS & PRIORITÉS

L'UNION FAIT LA FORCE

15-01-2018

10ème Conférence nationale Santé

Sante.lu

ACTUALITÉS SUIVEZ LA MINISTRE...

## Information and recommendations for Businesses

# CORONAVIRUS COVID-19 ECONOMIC SUPPORT PACKAGE

## 4 OBJECTIVES



Meeting short-term  
liquidity needs



Helping to cope with  
cash-flow difficulties



Facilitate corporate  
lending through  
state-backed guarantees



Job retention

## 8 NEW MEASURES

For more information

Documents

- › [What you have to do if you are in auto-quarantine](#) (Pdf - 182 Kb)
- › [What to do if you suffer from a fever and cough and you stay at home](#) (Pdf - 690 Kb)
- › [What do you and people close to you \(living under the same roof, intimate relations\) have to do if you are isolated at home?](#) (Pdf - 724 Kb)
- › [Decision tree - how to behave](#) (Pdf - 585 Kb)
- › [La capacité du système de santé - French](#) - (Pdf - 593 Kb)

News

- › [Official communications on the Coronavirus in Luxembourg - french](#)

Publications

- › [Hotline - Psychological Support](#) (Pdf - 1.22 Mb)
- › [#BLEIFTDOHEEM and follow the recommendations](#) (Pdf - 1.07 Mb)
- › [Flyer Coronavirus - Information and guidelines](#) (Pdf - 993 Kb)
- › [Poster Coronavirus - Information and guidelines \(landscape\)](#) (Pdf - 173 Kb)
- › [Poster Coronavirus - Information and guidelines \(vertical\)](#) (Jpeg - 2.67 Mb)
- › [Link to Flyer "When to wash your hands" - French](#)
- › [Coping with stress](#) (Pdf - 55 Kb)

Multimedia

› [Media Centre](#)

## Further information

- › [Portail santé](#)
- › [Centre européen de prévention et de contrôle des maladies \(ECDC\)](#)
- › [Organisation mondiale de la Santé \(OMS\)](#)
- › [EU Commission information on coronavirus](#)

## Organisation(s)

- › [Health directorate](#)
- › [High Commission for National Protection](#)
- › [Ministry of Health](#)
- › [Ministry of Labour, Employment and the Social and Solidarity Economy](#)

## Topics

- › [Health / Well-being](#)

Last update 02.04.2020

Sections

[News](#)

[The Government](#)

[Ministries](#)

[Departments](#)

[Topics](#)

[Political system](#)

[Publications](#)

Support

[Contact](#)

[Sitemap](#)

[About this site](#)

[General Legal Notice \(GTCU\)](#)

Stay informed

[Twitter](#)

[Facebook](#)

[RSS](#)

[Newsletter](#)

