



## WEBSITE CORONAVIRUS (COVID-19)

[www.covid19.lu](http://www.covid19.lu)

The Luxembourg Government [gouvernement.lu](http://gouvernement.lu)  Menu main  Search

EN

FR

DE

EN

LU

[News](#)

[The Government](#)

[Ministries](#)

[Departments](#)

[Topics](#)

[Political system](#)

Search



# Coronavirus: COVID-19



## Situation update

(15.04.2020)

People tested **positive** for COVID-19: **3.373**

- › Residents: **2.760**
- › Non-residents: **613**
- › Average age: **46 years**
- › Ratio men / women: **50,5% / 49,5%**

Tests **carried out** since the beginning of the crisis: **30.723**

- › Residents: **25.060**
- › Non-residents: **5.663**

**Deaths: 69\***

› Median age: **84 years**

**Hospitalisations** (COVID-19 and suspected cases): **191**

› Standard care: **158**

› Intensive care: **33\*\***

**Hospital discharges: 526**

Next update:

**16.04.2020 between 17:30 - 18:00**

*(\* does not include the decease of 1 person from the French Great East region who was hospitalized in Luxembourg)*

*(\*\* does not include 9 people from the French Great East region)*

## HOTLINE

Citizens and businesses

**8002 8080**

From abroad

**+352 4977 1 9200**

A psychological support service is available 7 days a week, from 7:00 to 23:00.

## THE CORONAVIRUS

Definition

What is a pandemic?

How is COVID-19 coronavirus spread?

## PROTECTION

The Government's strategy

How should I behave in order to be as little exposed as possible?

What should I do to protect myself and to avoid being contaminated?

Who is considered vulnerable

I am a vulnerable person, what should I do?

Is the new coronavirus dangerous for children?

Does the new coronavirus pose a threat to pregnant women or fetuses?

Can I still visit elderly people in a care facility?

When to wear a mask?

For immunosuppressed people, is the wearing of a mask recommended to protect against the a coronavirus infection?

What to do in case of anxiety?

How to avoid fake news contamination?

## SYMPTOMS AND SCREENING

What are the symptoms?  
How do I know if I have COVID-19 or hay fever?  
What if I have a health problem?  
How does teleconsultation work?  
How can I see my family doctor?  
I urgently need a dentist, where can I go?  
Where do I have to go to find out if I have Coronavirus?  
What is the purpose of a thoracic scanner in case of suspicion of COVID-19?  
Can my family doctor prescribe a laboratory test to identify the SARS-CoV-2-virus?  
If I am suspected of being infected with COVID-19 and a test was executed, who receives the result of the test?  
Can a blood test detect the presence of the virus?  
Is there a vaccine against COVID-19?

## MEASURES AND MEDICAL TREATMENT

I have been tested positive, what's the procedure?  
What does an isolation measure mean?  
What does an self-isolation measure mean?  
What does an self-quarantine measure mean?  
What does an self-monitoring measure mean?  
What treatment exists for COVID-19 infection?

## MANAGEMENT OF THE HEALTH CRISIS

Why has the government decided to limit or forbid certain activities, visits, events and others?  
Which protective measures are taken in hospital facilities?  
Are our hospitals and health services prepared to accommodate many patients?  
Which activities have been cancelled or severely limited?  
I am a volunteer, whom should I contact to offer my help?  
For all other questions related to COVID-2019, please consult the websites of the Luxembourg Government [www.covid19.lu](http://www.covid19.lu), the European Center for Disease Prevention and Control (ECDC) [www.ecdc.eu](http://www.ecdc.eu) or the World Health Organization (WHO) [www.who.int](http://www.who.int).

## Advanced Care Centers

# CENTRES DE SOINS AVANCÉS

Medical Teleconsultation

**AGENCE**  
**eSanté**  
**L U X E M B O U R G**

Health professionals

**PROFESSIONNELS  
DE SANTÉ**

Wearing a mask as additional precautionary measure



**COVID-19 PANDEMIC:  
WEARING A MASK AS ADDITIONAL  
PRECAUTIONARY MEASURE**



LE GOUVERNEMENT  
DU GRAND-DUCHÉ DE LUXEMBOURG



#BLEIFTDOHEEM

©Ministère de la Santé



PLEASE STAY AT HOME.

**#BLEIFTDOHEEM**

RESTEZ À LA MAISON.



LE GOUVERNEMENT  
DU GRAND-DUCHÉ DE LUXEMBOURG

Decision tree

©Ministère de la Santé

#BLEIFTDOHEEM YOU DON'T HAVE TO GO OUTSIDE? PLEASE STAY AT HOME!

PLEASE APPLY THE GENERAL RECOMMENDATIONS.

- Avoid close contact. Keep a distance of 2 meters at all times.
- Wash your hands regularly and properly using water and soap.
- Stop vulnerable people safe!
- If you don't have to go to work, stay at home!
- Avoid shaking hands or kissing.
- Cough or sneeze into a tissue or into the crook of the elbow.
- Avoid public transportation and delay any necessary travel.
- Avoid touching your face with your hands.

ONLY GO OUTSIDE IF

- You have to go to work.
- You go grocery shopping for yourself or vulnerable people.
- In case of an emergency.

FURTHER INFORMATIONS

[gouvernement.lu/coronavirus](https://gouvernement.lu/coronavirus)

## I AM VULNERABLE

## I AM NOT VULNERABLE

I am over 65 years old.

and/or

I suffer from one of the following medical conditions:

- Diabetes Type 1 or Type 2
- Cardiovascular diseases
- Chronic diseases of the respiratory tract
- Cancer
- An immune deficiency due to a condition or therapy

### I SHOW SYMPTOMS

FEVER BREATHING DIFFICULTIES COUGH

- Call your physician.
- If the latter is not available, or if you do not have an attending physician, call the HOTLINE 9002 8888
- In case of a vital emergency (severe symptoms), call 112

### I SHOW SYMPTOMS

FEVER BREATHING DIFFICULTIES COUGH

- Call your physician.
- If the latter is not available, or if you do not have an attending physician, call the HOTLINE 9002 8888
- In case of a vital emergency (severe symptoms), call 112

### I DO NOT SHOW ANY SYMPTOMS

Further information: [gouvernement.lu/coronavirus](https://gouvernement.lu/coronavirus)

### I DO NOT SHOW ANY SYMPTOMS

**A** I have been in occasional\* contact with a person who was confirmed with COVID-19

THEN

Quarantine yourself and isolate yourself from the infected person. Monitor the following symptoms:

FEVER  
BREATHING DIFFICULTIES  
COUGH

**B** I live under the same roof as person who was confirmed with COVID-19 or I have had intimate relations with a person who was confirmed with COVID-19

and/or

I have been in close or direct contact with a person who was confirmed with COVID-19, i.e. within 2 meters of that person for over 15 minutes, or for example have shaken hands.

THEN

STRICT RECOMMENDATION: Quarantine yourself and isolate yourself from the infected person. Monitor the following symptoms:

FEVER BREATHING DIFFICULTIES COUGH

- Call your physician.
- If the latter is not available, or if you do not have an attending physician, call the HOTLINE 9002 8888
- In case of a vital emergency (severe symptoms), call 112

### I DO NOT SHOW ANY SYMPTOMS

**A** I live under the same roof as person who was confirmed with COVID-19, or I have had intimate relations with a person who was confirmed with COVID-19

THEN

WEEK 1 - first 7 days

Quarantine yourself and isolate yourself from the infected person. Monitor the following symptoms:

FEVER BREATHING DIFFICULTIES COUGH

WEEK 2 - the following 7 days

Continue monitoring yourself for 7 days, by looking out for the following symptoms:

FEVER BREATHING DIFFICULTIES COUGH

**B** I have been in close or direct contact with a person who was confirmed with COVID-19, i.e. within 2 meters of that person for over 15 minutes, or for example have shaken hands.

THEN

Monitor yourself for 14 days, while checking for the following symptoms:

FEVER BREATHING DIFFICULTIES COUGH

- Call your physician.
- If the latter is not available, or if you do not have an attending physician, call the HOTLINE 9002 8888
- In case of a vital emergency (severe symptoms), call 112

Cope with confinement - Gestures of well-being

# @HOME

**A FEW SIMPLE GESTURES OF WELL-BEING THAT  
WILL HELP YOU COPE WITH CONFINEMENT**



**I CHECK OUT THE NEWS AND I RESPECT  
THE OFFICIAL RECOMMENDATIONS**



**I PLAN MY DAY**



**I REMAIN ACTIVE**



**I TAKE CARE OF MYSELF**



**I CONTROL MY ENVIRONMENT**



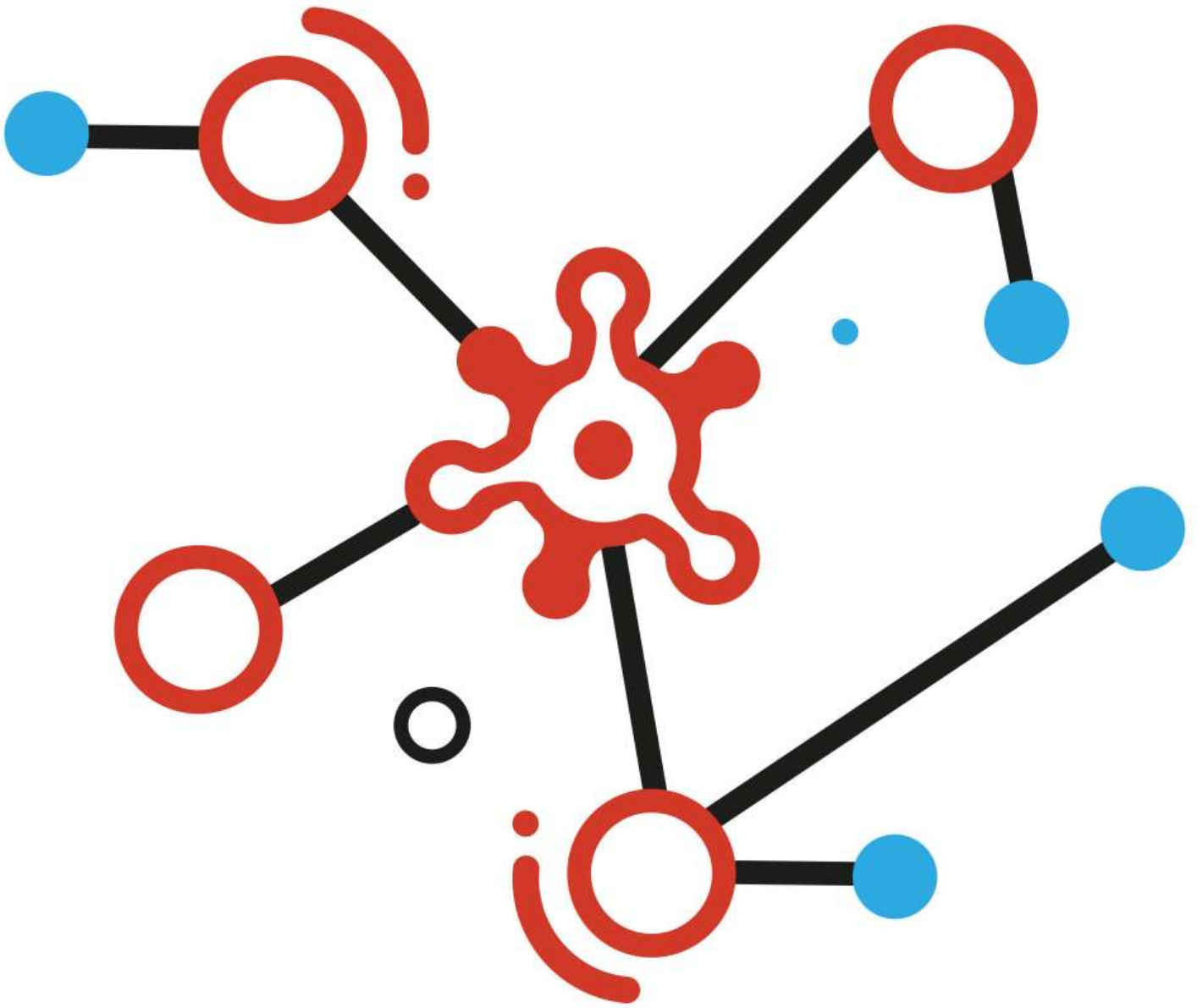
**I STAY CONNECTED TO MY SOCIAL NETWORK**



**I WATCH MY STATE OF MIND**

[Link to covid19.lu](https://covid19.lu)





Health Portal

 Retrait des produits infantiles PICOT et MILUMEL >>

Retrait de médicament pour non-conformité : Lansoyl Paraffine gel oral 225gr >>

Voir toutes les alertes →

SAVE THE DATE

10<sup>ÈME</sup>

MEcredi 9 mai 2018

DI<sup>X</sup>IÈME CONFÉRENCE NATIONALE DE LA SANTÉ

PLAN NATIONAL SANTÉ: DÉFIS & PRIORITÉS

LUXEMBOURG INVITATION ENTER VORBEREIDUNG  
à PLACE DE L'EUROPE  
L-1488 LUXEMBOURG  
ENTRÉE GRATUITE

15-01-2018  
10ème Conférence nationale Santé

Sante.lu

● ○ ○ ○ ○

ACTUALITÉS

SUIVEZ LA MINISTRE...



Information and recommendations for Businesses

## CORONAVIRUS COVID-19 ECONOMIC SUPPORT PACKAGE

### 4 OBJECTIVES



Meeting short-term liquidity needs



Helping to cope with cash-flow difficulties



Facilitate corporate lending through state-backed guarantees



Job retention

### 8 NEW MEASURES

For more information

Documents

- › [What you have to do if you are in auto-quarantine](#) (Pdf - 671 Kb)
- › [What to do if you suffer from a fever an cough and you stay at home](#)(Pdf - 515 Kb)
- › [What do you and people close to you \(living under the same roof, intimate relations\) have to do if you are isolated at home?](#)(Pdf - 728 Kb)
- › [Decision tree - how to behave](#)(Pdf - 585 Kb)
- › [La capacité du système de santé - French](#) -(Pdf - 593 Kb)

## News

- › [Official communications on the Coronavirus in Luxembourg - french](#)

## Publications

- › [Hotline - Psychological Support](#) (Pdf - 1.22 Mb)
- › [#BLEIFTDHEEM and follow the recommandations](#) (Pdf - 1.07 Mb)
- › [Flyer Coronavirus - Information and guidelines](#)(Pdf - 993 Kb)
- › [Poster Coronavirus - Information and guidelines \(landscape\)](#) (Pdf - 173 Kb)
- › [Poster Coronavirus - Information and guidelines \(vertical\)](#) (Jpeg - 2.67 Mb)
- › [Link to Flyer "When to wash your hands" - French](#)
- › [Coping with stress](#) (Pdf - 55 Kb)

## Multimedia

- › [Media Centre](#)

## Further information

- › [Portail santé](#)
- › [Centre européen de prévention et de contrôle des maladies \(ECDC\)](#)
- › [Organisation mondiale de la Santé \(OMS\)](#)
- › [EU Commission information on coronavirus](#)

## Organisation(s)

- › [Health directorate](#)
- › [High Commission for National Protection](#)
- › [Ministry of Health](#)
- › [Ministry of Labour, Employment and the Social and Solidarity Economy](#)

## Topics

- › [Health / Well-being](#)

Last update 15.04.2020

Sections

[News](#)

[The Government](#)

[Ministries](#)

[Departments](#)

[Topics](#)  
[Political system](#)  
[Publications](#)

[Support](#)  
[Contact](#)  
[Sitemap](#)  
[About this site](#)  
[General Legal Notice \(GTCU\)](#)

[Stay informed](#)  
[Twitter](#)  
[Facebook](#)  
[RSS](#)  
[Newsletter](#)

