



The Luxembourg Government

# CORONAVIRUS

Search



## Daily situation update

---

It should also be noted that the statistics reported each day always correspond to the situation of the previous day.

Source: COVID-19 Research Taskforce

Next update: 23.10.2020 entre 17:30 - 18:00

Under the law on the mandatory reporting of infectious diseases, laboratories are required to report test results for certain infectious diseases within specified time limits. Thus, PCR test results regarding a COVID-19 infection must be sent to the Health Inspectorate Division within one day. Nevertheless, delays longer than one day may occur and laboratories may send some PCR test results with a delay of several days. As a result of this catching-up on tests, retrospective corrections are made to the statistics presented on the [www.covid19.lu](http://www.covid19.lu) website.

## Statistics



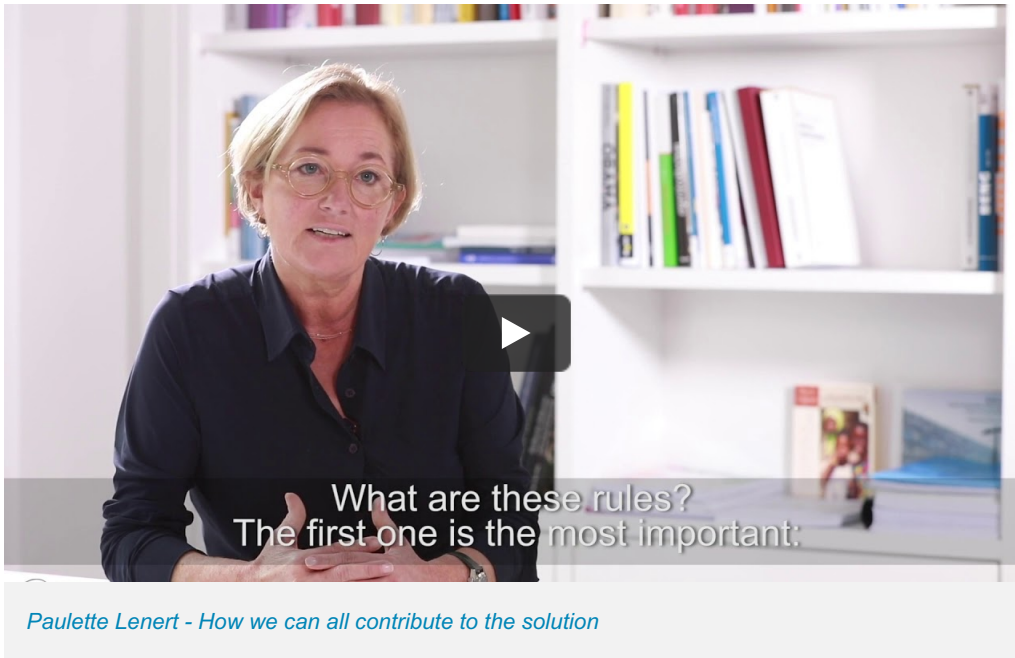
GRAPHICS



DAILY REPORTS



## Video



## Official notices



New COVID-19 cases - Weekly review: 12 - 18 October. The Ministry of Health calls for increased vigilance

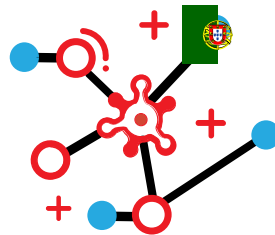
21.10.2020

The number of people testing positive for COVID-19 is up sharply (59%) with 1,280 cases for the week of 12 to 18 October, compared to 805 cases for the previous week

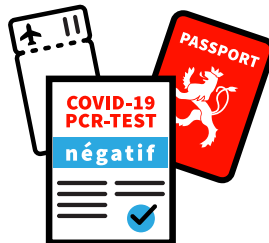
## Opening of a new COVID-19 testing centre in Luxembourg-Kirchberg

18.10.2020

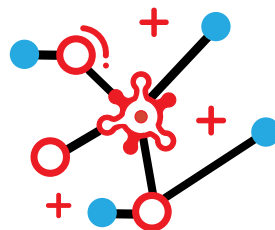
Due to the high demand for coronavirus diagnostic tests, the National Health Laboratory will open a COVID-19 testing centre on Monday, 19 October at 12 p.m. in the former building of the Luxembourg National Library.



INFORMATION ABOUT COVID-19 IN PORTUGUESE



LARGE SCALE TESTING



TOOLBOX

## RUBRIQUES

[COVID-19 news](#)

[Information by domain](#)

[Sanitary measures](#)

[Health and protection](#)

[Travellers](#)

## SUPPORT

[Contact](#)

[Sitemap](#)

[About this site](#)

[General Legal Notice](#)

## RESTEZ CONNECTÉ

