

The Luxembourg Government

CORONAVIRUS

Search



If you are between 30 and 54 years of age and would like to be vaccinated with Vaxzevria® (AstraZeneca), please register on impfen.lu.



register now

Registration via impfen.lu

[If you are between 30 and 54 years of age and would like to be vaccinated with Vaxzevria, please register on impfen.lu.](https://impfen.lu)

Official notices

The COVID-19 Consultation Centres will be closed on public holidays

29.04.2021

The two COVID-19 Consultation Centres (CCCs), located in Kirchberg and Esch-sur-Alzette will be exceptionally closed on public holidays in May, i.e. on 1, 9 and 13 May 2021.

[See more](#)

COVID-19

Rétrospective



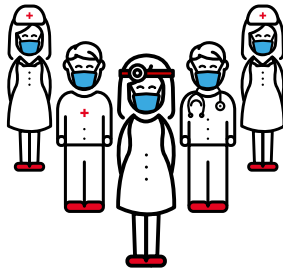
COVID-19 cases - Weekly review: 19 - 25 April

28.04.2021

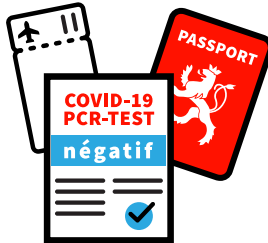
During the week from 19 to 25 April, the number of people testing positive for COVID-19 continued to decrease slightly from 1,261 to 1,231 (-2.4%), while the number of their identified close contacts also decreased.

[See more](#)

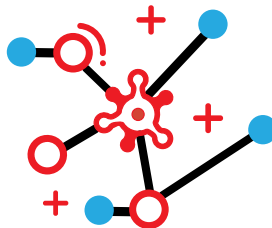
[COVID-19 news](#)



REGISTER WITH THE HEALTH RESERVE



TESTING



TOOLBOX



PROTECTION OF PERSONAL DATA

Daily situation update

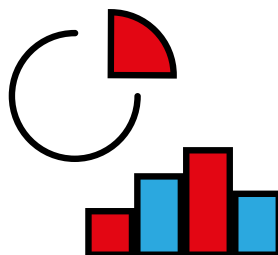
It should also be noted that the statistics reported each day always correspond to the situation of the previous day.

Source: Ministry of Health

Next update: 30.04.2021

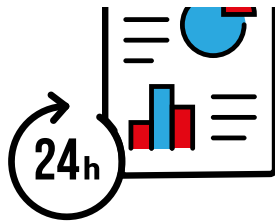
Under the law on the mandatory reporting of infectious diseases, laboratories are required to report test results for certain infectious diseases within specified time limits. Thus, PCR test results regarding a COVID-19 infection must be sent to the Health Inspectorate Division within one day. Nevertheless, delays longer than one day may occur and laboratories may send some PCR test results with a delay of several days. As a result of this catching-up on tests, retrospective corrections are made to the statistics presented on the www.covid19.lu website.

Statistics

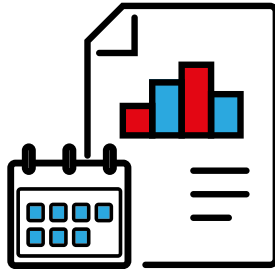


GRAPHICS





DAILY REPORTS



WEEKLY REPORTS

Last update 21.04.2021

RUBRIQUES

[Health and protection](#)

[Sanitary measures](#)

[Testing](#)

[Vaccination](#)

[Travellers](#)

[Sanitary recommendations](#)

[Information by domain](#)

[COVID-19 news](#)

SUPPORT

[Hotlines & Contact](#)

[Sitemap](#)

[Accessibility](#)

[About this site](#)

[General Legal Notice](#)

[Protection of personal data](#)

RESTEZ CONNECTÉ



