

The Luxembourg Government

CORONAVIRUS

Search



**Waiting list for residual
COVID-19 vaccines.**



**Registration and
requirements on:**

impfen.lu

[Waiting list for residual COVID-19 vaccines: Registration and requirements on impfen.lu](#)

Official notices



Implementation of a procedure to benefit from residual doses of COVID-19 vaccine

30.04.2021

As announced after the Government Council of 21 April, a waiting list has been set up in order to benefit from the remaining doses of coronavirus vaccine.

[See more](#)

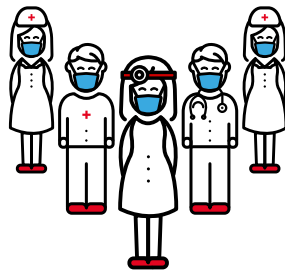
The COVID-19 Consultation Centres will be closed on public holidays

29.04.2021

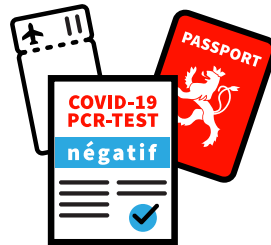
The two COVID-19 Consultation Centres (CCCs), located in Kirchberg and Esch-sur-Alzette will be exceptionally closed on public holidays in May, i.e. on 1, 9 and 13 May 2021.

[See more](#)

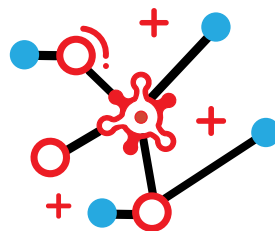
[COVID-19 news](#)



REGISTER WITH THE HEALTH RESERVE



TESTING



TOOLBOX



PROTECTION OF PERSONAL DATA

Daily situation update

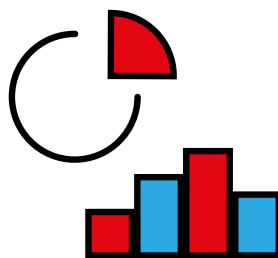
It should also be noted that the statistics reported each day always correspond to the situation of the previous day.

Source: Ministry of Health

Next update: 04.05.2021

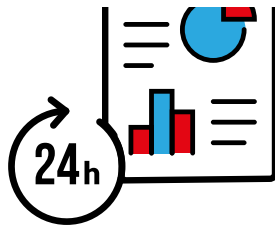
Under the law on the mandatory reporting of infectious diseases, laboratories are required to report test results for certain infectious diseases within specified time limits. Thus, PCR test results regarding a COVID-19 infection must be sent to the Health Inspectorate Division within one day. Nevertheless, delays longer than one day may occur and laboratories may send some PCR test results with a delay of several days. As a result of this catching-up on tests, retrospective corrections are made to the statistics presented on the www.covid19.lu website.

Statistics

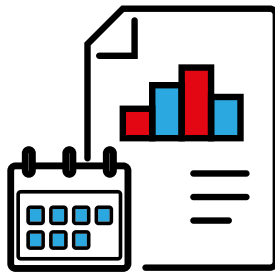


GRAPHICS





DAILY REPORTS



WEEKLY REPORTS

Last update 30.04.2021

RUBRIQUES

[Health and protection](#)

[Sanitary measures](#)

[Testing](#)

[Vaccination](#)

[Travellers](#)

[Sanitary recommendations](#)

[Information by domain](#)

[COVID-19 news](#)

SUPPORT

[Hotlines & Contact](#)

[Sitemap](#)

[Accessibility](#)

[About this site](#)

[General Legal Notice](#)

[Protection of personal data](#)

RESTEZ CONNECTÉ



