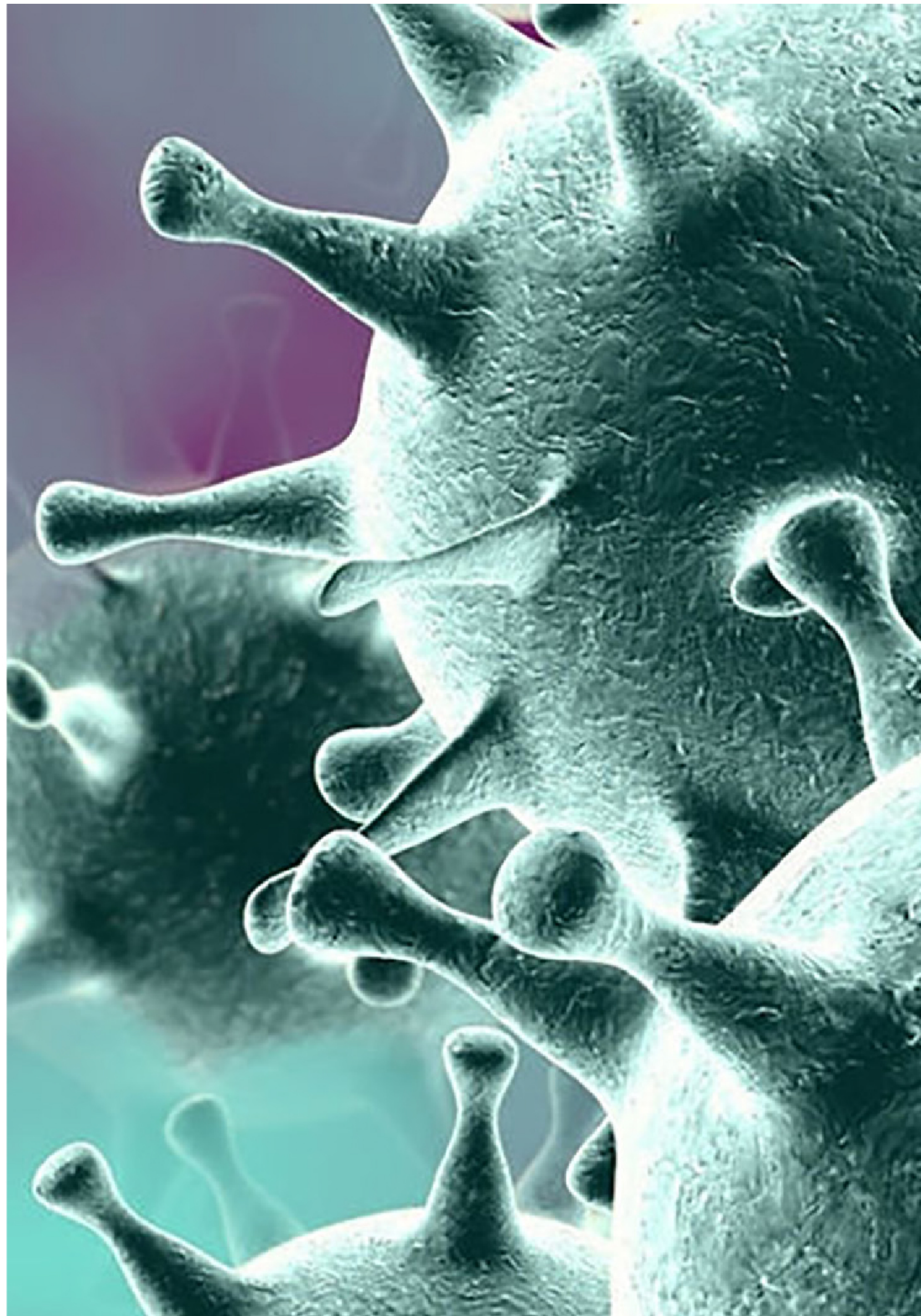


[Home](#) /

COVID-





OVERVIEW



DOCUMENTATIONS



SPECIAL REPORT



FAQ



Reduce Your Risk Of Infection

[Read more](#)



What to Do if You Are Sick

[Read more](#)



Self Isolation and Quarantine

Read more



Follow us:



Call our toll free number

If you believe to have had close contact with a confirmed case or contact with someone currently being evaluated for COVID-19, immediately notify us or your nearest health facility

Situation in numbers and new cases globally in last _____ hours as of _____ June

Confirmed (_____) new) deaths (_____) new)

Content source: WHO World Health Organization

Tracking COVID-19 : Cases globally as of _____ June



[Map of Cases Worldwide](#) (Johns Hopkins University)

Guidelines

- **Covid - Clinical Management Guideline**
[Eng](#)
- **Coronavirus Disease , National Preparedness and Response Plan**
[Eng](#)
- **Screening at Points of Entry (POE)**
[Eng](#)
- **List of Hospital Emergency Contacts**
[Eng](#)

Public notice

- **Information On Mandatory Quarantine On Entry Into Rwanda**
[Eng](#)
- **Announcement on enhanced COVID- prevention measures**
[Eng](#) | [Kin](#)
- **Public Notice on Coronavirus**
[Eng](#) | [Kin](#)
- **Public Notice from the Office of the Prime Minister**
[Eng](#) | [Fr](#) | [Kin](#)

Daily Updates

Coronavirus disease (COVID-)

Updated on Monday, June

Coronavirus disease (COVID-)

Updated on Friday, June

Coronavirus disease (COVID-)

Updated on Thursday, June

Weekly bulletin

Weekly Epidemiological bulletin

May, to May,

Weekly Epidemiological bulletin

May, to May,

Weekly Epidemiological bulletin

May, to May,

Copyright

© Rwanda Biomedical Center