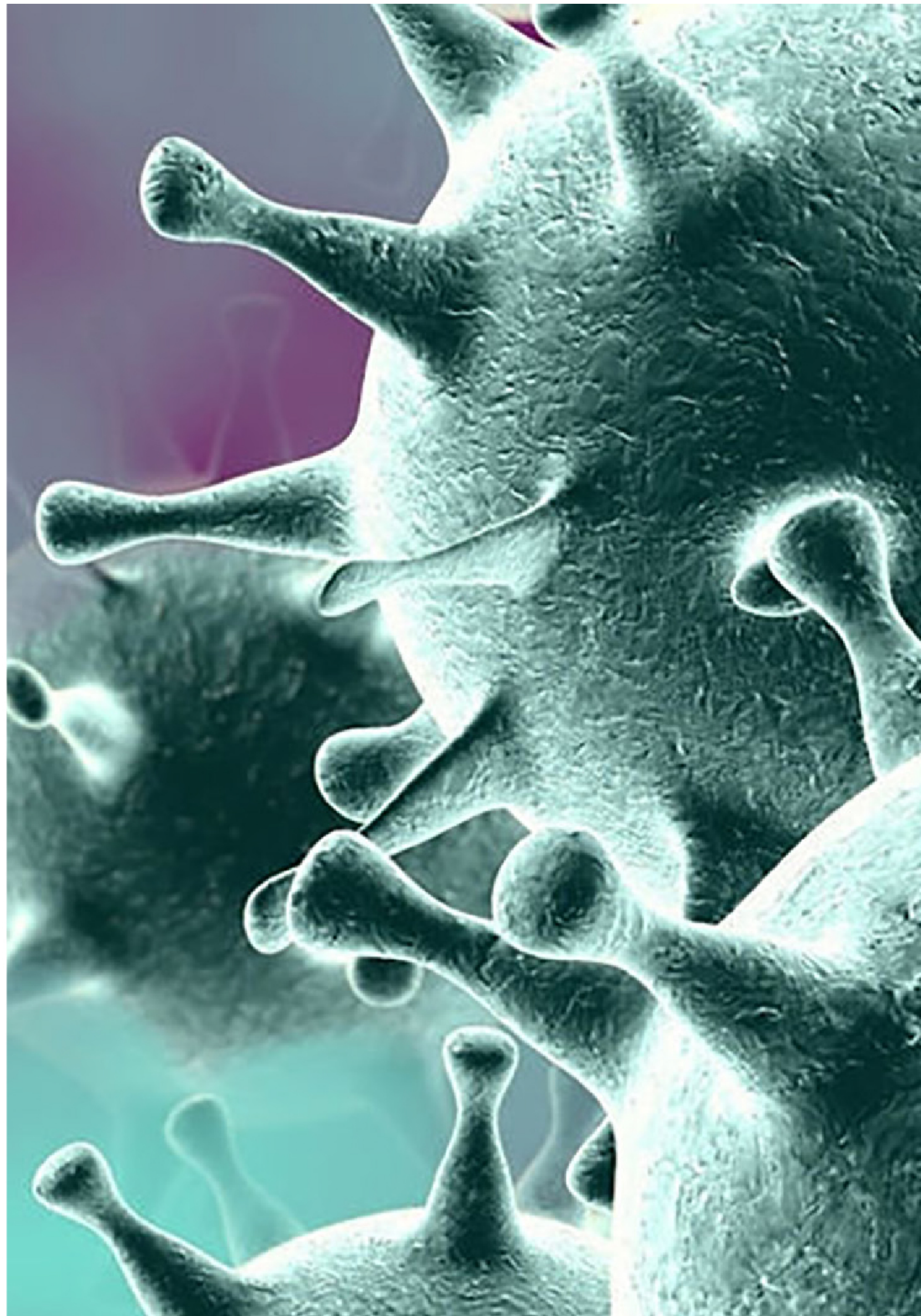


[Home](#) /

COVID-









OVERVIEW



DOCUMENTATIONS



SPECIAL REPORT



FAQ



# Reduce Your Risk Of Infection

[Read more](#)



# What to Do if You Are Sick

[Read more](#)



# Self Isolation and Quarantine

Read more



Follow us:



# Call our toll free number

If you believe to have had close contact with a confirmed case or contact with someone currently being evaluated for COVID-19, immediately notify us or your nearest health facility

## Situation in numbers and new cases globally in last \_\_\_\_\_ hours as of \_\_\_\_\_ June

Confirmed (\_\_\_\_\_) new) \_\_\_\_\_  
deaths (\_\_\_\_\_) new) \_\_\_\_\_

Content source: WHO World Health Organization

## Tracking COVID-19 : Cases globally as of \_\_\_\_\_ June



[Map of Cases Worldwide](#) (Johns Hopkins University)

## Guidelines

- **Covid - Clinical Management Guideline**  
[Eng](#)
- **Coronavirus Disease , National Preparedness and Response Plan**  
[Eng](#)
- **Screening at Points of Entry (POE)**  
[Eng](#)
- **List of Hospital Emergency Contacts**  
[Eng](#)

## Public notice

- **Information on Mandatory Quarantine on Entry Into Rwanda**  
[Eng](#)
- **Information On Mandatory Quarantine On Entry Into Rwanda**  
[Eng](#)
- **Announcement on enhanced COVID- prevention measures**  
[Eng](#) | [Kin](#)
- **Public Notice from the Office of the Prime Minister**  
[Eng](#) | [Fr](#) | [Kin](#)

## Daily Updates

### **Coronavirus disease (COVID- )**

Updated on Wednesday, June

---

### **Coronavirus disease (COVID- )**

Updated on Tuesday, June

---

### **Coronavirus disease (COVID- )**

Updated on Monday, June

## Weekly bulletin

### **Weekly Epidemiological bulletin**

June, to June,

---

### **Weekly Epidemiological bulletin**

May, to May,

---

### **Weekly Epidemiological bulletin**

May, to May,

Copyright

© Rwanda Biomedical Center