

Share :      | 

 Listen 

As of 23 March 2020, 12pm, the Ministry of Health (MOH) has confirmed 48 imported and six local cases of COVID-19 infection in Singapore. 8 more cases have been discharged from hospital.

Most in hospital are stable or improving. 14 are in the intensive care unit.

- **23 Mar 2020, 12pm**
 - 48 imported cases had travel history to Europe, North America and ASEAN. All except one were returning residents and Long Term Pass holders.
 - Six cases are currently unlinked, and contact tracing is ongoing.
- **22 Mar 2020, 12pm**
 - 18 imported cases had travel history to Europe, North America, South America and ASEAN. All except one were returning residents and Long Term Pass holders.
 - One (Case 443) is linked to the cluster at boulder+ Gym
 - Two are linked to previous cases (Case 442 is linked to Case 398; and Case 451 is linked to Case 404)
 - Two (Cases 434 and 450) are currently unlinked
- **21 Mar 2020, 12pm**
 - 39 imported cases had travel history to Australia, Europe, North America, ASEAN and other parts of Asia
 - 33 were returning residents and long-term pass holders
 - Six were short term visitors
 - Two are linked to previous cases (Case 388 is linked to Case 351; and Case 430 is linked to Case 350)
 - Six are currently unlinked (Cases 386, 395, 396, 398, 406 and 426).

- *21 Mar 2020, 11.30am*

Two patients have passed away from complications due to COVID-19 infection.

The first patient was a 75 year-old female Singapore Citizen. She was admitted to the National Centre for Infectious Diseases (NCID) on 23 February for pneumonia, and was confirmed to have COVID-19 infection on the same day. She had been cared for in the intensive care unit (ICU) since admission to NCID. She developed serious complications and eventually succumbed to the infection after 26 days in the ICU on 21 March at 7.52am. She had a history of chronic heart disease and hypertension.

The second patient was a 64 year-old male Indonesian national. He was admitted in critical condition to the ICU at NCID on 13 March, after arriving in Singapore from Indonesia on the same day, and was confirmed to have COVID-19 infection on 14 March. He had been cared for in the ICU since 13 March. He developed serious complications and eventually succumbed to the infection after nine days in the ICU on 21 March at 10.15am. Prior to his arrival in Singapore on 13 March, he had been hospitalised in Indonesia for pneumonia, and had a history of heart disease.

- *20 Mar 2020, 12pm*

- 30 had travel history to Europe, North America, ASEAN and other parts of Asia. All except one were returning residents and long-term pass holders.

- 7 are linked to previous cases

- 3 are currently unlinked

- *19 Mar 2020, 12pm*

- 24 cases are imported and had travel history to Europe, North America and ASEAN. All were returning residents and long-term pass holders.

- 1 is linked to the cluster at boulder+ Gym

- 1 is linked to previous cases

- 6 are currently unlinked

- *18 Mar 2020, 12pm*

- 33 are imported cases

- 2 cases are linked to the clusters at Church of Singapore (Bukit Timah) and boulder+ Gym

- 1 case is linked to the cluster at Masjid Al-Muttaqin

- 6 are linked to previous cases

- 5 are currently unlinked

- *17 Mar 2020, 12pm*

- Case 244 is an imported case involving a 53 year-old male Singapore Citizen who had been in Germany from 26 February to 29 February, Italy from 29 February to 7 March, and Switzerland from 7 March to 14 March. He is linked to Case 243.

- Case 245 is a 76 year-old male Singaporean Citizen with no recent travel history to affected countries and regions.

- Case 246 is an imported case involving a 39 year-old male Canadian national who had been in Japan from 23 February to 7 March.

- Case 247 is an imported case involving a 41 year-old male Singapore Citizen who had been in the United Kingdom from 5 March to 8 March, and again from 10 March to 12 March, and France from 8 March to 10 March.

- Case 248 is a 23 year-old female Malaysian national who is a Singapore Work Pass holder, and had been in Malaysia from 12 March to 13 March.

- Case 249 is an imported case involving a 42 year-old male Singapore Permanent Resident who had been in the United States from 4 March to 16 March.

- Case 250 is an imported case involving a 28 year-old male British national who is a Singapore Work Pass holder, and had been in the United Kingdom and Austria from 28 February to 15 March.

- Case 251 is a 59 year-old female Singapore Citizen with no recent travel history to affected countries and regions. She is a family member of Case 186 .

- Case 252 is a 66 year-old male Singapore Citizen, who had been in Malaysia from 25 February to 29 February.

- Case 253 is an imported case involving a 24 year-old male Singapore Citizen who had been in Spain from 12 February to 16 March.

- Case 254 is an imported case involving a 43 year-old female Singapore Permanent Resident who had been in France from 22 February to 13 March.

- Case 255 is an imported case involving a 44 year-old male Swedish national, who is a Singapore Work Pass holder, and had been in Norway, Denmark and Sweden from 1 March to 9 March. *(Discharged)*

- Case 256 is a 32 year-old female Filipino national who is a Singapore Work Pass holder, and has no recent travel history to affected countries and regions.

- Case 257 is a 19 year-old male French national, who is a Singapore Long Term Pass holder, and had been in the United Kingdom from 16 October 2019 to 14 March 2020.

- Case 258 is an imported case involving a 47 year-old male Indian national who had been in Europe from 9 February to 15 March.

- Case 259 is an imported case involving a 30 year-old female Singapore Citizen, who had been in the Philippines from 7 March to 9 March.

- Case 260 is a 48 year-old female Singapore Permanent Resident who has no recent travel history to affected countries and regions.

- Case 261 is an imported case involving a 30 year-old male American national, who had been in the United States from 23 February to 9 March, and France from 9 March to 15 March.

- Case 262 is an imported case involving a 20 year-old female Indonesian national, who had been in the United Kingdom from late January to 16 March.

- Case 263 is an imported case involving a 52 year-old female Singapore Citizen who was in Spain from 6 March to 8 March and again from 9 March to 14 March, and Portugal from 8 March to 9 March.

- Case 264 is an imported case involving a 41 year-old female Indonesian national who arrived in Singapore on 16 March.

- Case 265 is an imported case involving a 25 year-old female Singapore Citizen who had been in the United Kingdom from 6 March to 14 March.

- Case 266 is an imported case involving a 63 year-old male Singapore Citizen who had been in Spain from 6 March to 8 March and again from 9 March to 14 March, and Portugal from 8 March to 9 March.

• *16 Mar 2020, 12pm*

- Case 227 is a 53 year-old male Singapore Citizen who had been in France.

- Case 228 is a 67 year-old male Singapore Citizen with no recent travel history to affected countries and regions.

- Case 229 is an imported case involving a 26 year-old female Singapore Permanent Resident who had been in Spain,

who is a family member of Case 240.

- Case 230 is an imported case involving a 38 year-old female Singapore Citizen who had been in Eastern Europe.
- Case 231 is an imported case involving a 78 year-old male Australian national who had been in the United States.
- Case 232 is an imported case involving a 65 year-old female Australian national who had been in the United States.
- Case 233 is an imported case involving a 61 year-old male British national who had been in the United Kingdom.
- Case 234 is an 86 year-old male Singapore Citizen who has no recent travel history to affected countries and regions.
- Case 235 is a 31 year-old female Singapore Citizen with no recent travel history to affected countries and regions, and is linked to Case 208.
- Case 236 is a 30 year-old female Singapore Citizen with no recent travel history to affected countries and regions, and is a family member of Case 219 and is linked to Case 142.
- Case 237 is a 36 year-old female Indonesian national who has no recent travel history to affected countries and regions, and is linked to Case 225.
- Case 238 is an imported case involving a 83 year-old female Belgium national who arrived in Singapore on 6 March.
- Case 239 is an imported case involving a 28 year-old male British national who had been in France.
- Case 240 is an imported case involving a 27 year-old male, who had been in Spain from 7 March to 14 March, and is linked to Case 229.
- Case 241 is an imported case involving a 28 year-old male British national, who had been in France.
- Case 242 is a 64 year-old female Singapore Citizen who had been in Malaysia, and who is a contact of Case 166.
- Case 243 is an imported case involving a 36 year-old male Singapore Citizen who had been in Germany, Italy and Switzerland.

• *15 Mar 2020, 12pm*

- Case 213 is a 48 year-old male Singapore Citizen who had been in Indonesia.
- Case 214 is a 29 year-old male Singapore Citizen with no recent travel history to affected countries and region.
- Case 215 is an imported case involving a 65 year-old Singapore Citizen who had been in Thailand from 7 March to 10 March.
- Case 216 is an imported case involving a 30 year-old Singapore Citizen who had been in Germany from 28 February to 1 March, and again on 5 March to 6 March, and Czech Republic from 1 March to 5 March.
- Case 217 is an imported case involving a 22 year-old Spanish national who is a Singapore Long Term Visit Pass holder, and had been in Spain from 9 March to 13 March.
- Case 218 is a 55 year-old female Singapore Citizen with no recent travel history to affected countries and regions. She is linked to the cluster involving the private dinner function at SAFRA Jurong. (*Discharged*)
- Case 219 is a 30 year-old male Singapore Citizen with no recent travel history to affected countries and regions. He is linked to Case 142.
- Case 220 is an imported case involving a 53 year-old male Singapore Permanent Resident who had been in France from 10 March to 12 March.
- Case 221 is a 28 year-old female Filipina national who is a Singapore Work Pass holder, and has no recent travel history to affected countries and regions. She is a contact of Case 204.
- Case 222 is an imported case involving a 41 year-old male French national who is a Singapore Work Pass holder, and had been to France from 28 February to 7 March and 9 March to 10 March, Spain from 7 March to 9 March, and the Philippines from 12 March to 13 March.
- Case 223 is an imported case involving a 60 year-old male Singapore Citizen, and had been in the United States from 28 February to 7 March and Australia from 7 to 13 March.

- Case 224 is a 50 year-old male Singapore Citizen, who had been in Malaysia from 1 March to 4 March. He is a contact of Case 117 and is linked to the cluster involving the private dinner function at SAFRA Jurong.

- Case 225 is an imported case involving a 63 year-old male Singapore Citizen, who had been in Indonesia from 3 March to 7 March.

- Case 226 is an imported case involving a 49 year-old male Dutch national.

• *14 Mar 2020, 12pm*

- Case 201 is a 52 year-old female Singapore Citizen with no recent travel history to affected countries and region. *(Discharged)*

- Case 202 is an imported case involving a 44 year-old male Singapore Citizen who had been in Malaysia from 28 February to 3 March.

- Case 203 is likely to be an imported case involving a 36 year-old female Singapore Citizen who had been in Indonesia from 6 March to 8 March.

- Case 204 is an imported case involving a 32 year-old male American national who is a Singapore Work Pass holder, and had been in Japan from 29 February to 8 March.

- Case 205 is an imported case involving a 30 year-old female Filipino national who is a Singapore Long Term Visit Pass holder, and had been in the Philippines from 27 February to 6 March.

- Case 206 is an imported case involving a 33 year-old female New Zealand national who is a Singapore Long Term Visit Pass holder, and had been to the United States from 28 February to 13 March.

- Case 207 is an imported case involving a 40 year-old female Singapore Citizen who had been in the United Kingdom from 6 March to 11 March.

- Case 208 is a 26 year-old female Singapore Citizen who has no recent travel history to affected countries and regions.

- Case 209 is an imported case involving a 32 year-old female Singapore Citizen who had been in the United States from 2 March to 7 March.

- Case 210 is an imported case involving a 56 year-old male German national who is a Singapore Long Term Visit Pass holder, and had been in Germany from 27 February to 3 March, and again from 11 March to 12 March, and Switzerland from 3 March to 10 March.

- Case 211 is a 35 year-old female Filipino national who is a Singapore Long Term Visit Pass holder.

- Case 212 is an imported case involving a 64 year-old male Indonesian national. He was confirmed to have COVID-19 infection on 14 March morning, and is currently warded in an isolation room at NCID.

• *13 Mar 2020, 12pm*

- Case 188 is likely to be an imported case involving a 53-year-old male Singapore Citizen who had been in Thailand from 23 February to 1 March.

- Case 189 is likely to be an imported case involving a 36 year-old male Indian national who is a Singapore Work Pass holder, and had been in India from 21 February to 1 March.

- Case 190 is a 53 year-old male Singapore Citizen who has no recent travel history to affected countries and regions. He is linked to Case 172.

- Case 191 is likely to be an imported case involving a 24 year-old female Malaysian national who is a Singapore Work Pass holder, and had been in Germany from 24 February to 28 February, and Malaysia from 28 February to 3 March.

- Case 192 is an imported case involving a 32 year-old male American national who arrived in Singapore on 10 March from the US.

- Case 193 is an imported case involving a 26 year-old male Malaysian national who is a Singapore Work Pass holder, and had been in Germany from 1 March to 3 March, Czech Republic from 4 March to 6 March, Austria from 7 March to 8 March, and Hungary from 9 March to 10 March. He is linked to Case 194.

- Case 194 is an imported case involving a 24 year-old female Chinese national who is a Singapore Work Pass holder, and had been in Germany from 1 March to 3 March, Czech Republic from 4 March to 6 March, Austria from 7 March to 8 March, and Hungary from 9 March to 10 March. She is linked to Case 193.

- Case 195 is an imported case involving a 47 year-old male Singapore Citizen who had been in the United States from 4 February to 17 February, and Canada from 17 February to 9 March.

- Case 196 is a 73-year-old female Singapore Citizen with no recent travel history to affected countries and regions. She is a contact of Cases 107 and 148 and is linked to the cluster involving the private dinner function at SAFRA Jurong.

- Case 197 is an imported case involving a 30-year-old male Singapore Citizen who had been in Malaysia from 28 February to 2 March.

- Case 198 is a 61 year-old female Singapore Citizen who has no recent travel history to affected countries and regions. *(Discharged)*

- Case 199 is an imported case involving a 37-year-old male Singapore Citizen who had been in Malaysia from 26 February to 2 March. *(Discharged)*

- Case 200 is a 62-year-old female Singapore Citizen with who has no recent travel history to affected countries and regions. She is a family member of Case 165.

- *12 Mar 2020, 12pm*

- Case 179 is a 66 year-old female Singapore Citizen who had been in Malaysia on 22 February. She is a contact of Case 121 and is linked to the SAFRA Jurong cluster. *(Discharged)*

- Case 180 is an imported case involving a 71 year-old male Singapore Citizen who had been in the US from 27 February to 10 March.

- Case 181 is an imported case involving a 83 year-old male Indonesian national who had arrived in Singapore on 9 March. He is a family member of Case 182.

- Case 182 is an imported case involving a 76 year-old female Indonesian national who arrived in Singapore on 9 March. She is a family member of case 181.

- Case 183 is a 29 year-old male Singapore citizen who had been in Malaysia from 29 February to 4 March. He had attended a mass religious gathering at a mosque in Malaysia, and the Malaysian authorities had subsequently reported several confirmed COVID-19 cases linked to the event.

- Case 184 is a 35 year-old male Philippines national who is a Singapore Work Pass holder, and had been in the Philippines from 24 February to 1 March. He is linked to Case 172.

- Case 185 is a 34 year-old male Singapore citizen who had been in Malaysia from 22 February to 23 February. He is linked to case 142.

- Case 186 is a 64 year-old male Singapore citizen who has no recent travel history to affected countries and regions. He is linked to Case 166. *(Discharged)*

- Case 187 is a 48 year-old male Singaporean citizen who had been in Malaysia from 28 February to 2 March. He attended the mass religious gathering at the mosque in Malaysia.

- *11 Mar 2020, 12pm*

- Case 167 is a 35 year-old female Filipino national who is a Singapore Work Pass holder, and is linked to Case 178. She had been in the Philippines from 11 February to 17 February.

- Case 168 is a 47 year-old male Singapore Citizen who has no recent travel history to affected countries and regions. *(Discharged)*
 - Case 169 is a 40 year-old male Singapore Citizen, a Republic of Singapore Air Force serviceman who had been in France on official duty. He is a contact of Cases 165, 173 and 175.
 - Case 170 is an imported case involving a 56 year-old female Indonesian national who had arrived in Singapore on 9 March. She is linked to case 152.
 - Case 171 is an imported case involving a 27 year-old male Singapore Citizen who had been in France from 25 February to 1 March, and Spain from 1 March to 6 March.
 - Case 172 is a 42 year-old female Philippines national who is a Singapore Work Pass Holder. She was in the Philippines from 27 February to 2 March.
 - Case 173 is a 31 year-old male Singapore Citizen, a Republic of Singapore Air Force serviceman who had been in France from 15 February to 7 March on official duty. He is a contact of Cases 165, 169 and 175.
 - Case 174 is a 67 year-old female Singapore Citizen who has no recent travel history to affected countries and regions. She is linked to the cluster at SAFRA Jurong. *(Discharged)*
 - Case 175 is an imported case of a 44 year-old male Singapore Citizen, a Republic of Singapore Air Force serviceman a who had been in France from 15 February to 7 March on official duty. He is a contact of Cases 165, 169 and 173.
 - Case 176 is an imported case involving a 37 year-old female British national who had been in Japan from 24 February to 4 March, and the UK from 4 March to 8 March.
 - Case 177 is an imported case involving a 26 year-old male Singapore Citizen who had been in the US from 14 February to 24 February, the UK from 28 February to 1 March, and France from 2 March to 7 March.
 - Case 178 is a 37 year-old male Filipino national who is a Singapore Work Pass holder. He had been in the Philippines from 11 February to 19 February, and again from 23 February to 2 March to visit a relative with pneumonia who has since passed on. He is linked to case 167.
- *10 Mar 2020, 12pm*
 - Case 161 is a 73 year-old male Singapore Citizen who is a family member of Case 107, and is linked to the cluster involving the private dinner function at SAFRA Jurong
 - Case 162 is a 28 year-old male Singapore Citizen who had been in Indonesia from 29 February to 2 March. He is linked to Case 142.
 - Case 163 is a 27 year-old female Singapore Citizen who is linked to Case 142.
 - Case 164 is a 57 year-old female Permanent Resident. She is a contact of Case 134, and is linked to the cluster involving the private dinner function at SAFRA Jurong.
 - Case 165 is a 30 year-old male Singapore Citizen who had been in France from 15 February to 7 March.
 - Case 166 is a 55 year-old female Singapore Citizen. She is a contact of Case 134, and is linked to the cluster involving the private dinner function at SAFRA Jurong.
- *9 Mar 2020, 12pm*
 - Case 151 is a 51 year-old male Singapore Citizen who has no recent travel history to affected countries and regions. He is a contact of Cases 66 and 91, and is linked to the cluster at The Life Church and Missions Singapore.
 - Case 152 is an imported case involving a 65 year-old male Indonesian national who arrived in Singapore on 7 March.
 - Case 153 is likely to be an imported case involving a 65 year-old female Singapore Citizen who had been in Indonesia from 25 February to 28 February.
 - Case 154 is an imported case involving a 52 year-old male British national. He arrived in Singapore on 6 March.
 - Case 156 is a 50 year-old female Singapore Permanent Resident who has no recent travel history to affected countries

and regions. She is linked to the cluster involving the private dinner function at SAFRA Jurong.

- Case 157 is a 54 year-old female Singapore Permanent Resident who has no recent travel history to affected countries and regions. She is linked to the cluster involving the private dinner function at SAFRA Jurong.

- Case 158 is a 53 year-old female Singapore Citizen who has no recent travel history to affected countries and regions. She is linked to the cluster involving the private dinner function at SAFRA Jurong.

- Case 159 is a 59 year-old male Singapore Citizen who has no recent travel history to affected countries and regions. He is linked to the cluster involving the private dinner function at SAFRA Jurong.

- Case 160 is a five year-old male Singapore Citizen who has no recent travel history to affected countries and regions. He is a family member of Case 145, and is linked to the cluster involving the private dinner function at SAFRA Jurong.

- *8 Mar 2020, 12pm*

- Case 139 is a 71 year-old male Singapore Citizen who has no recent travel history to affected countries and regions. He is a family member of Cases 140 and 142, and is linked to the cluster involving the private dinner function at SAFRA Jurong.

- Case 140 is a 62 year-old female Singapore Citizen who has no recent travel history to affected countries and regions. She is a family member of Cases 139 and 142, and is linked to the cluster involving the private dinner function at SAFRA Jurong.

- Case 141 is a 69 year-old male Singapore Citizen who has no recent travel history to affected countries and regions.

- Case 142 is a 26 year-old male Singapore Citizen who has no recent travel history to affected countries and regions. He is a family member of Cases 139 and 140, and is linked to the cluster involving the private dinner function at SAFRA Jurong.

- Case 143 is a 42 year-old male Singapore Permanent Resident who had been in Thailand from 4 March to 6 March. He is a family member of Case 132. *(Discharged)*

- Case 144 is a 58 year-old female Singapore Citizen who has no recent travel history to affected countries and regions. She is a contact of Case 140, and is linked to the cluster involving the private dinner function at SAFRA Jurong. *(Discharged)*

- Case 145 is a 67 year-old female Singapore Citizen who has no recent travel history to affected countries and regions. She is a contact of Cases 107 and 134, and is linked to the cluster involving the private dinner function at SAFRA Jurong.

- Case 146 is a 64 year-old female Singapore Citizen who has no recent travel history to affected countries and regions. She is a contact of Case 134, and is linked to the cluster involving the private dinner function at SAFRA Jurong.

- Case 147 is an imported case involving a 64 year-old male Indonesian national who arrived in Singapore on 7 March.

- Case 148 is a 67 year-old female Singapore Citizen who had been in Indonesia from 11 February to 14 February. She is a contact of Case 107, and is linked to the cluster involving the private dinner function at SAFRA Jurong.

- Case 149 is a 62 year-old male Singapore Citizen who has no recent travel history to affected countries and regions. He is linked to the cluster involving the private dinner function at SAFRA Jurong.

- Case 150 is a 53 year-old female Singapore Permanent Resident who has no recent travel history to affected countries and regions. She is a contact of Cases 115 and 134, and is linked to the cluster involving the private dinner function at SAFRA Jurong.

- *7 Mar 2020, 12pm*

- Case 131 is a 66 year-old male Singapore Citizen is linked to the cluster involving the private dinner function at SAFRA Jurong.

- Case 132 is likely to be an imported case involving a 37 year-old female Singapore Permanent Resident who had been in London from 23 February to 27 February.

- Case 133 is a 62 year-old female Indonesian national who is a Singapore Social Visit Pass holder, and who has no recent travel history to affected countries and regions. *(Discharged)*

- Case 134 is a 56 year-old female Singapore Citizen who has no recent travel history to affected countries and regions, but had been in Malaysia on 21 February. She is linked to the cluster involving the private dinner function at SAFRA Jurong. *(Discharged)*

-Case 135 is a 40 year-old male Singapore Citizen who has no recent travel history to affected countries and regions.

- Case 136 is likely to be an imported case involving a 36 year-old male Italian national Singapore Work Pass holder who had recently travelled to the US from 7 February to 22 February, and to Italy from 23 February to 29 February. *(Discharged)*

- Case 137 is a 60 year-old male Singapore Citizen who is linked to the cluster involving the private dinner function at SAFRA Jurong. *(Discharged)*

- Case 138 is a 26 year-old male Singapore Citizen. He is a close contact of Case 66 and family member of Case 83, and is linked to the cluster at The Life Church and Missions Singapore.

- *6 Mar 2020, 12pm*

- Case 118 is a 33-year-old female Singapore Citizen who has no recent travel history to affected countries and regions. She is a family member of Cases 114 and 115, and is linked to the cluster involving the private dinner function at SAFRA Jurong. *(Discharged)*

- Case 119 is a 55 year-old male Singapore Citizen who has no recent travel history to affected countries and regions. He is employed by SingTel but had not gone to work since onset of symptoms. *(Discharged)*

- Case 120 is a 62 year-old female Singapore Citizen who has no recent travel history to affected countries and regions. She is linked to the cluster involving the private dinner function at SAFRA Jurong.

- Case 121 is a 54 year-old female Singapore Citizen who has no recent travel history to affected countries and regions. She is linked to the cluster involving the private dinner function at SAFRA Jurong. *(Discharged)*

- Case 122 is a 64 year-old female Singapore Citizen who has no recent travel history to affected countries and regions. She is a close contact of Case 117, and is linked to the cluster involving the private dinner function at SAFRA Jurong.

- Case 123 is likely an imported case involving a 47-year-old male Singapore Citizen who had been in South Africa from 14 to 17 Feb and France from 22 to 24 Feb.

- Case 124 is likely an imported case involving a 37 year-old female Singapore Permanent Resident who had been in Germany from 27 Feb to 5 Mar.

- Case 125 is a 65 year-old female Singapore Citizen who has no recent travel history to affected countries and regions. She is a family member of Case 128, and is linked to the cluster involving a private dinner function at SAFRA Jurong. *(Discharged)*

- Case 126 is a 77 year-old male Singapore Citizen who has no recent travel history to affected countries and regions.

- Case 127 is a 64 year-old female Singapore Citizen who has no recent travel history to affected countries and regions. She is a close contact of Case 117, and is linked to the cluster involving a private dinner function at SAFRA Jurong.

- Case 128 is a 70 year-old male Singapore Citizen who has no recent travel history to affected countries and regions. He is a family member of Case 125, and is linked to the cluster involving a private dinner function at SAFRA Jurong.

- Case 129 is a 68 year-old female Singapore Citizen who has no recent travel history to affected countries and regions. She is a family member of case 130, and is linked to the cluster involving a private dinner function at SAFRA Jurong.

- Case 130 is a 66 year-old male Singapore Citizen who has no recent travel history to affected countries and regions. He is linked to the cluster involving the private dinner function at SAFRA Jurong.

- *5 Mar 2020, 12pm*

- Case 113 is a 42 year-old male French national who is a Singapore Work Pass holder, who has no recent travel history

to affected countries and regions, but had been in France, Portugal and the UK.

- Case 114 is a 62 year-old male Singapore Citizen who has no recent travel history to affected countries and regions. He is a family member of Case 115, and is linked to the cluster involving a private dinner function at SAFRA Jurong. *(Discharged)*

- Case 115 is a 62 year-old female Singapore Citizen who has no recent travel history to affected countries and regions. She is a family member of Case 114, and is linked to the cluster involving a private dinner function at SAFRA Jurong.

- Case 116 is a 50 year-old female Singapore Citizen who has no recent travel history to affected countries and regions. She is linked to the cluster involving a private dinner function at SAFRA Jurong. *(Discharged)*

- Case 117 is a 52 year-old female Singapore Citizen who has no recent travel history to affected countries and regions, but had been in Malaysia. She is linked to the cluster involving a private dinner function at SAFRA Jurong.

- *4 Mar 2020, 12pm*

- Case 111 is a 43 year-old male Singapore Permanent Resident who has no recent travel history to affected countries and regions, but had been in Malaysia.

- Case 112 is a 62 year-old female Singapore Citizen who has no recent travel history to affected countries and regions. She is linked to Case 94.

- *3 Mar 2020, 12pm*

- Case 109 is a 70 year-old male Singapore Citizen who has no recent travel history to affected countries and regions.

- Case 110 is a 33 year-old male Singapore Citizen who has no recent travel history to affected countries and regions. He is linked to the cluster at Wizlearn Technologies Pte Ltd.

- *2 Mar 2020, 12pm*

- Case 107 is a 68 year-old female Singapore Citizen who has no recent travel history to China, Daegu and Cheongdo but had been in Jakarta, Indonesia. She is linked to Case 94.

- Case 108 is a 34 year-old female Filipino national who is a Singapore Work Pass holder, and has no recent travel history to China, Daegu and Cheongdo. She is a foreign domestic worker employed by Case 101, and works in the same household as Case 102. *(Discharged)*

VIEW CASES BY WEEK

| **Week 6: 24 Feb - 1**

Mar

| **Week 5: 17 Feb - 23**

Feb

| **Week 4: 10 Feb - 16**

Feb

| **Week 3: 3 Feb - 9**

Feb

| **Week 2: 27 Jan - 2**

Feb

| **Week 1: 23 Jan to 26**

Jan

Week 6: 24 Feb - 1 Mar

1 Mar 2020



Case 106

- 54 year-old male Japanese national, Singapore Work Pass holder
- No recent travel history to China, Daegu and Cheongdo



Case 105 *(Discharged)*

- 49 year-old male Singapore Citizen
- No recent travel history to China, Daegu and Cheongdo
- Linked to the cluster at Wizlearn Technologies Pte Ltd



Case 104 *(Discharged)*

- 25 year-old female Myanmar national
- No recent travel history to China, Daegu and Cheongdo, but had been in Batam
- Foreign domestic worker employed by Case 103



Case 103

- 37 year-old female Singapore Citizen
- No recent travel history to China, Daegu and Cheongdo, but had been in Batam
- Family member of Case 93 and is linked to Case 101

29 Feb 2020



Case 102

- 41 year-old female Filipino national, Singapore Work Pass holder
- No recent travel history to China, Daegu and Cheongdo
- Case 101's foreign domestic worker



Case 101 (Discharged)

- 61 year-old male Singapore Citizen
- No recent travel history to China, Daegu and Cheongdo
- Linked to Case 93



Case 100

- 20 year-old male Malaysian national
- No recent travel history to China, Daegu and Cheongdo
- Linked to the cluster at Wizlearn Technologies Pte Ltd



Case 99

- 27 year-old male Singapore Citizen
- No recent travel history to China, Daegu and Cheongdo
- Linked to the cluster at Wizlearn Technologies Pte Ltd

28 Feb 2020, 12pm



Case 98 (Discharged)

- 24 year-old male Singapore Permanent Resident
- No recent travel history to China, Daegu and Cheongdo
- Linked to Cases 93, 95 and 97



Case 97 (Discharged)

- 44 year-old female Singapore Permanent Resident
- No recent travel history to China, Daegu and Cheongdo
- Linked to Cases 93 and 95

27 Feb 2020



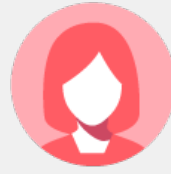
Case 96 (*Discharged*)

- 12 year-old male Singapore Citizen
- No recent travel history to China, Daegu and Cheongdo
- Student at Raffles Institution
- Linked to Case 94



Case 95

- 44 year-old male Singapore Citizen
- No recent travel history to China, Daegu and Cheongdo
- Linked to Case 93



Case 94

- 64 year-old female Singapore Citizen
- No recent travel history to China, Daegu and Cheongdo

26 Feb 2020, 12pm



Case 93 (*Discharged*)

- 38 year-old male Singapore Citizen
- No recent travel history to China



Case 92

- 47 year-old male Singapore Citizen
- No recent travel history to China

25 Feb 2020



Case 91

- 58 year-old female Singapore Citizen
- No recent travel history to China
- Linked to Case 66.

24 Feb 2020



Case 90

- 75 year-old female
- No recent travel history to China
- Linked to the cluster at The Life Church and Missions Singapore.

Week 5: 17 Feb - 23 Feb

22 Feb 2020



Case 89

- 41 year-old male
Singapore Permanent Resident
- No recent travel history to China



Case 88

- 30 year-old female
Singapore Citizen
- No recent travel history to China



Case 87 (Discharged)

- 32 year-old male
Singapore Citizen
- Among the group of Singaporeans who were evacuated from Wuhan on 9 Feb

21 Feb 2020



Case 86 (Discharged)

- 27 year-old male
Singapore Citizen
- No recent travel history to China

20 Feb 2020



Case 85 (*Discharged*)

- 36 year-old male Chinese national who is a Singapore Work Pass holder
- No recent travel history to China

19 Feb 2020



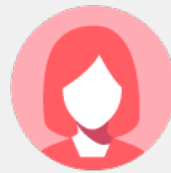
Case 84 (*Discharged*)

- 35 year-old female Singapore Citizen
- No recent travel history to China
- Linked to Case 66



Case 83 (*Discharged*)

- 54 year-old male Singapore Citizen
- No recent travel history to China
- Travel frequently to Malaysia for work purposes



Case 82

- 57 year-old female Singapore Citizen
- No recent travel history to China
- Was admitted as a dengue patient in general ward

18 Feb 2020



Case 81 *(Discharged)*

- 50 year-old male Singapore Citizen
- No recent travel history to China
- Linked to the cluster at Grace Assembly of God



Case 80 *(Discharged)*

- 38 year-old female Singapore Citizen
- No recent travel history to China
- Linked to Case 66



Case 79

- 35 year-old female Malaysia national who is a Singapore Work Pass Holder
- No recent travel history to China
- Family member of Case 72



Case 78 *(Discharged)*

- 57 year-old female Singapore Citizen
- No recent travel history to China
- Linked to the cluster at Grace Assembly of God

17 Feb 2020, 12pm



Case 77 *(Discharged)*




- 35 year-old male Singapore Citizen
- No recent travel history to China
- Contact of Case 50



Case 76 *(Discharged)*

- 1 year-old male Singapore Citizen
- Among the group of Singaporeans who were evacuated from Wuhan on 9 Feb
- He was without symptoms when he boarded the flight, and was put under quarantine upon landing in Singapore

Week 4: 10 Feb - 16 Feb

16 Feb 2020, 12pm		
		
Case 75 <ul style="list-style-type: none">• 71 year-old female Singapore Citizen• No recent travel history to China• Family member of Case 41 and had been under quarantine since 7 Feb	Case 74 (Discharged) <ul style="list-style-type: none">• 29 year-old male Singapore Citizen• No recent travel history to China• Linked to the cluster at Grace Assembly of God	Case 73 (Discharged) <ul style="list-style-type: none">• 43 year-old male Singapore Citizen• No recent travel history to China• Linked to the cluster at Grace Assembly of God, and was served a Home Quarantine Order as he is a close contact of Case 51

15 Feb 2020, 12pm



Case 72 *(Discharged)*

- 40 year-old male Chinese national who is a Singapore Work Pass holder
- No recent travel history to China
- Non-medical contact of Case 59.



Case 71 *(Discharged)*

- 25 year-old male Singapore Citizen
- No recent travel history to China
- Contact of Case 66



Case 70 *(Discharged)*

- 27 year-old female Singapore Citizen
- No recent travel history to China
- Family member of Case 66



Case 69

- 26 year-old Bangladesh national who is a Singapore Work Pass holder
- No recent travel history to China
- Linked to the cluster at Seletar Aerospace Heights construction site



Case 68

- 79 year-old female Singapore Citizen
- No recent travel history to China
- Family member of Case 66

14 Feb 2020, 12pm



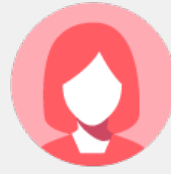
Case 67

- 56 year-old male Singapore Citizen
- No recent travel history to China
- Linked to the cluster at Grace Assembly of God
- Family member of Case 61



Case 66 *(Discharged)*

- 28 year-old male Singapore Citizen
- No recent travel history to China
- Linked to the cluster at Grace Assembly of God



Case 65 *(Discharged)*

- 61 year-old female Singapore Citizen
- No recent travel history to China
- Family member of Case 50 and Case 55



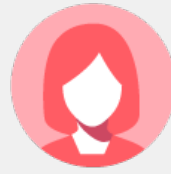
Case 64 *(Discharged)*

- 50 year-old female Singapore Citizen
- No recent travel history to China



Case 63 *(Discharged)*

- 54 year-old female Singapore Citizen
- No recent travel history to China
- Linked to the cluster at Grace Assembly of God



Case 62 *(Discharged)*

- 44 year-old female Singapore Citizen
- No recent travel history to China
- Linked to the cluster at Grace Assembly of God
- Mostly stayed at home, except to seek medical treatment



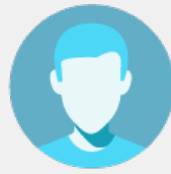
Case 61 *(Discharged)*

- 57 year-old female Singapore Citizen
- No recent travel history to China
- Linked to the cluster at Grace Assembly of God
- Mostly stayed at home, except to go to work for a day



Case 60

- 51 year-old female Singapore Citizen
- No recent travel history to China
- Linked to the cluster at Grace Assembly of God
- Mostly stayed at her home and went to work at Grace Assembly of God (Tanglin)



Case 59 *(Discharged)*

- 61 year-old male Singapore Citizen
- No recent travel history to China
- Works at a private hospital in Singapore

13 Feb 2020, 12pm



Case 58 *(Discharged)*

- 55 year-old male Singapore Citizen
- No recent travel history to China
- Linked to the cluster at Grace Assembly of God



Case 57 *(Discharged)*

- 26 year-old male Singapore Citizen
- No recent travel history to China
- Linked to the cluster at Grace Assembly of God



Case 56 *(Discharged)*

- 30 year-old male Bangladesh national
- No recent travel history to China
- Linked to the cluster at the Seletar Aerospace Heights construction site



Case 55 *(Discharged)*

- 30 year-old male Singapore Citizen
- No recent travel history to China
- Family member of Case 50



Case 54

- 54 year-old female Singapore Citizen
- No recent travel history to China
- Linked to the cluster at Grace Assembly of God



Case 53

- 54 year-old male Singapore Citizen
- No recent travel history to China
- Linked to the cluster at Grace Assembly of God
- Mostly stayed at home at Hillview Avenue
- Works at the National University of Singapore, but had not interacted with colleagues and students after onset of symptoms



Case 52

- 37 year-old male Bangladesh national, Singapore Work Pass holder
- No recent travel history to China
- Linked to the cluster at Seletar Aerospace Heights construction



Case 51 *(Discharged)*

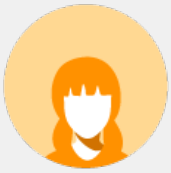
- 48 year-old male Singapore Citizen
- No recent travel history to China
- Linked to the cluster at Grace Assembly of God
- Went to work at Grace Assembly of God (Tanglin) and Grace

Heights construction site	(Tanglin) and Grace Assembly of God (Bukit Batok)	
---------------------------	---	--

12 Feb 2020, 12pm		
		
<p>Case 50 (Discharged)</p> <ul style="list-style-type: none"> • 62 year-old male Singapore Citizen • No recent travel history to China • Went to work at DBS Asia Central at Marina Bay Financial Centre 	<p>Case 49 (Discharged)</p> <ul style="list-style-type: none"> • 46 year-old male Singapore Citizen • No recent travel history to China • Went to work at Grace Assembly of God (Tanglin) and Grace Assembly of God (Bukit Batok) 	<p>Case 48 (Discharged)</p> <ul style="list-style-type: none"> • 34 year-old male Singapore Citizen • No recent travel history to China but was in Malaysia on 26 Jan • Went to work at Grace Assembly of God (Tanglin) (355 Tanglin Road) and Grace Assembly of God (Bukit Batok)

11 Feb 2020, 12pm	
	
<p>Case 47 (Discharged)</p> <ul style="list-style-type: none"> • 39 year-old Bangladesh national, Singapore Work Pass Holder • No recent travel history to China 	<p>Case 46 (Discharged)</p> <ul style="list-style-type: none"> • 35 year-old male Singapore Permanent Resident • No recent travel history to China • Lives in Johor Bahru and works in Singapore • Prior to hospital admission, went to work at Resorts World Sentosa Casino

10 Feb 2020, 12pm



Case 45 *(Discharged)*

- Two year-old female Singapore Citizen
- Evacuated from Wuhan on 30 Jan
- She was without symptoms when she boarded the flight, and was placed under quarantine upon landing in Singapore

Case 44 *(Discharged)*

- 37 year-old male Singapore Citizen
- No recent travel history to China
- Prior to hospital admission, went to work at Certis Cisco Centre (20 Jalan Affi), and had been on duty at Chingay 2020
- Prior to onset of symptoms, served Quarantine Orders on two individuals from Wuhan who were subsequently tested positive for COVID-19

Week 3: 3 Feb - 9 Feb

9 Feb, 12pm



Case 43 *(Discharged)*

- 54 year-old male Singapore Citizen
- No recent travel history to China
- Was in Malaysia on 26 Jan

Case 42







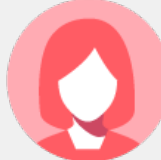
- 39 year-old male Bangladesh national, Singapore Work Pass holder
- No recent travel history to China
- For the actions taken by the Ministry of Manpower following the confirmation of this case, read more [here](#)

Case 41

- 71 year-old male Singapore Citizen
- No recent travel history to China

8 Feb, 12pm



		
<p>Case 40 <i>(Discharged)</i></p> <ul style="list-style-type: none"> • 36 year-old male Singapore Citizen • No recent travel history to China • Had been placed under home quarantine as he works at Yong Thai Hang, and was identified to be a close contact of Cases 19 and 20 	<p>Case 39 <i>(Discharged)</i></p> <ul style="list-style-type: none"> • 51 year-old male Singapore Citizen • No recent travel history to China, but had travelled to Malaysia • Attended the same business meeting as Cases 30 and 36 at Grand Hyatt Singapore from 20 to 22 Jan 	<p>Case 38 <i>(Discharged)</i></p> <ul style="list-style-type: none"> • 52 year-old female Singapore Citizen • No recent travel history to China • Visited The Life Church and Missions Singapore, and had travelled by public transport to other locations
		
<p>Case 37</p> <ul style="list-style-type: none"> • 53 year-old male Singapore Citizen • No recent travel history to China • Worked as a private hire car driver, and had visited two GP clinics after reporting onset of symptoms 	<p>Case 36 <i>(Discharged)</i></p> <ul style="list-style-type: none"> • 38 year-old female Singapore Permanent Resident • No recent travel history to China, but had travelled to Johor Bahru • Attended the same business meeting as Cases 30 and 39 at Grand Hyatt Singapore from 20 to 22 Jan 	<p>Case 35</p> <ul style="list-style-type: none"> • 64 year-old male Singapore Citizen • No recent travel history to China • Worked as a taxi driver and largely stayed at home after onset of symptoms
		
<p>Case 34 <i>(Discharged)</i></p> <ul style="list-style-type: none"> • 40 year-old female Singapore Citizen • No recent travel history to China • She had been placed under home quarantine as she works at Yong Thai Hang, and was identified as a close contact of Cases 19 and 20 		

7 Feb, 2pm



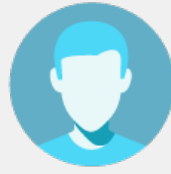
Case 33 *(Discharged)*

- 39 year-old female Singapore Citizen
- No travel history to Mainland China, but had been in Malaysia from 22 to 29 Jan



Case 32 *(Discharged)*

- 42 year-old female Singapore Citizen
- Prior to hospital admission, she worked at Victoria Junior College, but had not interacted with her colleagues and students after onset of symptoms



Case 31 *(Discharged)*

- 53 year-old male Singapore Citizen
- No travel history to Mainland China, but had been in Malaysia in Jan
- Prior to hospital admission, he had been to The Life Church and Missions Singapore, and had gone visiting during Chinese New Year

6 Feb 2020, 2pm



Case 30 *(Discharged)*

- 27 year-old male Singapore Citizen
- No recent travel history to mainland China
- Attended a private business meeting at Grand Hyatt Singapore from 20 to 22 Jan, which included confirmed cases from Malaysia and South Korea



Case 29 *(Discharged)*

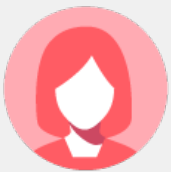
- 41 year-old male Singapore Citizen
- No recent travel history to mainland China
- Developed a fever on 28 Jan, visited a general practitioner (GP) clinic the next day, sought treatment at another GP clinic on 30 Jan, before being admitted to Mount Elizabeth Novena Hospital on 3 Feb

5 Feb 2020, 2pm



Case 28 & 27 *(Both discharged)*

- Family members of Case 19
- No recent travel history to China
- Case 27 is a 45 year-old male Singapore Citizen who is the husband of Case 19
- Case 28 is a six month-old male who is the child of Cases 19 and 27









Case 26 *(Discharged)*

- Female Chinese national who arrived in Singapore from Wuhan on 21 Jan
- Daughter of Case 13, a 73 year-old female Chinese national who arrived in Singapore from Wuhan and subsequently tested positive for the COVID-19 infection on 30 Jan



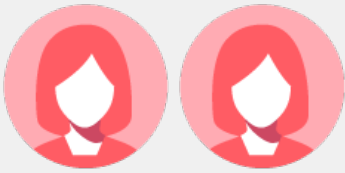
Case 25 *(Discharged)*

- Singapore Citizen, husband of Case 24, a 32 year-old female confirmed to have COVID-19 on 4 Feb

4 Feb 2020, 2pm	
	 
<p>Case 24 (<i>Discharged</i>)</p> <ul style="list-style-type: none"> • Female Singapore resident • Tourist guide who brought tour groups to the shop where cases 19 and 20 work at 	<p>Case 23 and 22 (<i>Both discharged</i>)</p> <ul style="list-style-type: none"> • Among the group of Singaporeans who were evacuated from Wuhan on 30 Jan
	 
<p>Case 21 (<i>Discharged</i>)</p> <ul style="list-style-type: none"> • Female Indonesian national • Foreign domestic worker, whose employer is Case 19 	<p>Case 20 and 19 (<i>Case 19 discharged</i>)</p> <ul style="list-style-type: none"> • Singapore residents • Both work at a shop where they had prolonged interactions with travellers from China • At least two of these travellers had since been confirmed with the COVID-19 infection

Week 2: 27 Jan - 2 Feb

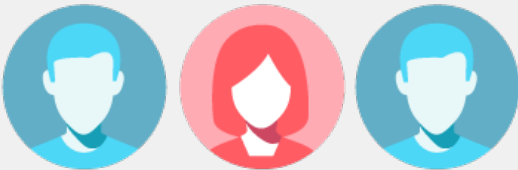
1 Feb 2020



Case 18 and 17 (*All discharged*)

- Imported cases

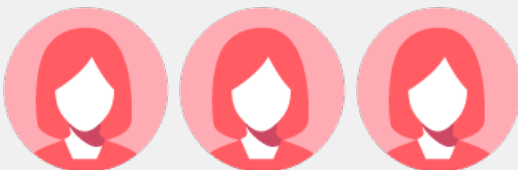
31 Jan 2020, 2pm



Case 16, 15 and 14 (*All discharged*)

- Imported cases

30 Jan 2020, 2pm



Case 13, 12 and 11 (*All discharged*)

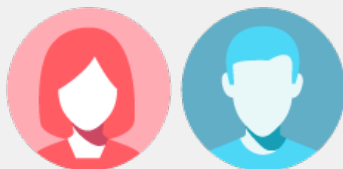
- All Chinese nationals from Wuhan

29 Jan 2020, 2pm



Case 10 (*Discharged*)

- 56 year-old male Chinese national, arrived in Singapore from Wuhan on 20 Jan



Case 8 & 9 (*Both discharged*)

- 56 year-old female and a 56-year-old male, married couple
- Chinese nationals from Wuhan, arrived together in Singapore on 19 Jan

28 Jan 2020, 12pm



Case 7 *(Discharged)*

- 35 year-old male Chinese national from Wuhan
- Arrived in Singapore on 23 Jan with family and friends



Case 6 *(Discharged)*

- 56 year-old male Chinese national from Wuhan
- Arrived in Singapore with his family on 19 Jan

27 Jan 2020, 2pm



Case 5 *(Discharged)*

- 56 year-old female Chinese national from Wuhan
- Arrived in Singapore with her family on 18 Jan

Week 1: 23 Jan to 26 Jan

25 Jan 2020, 10pm



Case 4 *(Discharged)*

- 36 year-old male Chinese national from Wuhan
- Arrived in Singapore with his family on 22 Jan

24 Jan 2020



Case 3 *(Discharged)*

- 37 year-old male Chinese national from Wuhan
- Son of the first confirmed case announced on 23 Jan



Case 2 *(Discharged)*

- 53 year-old female Chinese national from Wuhan
- Arrived in Singapore with her family on 21 Jan

23 Jan 2020



Case 1 *(Discharged)*

- 66 year-old male Chinese national from Wuhan
- Arrived in Singapore with his family on 20 Jan

TOPICS

HEALTH

COVID-19

Share:      | 

PART OF A SPECIAL FEATURE

COVID-19 (Coronavirus Disease 2019)



LET'S DO OUR PART



Wash your hands frequently with soap

Monitor your temperature twice daily

Use tissues when sneezing or coughing

Bin litter, used masks and tissues



Return trays and keep tables clean



Keep your surroundings clean, well-ventilated and pest-free



Keep toilets clean and dry

If you are sick

Please obey Home Quarantine Orders and Stay-Home Notices

1 Wear a mask



2 See a doctor



3 Stay at home



EXPLORE

RELATED ARTICLES



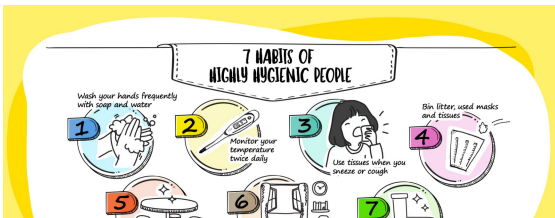
COVID-19: Travel restrictions for foreign visitors entering Singapore



Check on travel restrictions before you fly overseas during this COVID-19 period



Taking care of our seniors amidst COVID-19



7 habits of highly hygienic people



Keeping a safe distance can lower the spread of COVID-19 - how do we do it?

Is this page useful? [Yes](#) • [No](#)

[Is there anything wrong with this page?](#)

Most Popular

[Coronavirus disease 2019: Cases in Singapore](#)

[COVID-19: Travel restrictions for foreign visitors entering Singapore](#)

[COVID-19 spread caused by socially irresponsible behaviour](#)

[What do the different DORSCON levels mean](#)

[Check on travel restrictions before you fly overseas during this COVID-19 period](#)



[Who We Are](#)

[Contact](#)

[FAQ](#)

[Privacy Statement](#)

[Terms of Use](#)

[Rate This Website](#)

[Report Vulnerability](#)



This site is best viewed using IE9.039 & above and Chrome.

