

Share :      | 

 Listen 

As of 6 April 2020, 12pm, the Ministry of Health (MOH) has confirmed 1 imported and 65 local cases of COVID-19 infection in Singapore.

Among the local cases:

- 35 cases are linked to existing clusters
  - 24 cases are linked to clusters at foreign worker dormitories
  - 11 cases are linked to non-dormitory clusters
- Contact tracing is ongoing for the remaining 30 cases

24 more cases of COVID-19 infection have been discharged from hospitals or community isolation facilities. Of the 571 confirmed cases who are still in hospital, most are stable or improving. 25 are in critical condition in the intensive care unit.

454 cases who are clinically well but still test positive for COVID-19 are isolated and cared for at Concord International Hospital, Mount Elizabeth Hospital, Gleneagles Hospital and the Community Isolation Facility at D'Resort NTUC. 6 have passed away from complications due to COVID-19 infection.

*For more details, refer to MOH's [press release](#).*

*For an overview of the COVID-19 cases in Singapore, refer to the table below:*

Share:      | 

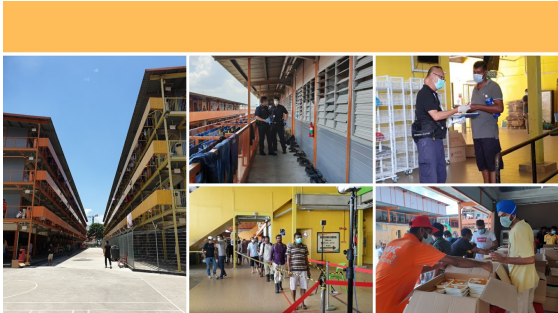
**PART OF A SPECIAL FEATURE**

**COVID-19 (Coronavirus Disease 2019)**



**EXPLORE** 

**RELATED ARTICLES**



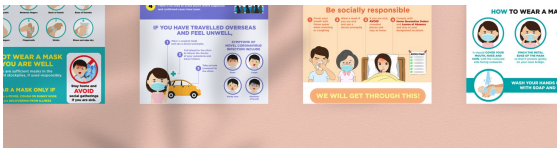
Containing COVID-19 spread at foreign worker dormitories



COVID-19: Updates and announcements



COVID-19 Resources



COVID-19: Advisories for Various Sectors



Clarification regarding falsehood published by Singapore States Times on quarantine of foreign workers

Is this page useful? [Yes](#) • [No](#)

[Is there anything wrong with this page?](#)

## Most Popular

---

[Everything you need to know about Stay-Home Notice](#)

---

[COVID-19: Travel restrictions for foreign visitors entering Singapore](#)

---

[Keeping a safe distance can lower the spread of COVID-19 - how do we do it?](#)

---

[What do the different DORSCON levels mean](#)

---

[Help speed up contact tracing with TraceTogether](#)

[Privacy Statement](#)

[Terms of Use](#)

[Rate This Website](#)

[Report Vulnerability](#)



This site is best viewed using IE9.039 & above and Chrome.

© 2020 Government of Singapore Last updated on 06 Apr 2020