

Share :      | 

 Listen 

As of 15 April 2020, 12pm, the Ministry of Health (MOH) has confirmed an additional 447 cases of COVID-19 infection in Singapore.

Among the cases:

- 0 imported
- 38 are local cases in the community
- 5 are Work Permit holders residing outside dormitories
- 404 are Work Permit holders residing in dormitories

Of the new cases, 68% are linked to known clusters, while the rest are pending contact tracing.

41 more cases of COVID-19 infection have been discharged from hospitals or community isolation facilities. To date, 652 have fully recovered from the infection and have been discharged from hospitals or community isolation facilities.

Of the 1,496 confirmed cases who are still in hospital, most are stable or improving. 26 are in critical condition in the intensive care unit.

1,540 cases who are clinically well but still test positive for COVID-19 are isolated and cared for at community facilities.

10 have passed away from complications due to COVID-19 infection.

For more details, refer to MOH's [press release](#).

For an overview of the COVID-19 cases in Singapore, refer to the table below:

TOPICS

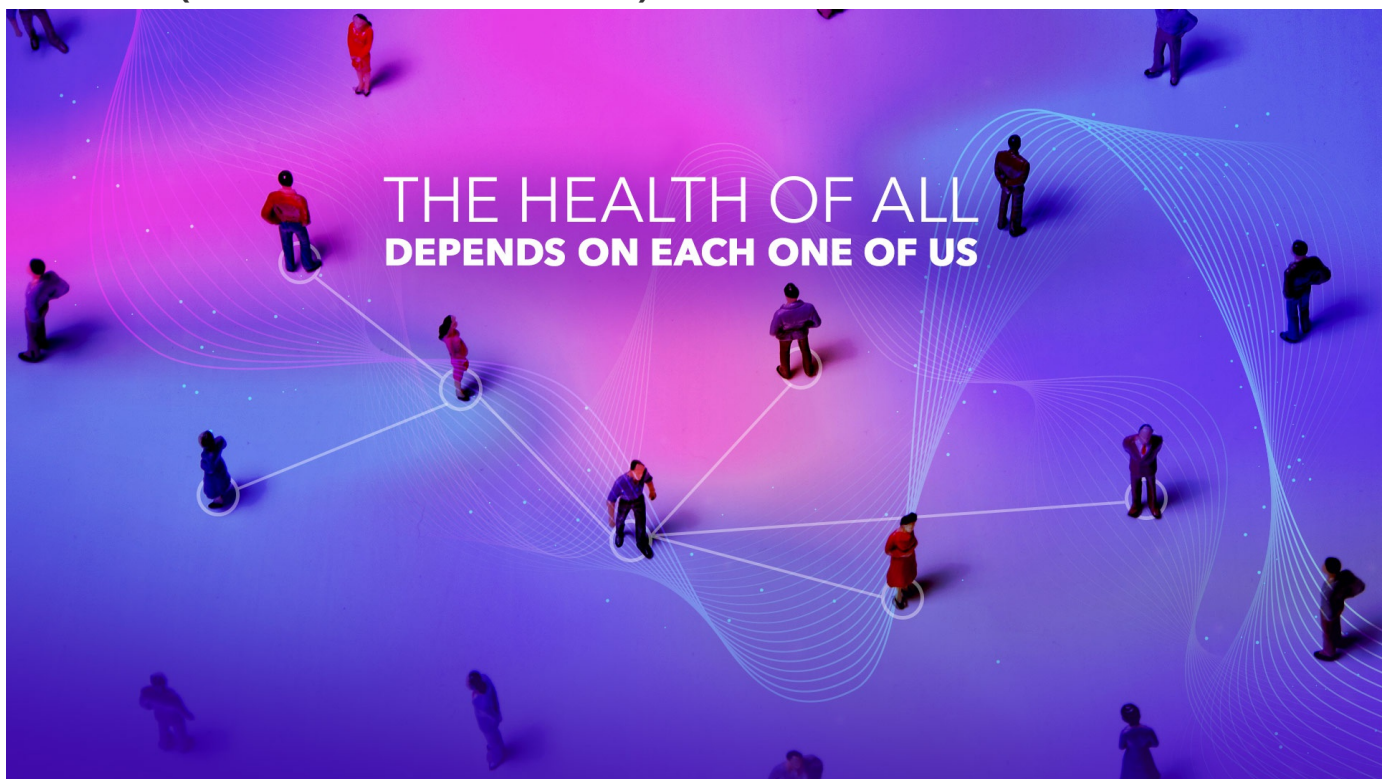
HEALTH

COVID-19

Share:      | 

PART OF A SPECIAL FEATURE

COVID-19 (Coronavirus Disease 2019)



EXPLORE 

RELATED ARTICLES



COVID-19: Updates and announcements



Containing COVID-19 spread at foreign worker dormitories



When should I wear a mask?



COVID-19: Advisories for Various Sectors



Clarifications on misinformation regarding the Coronavirus disease 2019

Is this page useful? [Yes](#) • [No](#)

[Is there anything wrong with this page?](#)

Most Popular

[#StayHomeForSingapore from 7 April to 4 May](#)

[Solidarity Budget 2020 : Additional cash payments to help families get through Circuit Breaker phase](#)

[Solidarity Budget 2020: More support for workers during the Circuit Breaker phase](#)

[Solidarity Budget 2020: Further support for businesses through the circuit breaker period](#)

[COVID-19 circuit breaker: Closure of workplace premises](#)

[Who We Are](#)

[Contact](#)

[FAQ](#)

[Privacy Statement](#)

[Terms of Use](#)

[Rate This Website](#)

[Report Vulnerability](#)



This site is best viewed using IE9.039 & above and Chrome.

© 2020 Government of Singapore Last updated on 15 Apr 2020