

Share :      | 

 Listen 

As of 17 April 2020, 12pm, the Ministry of Health (MOH) has confirmed an additional 623 cases of COVID-19 infection in Singapore.

Among the cases:

- 1 imported case
- 27 are cases in the community
 - 22 Singaporeans/Permanent Residents, 4 work passes, 1 visitor
- 37 are Work Permit holders residing outside dormitories
- 558 are Work Permit holders residing in dormitories

Of the new cases, 69% are linked to known clusters, while the rest are pending contact tracing.

Note: Yesterday's report highlighted 48 community cases. Subsequent contact tracing found that these 22 cases were residing in dormitories → there were only 26 cases in the community yesterday.

25 more cases of COVID-19 infection have been discharged from hospitals or community isolation facilities. To date, 708 have fully recovered from the infection and have been discharged from hospitals or community isolation facilities.

Of the 2,113 confirmed cases who are still in hospital, most are stable or improving. 22 are in critical condition in the intensive care unit.

2,218 cases who are clinically well but still test positive for COVID-19 are isolated and cared for at community facilities.

Passing of a 95 year old due to COVID-19

A 95 year-old male Singapore Citizen, has passed away from complications due to COVID-19 infection on 17 April 2020. He was confirmed to have COVID-19 infection on 13 April. Raffles Hospital has reached out to his family and is extending assistance to them.

11 have passed away from complications due to COVID-19 infection.

For more details, refer to MOH's [press release](#).

For an overview of the COVID-19 cases in Singapore, refer to the table below:

TOPICS

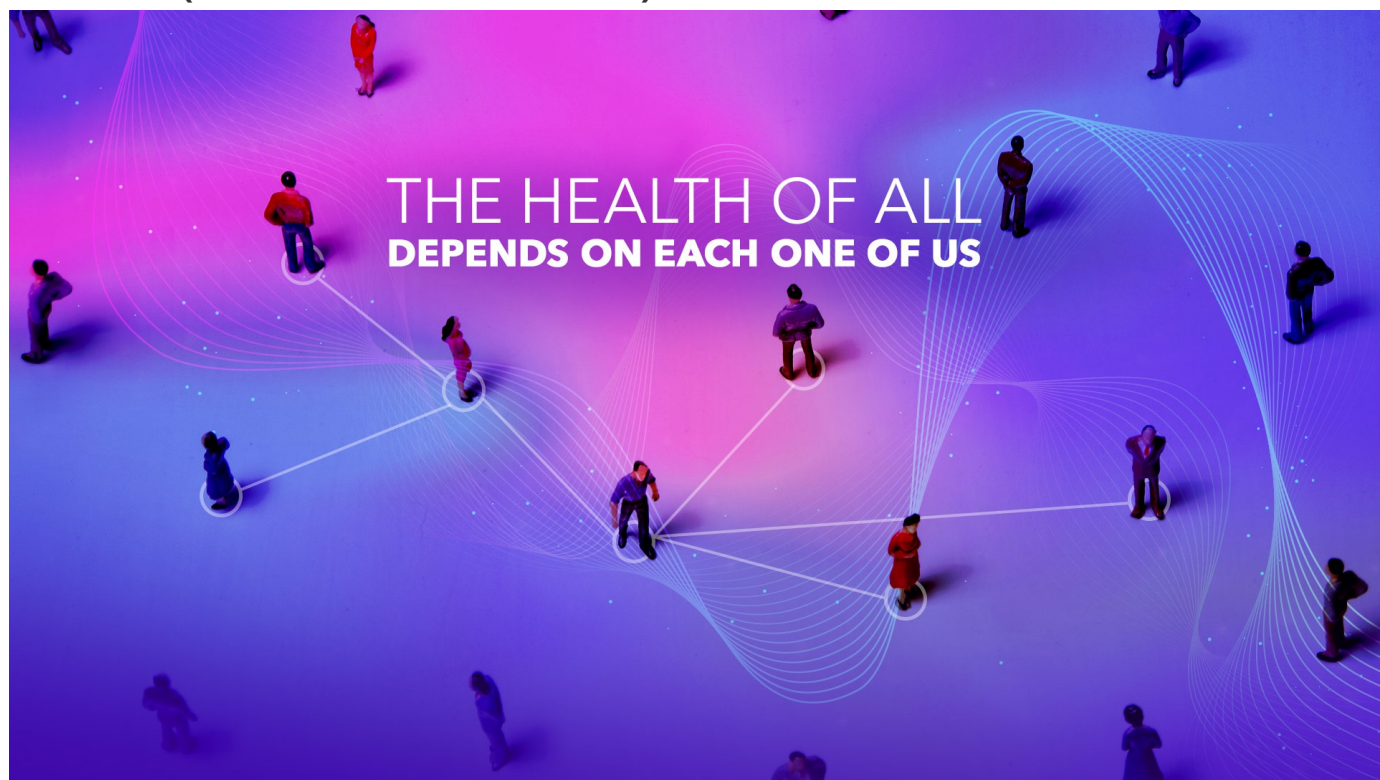
HEALTH

COVID-19

Share:      | 

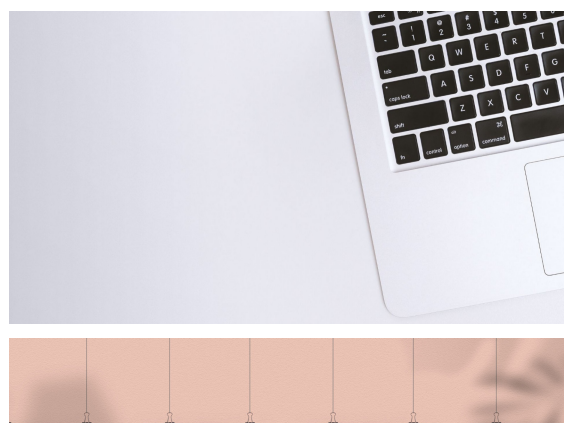
PART OF A SPECIAL FEATURE

COVID-19 (Coronavirus Disease 2019)



EXPLORE 

RELATED ARTICLES



COVID-19: Updates and announcements

COVID-19 Resources



COVID-19: Advisories for Various Sectors



Containing COVID-19 spread at foreign worker dormitories



When should I wear a mask?



Is this page useful? [Yes](#) • [No](#)
Is there anything wrong with this page?

Most Popular

#StayHomeForSingapore from 7 April to 4 May

Solidarity Budget 2020 : Additional cash payments to help families get through Circuit Breaker phase

Solidarity Budget 2020: More support for workers during the Circuit Breaker phase

Solidarity Budget 2020: Further support for businesses through the circuit breaker period



[Who We Are](#)

[Contact](#)

[FAQ](#)

[Privacy Statement](#)

[Terms of Use](#)

[Rate This Website](#)

[Report Vulnerability](#)



This site is best viewed using IE9.039 & above and Chrome.

© 2020 Government of Singapore Last updated on 17 Apr 2020