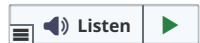


Share :      | 



As of 21 April 2020, 12pm, the Ministry of Health (MOH) has confirmed 1,111 new cases of COVID-19 infection in Singapore.

Among the cases:

- 0 imported case
- 28 are cases in the community
  - 20 Singaporeans/Permanent Residents, 8 Work/ Long Term Passes
- 33 are Work Permit holders residing outside dormitories
- 1,050 are Work Permit holders residing in dormitories

Of the new cases, 66% are linked to known clusters, while the rest are pending contact tracing.

39 more cases of COVID-19 infection have been discharged from hospitals or community isolation facilities. To date, 839 have fully recovered from the infection and have been discharged from hospitals or community isolation facilities.

Of the 3,593 confirmed cases who are still in hospital, most are stable or improving. 27 are in critical condition in the intensive care unit.

4,682 cases who are clinically well but still test positive for COVID-19 are isolated and cared for at community facilities.

11 have passed away from complications due to COVID-19 infection.

*For more details, refer to MOH's [press release](#).*

*For an overview of the COVID-19 cases in Singapore, refer to the table below:*

TOPICS

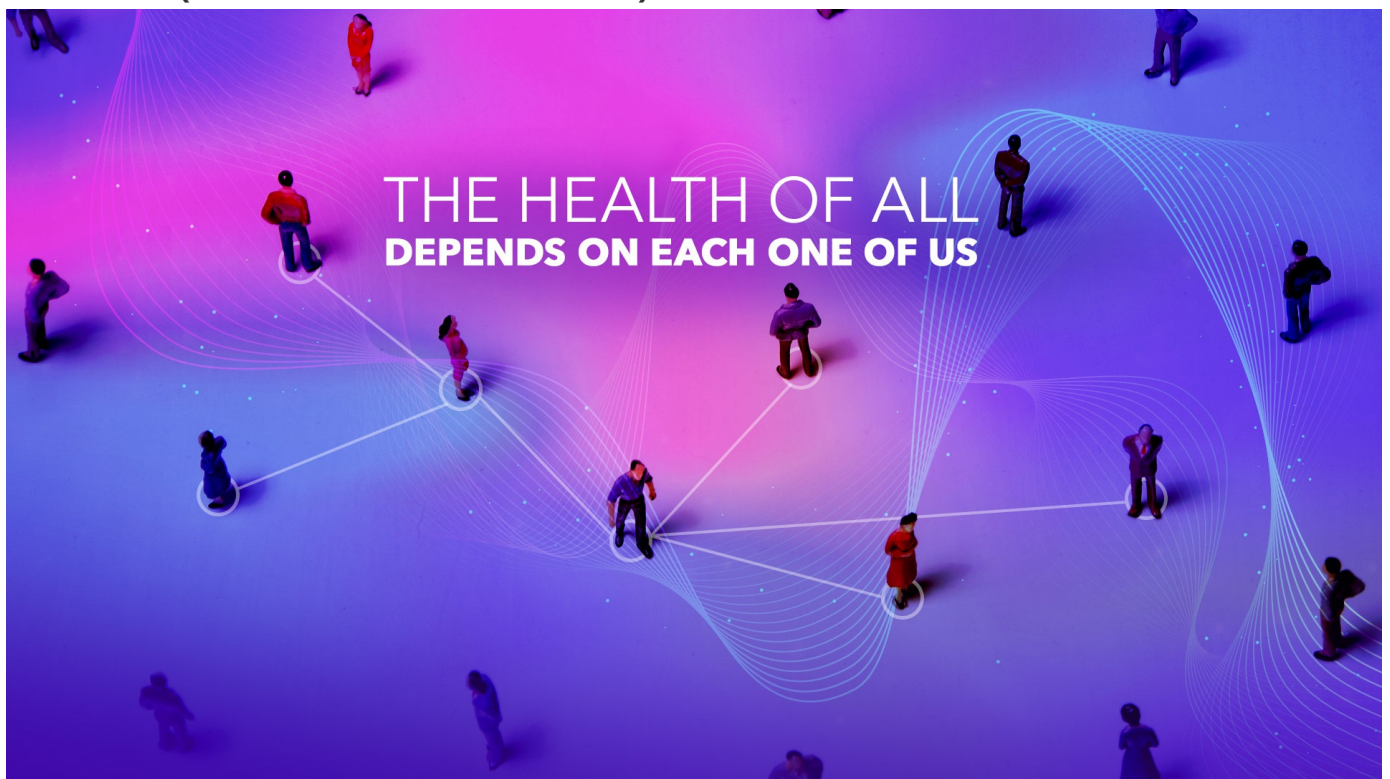
HEALTH

COVID-19

Share:      | 

**PART OF A SPECIAL FEATURE**

**COVID-19 (Coronavirus Disease 2019)**



**EXPLORE** 

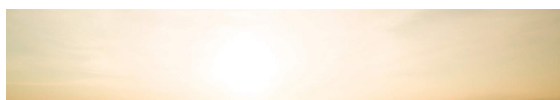
**RELATED ARTICLES**



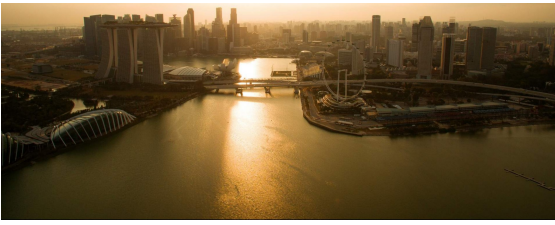
**COVID-19: Updates and announcements**



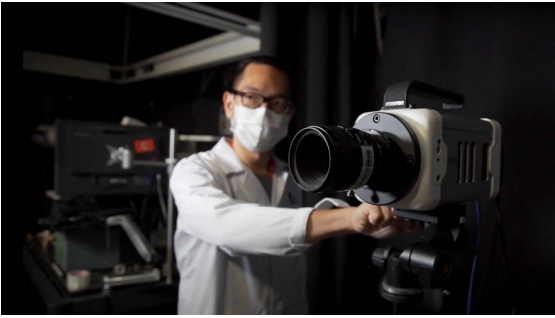
**Circuit Breaker extension and tighter measures: What you need to know**



**PM Lee's address on the COVID-19 Situation in Singapore (21 April 2020)**



The science behind why masks help prevent COVID-19 spread



COVID-19: Advisories for Various Sectors



Is this page useful? [Yes](#) • [No](#)

[Is there anything wrong with this page?](#)

## Most Popular

---

[#StayHomeForSingapore from 7 April to 4 May](#)

---

[New safe-distancing measures to limit further spread](#)

---

[COVID-19 Resources](#)

---

[COVID-19: Updates and announcements](#)

---

[Got a question about the latest COVID-19 measures? Try out the Gov.sg Info Bot](#)

[Contact](#)

[FAQ](#)

[Privacy Statement](#)

[Terms of Use](#)

[Rate This Website](#)

[Report Vulnerability](#)



This site is best viewed using IE9.039 & above and Chrome.

© 2020 Government of Singapore Last updated on 21 Apr 2020