

Share :      | 

 Listen 

As of 22 April 2020, 12pm, the Ministry of Health (MOH) has confirmed 1,016 new cases of COVID-19 infection in Singapore.

Among the cases:

- 0 imported case
- 17 are cases in the community
 - 15 Singaporeans/Permanent Residents, 2 Work Passes
- 32 are Work Permit holders residing outside dormitories
- 967 are Work Permit holders residing in dormitories

Of the new cases, 73% are linked to known clusters, while the rest are pending contact tracing.

57 more cases of COVID-19 infection have been discharged from hospitals or community isolation facilities. To date, 896 have fully recovered from the infection and have been discharged from hospitals or community isolation facilities.

Of the 4,999 confirmed cases who are still in hospital, most are stable or improving. 25 are in critical condition in the intensive care unit.

4,999 cases who are clinically well but still test positive for COVID-19 are isolated and cared for at community facilities.

Passing of 84 year old due to COVID-19

An 84 year-old female Singapore Citizen, has passed away from complications due to COVID-19 infection on 21 April 2020 night. She was confirmed to have COVID-19 infection on 2 April. Khoo Teck Puat Hospital has reached out to her family and is extending assistance to them.

12 have passed away from complications due to COVID-19 infection.

For more details, refer to MOH's [press release](#).

For an overview of the COVID-19 cases in Singapore, refer to the table below:

TOPICS

HEALTH

COVID-19

Share:      | 

PART OF A SPECIAL FEATURE

COVID-19 (Coronavirus Disease 2019)

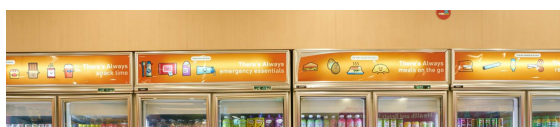


EXPLORE 

RELATED ARTICLES



COVID-19: Updates and announcements



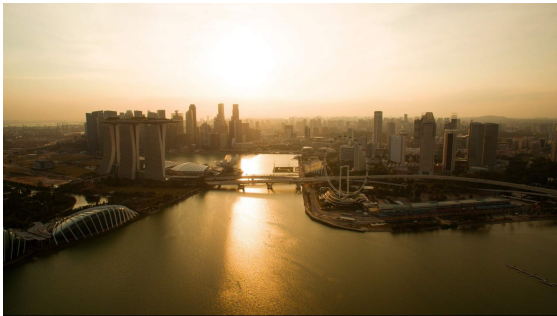
What stores remain open, and what stores have to close during the circuit breaker period?



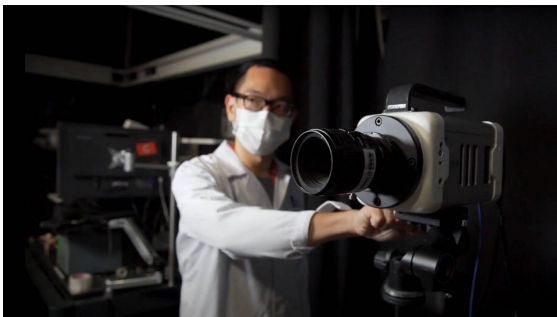
Circuit Breaker extension and tighter measures: What you need to know



PM Lee's address on the COVID-19 Situation in Singapore (21 April 2020)



The science behind why masks help prevent COVID-19 spread



Is this page useful? [Yes](#) • [No](#)

[Is there anything wrong with this page?](#)

Most Popular

Circuit Breaker extension and tighter measures: What you need to know

What stores remain open, and what stores have to close during the circuit breaker period?

The science behind why masks help prevent COVID-19 spread

Tackling transmissions in migrant worker clusters

Visits to popular markets to be restricted based on the last digit of your IC number



[Who We Are](#)

[Contact](#)

[FAQ](#)

[Privacy Statement](#)

[Terms of Use](#)

[Rate This Website](#)

[Report Vulnerability](#)



This site is best viewed using IE9.039 & above and Chrome.

© 2020 Government of Singapore Last updated on 22 Apr 2020