

Share :      | 

 Listen 

As of 23 April 2020, 12pm, the Ministry of Health (MOH) has confirmed 1,037 new cases of COVID-19 infection in Singapore.

Among the cases:

- 0 imported case
- 25 are cases in the community
 - 22 Singaporeans/Permanent Residents, 3 Work Passes
- 30 are Work Permit holders residing outside dormitories
- 982 are Work Permit holders residing in dormitories

Of the new cases, 75% are linked to known clusters, while the rest are pending contact tracing.

36 more cases of COVID-19 infection have been discharged from hospitals or community isolation facilities. To date, 924 have fully recovered from the infection and have been discharged from hospitals or community isolation facilities.

Most of the 1,368 confirmed cases who are still in hospital are stable or improving. 26 are in critical condition in the intensive care unit.

8,874 cases who have mild symptoms, or are clinically well but still test positive for COVID-19 are isolated and cared for at community facilities.

12 have passed away from complications due to COVID-19 infection.

TOPICS

HEALTH

COVID-19

Share :      | 

PART OF A SPECIAL FEATURE

COVID-19 (Coronavirus Disease 2019)



EXPLORE 

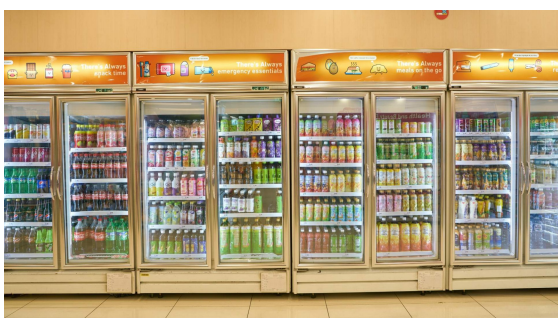
RELATED ARTICLES



COVID-19: Updates and announcements



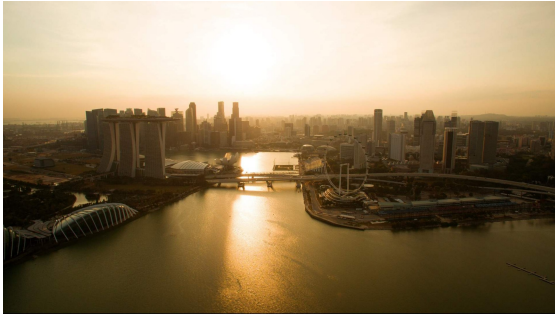
Call these helplines if you need emotional or psychological support



What stores remain open, and what stores have to close during the circuit breaker period?



Circuit Breaker extension and tighter measures: What you need to know



PM Lee's address on the COVID-19 Situation in Singapore (21 April 2020)

Is this page useful? [Yes](#) • [No](#)

[Is there anything wrong with this page?](#)

Most Popular

Circuit Breaker extension and tighter measures: What you need to know

What stores remain open, and what stores have to close during the circuit breaker period?

The science behind why masks help prevent COVID-19 spread

Tackling transmissions in migrant worker clusters

Visits to popular markets to be restricted based on the last digit of your IC number



[Who We Are](#)

[Contact](#)

[FAQ](#)

[Privacy Statement](#)

[Terms of Use](#)

[Rate This Website](#)

[Report Vulnerability](#)



This site is best viewed using IE9.039 & above and Chrome.

© 2020 Government of Singapore Last updated on 24 Apr 2020