



COVID-19: Cases in Singapore

NATIONAL CENTRE FOR INFECTIOUS DISEASES

An update of the latest confirmed cases in Singapore

3 min read | Published on 30 Apr 2020

Share :      | 

 Listen 

As of 30 April 2020, 12pm, the Ministry of Health (MOH) has confirmed 528 new cases of COVID-19 infection in Singapore.

Among the cases:

- 0 imported case
- 9 are cases in the community
 - 6 Singaporeans/Permanent Residents, 3 Work Passes
- 31 are Work Permit holders residing outside dormitories
- 488 are Work Permit holders residing in dormitories

Of the new cases, 85% are linked to known clusters, while the rest are pending contact tracing.

56 more cases of COVID-19 infection have been discharged from hospitals or community isolation facilities. To date, 1,244 have fully recovered from the infection and have been discharged from hospitals or community isolation facilities.

Most of the 1,708 confirmed cases who are still in hospital are stable or improving. 22 are in critical condition in the intensive care unit.

13,202 cases who have mild symptoms, or are clinically well but still test positive for COVID-19 are isolated and cared for at community facilities.

A 58 year-old female Singapore Citizen, has passed away from complications due to COVID-19 infection on 30 April 2020. She was confirmed to have COVID-19 infection on 26 March. Ng Teng Fong General Hospital has reached out to her family and is extending assistance to them.

15 have passed away from complications due to COVID-19 infection.

For more details, refer to MOH's [press release](#).

TOPICS

HEALTH

Share:      | 

PART OF A SPECIAL FEATURE

COVID-19 (Coronavirus Disease 2019)



EXPLORE 

RELATED ARTICLES



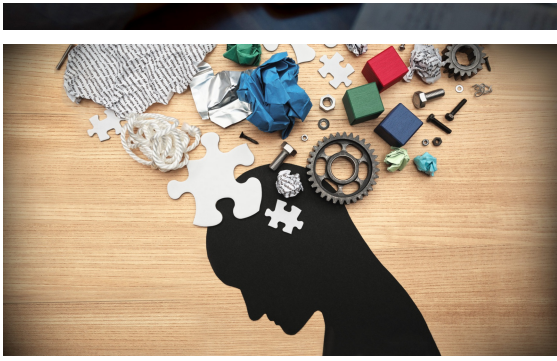
COVID-19: Updates and announcements



COVID-19 Resources



Clarifications: Misinformation, rumours regarding COVID-19



Call these helplines if you need emotional or psychological support



What stores remain open, and what stores have to close during the circuit breaker period?

Is this page useful? [Yes](#) • [No](#)

[Is there anything wrong with this page?](#)

Most Popular

[Circuit Breaker extension and tighter measures: What you need to know](#)

[What stores remain open, and what stores have to close during the circuit breaker period?](#)

[The science behind why masks help prevent COVID-19 spread](#)

[Tackling transmissions in migrant worker clusters](#)

[Visits to popular markets to be restricted based on the last digit of your IC number](#)



[Who We Are](#)

[Contact](#)

[FAQ](#)

[Privacy Statement](#)

[Terms of Use](#)

[Rate This Website](#)

[Report Vulnerability](#)



This site is best viewed using IE9.039 & above and Chrome.

© 2020 Government of Singapore Last updated on 30 Apr 2020