

Share :      | 

Listen

As of 1 May 2020, 12pm, the Ministry of Health (MOH) has confirmed 932 new cases of COVID-19 infection in Singapore.

Among the cases:

- 0 imported case
- 11 are cases in the community
 - 5 Singaporeans/Permanent Residents, 6 Work Passes
- 16 are Work Permit holders residing outside dormitories
- 905 are Work Permit holders residing in dormitories

Of the new cases, 70% are linked to known clusters, while the rest are pending contact tracing.

24 more cases of COVID-19 infection have been discharged from hospitals or community isolation facilities. To date, 1,268 have fully recovered from the infection and have been discharged from hospitals or community isolation facilities.

Most of the 1,764 confirmed cases who are still in hospital are stable or improving. 23 are in critical condition in the intensive care unit.

14,053 cases who have mild symptoms, or are clinically well but still test positive for COVID-19 are isolated and cared for at community facilities.

A 60 year-old male Singapore Citizen, has passed away from complications due to COVID-19 infection on 1 May 2020. He was confirmed to have COVID-19 infection on 13 April, and had a history of hypertension and hyperlipidaemia. The National Centre for Infectious Diseases has reached out to his family and is extending assistance to them.

16 have passed away from complications due to COVID-19 infection.

For more details, refer to MOH's [press release](#).

TOPICS

HEALTH

COVID-19

Share:      | 

PART OF A SPECIAL FEATURE

COVID-19 (Coronavirus Disease 2019)



EXPLORE 

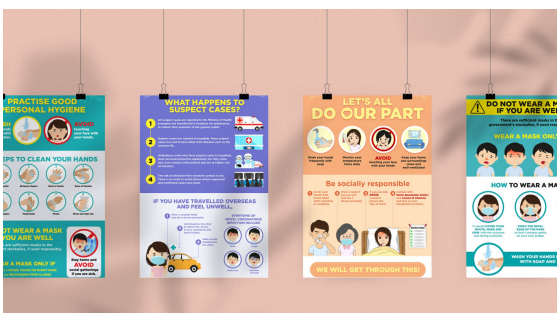
RELATED ARTICLES



Easing circuit breaker measures: How are we cautiously lifting restrictions?



COVID-19: Updates and announcements



COVID-19 Resources



Clarifications: Misinformation, rumours regarding COVID-19



Call these helplines if you need emotional or psychological support

Is this page useful? [Yes](#) • [No](#)

[Is there anything wrong with this page?](#)

Most Popular

Circuit Breaker extension and tighter measures: What you need to know

What stores remain open, and what stores have to close during the circuit breaker period?

The science behind why masks help prevent COVID-19 spread

Tackling transmissions in migrant worker clusters

Visits to popular markets to be restricted based on the last digit of your IC number

gov
.sg

Who We Are

Contact

FAQ

Privacy Statement

Terms of Use

[Rate This Website](#)

[Report Vulnerability](#)



This site is best viewed using IE9.039 & above and Chrome.

© 2020 Government of Singapore Last updated on 01 May 2020