

Share : |

Listen

As of 20 May 2020, 12pm, the Ministry of Health (MOH) has confirmed 570 new cases of COVID-19 infection in Singapore.

Among the cases:

- Imported cases: 0
- Cases in the community: 8 (2 Singaporeans/PRs, 1 Work Pass holder, 5 Work Permit holders)
- Work Permit holders residing in dormitories: 562

Of the new cases, 99% are linked to known clusters, while the rest are pending contact tracing.

842 more cases of COVID-19 infection have been discharged from hospitals or community isolation facilities. To date, 11,207 have fully recovered from the infection and have been discharged from hospitals or community isolation facilities.

Most of the 954 confirmed cases who are still in hospital are stable or improving. 11 are in critical condition in the intensive care unit.

17,181 cases who have mild symptoms, or are clinically well but still test positive for COVID-19 are isolated and cared for at community facilities.

22 have passed away from complications due to COVID-19 infection.

For more details, refer to MOH's [press release](#).

TOPICS

HEALTH

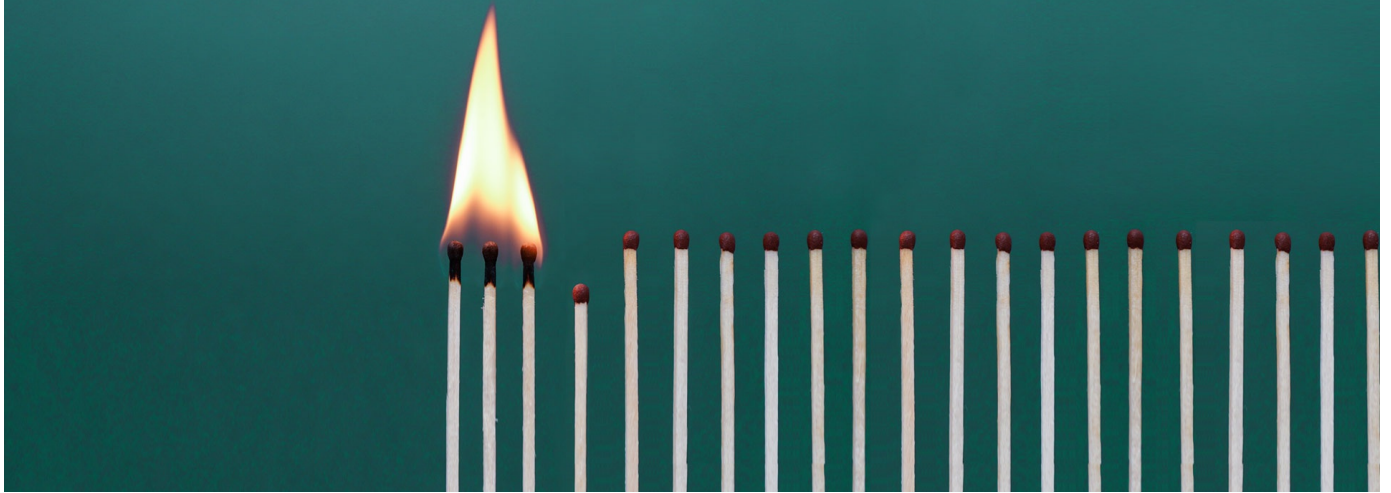
COVID-19

Share : |

PART OF A SPECIAL FEATURE

COVID-19 (Coronavirus Disease 2019)

THE HEALTH OF ALL
DEPENDS ON EACH ONE OF US



[EXPLORE](#) 

RELATED ARTICLES



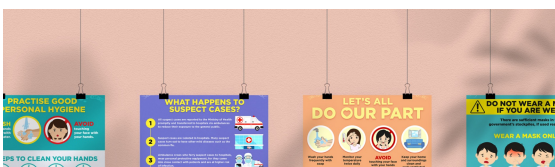
[Post-circuit breaker – when can we move on to phases 2 and 3?](#)



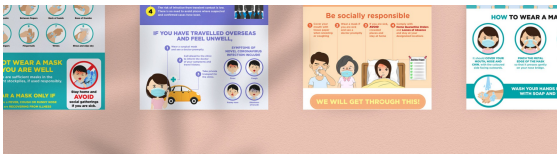
[Staying COVID-safe after circuit breaker ends](#)



[COVID-19: Updates and announcements](#)



[COVID-19 Resources](#)



COVID-19: Advisories for Various Sectors

Is this page useful? [Yes](#) • [No](#)

Is there anything wrong with this page?

Most Popular

[Cabin Fever 101: Are you feeling it?](#)

[How to help the seniors in your family go digital](#)

[Digital contact tracing tools required for all businesses and services operating during circuit breaker](#)

[How will businesses gradually resume activities after 1 June 2020?](#)

[Safe Management Measures required at the workplace after the circuit breaker period](#)



[Who We Are](#)

[Contact](#)

[FAQ](#)

[Privacy Statement](#)

[Terms of Use](#)

[Rate This Website](#)

[Report Vulnerability](#)



This site is best viewed using IE9.039 & above and Chrome.

© 2020 Government of Singapore Last updated on 20 May 2020