

COVID-19: Cases in Singapore

NATIONAL CENTRE FOR INFECTIOUS DISEASES

An update of the latest confirmed cases in Singapore

min read | Published on 29 May 2020

Share :      | 

Listen

As of 28 May 2020, 12pm, the Ministry of Health (MOH) has confirmed 373 new cases of COVID-19 infection in Singapore.

Among the cases:

- Imported cases: 0
- Cases in the community: 1 Work Pass holder
- Cases residing in dormitories: 372

Of the new cases, 99% are linked to known clusters, while the rest are pending contact tracing.

1,018 more cases of COVID-19 infection have been discharged from hospitals or community isolation facilities. To date, 18,294 have fully recovered from the infection and have been discharged from hospitals or community isolation facilities

Most of the 510 confirmed cases who are still in hospital are stable or improving. 7 are in critical condition in the intensive care unit.

14,422 cases who have mild symptoms, or are clinically well but still test positive for COVID-19 are isolated and cared for at community facilities.

23 have passed away from complications due to COVID-19 infection.

For more details, refer to MOH's [press release](#).

TOPICS

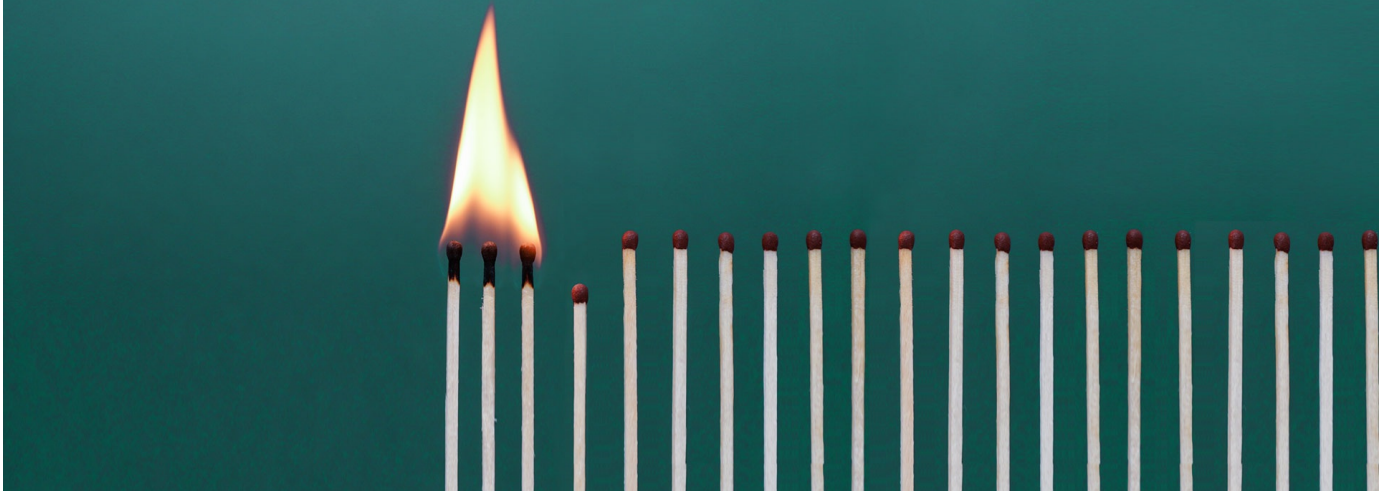
HEALTH

COVID-19

Share :      | 

PART OF A SPECIAL FEATURE

THE HEALTH OF ALL DEPENDS ON EACH ONE OF US



[EXPLORE](#)

RELATED ARTICLES



[COVID-19: Updates and announcements](#)



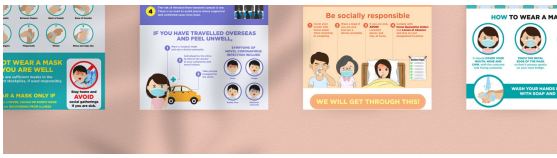
[Post-circuit breaker – when can we move on to phases 2 and 3?](#)



[Ending circuit breaker: phased approach to resuming activities safely](#)



[COVID-19 Resources](#)



COVID-19: Advisories for Various Sectors

Is this page useful? [Yes](#) • [No](#)

Is there anything wrong with this page?

Most Popular

Ending circuit breaker: phased approach to resuming activities safely

Safe Re-opening: How Singapore will resume activities after the circuit breaker

Post-circuit breaker – when can we move on to phases 2 and 3?

Staying COVID-safe after circuit breaker ends

Safe Management Measures required at the workplace after the circuit breaker period



[Who We Are](#)

[Contact](#)

[FAQ](#)

[Privacy Statement](#)

[Terms of Use](#)

[Rate This Website](#)

[Report Vulnerability](#)



This site is best viewed using IE9.039 & above and Chrome.

© 2020 Government of Singapore Last updated on 29 May 2020