

Share : |

Listen

As of 29 May 2020, 12pm, the Ministry of Health (MOH) has confirmed 611 new cases of COVID-19 infection in Singapore.

Among the cases:

- Imported cases: **0**
- Cases in the community: **9** (3 Singaporeans/Permanent Residents, 2 Work Pass holders, 4 Work Permit holders)
- Cases residing in dormitories: **602**

Of the new cases, 99% are linked to known clusters, while the rest are pending contact tracing.

1,337 more cases of COVID-19 infection have been discharged from hospitals or community isolation facilities. To date, 19,631 have fully recovered from the infection and have been discharged from hospitals or community isolation facilities

Most of the 461 confirmed cases who are still in hospital are stable or improving. 8 are in critical condition in the intensive care unit.

13,745 cases who have mild symptoms, or are clinically well but still test positive for COVID-19 are isolated and cared for at community facilities.

23 have passed away from complications due to COVID-19 infection.

For more details, refer to MOH's [press release](#).

TOPICS

[HEALTH](#)

COVID-19

Share : |

PART OF A SPECIAL FEATURE

COVID-19 (Coronavirus Disease 2019)

THE HEALTH OF ALL
DEPENDS ON EACH ONE OF US



EXPLORE 

RELATED ARTICLES



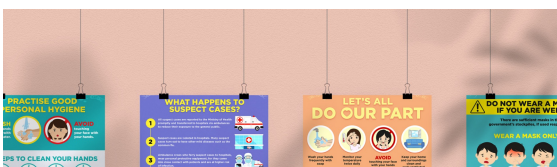
[COVID-19: Updates and announcements](#)



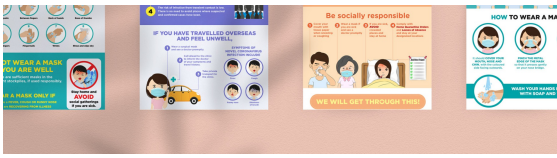
[Post-circuit breaker – when can we move on to phases 2 and 3?](#)



[Ending circuit breaker: phased approach to resuming activities safely](#)



[COVID-19 Resources](#)



COVID-19: Advisories for Various Sectors

Is this page useful? [Yes](#) • [No](#)

Is there anything wrong with this page?

Most Popular

Ending circuit breaker: phased approach to resuming activities safely

Safe Re-opening: How Singapore will resume activities after the circuit breaker

Post-circuit breaker – when can we move on to phases 2 and 3?

Staying COVID-safe after circuit breaker ends

Safe Management Measures required at the workplace after the circuit breaker period



[Who We Are](#)

[Contact](#)

[FAQ](#)

[Privacy Statement](#)

[Terms of Use](#)

[Rate This Website](#)

[Report Vulnerability](#)



This site is best viewed using IE9.039 & above and Chrome.

© 2020 Government of Singapore Last updated on 29 May 2020