

Share :      | 

Listen

As of 1 June 2020, 12pm, the Ministry of Health (MOH) has confirmed 408 new cases of COVID-19 infection in Singapore.

Among the cases:

- Imported cases: 0
- Cases in the community: 0
- Cases residing in dormitories: 408

All the new cases are linked to known clusters.

767 more cases of COVID-19 infection have been discharged from hospitals or community isolation facilities. To date, 22,466 have fully recovered from the infection and have been discharged from hospitals or community isolation facilities.

Most of the 344 confirmed cases who are still in hospital are stable or improving. 7 are in critical condition in the intensive care unit.

12,458 cases who have mild symptoms, or are clinically well but still test positive for COVID-19 are isolated and cared for at community facilities.

Passing of 51 year old due to COVID-19

A 51 year-old male Chinese national, has passed away from complications due to COVID-19 infection on 31 May 2020. He was diagnosed with lymphoma complicated by multi-organ failure while he had been warded in the intensive care unit in end-April. Despite being treated for lymphoma, his condition had deteriorated and he subsequently passed on. He was confirmed to have COVID-19 infection on 1 May. The National University Hospital has reached out to his family and is extending assistance to them.

24 have passed away from complications due to COVID-19 infection.

For more details, refer to MOH's [press release](#).

TOPICS

HEALTH

Share:      | 

PART OF A SPECIAL FEATURE

COVID-19 (Coronavirus Disease 2019)



[EXPLORE !\[\]\(339a16584d5da0f0a3ca4e9ec17bf6a1_img.jpg\)](#)

RELATED ARTICLES



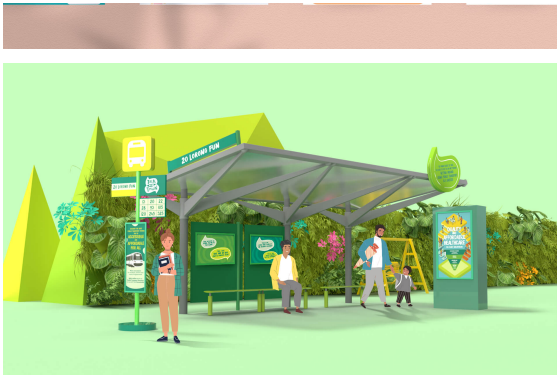
[COVID-19: Updates and announcements](#)



[COVID-19: Advisories for Various Sectors](#)



[COVID-19 Resources](#)



I am supporting my family – Staying healthy and active



Post-circuit breaker – when can we move on to phases 2 and 3?

Is this page useful? [Yes](#) • [No](#)

[Is there anything wrong with this page?](#)

Most Popular

[Public Places Visited by Cases in the Community during Infectious Period](#)

[Ending circuit breaker: phased approach to resuming activities safely](#)

[Safe Re-opening: How Singapore will resume activities after the circuit breaker](#)

[Post-circuit breaker – when can we move on to phases 2 and 3?](#)

[Staying COVID-safe after circuit breaker ends](#)



[Who We Are](#)

[Contact](#)

[FAQ](#)

[Privacy Statement](#)

[Terms of Use](#)

[Rate This Website](#)

[Report Vulnerability](#)



This site is best viewed using IE9.039 & above and Chrome.

© 2020 Government of Singapore Last updated on 01 Jun 2020