

Share : |

Listen

As of 2 June 2020, 12pm, the Ministry of Health (MOH) has confirmed 544 new cases of COVID-19 infection in Singapore.

Among the cases:

- Imported cases: **0**
- Cases in the community: **4 (1 Singaporean, 2 Work Pass holders, 1 Work Permit holder)**
- Cases residing in dormitories: **540**

Of new cases, 99% are linked to known clusters, the rest are pending contact tracing

709 more cases of COVID-19 infection have been discharged from hospitals or community isolation facilities. To date, 23,175 have fully recovered from the infection and have been discharged from hospitals or community isolation facilities.

Most of the 331 confirmed cases who are still in hospital are stable or improving. 6 are in critical condition in the intensive care unit.

12,306 cases who have mild symptoms, or are clinically well but still test positive for COVID-19 are isolated and cared for at community facilities.

24 have passed away from complications due to COVID-19 infection.

*For more details, refer to MOH's [press release](#).*

## TOPICS

[HEALTH](#)

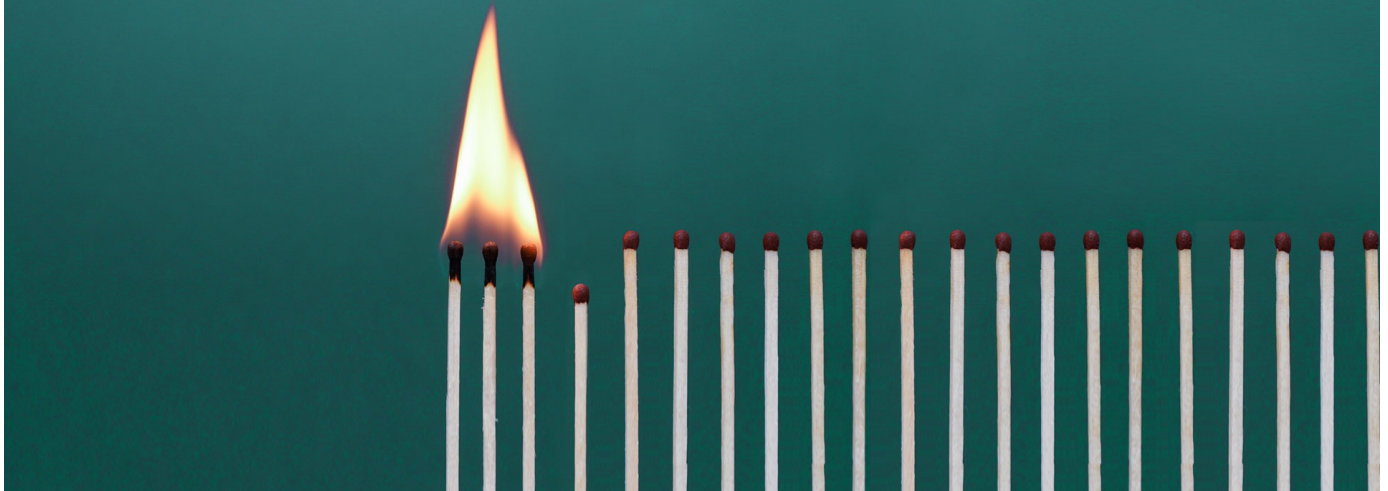
## COVID-19

Share : |

**PART OF A SPECIAL FEATURE**

# COVID-19 (Coronavirus Disease 2019)

THE HEALTH OF ALL  
DEPENDS ON EACH ONE OF US



EXPLORE 

## RELATED ARTICLES



COVID-19: Updates and announcements



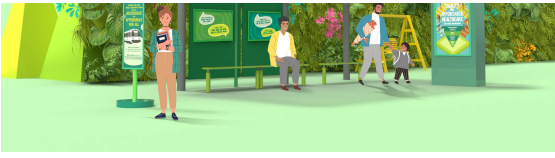
COVID-19: Advisories for Various Sectors



COVID-19 Resources



I am supporting my family – Staying healthy and active



Post-circuit breaker – when can we move on to phases 2 and 3?

Is this page useful? [Yes](#) • [No](#)

[Is there anything wrong with this page?](#)

## Most Popular

---

[Public Places Visited by Cases in the Community during Infectious Period](#)

---

[Ending circuit breaker: phased approach to resuming activities safely](#)

---

[Safe Re-opening: How Singapore will resume activities after the circuit breaker](#)

---

[Post-circuit breaker – when can we move on to phases 2 and 3?](#)

---

[Staying COVID-safe after circuit breaker ends](#)



[Who We Are](#)

[Contact](#)

[FAQ](#)

[Privacy Statement](#)

[Terms of Use](#)

[Rate This Website](#)

[Report Vulnerability](#)



This site is best viewed using IE9.039 & above and Chrome.

© 2020 Government of Singapore Last updated on 02 Jun 2020