

An update of the latest confirmed cases in Singapore

min read | Published on 23 Jun 2020

Share :      | 

Listen

As of 23 June 2020, 12pm, the Ministry of Health (MOH) has confirmed 119 new cases of COVID-19 infection in Singapore.

Among the cases:

- Imported cases: **0**
- Cases in the community: **3**
 - 1 Singapore Permanent Resident, 1 Work Pass holder, 1 Work Permit holder
- Cases residing in dormitories: **116**

Of new cases, 97% are linked to known clusters, the rest are pending contact tracing.

405 more cases of COVID-19 infection have been discharged from hospitals or community isolation facilities. To date, 35,590 have fully recovered from the infection and have been discharged from hospitals or community isolation facilities.

Most of the 192 confirmed cases who are still in hospital are stable or improving. 1 is in critical condition in the intensive care unit.

6,219 cases who have mild symptoms, or are clinically well but still test positive for COVID-19 are isolated and cared for at community facilities.

26 have passed away from complications due to COVID-19 infection.

Related link: [List of public places visited by confirmed cases in the community during Infectious Period](#)

For more details, refer to MOH's [press release](#).

TOPICS

HEALTH

COVID-19

Share :      | 

PART OF A SPECIAL FEATURE

COVID-19 (Coronavirus Disease 2019)



[EXPLORE](#) ➔

RELATED ARTICLES



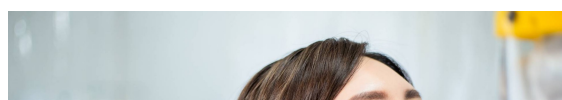
[COVID-19: Updates and announcements](#)



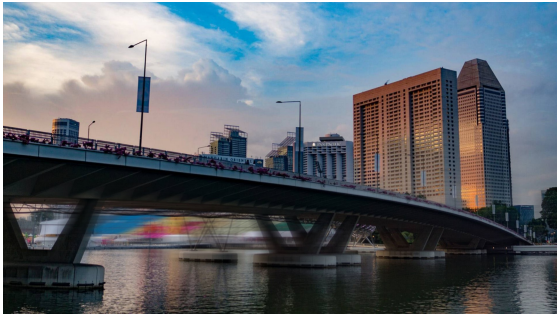
[COVID-19 Resources](#)



[COVID-19: Advisories for Various Sectors](#)



[Re-opening safely in Phase 2 – expanding Singapore’s testing regime and contact tracing tools](#)



Senior Minister Teo Chee Hean: Resilience in a changing external environment

Is this page useful? [Yes](#) • [No](#)

[Is there anything wrong with this page?](#)

Most Popular

[Moving into Phase 2: What activities can resume](#)

[Public Places Visited by Cases in the Community during Infectious Period](#)

[Updates to border measures for travellers entering Singapore](#)

[Ending circuit breaker: phased approach to resuming activities safely](#)

[PM Lee Hsien Loong: Overcoming the crisis of a generation](#)



[Who We Are](#)

[Contact](#)

[FAQ](#)

[Privacy Statement](#)

[Terms of Use](#)

[Rate This Website](#)

[Report Vulnerability](#)



This site is best viewed using IE9.039 & above and Chrome.

© 2020 Government of Singapore Last updated on 23 Jun 2020