

Share :      | 

Listen

As of 5 July 2020, 12pm, the Ministry of Health (MOH) has confirmed 136 new cases of COVID-19 infection in Singapore.

Among the cases:

- Imported case: 7
  - 4 Singaporeans/PRs, 2 Long-Term Visit Pass holders, 1 Dependant's Pass holder
- Cases in the community: 18
  - 6 Singaporeans/PRs, 2 Work Pass holders, 10 Work Permit holders
- Cases residing in dormitories: 111

Of new cases, 93% are linked to known clusters, the rest are pending contact tracing.

324 more cases of COVID-19 infection have been discharged from hospitals or community isolation facilities. To date, 40,441 have fully recovered from the infection and have been discharged from hospitals or community isolation facilities.

Most of the 212 confirmed cases who are still in hospital are stable or improving. 2 are in critical condition in the intensive care unit.

4,121 cases who have mild symptoms, or are clinically well but still test positive for COVID-19 are isolated and cared for at community facilities.

26 have passed away from complications due to COVID-19 infection.

Related link: [List of public places visited by confirmed cases in the community during Infectious Period](#)

*For more details, refer to MOH's [press release](#).*

## TOPICS

HEALTH

COVID-19

Share:      | 

PART OF A SPECIAL FEATURE

## COVID-19 (Coronavirus Disease 2019)



[EXPLORE](#) 

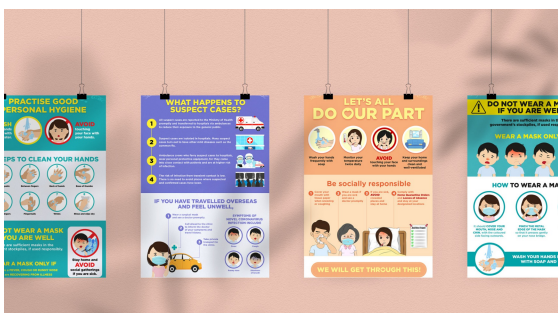
### RELATED ARTICLES



[COVID-19: Updates and announcements](#)



[Clarification regarding falsehood published by the National University of Singapore Society \(NUSS\), The Online Citizen Asia \(TOC\), CNA and New Naratif on MOM's advi... migrant workers](#)



[COVID-19 Resources](#)



## COVID-19: Advisories for Various Sectors



## Expanded testing in Phase 2, steady progress in dormitory clearance

Is this page useful? [Yes](#) • [No](#)

[Is there anything wrong with this page?](#)

## Most Popular

---

[Moving into Phase 2: What activities can resume](#)

---

[Public Places Visited by Cases in the Community during Infectious Period](#)

---

[Updates to border measures for travellers entering Singapore](#)

---

[Ending circuit breaker: phased approach to resuming activities safely](#)

---

[A home for everyone: Maintaining the quality and value of your flat](#)



[Who We Are](#)

[Contact](#)

[FAQ](#)

[Privacy Statement](#)

[Terms of Use](#)

[Rate This Website](#)



This site is best viewed using IE9.039 & above and Chrome.

© 2020 Government of Singapore Last updated on 05 Jul 2020