

Share :      | 

Listen

As of 7 July 2020, 12pm, the Ministry of Health (MOH) has confirmed 157 new cases of COVID-19 infection in Singapore.

Amongst the cases:

- Imported case: 3
 - 1 Work Pass holder, 2 Dependant's Pass holders

Amongst the 3 imported cases, 2 cases are Indian nationals who are Dependant's Pass holders, and have returned to Singapore from India on 23 June. The remaining case is a Filipino who returned to Singapore from the Philippines on 19 June. She is a Work Pass holder who is currently employed in Singapore. All of them had been placed on 14-day Stay-Home Notice (SHN) upon arrival in Singapore, and had been tested while serving their SHN.

- Cases in the community: 20
 - 12 Singaporeans/ Permanent Residents, 3 Work Pass holders, 5 Work Permit holders

Of the 20 cases in the community, 6 were picked up as a result of proactive surveillance and screening, and 11 had been placed on quarantine earlier. 12 of the community cases today are linked to previous cases or clusters.

- Cases residing in dormitories: 134

Of the new cases, 94% are linked to known clusters, the rest are pending contact tracing.

285 more cases of COVID-19 infection have been discharged from hospitals or community isolation facilities. To date, 41,002 have fully recovered from the infection and have been discharged from hospitals or community isolation facilities.

Most of the 219 confirmed cases who are still in hospital are stable or improving. 1 is in critical condition in the intensive care unit.

3,893 cases who have mild symptoms, or are clinically well but still test positive for COVID-19 are isolated and cared for at community facilities.

26 have passed away from complications due to COVID-19 infection.

Related link: [List of public places visited by confirmed cases in the community during Infectious Period](#)

For more details, refer to MOH's [press release](#).

TOPICS

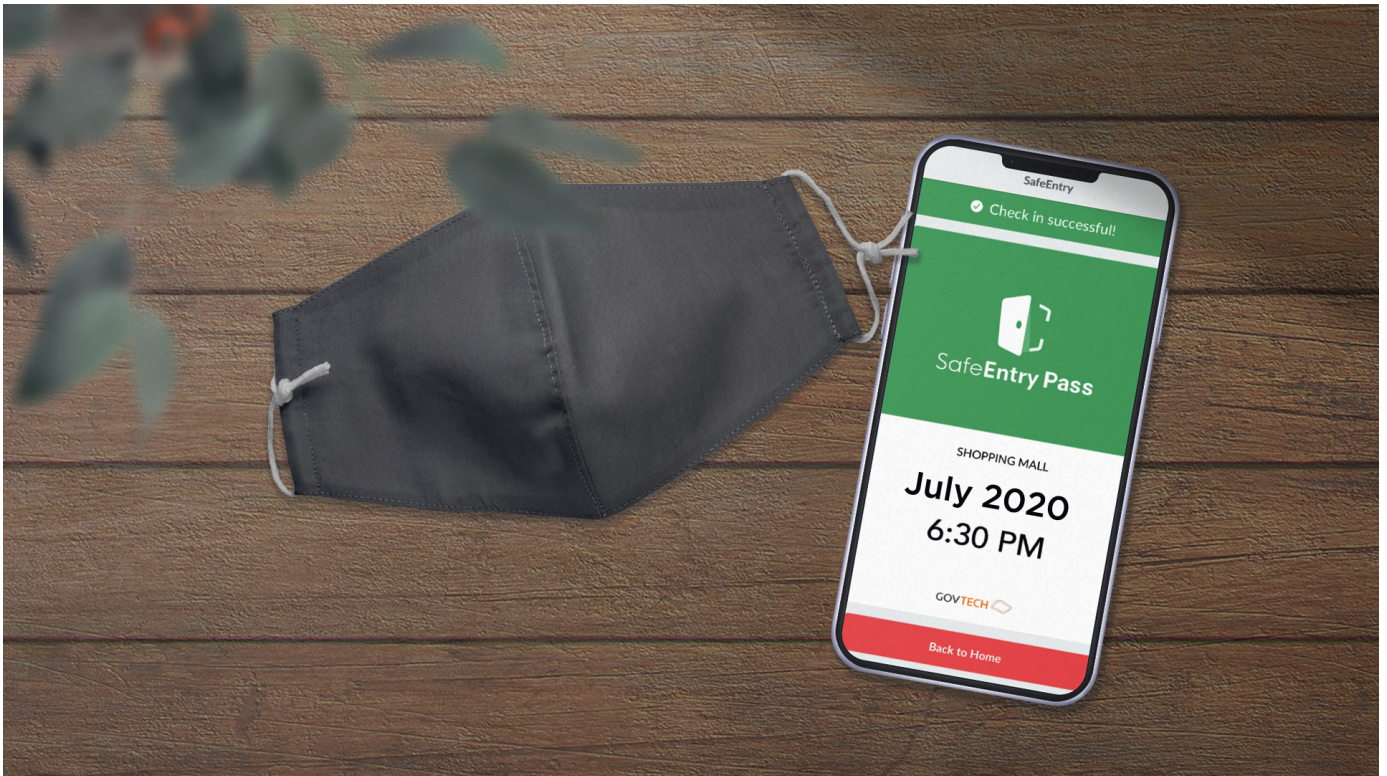
HEALTH

COVID-19

Share:      | 

PART OF A SPECIAL FEATURE

COVID-19 (Coronavirus Disease 2019)



EXPLORE 

RELATED ARTICLES



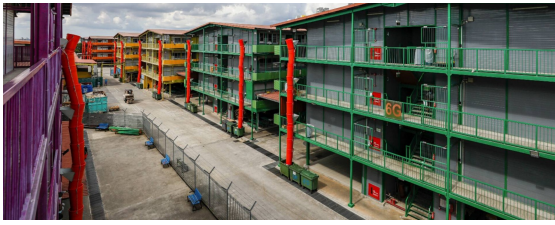
COVID-19: Updates and announcements



An update on community cases, controls of COVID-19 infection in Phase 2



Clarification regarding falsehood published by the National University of Singapore Society (NUSS), The Online Citizen Asia (TOC), CNA and New Naratif on MOM's advi... migrant workers



migrant workers



COVID-19: Advisories for Various Sectors



COVID-19 Resources

Is this page useful? [Yes](#) • [No](#)

[Is there anything wrong with this page?](#)

Most Popular

Moving into Phase 2: What activities can resume

Public Places Visited by Cases in the Community during Infectious Period

Updates to border measures for travellers entering Singapore

Ending circuit breaker: phased approach to resuming activities safely

A home for everyone: Maintaining the quality and value of your flat

[Contact](#)

[FAQ](#)

[Privacy Statement](#)

[Terms of Use](#)

[Rate This Website](#)

[Report Vulnerability](#)



This site is best viewed using IE9.039 & above and Chrome.

© 2020 Government of Singapore Last updated on 07 Jul 2020