

Share :      | 

Listen

As of 8 July 2020, 12pm, the Ministry of Health (MOH) has confirmed 158 new cases of COVID-19 infection in Singapore.

Among the cases:

- Imported case: 3
  - 1 Singaporean, 2 Dependant's Pass holders

Amongst the 3 imported cases, 2 are Indian nationals who are Dependant's Pass holders, and have returned to Singapore from India on 26 June. The remaining case is a Singaporean who returned to Singapore from the Philippines on 26 June. All of them had been placed on 14-day Stay-Home Notice (SHN) upon arrival in Singapore, and had been tested while serving their SHN.

- Cases in the community: 9
  - 4 Singaporeans/PRs, 2 Work Pass holders, 3 Work Permit Holders

Of the 9 cases in the community, 4 were picked up as a result of MOH proactive surveillance & screening, and 2 had been placed on quarantine earlier. 3 of the community cases today are linked to previous cases or clusters.

- Cases residing in dormitories: 146

Of the new cases, 96% are linked to known clusters, the rest are pending contact tracing.

321 more cases of COVID-19 infection have been discharged from hospitals or community isolation facilities. To date, 41,323 have fully recovered from the infection and have been discharged from hospitals or community isolation facilities.

Most of the 215 confirmed cases who are still in hospital are stable or improving. 1 is in critical condition in the intensive care unit.

3,734 cases who have mild symptoms, or are clinically well but still test positive for COVID-19 are isolated and cared for at community facilities.

26 have passed away from complications due to COVID-19 infection.

Related link: [List of public places visited by confirmed cases in the community during Infectious Period](#)

For more details, refer to MOH's [press release](#).

TOPICS

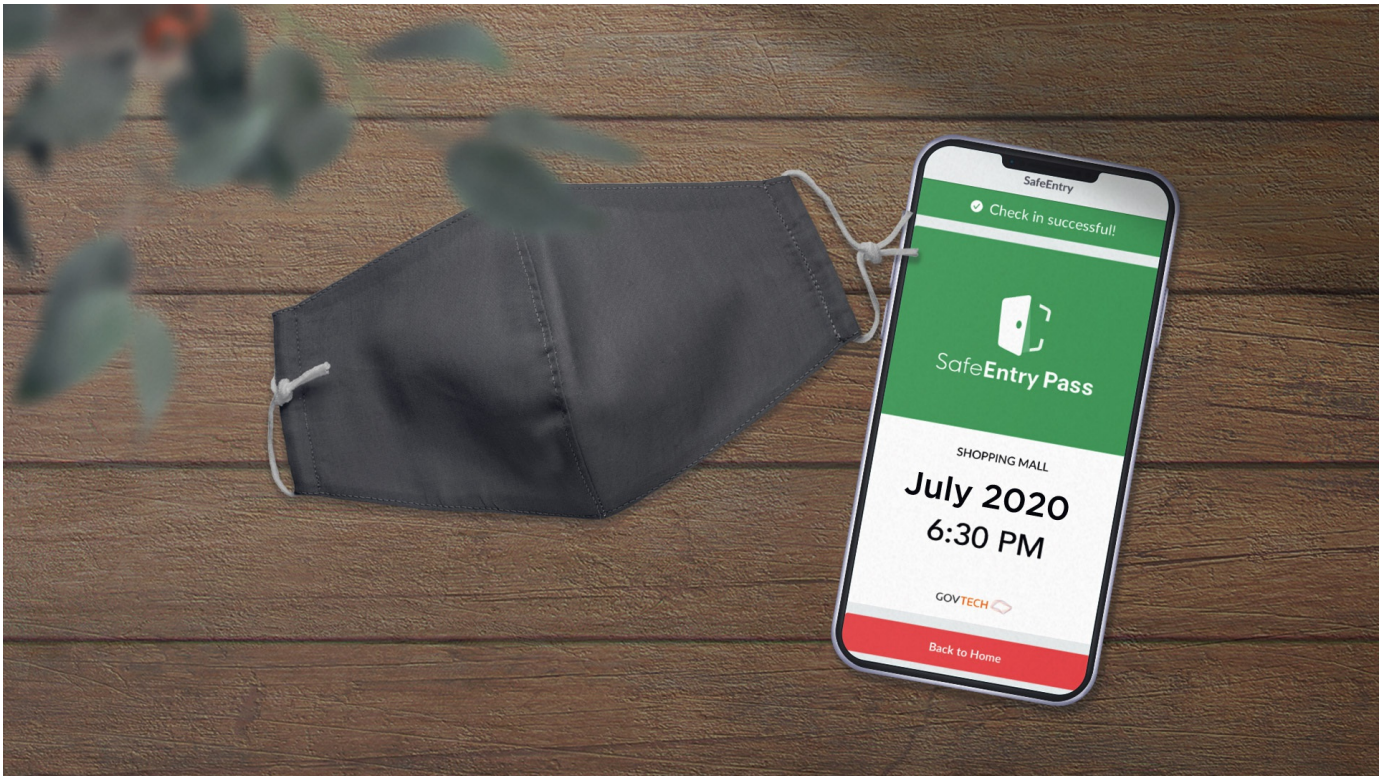
HEALTH

COVID-19

Share:      | 

PART OF A SPECIAL FEATURE

### COVID-19 (Coronavirus Disease 2019)



[EXPLORE](#) 

RELATED ARTICLES



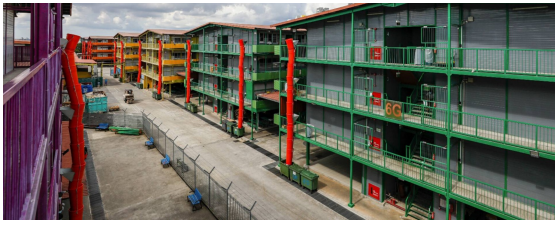
[COVID-19: Updates and announcements](#)



[An update on community cases, controls of COVID-19 infection in Phase 2](#)



[Clarification regarding falsehood published by the National University of Singapore Society \(NUSS\), The Online Citizen Asia \(TOC\), CNA and New Naratif on MOM's advi... migrant workers](#)



migrant workers



COVID-19: Advisories for Various Sectors



COVID-19 Resources

Is this page useful? [Yes](#) • [No](#)

[Is there anything wrong with this page?](#)

## Most Popular

---

Moving into Phase 2: What activities can resume

---

Public Places Visited by Cases in the Community during Infectious Period

---

Updates to border measures for travellers entering Singapore

---

Ending circuit breaker: phased approach to resuming activities safely

---

A home for everyone: Maintaining the quality and value of your flat

[Contact](#)

[FAQ](#)

[Privacy Statement](#)

[Terms of Use](#)

[Rate This Website](#)

[Report Vulnerability](#)



This site is best viewed using IE9.039 & above and Chrome.

© 2020 Government of Singapore Last updated on 08 Jul 2020