

Share :      | 

Listen

As of 10 July 2020, 12pm, the Ministry of Health (MOH) has confirmed 191 new cases of COVID-19 infection in Singapore.

Among the cases:

- Imported case: 1
 - 1 Permanent Resident

There is an imported case today involving a Singapore Permanent Resident who returned to Singapore from India on 6 July. She had been placed on 14-day Stay-Home Notice (SHN) upon arrival in Singapore, and had been tested while serving SHN.

- Cases in the community: 16
 - 7 Singaporeans, 5 Work Pass holders, 4 Work Permit Holders

Of the 16 cases in the community, 5 were picked up as a result of MOH's proactive surveillance and screening, and 8 had already been placed on quarantine earlier. 10 of the cases are asymptomatic, and were all detected through our proactive testing. 8 of the community cases are linked to previous cases or clusters.

- Cases residing in dormitories: 174

Of the new cases, 94% are linked to known clusters, the rest are pending contact tracing.

135 more cases of COVID-19 infection have been discharged from hospitals or community isolation facilities. To date, 41,780 have fully recovered from the infection and have been discharged from hospitals or community isolation facilities.

Most of the 203 confirmed cases who are still in hospital are stable or improving. 1 is in critical condition in the intensive care unit.

3,604 cases who have mild symptoms, or are clinically well but still test positive for COVID-19 are isolated and cared for at community facilities.

26 have passed away from complications due to COVID-19 infection.

Related link: [List of public places visited by confirmed cases in the community during Infectious Period](#)

For more details, refer to MOH's [press release](#).

TOPICS

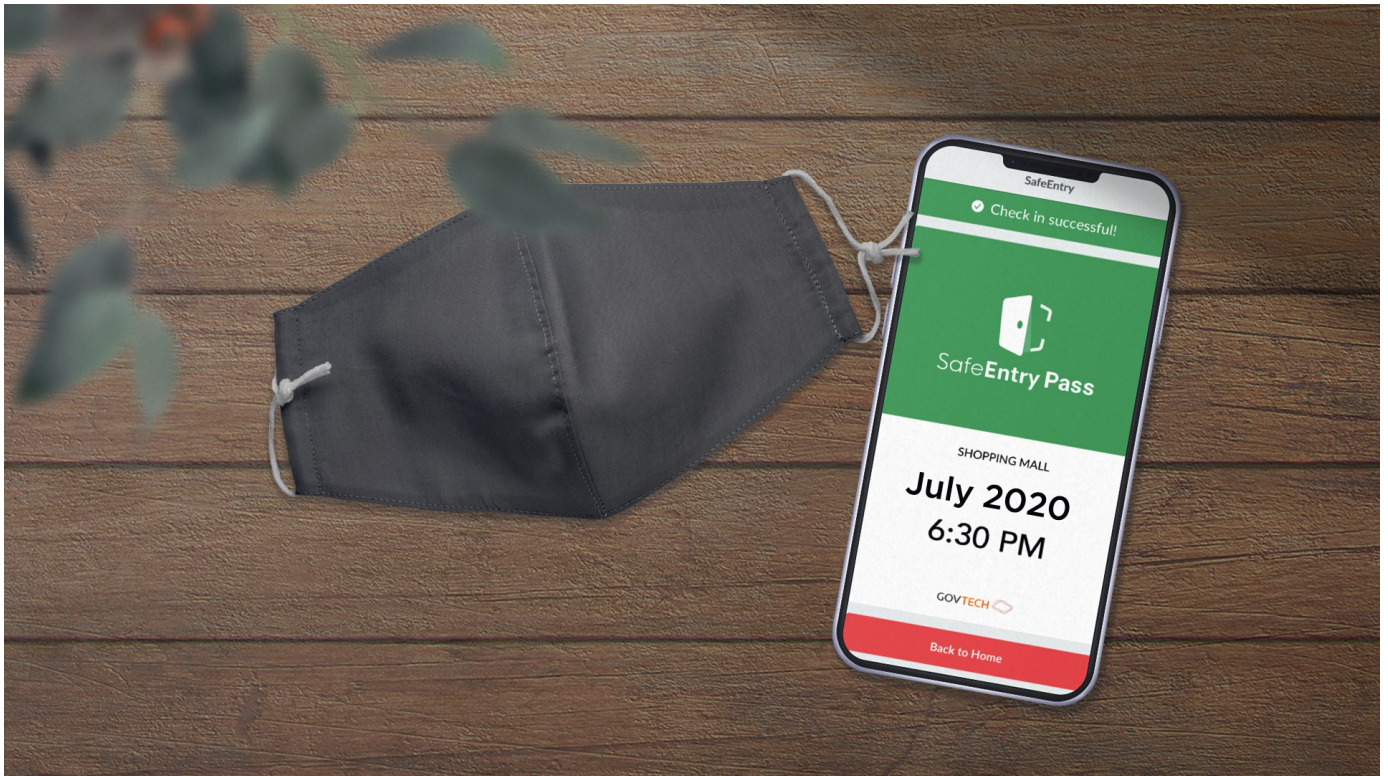
HEALTH

COVID-19

Share:      | 

PART OF A SPECIAL FEATURE

COVID-19 (Coronavirus Disease 2019)



[EXPLORE](#) 

RELATED ARTICLES



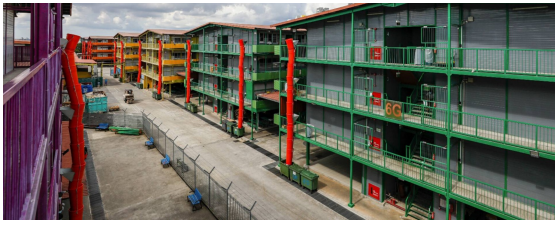
[COVID-19: Updates and announcements](#)



[An update on community cases, controls of COVID-19 infection in Phase 2](#)



[Clarification regarding falsehood published by the National University of Singapore Society \(NUSS\), The Online Citizen Asia \(TOC\), CNA and New Naratif on MOM's advi... migrant workers](#)



migrant workers



COVID-19: Advisories for Various Sectors



COVID-19 Resources

Is this page useful? [Yes](#) • [No](#)

[Is there anything wrong with this page?](#)

Most Popular

Moving into Phase 2: What activities can resume

Public Places Visited by Cases in the Community during Infectious Period

Updates to border measures for travellers entering Singapore

Ending circuit breaker: phased approach to resuming activities safely

A home for everyone: Maintaining the quality and value of your flat

[Contact](#)

[FAQ](#)

[Privacy Statement](#)

[Terms of Use](#)

[Rate This Website](#)

[Report Vulnerability](#)



This site is best viewed using IE9.039 & above and Chrome.

© 2020 Government of Singapore Last updated on 10 Jul 2020