

Share :      | 

Listen

As of 16 July 2020, 12pm, the Ministry of Health (MOH) has confirmed 248 new cases of COVID-19 infection in Singapore.

Among the cases:

- Imported case: **4**
 - 3 Singaporeans/ Permanent Residents, 1 Work Pass holder

Amongst the 4 imported cases, 3 are Singaporeans/ Permanent Residents who returned from the USA on 3 July and Azerbaijan on 4 July. The remaining case is a Work Pass holder who is currently employed in Singapore. She arrived in Singapore from Indonesia on 4 July. All of them had been placed on 14-day Stay-Home Notice (SHN) upon arrival in Singapore, and had been tested while serving their SHN.

- Cases in the community: **11**
 - 2 Singaporeans, 5 Work Pass holders, 2 Work Permit holders, 2 Dependant's Pass holders

Of the 11 cases in the community, 8 were picked up as a result of proactive surveillance and screening, and 2 had already been placed on quarantine earlier. 5 of the community cases today are linked to previous cases or clusters.

Overall, the number of new cases in the community has decreased, from an average of 16 cases per day in the week before, to an average of 12 per day in the past week. The number of unlinked cases in the community has also decreased, from an average of 8 cases per day in the week before, to an average of 7 per day in the past week.

- Cases residing in dormitories: **233**

Of the new cases, 96% are linked to known clusters, the rest are pending contact tracing.

268 more cases of COVID-19 infection have been discharged from hospitals or community isolation facilities. To date, 43,256 have fully recovered from the infection and have been discharged from hospitals or community isolation facilities.

Most of the 146 confirmed cases who are still in hospital are stable or improving. None are in the intensive care unit.

3,697 cases who have mild symptoms, or are clinically well but still test positive for COVID-19 are isolated and cared for at community facilities.

27 have passed away from complications due to COVID-19 infection.

Related link: [List of public places visited by confirmed cases in the community during Infectious Period](#)

For more details, refer to MOH's [press release](#).

TOPICS

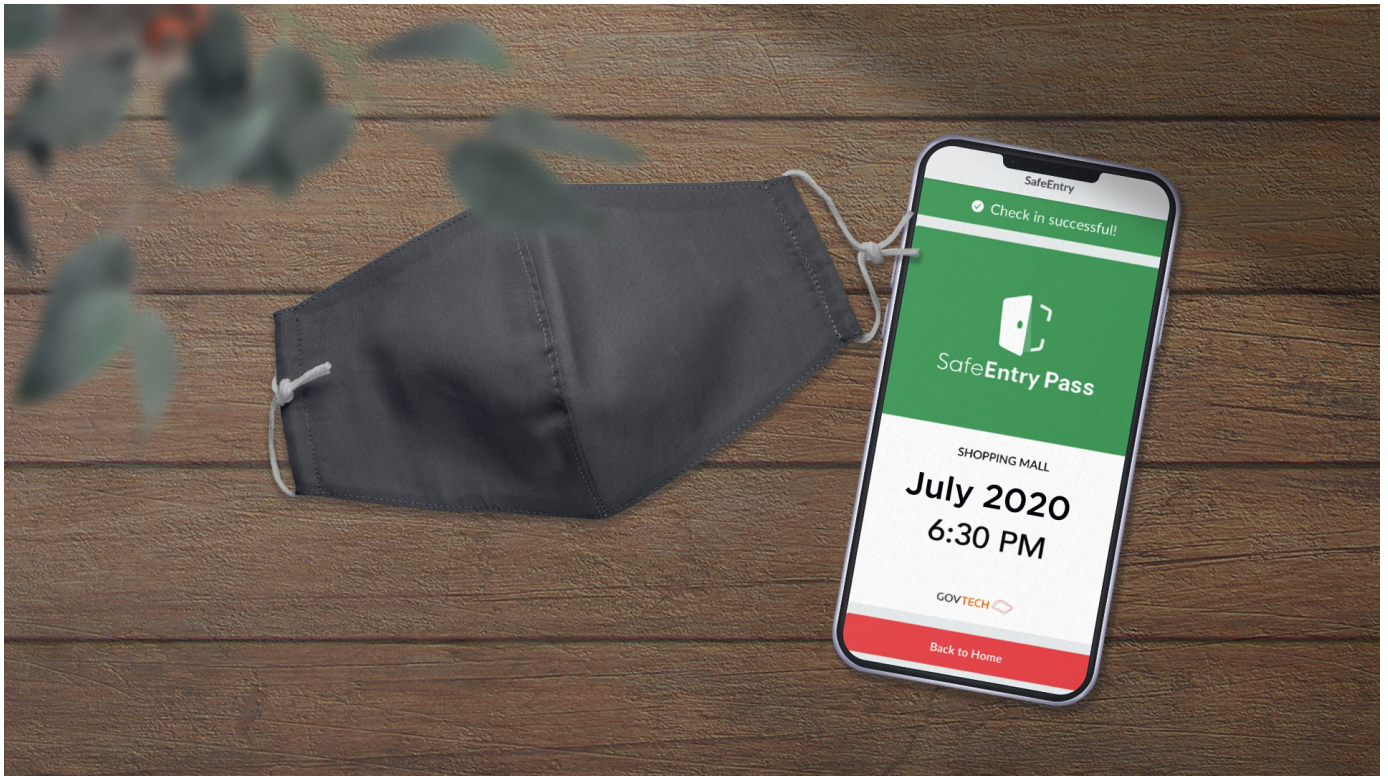
HEALTH

COVID-19

Share: [!\[\]\(339a16584d5da0f0a3ca4e9ec17bf6a1_img.jpg\)](#) [!\[\]\(e06a1d39938b2f5d7a2c3618fea4f77f_img.jpg\)](#) [!\[\]\(23ac9e28f2600a1e787d149d7f76716a_img.jpg\)](#) [!\[\]\(ba1ec627dd10668218bdb3f2bf103f06_img.jpg\)](#) [!\[\]\(6f1d0d0a8d23d26f9f12e58b619db524_img.jpg\)](#) | [!\[\]\(46b6093e477a99fcf269923165e83418_img.jpg\)](#)

PART OF A SPECIAL FEATURE

COVID-19 (Coronavirus Disease 2019)

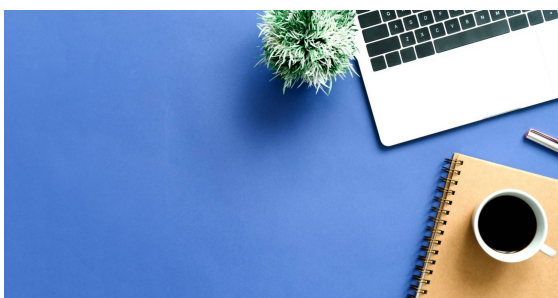


[EXPLORE](#) 

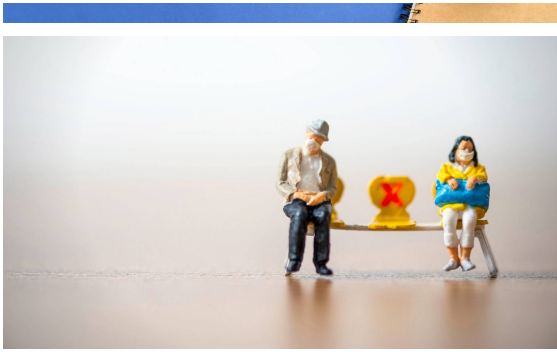
RELATED ARTICLES



[COVID-19: Updates and announcements](#)



[Gov.sg How-Tos: How to keep safe if you must return to the office](#)



An update on community cases, controls of COVID-19 infection in Phase 2



Clarification regarding falsehood published by the National University of Singapore Society (NUSS), The Online Citizen Asia (TOC), CNA and New Naratif on MOM's advi... migrant workers migrant workers



COVID-19: Advisories for Various Sectors

Is this page useful? [Yes](#) · [No](#)

[Is there anything wrong with this page?](#)

Most Popular

Gov.sg How-Tos: How to keep safe when you dine out

Gov.sg How-Tos: How to keep safe when gathering with loved ones

Moving into Phase 2: What activities can resume

Public Places Visited by Cases in the Community during Infectious Period

Updates to border measures for travellers entering Singapore



[Who We Are](#)

[Contact](#)

[FAQ](#)

[Privacy Statement](#)

[Terms of Use](#)

[Rate This Website](#)

[Report Vulnerability](#)



This site is best viewed using IE9.039 & above and Chrome.

© 2020 Government of Singapore Last updated on 16 Jul 2020