

Share :      | 

Listen

As of 17 July 2020, 12pm, the Ministry of Health (MOH) has confirmed 327 new cases of COVID-19 infection in Singapore.

Among the cases:

- Imported case: **3**
 - 1 Singaporean, 1 Dependant's Pass holder, 1 Long-Term Visit Pass holder

Amongst the 3 imported cases, 1 is a Singaporean who returned from the Philippines on 6 July. The remaining cases are children who are Dependant's Pass or Long-Term Visit Pass holders who arrived in Singapore from India on 26 June and 15 July. All of them had been placed on 14-day Stay-Home Notice (SHN) upon arrival in Singapore, and had been tested while serving their SHN.

- Cases in the community: **9**
 - 6 Singaporeans, 2 Work Pass holders, 1 Work Permit holder

Of the 9 cases in the community, 1 was picked up as a result of proactive surveillance and screening, and 4 had already been placed on quarantine earlier. 8 of the community cases today are linked to previous cases or clusters.

Overall, the number of new cases in the community has decreased, from an average of 16 cases per day in the week before, to an average of 11 per day in the past week. The number of unlinked cases in the community has also decreased, from an average of 8 cases per day in the week before, to an average of 6 per day in the past week.

- Cases residing in dormitories: **315**

Of the new cases, 99% are linked to known clusters, the rest are pending contact tracing.

321 more cases of COVID-19 infection have been discharged from hospitals or community isolation facilities. To date, 43,577 have fully recovered from the infection and have been discharged from hospitals or community isolation facilities.

Most of the 165 confirmed cases who are still in hospital are stable or improving. None are in the intensive care unit.

3,684 cases who have mild symptoms, or are clinically well but still test positive for COVID-19 are isolated and cared for at community facilities.

27 have passed away from complications due to COVID-19 infection.

Related link: [List of public places visited by confirmed cases in the community during Infectious Period](#)

For more details, refer to MOH's [press release](#).

TOPICS

HEALTH

COVID-19

Share: [!\[\]\(339a16584d5da0f0a3ca4e9ec17bf6a1_img.jpg\)](#) [!\[\]\(e06a1d39938b2f5d7a2c3618fea4f77f_img.jpg\)](#) [!\[\]\(23ac9e28f2600a1e787d149d7f76716a_img.jpg\)](#) [!\[\]\(ba1ec627dd10668218bdb3f2bf103f06_img.jpg\)](#) [!\[\]\(6f1d0d0a8d23d26f9f12e58b619db524_img.jpg\)](#) | [!\[\]\(46b6093e477a99fcf269923165e83418_img.jpg\)](#)

PART OF A SPECIAL FEATURE

COVID-19 (Coronavirus Disease 2019)

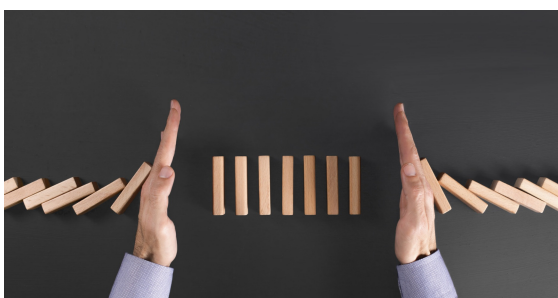


EXPLORE 

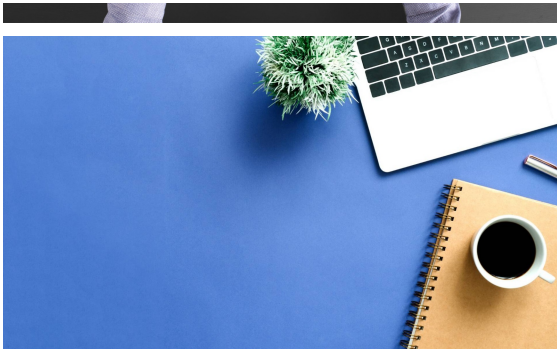
RELATED ARTICLES



COVID-19: Updates and announcements



COVID-19: Keeping our guard up to avoid a resurgence of cases



Gov.sg How-Tos: How to keep safe if you must return to the office



An update on community cases, controls of COVID-19 infection in Phase 2



Clarification regarding falsehood published by the National University of Singapore Society (NUSS), The Online Citizen Asia (TOC), CNA and New Naratif on MOM's advi... migrant workers migrant workers

Is this page useful? [Yes](#) · [No](#)

[Is there anything wrong with this page?](#)

Most Popular

Gov.sg How-Tos: How to keep safe when you dine out

Gov.sg How-Tos: How to keep safe when gathering with loved ones

Moving into Phase 2: What activities can resume

Public Places Visited by Cases in the Community during Infectious Period

Updates to border measures for travellers entering Singapore



[Who We Are](#)

[Contact](#)

[FAQ](#)

[Privacy Statement](#)

[Terms of Use](#)

[Rate This Website](#)

[Report Vulnerability](#)



This site is best viewed using IE9.039 & above and Chrome.

© 2020 Government of Singapore Last updated on 17 Jul 2020