

Share :      | 

Listen

As of 18 July 2020, 12pm, the Ministry of Health (MOH) has confirmed 202 new cases of COVID-19 infection in Singapore.

Among the cases:

- Imported case: 8
 - 2 Singaporeans/Permanent Residents, 4 Work Pass holders, 1 Dependant's Pass holder, 1 Special Pass holder

Amongst the 8 imported cases, 2 are Singaporeans/ Permanent Residents who returned to Singapore from India on 6 July and from Pakistan on 4 July. 4 cases are Work Pass holders who are currently employed in Singapore. Another case is a Dependant's Pass holder. They arrived in Singapore from India between 6 July and 15 July. All 7 of them had been placed on 14-day Stay-Home Notice (SHN) upon arrival in Singapore, and had been tested while serving their SHN.

The remaining case had arrived in Singapore from the Philippines on 16 July, and was conveyed directly to the National Centre for Infectious Diseases as he was symptomatic. He is a sailor currently holding a Special Pass who will join a vessel that called in our Port.

- Cases in the community: 7
 - 5 Singaporeans/Permanent Residents, 1 Work Permit holder, 1 Student's Pass holder

Of the 7 cases in the community, 3 were picked up as a result of proactive surveillance and screening, and 1 had already been placed on quarantine earlier. 3 of the community cases today are linked to previous cases or clusters.

Overall, the number of new cases in the community has decreased, from an average of 18 cases per day in the week before, to an average of 9 per day in the past week. The number of unlinked cases in the community has also decreased, from an average of 9 cases per day in the week before, to an average of 5 per day in the past week.

- Cases residing in dormitories: 187

Of the new cases, 97% are linked to known clusters, the rest are pending contact tracing.

256 more cases of COVID-19 infection have been discharged from hospitals or community isolation facilities. To date, 43,833 have fully recovered from the infection and have been discharged from hospitals or community isolation facilities.

Most of the 169 confirmed cases who are still in hospital are stable or improving. None are in the intensive care unit.

3,626 cases who have mild symptoms, or are clinically well but still test positive for COVID-19 are isolated and cared for at

community facilities.

27 have passed away from complications due to COVID-19 infection.

Related link: [List of public places visited by confirmed cases in the community during Infectious Period](#)

For more details, refer to MOH's [press release](#).

TOPICS

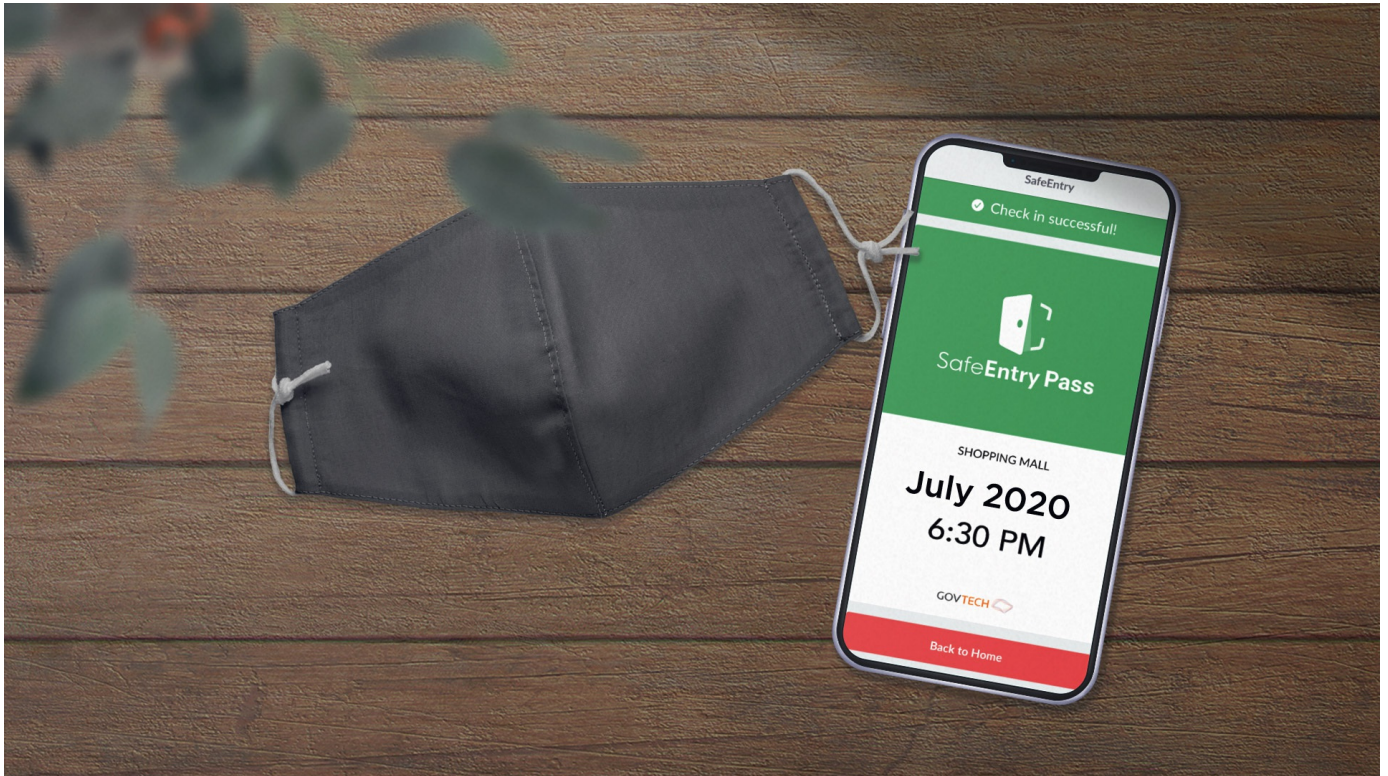
HEALTH

COVID-19

Share :      | 

PART OF A SPECIAL FEATURE

COVID-19 (Coronavirus Disease 2019)

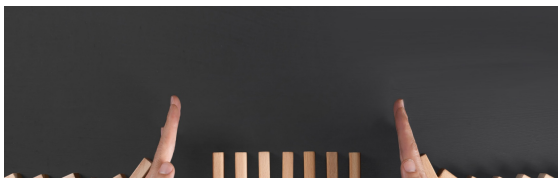


EXPLORE 

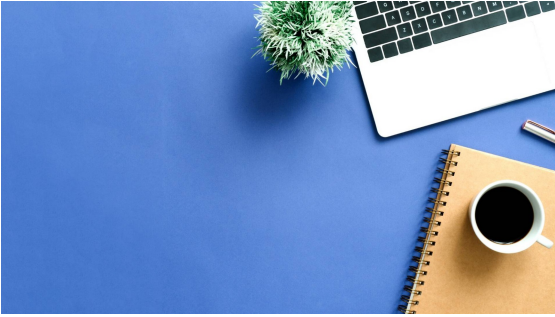
RELATED ARTICLES



COVID-19: Updates and announcements



COVID-19: Keeping our guard up to avoid a resurgence of cases



Gov.sg How-Tos: How to keep safe if you must return to the office



An update on community cases, controls of COVID-19 infection in Phase 2



Clarification regarding falsehood published by the National University of Singapore Society (NUSS), The Online Citizen Asia (TOC), CNA and New Naratif on MOM's advi... migrant workers

Is this page useful? [Yes](#) • [No](#)

[Is there anything wrong with this page?](#)

Most Popular

Gov.sg How-Tos: How to keep safe when you dine out

Gov.sg How-Tos: How to keep safe when gathering with loved ones

Moving into Phase 2: What activities can resume

Public Places Visited by Cases in the Community during Infectious Period

Updates to border measures for travellers entering Singapore

[Who We Are](#)

[Contact](#)

[FAQ](#)

[Privacy Statement](#)

[Terms of Use](#)

[Rate This Website](#)

[Report Vulnerability](#)



This site is best viewed using IE9.039 & above and Chrome.

© 2020 Government of Singapore Last updated on 18 Jul 2020