

Share :      | 

Listen

As of 20 July 2020, 12pm, the Ministry of Health (MOH) has confirmed 123 new cases of COVID-19 infection in Singapore.

Among the cases:

- Imported case: **2**
 - 1 Work Pass holder, 1 Work Permit holder

Amongst the imported cases, both are Work Pass holders currently employed in Singapore, arrived in Singapore from the Philippines on 8 July. They had been placed on 14-day Stay-Home Notice (SHN) upon arrival in Singapore, and had been tested while serving their SHN.

- Cases in the community: **11**
 - 5 Singaporeans, 1 Work Pass holder, 5 Work Permit holders

Of the 11 cases in the community, 9 were picked up as a result of proactive surveillance and screening, and 2 had already been placed on quarantine earlier. 6 of the community cases today are linked to previous cases or clusters.

Overall, the number of new cases in the community has decreased, from an average of 14 cases per day in the week before, to an average of 10 per day in the past week. The number of unlinked cases in the community has also decreased, from an average of 8 cases per day in the week before, to an average of 5 per day in the past week.

- Cases residing in dormitories: **110**

Of the new cases, 93% are linked to known clusters, the rest are pending contact tracing.

285 more cases of COVID-19 infection have been discharged from hospitals or community isolation facilities. To date, 44,371 have fully recovered from the infection and have been discharged from hospitals or community isolation facilities.

Most of the 183 confirmed cases who are still in hospital are stable or improving. None are in the intensive care unit.

3,454 cases who have mild symptoms, or are clinically well but still test positive for COVID-19 are isolated and cared for at community facilities.

27 have passed away from complications due to COVID-19 infection.

Related link: [List of public places visited by confirmed cases in the community during Infectious Period](#)

For more details, refer to MOH's [press release](#).

TOPICS

HEALTH

COVID-19

Share: [!\[\]\(0f848bbd71cef6b345273b16f905912a_img.jpg\)](#) [!\[\]\(d873c0073cfd3b74a7c9b5ca09bad0c7_img.jpg\)](#) [!\[\]\(9126fbb278b6412ee8b215b5e71dadba_img.jpg\)](#) [!\[\]\(bb3ac0ef9759920456d29214b9245205_img.jpg\)](#) [!\[\]\(68dcb7f31ce1e4d333f7ed1f91a944e1_img.jpg\)](#) | [!\[\]\(5d28b5dfc45df270732efdd834e7eec3_img.jpg\)](#)

PART OF A SPECIAL FEATURE

COVID-19 (Coronavirus Disease 2019)

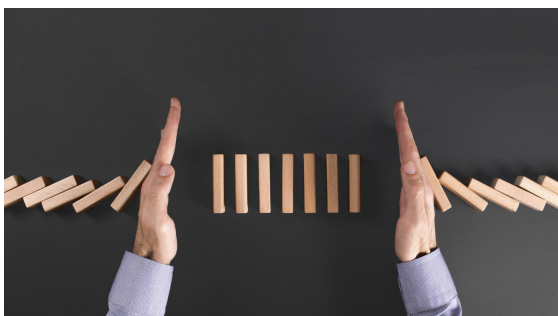


[EXPLORE](#) 

RELATED ARTICLES



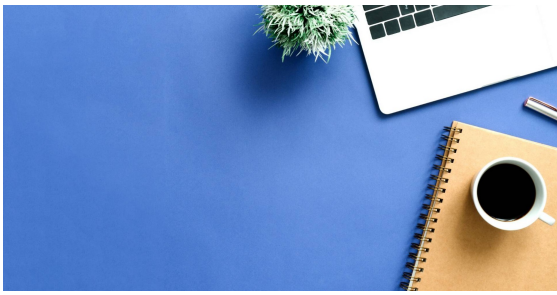
[COVID-19: Updates and announcements](#)



[COVID-19: Keeping our guard up to avoid a resurgence of cases](#)



[Gov.sg How-Tos: How to keep safe if you must return to the](#)



office



An update on community cases, controls of COVID-19 infection in Phase 2



Clarification regarding falsehood published by the National University of Singapore Society (NUSS), The Online Citizen Asia (TOC), CNA and New Naratif on MOM's advi... migrant workers

Is this page useful? [Yes](#) • [No](#)

[Is there anything wrong with this page?](#)

Most Popular

Gov.sg How-Tos: How to keep safe when you dine out

Gov.sg How-Tos: How to keep safe when gathering with loved ones

Moving into Phase 2: What activities can resume

Public Places Visited by Cases in the Community during Infectious Period

Updates to border measures for travellers entering Singapore

[Who We Are](#)

[Contact](#)

[FAQ](#)

[Privacy Statement](#)

[Terms of Use](#)

[Rate This Website](#)

[Report Vulnerability](#)



This site is best viewed using IE9.039 & above and Chrome.

© 2020 Government of Singapore Last updated on 20 Jul 2020