

Share :      | 

Listen

As of 21 July 2020, 12pm, the Ministry of Health (MOH) has confirmed 399 new cases of COVID-19 infection in Singapore.

Among the cases:

- Imported case: **3**
  - 2 Work Pass holders, 1 Special Pass holder

Amongst the imported cases, 2 arrived in Singapore from India on 9 July. They are Work Pass holders who are currently employed in Singapore. They had been placed on 14-day Stay-Home Notice (SHN) upon arrival in Singapore, and had been tested while serving their SHN.

- Cases in the community: **9**
  - 1 Singaporean, 3 Work Pass holders, 5 Work Permit holders

Of the 9 cases in the community, 7 were picked up as a result of our proactive surveillance and screening, and 2 had already been placed on quarantine earlier. 8 of the cases are asymptomatic, and were detected through our proactive testing.

Overall, the number of new cases in the community has decreased, from an average of 13 cases per day in the week before, to an average of 10 per day in the past week. The number of unlinked cases in the community has also decreased, from an average of 7 cases per day in the week before, to an average of 6 per day in the past week.

- Cases residing in dormitories: **387**

Of the new cases, 96% are linked to known clusters, the rest are pending contact tracing.

213 more cases of COVID-19 infection have been discharged from hospitals or community isolation facilities. To date, 44,584 have fully recovered from the infection and have been discharged from hospitals or community isolation facilities.

Most of the 170 confirmed cases who are still in hospital are stable or improving. None are in the intensive care unit.

3,653 cases who have mild symptoms, or are clinically well but still test positive for COVID-19 are isolated and cared for at community facilities.

27 have passed away from complications due to COVID-19 infection.

Related link: [List of public places visited by confirmed cases in the community during Infectious Period](#)

For more details, refer to MOH's [press release](#).

## TOPICS

HEALTH

COVID-19

Share: [!\[\]\(339a16584d5da0f0a3ca4e9ec17bf6a1\_img.jpg\)](#) [!\[\]\(e06a1d39938b2f5d7a2c3618fea4f77f\_img.jpg\)](#) [!\[\]\(23ac9e28f2600a1e787d149d7f76716a\_img.jpg\)](#) [!\[\]\(ba1ec627dd10668218bdb3f2bf103f06\_img.jpg\)](#) [!\[\]\(6f1d0d0a8d23d26f9f12e58b619db524\_img.jpg\)](#) | [!\[\]\(46b6093e477a99fcf269923165e83418\_img.jpg\)](#)

**PART OF A SPECIAL FEATURE**

## COVID-19 (Coronavirus Disease 2019)

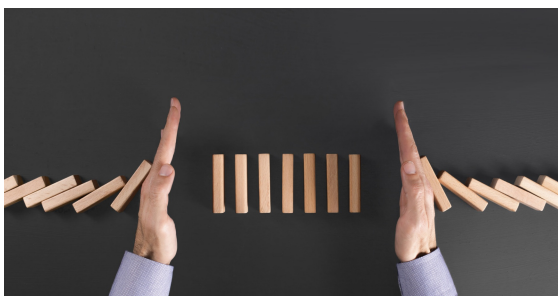


**EXPLORE** [!\[\]\(6059a5aa8b4ca7bb793408023d6c6e42\_img.jpg\)](#)

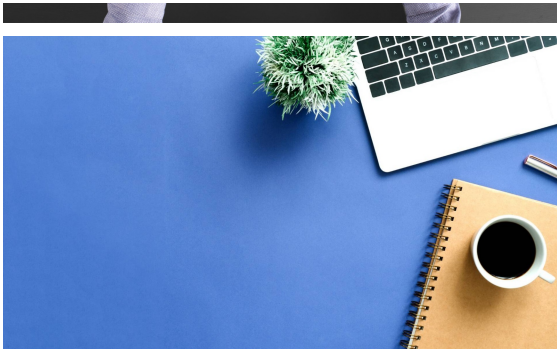
## RELATED ARTICLES



[COVID-19: Updates and announcements](#)



[COVID-19: Keeping our guard up to avoid a resurgence of cases](#)



Gov.sg How-Tos: How to keep safe if you must return to the office



An update on community cases, controls of COVID-19 infection in Phase 2



Clarification regarding falsehood published by the National University of Singapore Society (NUSS), The Online Citizen Asia (TOC), CNA and New Naratif on MOM's advi... migrant workers migrant workers

Is this page useful? [Yes](#) · [No](#)

[Is there anything wrong with this page?](#)

## Most Popular

---

Gov.sg How-Tos: How to keep safe when you dine out

---

Gov.sg How-Tos: How to keep safe when gathering with loved ones

---

Moving into Phase 2: What activities can resume

---

Public Places Visited by Cases in the Community during Infectious Period

---

Updates to border measures for travellers entering Singapore



[Who We Are](#)

[Contact](#)

[FAQ](#)

[Privacy Statement](#)

[Terms of Use](#)

[Rate This Website](#)

[Report Vulnerability](#)



This site is best viewed using IE9.039 & above and Chrome.

© 2020 Government of Singapore Last updated on 21 Jul 2020