

Share :      | 

Listen

As of 27 July 2020, 12pm, the Ministry of Health (MOH) has confirmed 469 new cases of COVID-19 infection in Singapore.

Among the cases:

- Imported case: **15**
  - 2 Singaporeans/Permanent Residents, 2 Work Permit holders

Amongst the 15 imported cases, 2 are Singaporeans who returned to Singapore from India on 15 July. Another 11 cases are Work Pass or Work Permit holders who are currently employed in Singapore. They arrived in Singapore from India or the Philippines between 14 July and 15 July. Another 2 cases are Dependant's Pass holders who arrived from India on 12 July and 14 July.

All of them had been placed on 14-day Stay-Home Notice (SHN) upon arrival in Singapore, and had been tested while serving their SHN.

- Cases in the community: **2**
  - 1 Singaporean, 1 Work Pass holder

Both cases in the community are linked to previous cases or clusters.

Overall, the number of new cases in the community has decreased, from an average of 10 cases per day in the week before, to an average of 5 per day in the past week. The number of unlinked cases in the community has also decreased, from an average of 5 cases per day in the week before, to an average of 3 per day in the past week.

- Cases residing in dormitories: **452**

Of the new cases, 99% are linked to known clusters, the rest are pending contact tracing.

171 more cases of COVID-19 infection have been discharged from hospitals or community isolation facilities. To date, 45,692 have fully recovered from the infection and have been discharged from hospitals or community isolation facilities.

Most of the 179 confirmed cases who are still in hospital are stable or improving. None is in the intensive care unit.

4,940 cases who have mild symptoms, or are clinically well but still test positive for COVID-19 are isolated and cared for at community facilities.

27 have passed away from complications due to COVID-19 infection.

Related link: [List of public places visited by confirmed cases in the community during Infectious Period](#)

For more details, refer to MOH's [press release](#).

## TOPICS

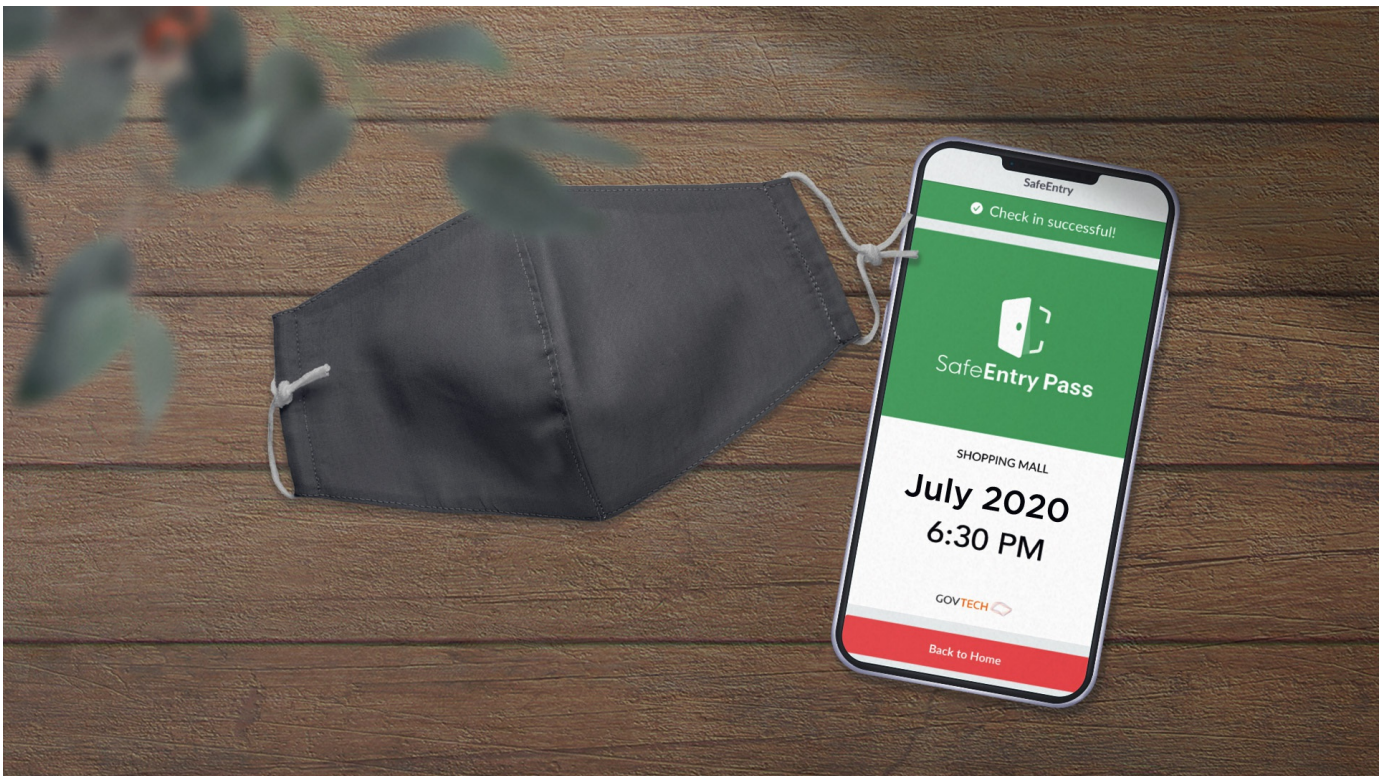
HEALTH

## COVID-19

Share: [f](#) [t](#) [in](#) [w](#) [e](#) | [p](#)

### PART OF A SPECIAL FEATURE

## COVID-19 (Coronavirus Disease 2019)



EXPLORE [➔](#)

## RELATED ARTICLES



COVID-19: Updates and announcements



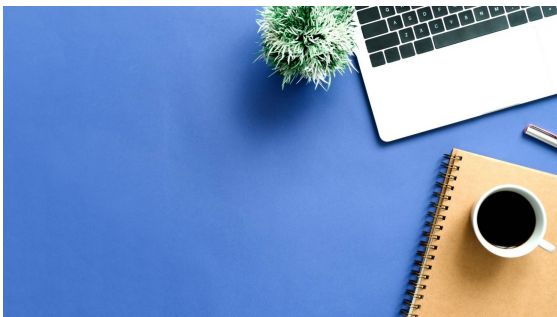
Enhanced surveillance and enforcement efforts in Phase 2



COVID-19: Advisories for Various Sectors



COVID-19: Keeping our guard up to avoid a resurgence of cases



Gov.sg How-Tos: How to keep safe if you must return to the office

Is this page useful? [Yes](#) • [No](#)

[Is there anything wrong with this page?](#)

## Most Popular

---

Gov.sg How-Tos: How to keep safe when you dine out

---

Gov.sg How-Tos: How to keep safe when gathering with loved ones

---

Moving into Phase 2: What activities can resume

---

Public Places Visited by Cases in the Community during Infectious Period

---

Updates to border measures for travellers entering Singapore



[Who We Are](#)

[Contact](#)

[FAQ](#)

[Privacy Statement](#)

[Terms of Use](#)

[Rate This Website](#)

[Report Vulnerability](#)



This site is best viewed using IE9.039 & above and Chrome.

© 2020 Government of Singapore Last updated on 27 Jul 2020