

Share :      | 

Listen

As of 28 July 2020, 12pm, the Ministry of Health (MOH) has confirmed 359 new cases of COVID-19 infection in Singapore.

Among the cases:

- Imported case: 2
 - 1 Work Pass holder, 1 Dependant's Pass holder

Both imported cases arrived in Singapore from India on 12 July and 13 July. One is a Work Pass holder who is currently employed in Singapore, while the other is a Dependant's Pass holder.

Both had been placed on 14-day Stay-Home Notice (SHN) upon arrival in Singapore, and had been tested while serving their SHN.

- Cases in the community: 1
 - 1 Work Pass holder

He was linked to a previously confirmed case, and had been placed on quarantine earlier.

Overall, the number of new cases in the community has decreased, from an average of 10 cases per day in the week before, to an average of 4 per day in the past week. The number of unlinked cases in the community has also decreased, from an average of 5 cases per day in the week before, to an average of 2 per day in the past week.

- Cases residing in dormitories: 356

Of the new cases, 99% are linked to known clusters, the rest are pending contact tracing.

201 more cases of COVID-19 infection have been discharged from hospitals or community isolation facilities. To date, 45,893 have fully recovered from the infection and have been discharged from hospitals or community isolation facilities.

Most of the 185 confirmed cases who are still in hospital are stable or improving. None is in the intensive care unit.

5,092 cases who have mild symptoms, or are clinically well but still test positive for COVID-19 are isolated and cared for at community facilities.

27 have passed away from complications due to COVID-19 infection.

Related link: [List of public places visited by confirmed cases in the community during Infectious Period](#)

For more details, refer to MOH's [press release](#).

TOPICS

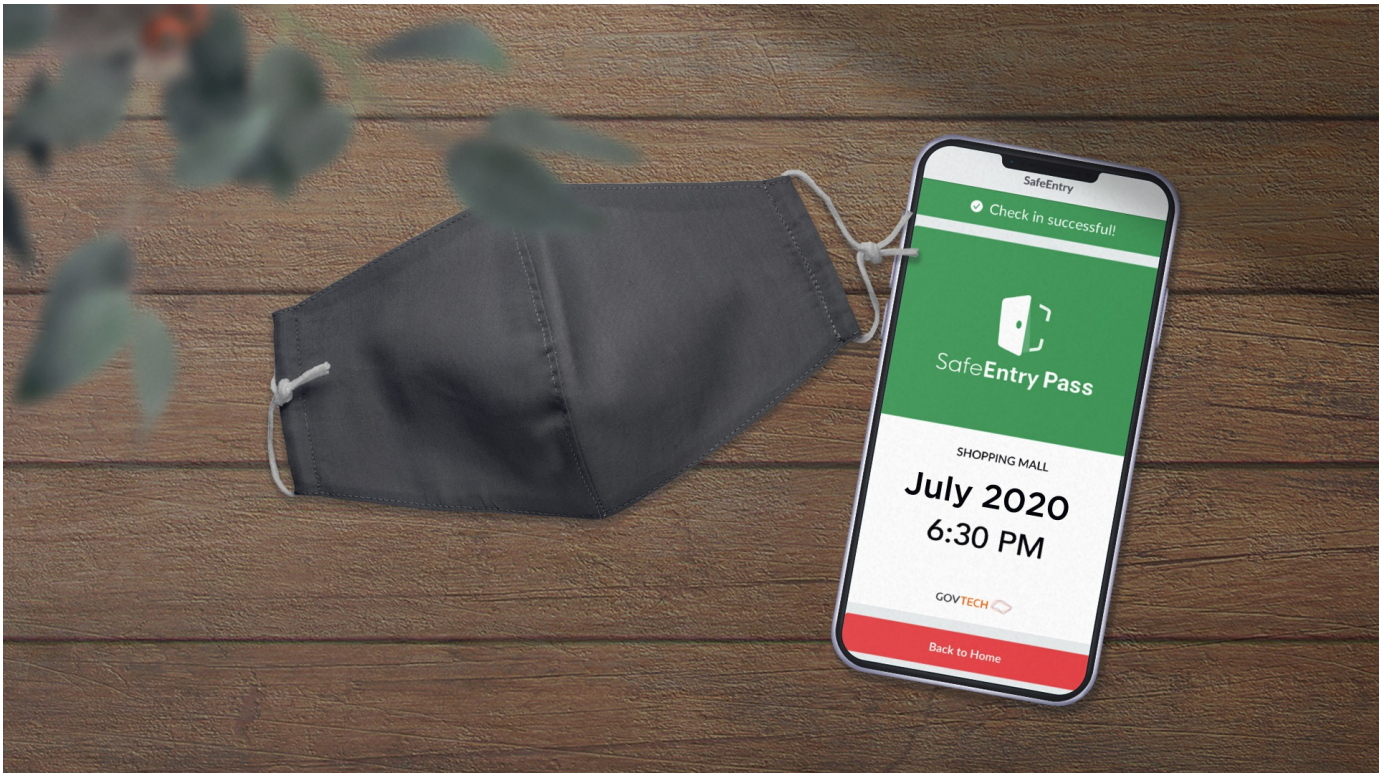
HEALTH

COVID-19

Share: [!\[\]\(339a16584d5da0f0a3ca4e9ec17bf6a1_img.jpg\)](#) [!\[\]\(e06a1d39938b2f5d7a2c3618fea4f77f_img.jpg\)](#) [!\[\]\(23ac9e28f2600a1e787d149d7f76716a_img.jpg\)](#) [!\[\]\(ba1ec627dd10668218bdb3f2bf103f06_img.jpg\)](#) [!\[\]\(6f1d0d0a8d23d26f9f12e58b619db524_img.jpg\)](#) | [!\[\]\(46b6093e477a99fcf269923165e83418_img.jpg\)](#)

PART OF A SPECIAL FEATURE

COVID-19 (Coronavirus Disease 2019)



[EXPLORE](#) 

RELATED ARTICLES



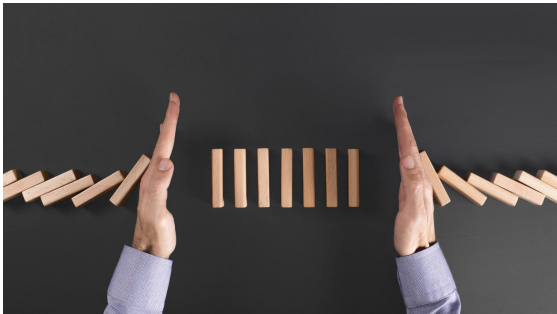
[COVID-19: Updates and announcements](#)



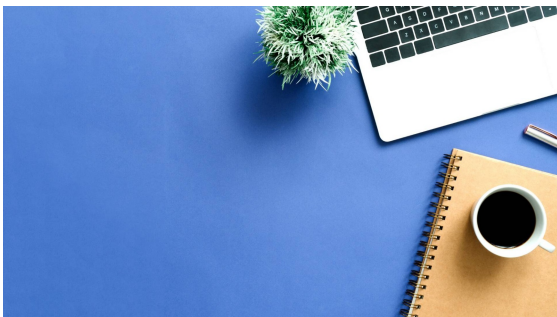
[Enhanced surveillance and enforcement efforts in Phase 2](#)



COVID-19: Advisories for Various Sectors



COVID-19: Keeping our guard up to avoid a resurgence of cases



Gov.sg How-Tos: How to keep safe if you must return to the office

Is this page useful? [Yes](#) · [No](#)

[Is there anything wrong with this page?](#)

Most Popular

Gov.sg How-Tos: How to keep safe when you dine out

Gov.sg How-Tos: How to keep safe when gathering with loved ones

Moving into Phase 2: What activities can resume

Public Places Visited by Cases in the Community during Infectious Period

Updates to border measures for travellers entering Singapore



[Who We Are](#)

[Contact](#)

[FAQ](#)

[Privacy Statement](#)

[Terms of Use](#)

[Rate This Website](#)

[Report Vulnerability](#)



This site is best viewed using IE9.039 & above and Chrome.

© 2020 Government of Singapore Last updated on 28 Jul 2020