

Share :      | 

Listen

As of 2 August 2020, 12pm, the Ministry of Health (MOH) has confirmed 313 new cases of COVID-19 infection in Singapore.

Among the cases:

- Imported case: **5**
 - 2 Work Pass holders, 2 Dependant's Pass holders, 1 Student's Pass holder

Amongst the 5 imported cases, 2 are Work Pass holders who are currently employed in Singapore, and had arrived from India on 19 July and 21 July. Another 2 are Dependant's Pass holders who arrived from Japan and India on 21 July. The remaining case is a Student's Pass holder who arrived from Indonesia on 19 July. All of them had been placed on 14-day Stay-Home Notice (SHN) upon arrival in Singapore, and were serving their SHN at dedicated facilities. They had been tested while serving their SHN.

- Cases in the community: **1**
 - 1 Permanent Resident

There is 1 case in the community today who is linked to a previous case.

Overall, the number of new cases in the community has decreased, from an average of 7 cases per day in the week before, to an average of 2 per day in the past week. The number of unlinked cases in the community has also decreased, from an average of 4 cases per day in the week before, to an average of 1 per day in the past week.

- Cases residing in dormitories: **307**

All the new cases are linked to known clusters.

186 more cases of COVID-19 infection have been discharged from hospitals or community isolation facilities. In all, 46,926 have fully recovered from the infection and have been discharged from hospitals or community care facilities.

Most of the 109 confirmed cases who are still in hospital are stable or improving. None is in the intensive care unit.

5,763 cases who have mild symptoms, or are clinically well but still test positive for COVID-19 are isolated and cared for at community facilities.

27 have passed away from complications due to COVID-19 infection.

Related link: [List of public places visited by confirmed cases in the community during Infectious Period](#)

For more details, refer to MOH's [press release](#).

TOPICS

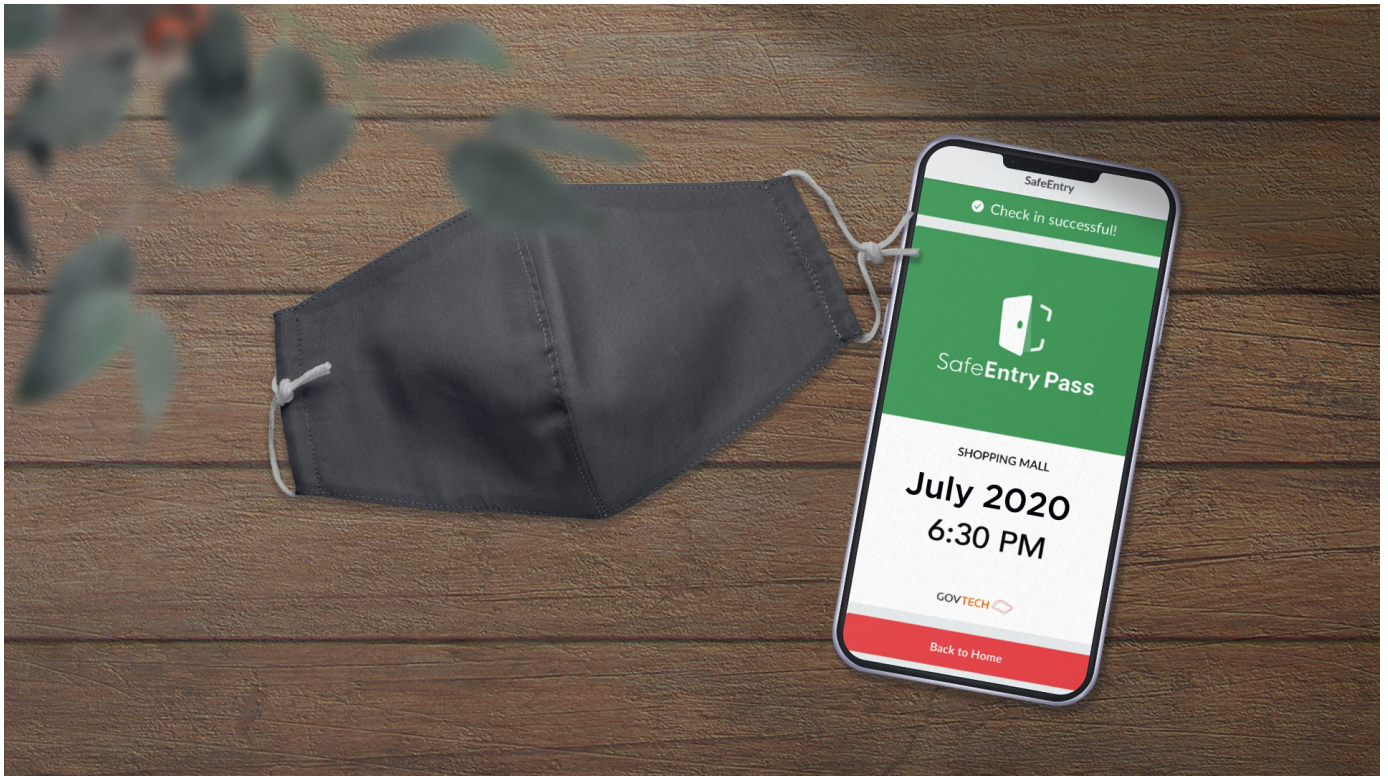
HEALTH

COVID-19

Share: [!\[\]\(339a16584d5da0f0a3ca4e9ec17bf6a1_img.jpg\)](#) [!\[\]\(e06a1d39938b2f5d7a2c3618fea4f77f_img.jpg\)](#) [!\[\]\(23ac9e28f2600a1e787d149d7f76716a_img.jpg\)](#) [!\[\]\(ba1ec627dd10668218bdb3f2bf103f06_img.jpg\)](#) [!\[\]\(6f1d0d0a8d23d26f9f12e58b619db524_img.jpg\)](#) | [!\[\]\(46b6093e477a99fcf269923165e83418_img.jpg\)](#)

PART OF A SPECIAL FEATURE

COVID-19 (Coronavirus Disease 2019)



EXPLORE 

RELATED ARTICLES



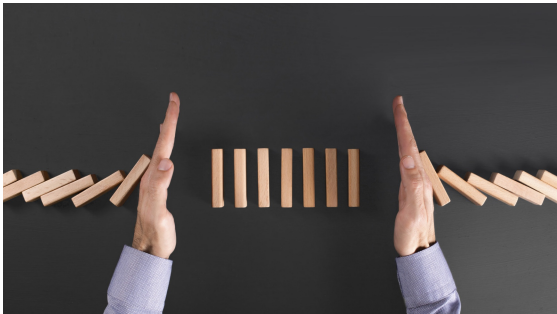
[COVID-19: Updates and announcements](#)



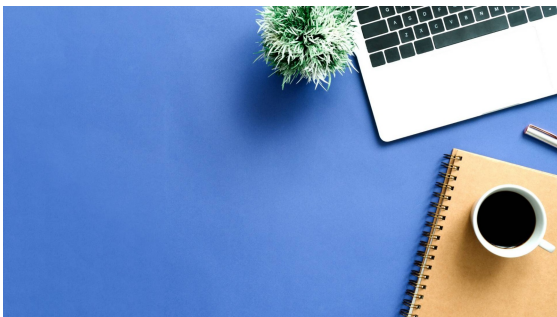
[Enhanced surveillance and enforcement efforts in Phase 2](#)



COVID-19: Advisories for Various Sectors



COVID-19: Keeping our guard up to avoid a resurgence of cases



Gov.sg How-Tos: How to keep safe if you must return to the office

Is this page useful? [Yes](#) • [No](#)

[Is there anything wrong with this page?](#)

Most Popular

Gov.sg How-Tos: How to keep safe when you dine out

Gov.sg How-Tos: How to keep safe when gathering with loved ones

Moving into Phase 2: What activities can resume

Public Places Visited by Cases in the Community during Infectious Period

Updates to border measures for travellers entering Singapore



[Who We Are](#)

[Contact](#)

[FAQ](#)

[Privacy Statement](#)

[Terms of Use](#)

[Rate This Website](#)

[Report Vulnerability](#)



This site is best viewed using IE9.039 & above and Chrome.

© 2020 Government of Singapore Last updated on 02 Aug 2020