

Share :      | 

Listen

As of 3 August 2020, 12pm, the Ministry of Health (MOH) has confirmed 226 new cases of COVID-19 infection in Singapore.

Among the cases:

- Imported case: **9**

- 1 Permanent Resident, 3 Work Pass holders, 2 Work Permit holders, 3 Dependant's Pass holders

Amongst the 9 imported cases, 1 is a Singapore Permanent Resident who returned to Singapore from India on 22 July. Another 5 are Work Pass/ Work Permit holders who are currently employed in Singapore, and had arrived from India, Japan and the Philippines on 22 July. The remaining 3 are Dependant's Pass holders who arrived from India on 20 July and 22 July.

All of them had been placed on 14-day Stay-Home Notice (SHN) upon arrival in Singapore, and were serving their SHN at dedicated facilities.

- Cases in the community: **1**

- 1 Short-Term Visit Pass holder

There is 1 case in the community today who is currently unlinked. The case is a Prison inmate on Short-Term Visit Pass, who had arrived in Singapore before the implementation of border measures. He had served an earlier sentence in Prison prior to his current admission. As part of the Singapore Prison Service's proactive screening of inmates, he had tested negative for COVID-19 for his entry and exit swabs on 2 July and 22 July respectively. He was subsequently tested again for COVID-19 (even though he is asymptomatic), and his test came back positive.

Overall, the number of new cases in the community has decreased, from an average of 5 cases per day in the week before, to an average of 2 per day in the past week. The number of unlinked cases in the community has also decreased, from an average of 3 cases per day in the week before, to an average of 1 per day in the past week.

- Cases residing in dormitories: **216**

Of the new cases, 99% are linked to known clusters, while the rest are pending contact tracing.

253 more cases of COVID-19 infection have been discharged from hospitals or community isolation facilities. In all, 47,179 have fully recovered from the infection and have been discharged from hospitals or community care facilities.

Most of the 115 confirmed cases who are still in hospital are stable or improving. 1 is in critical condition in the intensive care unit.

5,730 cases who have mild symptoms, or are clinically well but still test positive for COVID-19 are isolated and cared for at community facilities.

27 have passed away from complications due to COVID-19 infection.

Related link: [List of public places visited by confirmed cases in the community during Infectious Period](#)

For more details, refer to MOH's [press release](#).

TOPICS

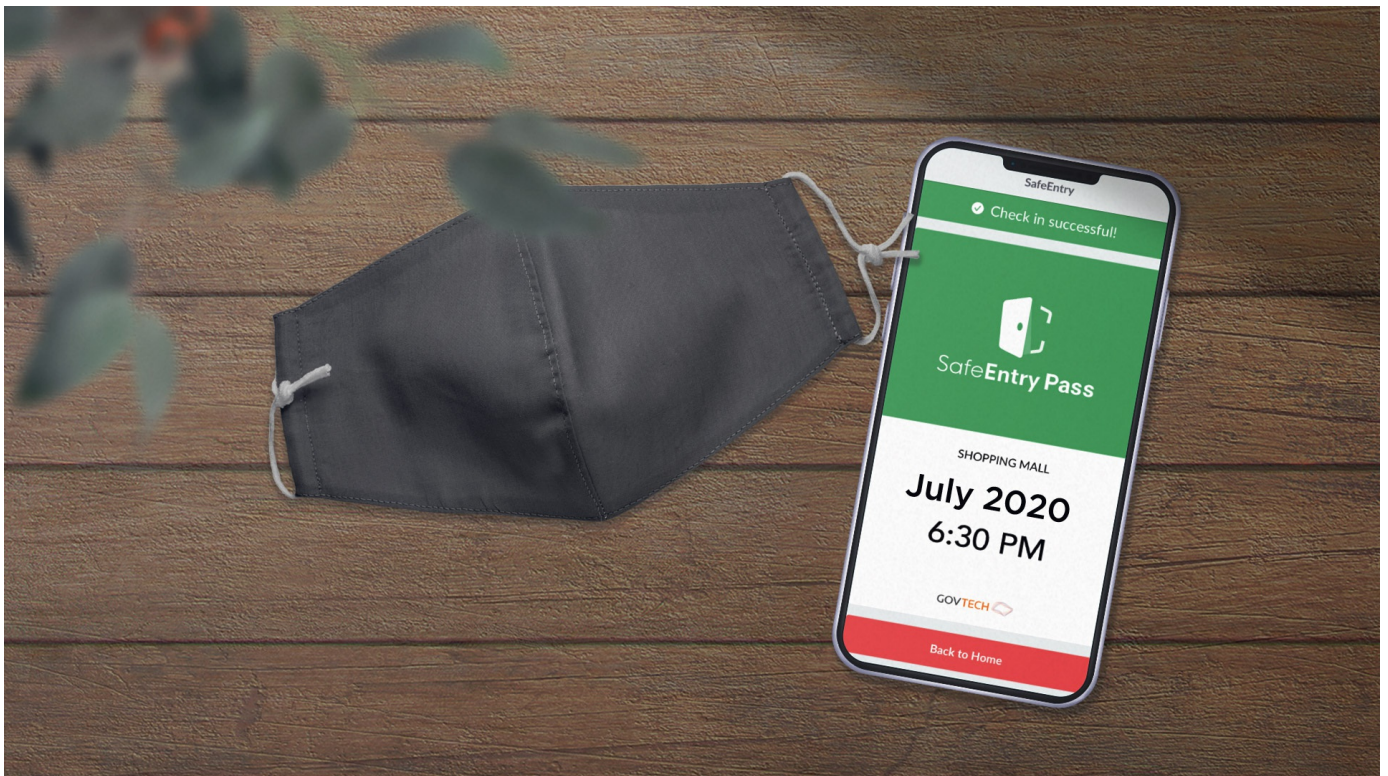
HEALTH

COVID-19

Share:      | 

PART OF A SPECIAL FEATURE

COVID-19 (Coronavirus Disease 2019)



EXPLORE 

RELATED ARTICLES



COVID-19: Updates and announcements



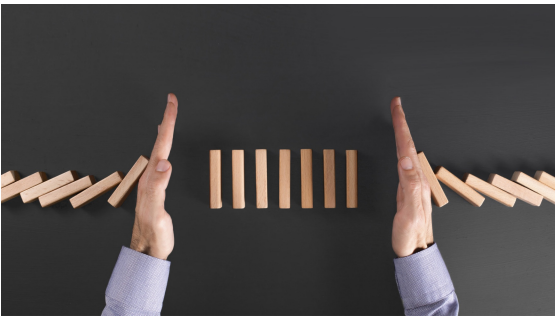
Enhanced surveillance and enforcement efforts in Phase 2



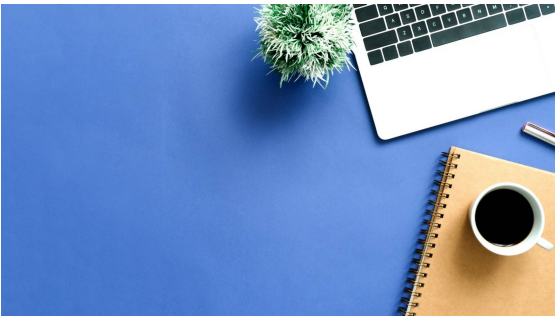
COVID-19: Advisories for Various Sectors



COVID-19: Keeping our guard up to avoid a resurgence of cases



Gov.sg How-Tos: How to keep safe if you must return to the office



Is this page useful? [Yes](#) • [No](#)

[Is there anything wrong with this page?](#)

Most Popular

Gov.sg How-Tos: How to keep safe when you dine out

Gov.sg How-Tos: How to keep safe when gathering with loved ones

Moving into Phase 2: What activities can resume

Public Places Visited by Cases in the Community during Infectious Period

Updates to border measures for travellers entering Singapore



[Who We Are](#)

[Contact](#)

[FAQ](#)

[Privacy Statement](#)

[Terms of Use](#)

[Rate This Website](#)

[Report Vulnerability](#)



This site is best viewed using IE9.039 & above and Chrome.

© 2020 Government of Singapore Last updated on 03 Aug 2020