

Share :      | 

Listen

As of 11 August 2020, 12pm, the Ministry of Health (MOH) has confirmed 61 new cases of COVID-19 infection in Singapore.

Among the cases:

- Imported cases: **3**
  - 2 Long-Term Visit Pass holders, 1 Dependant's Pass holder

Amongst the 3 imported cases, 2 are Long-Term Visit Pass holders who arrived from India on 28 July and 29 July. The remaining case is a Dependant's Pass holder who arrived from India on 30 July.

All of them had been placed on 14-day Stay-Home Notice (SHN) upon arrival in Singapore, and were serving their SHN at dedicated facilities. They had been tested while serving their SHN.

- Cases in the community: **2**
  - 2 Singaporeans

Both of the community cases today are linked to previous cases. are family members who had been identified as contacts of previously confirmed cases. They had been placed on quarantine, and were tested when they reported having symptoms.

Overall, the number of new cases in the community has remained stable at an average of 2 cases per day in the past 2 weeks. The number of unlinked cases in the community has also remained stable at an average of 1 case per day in the past 2 weeks.

- Cases residing in dormitories: **56**

The Inter-agency Taskforce has completed the testing of all workers in the dormitories. There are currently about 22,500 workers who are still serving out their quarantine period. These workers will be tested when their isolation ends, and we expect the case counts to remain high in the coming days, before tapering down thereafter.

Of the new cases, 97% are linked to known clusters, while the rest are pending contact tracing.

519 more cases of COVID-19 infection have been discharged from hospitals or community isolation facilities. In all, 50,128 have fully recovered from the infection and have been discharged from hospitals or community care facilities.

Most of the 104 confirmed cases who are still in hospital are stable or improving. None are in the intensive care unit.

5,094 cases who have mild symptoms, or are clinically well but still test positive for COVID-19 are isolated and cared for at community facilities.

27 have passed away from complications due to COVID-19 infection.

Related link: [List of public places visited by confirmed cases in the community during Infectious Period](#)

For more details, refer to MOH's [press release](#).

## TOPICS

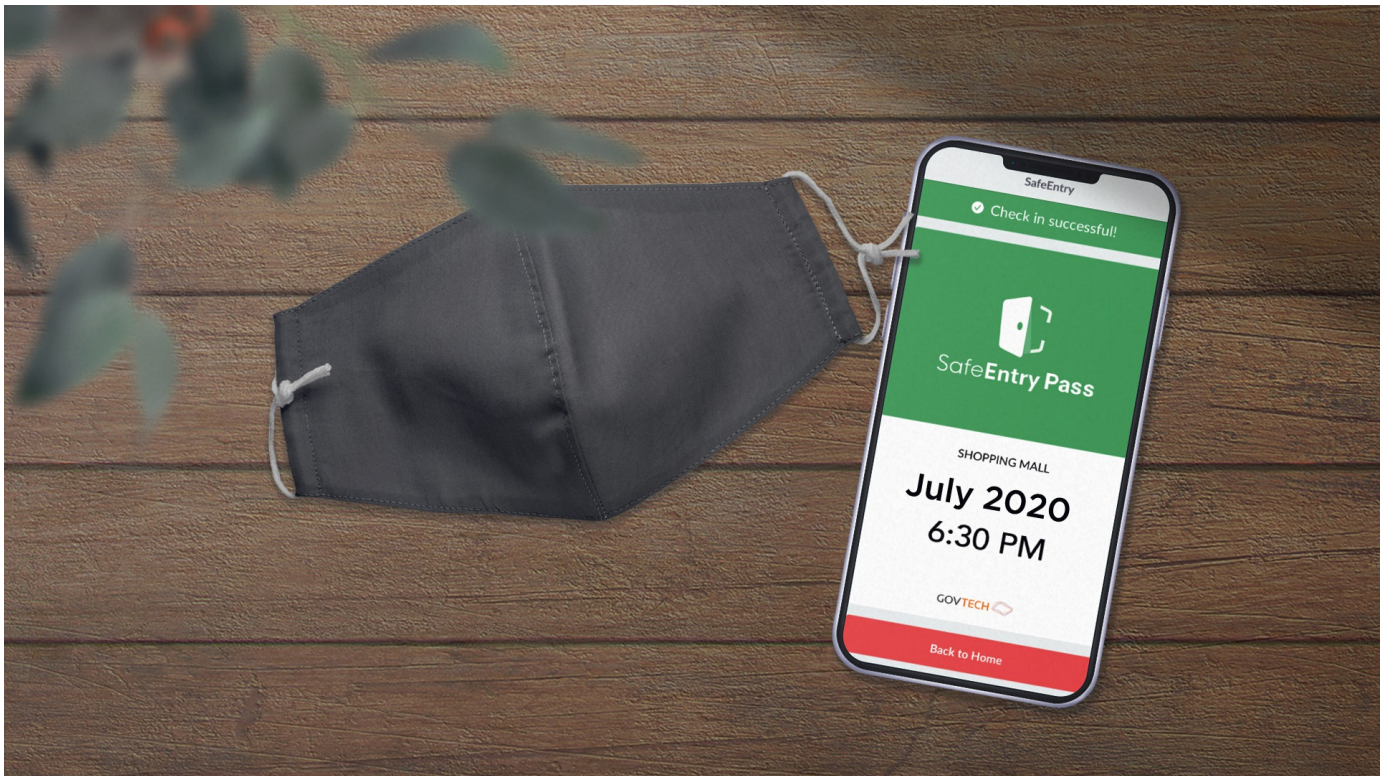
HEALTH

## COVID-19

Share:      | 

### PART OF A SPECIAL FEATURE

## COVID-19 (Coronavirus Disease 2019)



[EXPLORE](#) 

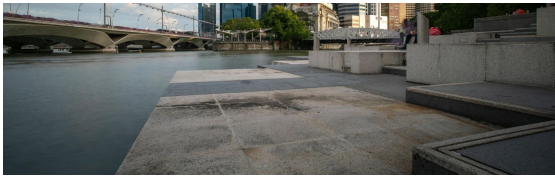
## RELATED ARTICLES



[COVID-19: Updates and announcements](#)



[Further steps towards a new COVID normal](#)



Dengue: Know the symptoms and how to protect yourself



#dontsabo: 6 Gov.sg readers share how they stay safe in Phase 2



Enhanced surveillance and enforcement efforts in Phase 2

Is this page useful? [Yes](#) · [No](#)

Is there anything wrong with this page?

## Most Popular

---

Gov.sg How-Tos: How to keep safe when you dine out

---

Gov.sg How-Tos: How to keep safe when gathering with loved ones

---

Moving into Phase 2: What activities can resume

---

Public Places Visited by Cases in the Community during Infectious Period

---

Updates to border measures for travellers entering Singapore



[Who We Are](#)

[Contact](#)

[FAQ](#)

[Privacy Statement](#)

[Terms of Use](#)

[Rate This Website](#)

[Report Vulnerability](#)



This site is best viewed using IE9.039 & above and Chrome.

© 2020 Government of Singapore Last updated on 11 Aug 2020