

Share :      | 

Listen

As of 19 August 2020, 12pm, the Ministry of Health (MOH) has confirmed 93 new cases of COVID-19 infection in Singapore.

Among the cases:

- Imported cases: **6**
 - 2 Singaporeans, 1 Work Permit holder, 2 Dependant's Pass holders, 1 Student's Pass holder

Amongst the 6 imported cases, 2 are Singaporeans who returned to Singapore from India on 7 August and the UAE on 8 August. 2 other cases are Dependant's Pass holders who arrived from India on 10 August. Another case is a Work Permit holder currently employed in Singapore, who arrived from China on 7 August. The remaining case is a Student's Pass holder who arrived from Vietnam on 7 August. All of them had been placed on 14-day Stay-Home Notice (SHN) upon arrival in Singapore, and had been tested while serving their SHN.

- Cases in the community: **2**
 - 2 Work Permit holders

Both cases in the community were picked up as a result of our proactive surveillance and screening, even though they are asymptomatic.

Overall, the number of new cases in the community has remained stable at an average of 2 cases per day in the past 2 weeks. The number of unlinked cases in the community has also remained stable at an average of 1 case per day in the past 2 weeks.

- Cases residing in dormitories: **85**

The Inter-agency Taskforce has completed the testing of all workers in the dormitories. There are currently about 16,800 workers who are still serving out their quarantine period. These workers will be tested when their quarantine ends, and we expect the case counts to remain high in the coming days, before tapering down thereafter.

Of the new cases, 95% are linked to known clusters, while the rest are pending contact tracing.

277 more cases of COVID-19 infection have been discharged from hospitals or community isolation facilities. In all, 52,810 have fully recovered from the infection and have been discharged from hospitals or community care facilities.

Most of the 87 confirmed cases who are still in hospital are stable or improving. None is in the intensive care unit.

3,107 cases who have mild symptoms, or are clinically well but still test positive for COVID-19 are isolated and cared for at community facilities.

27 have passed away from complications due to COVID-19 infection.

Related link: [List of public places visited by confirmed cases in the community during Infectious Period](#)

For more details, refer to MOH's [press release](#).

TOPICS

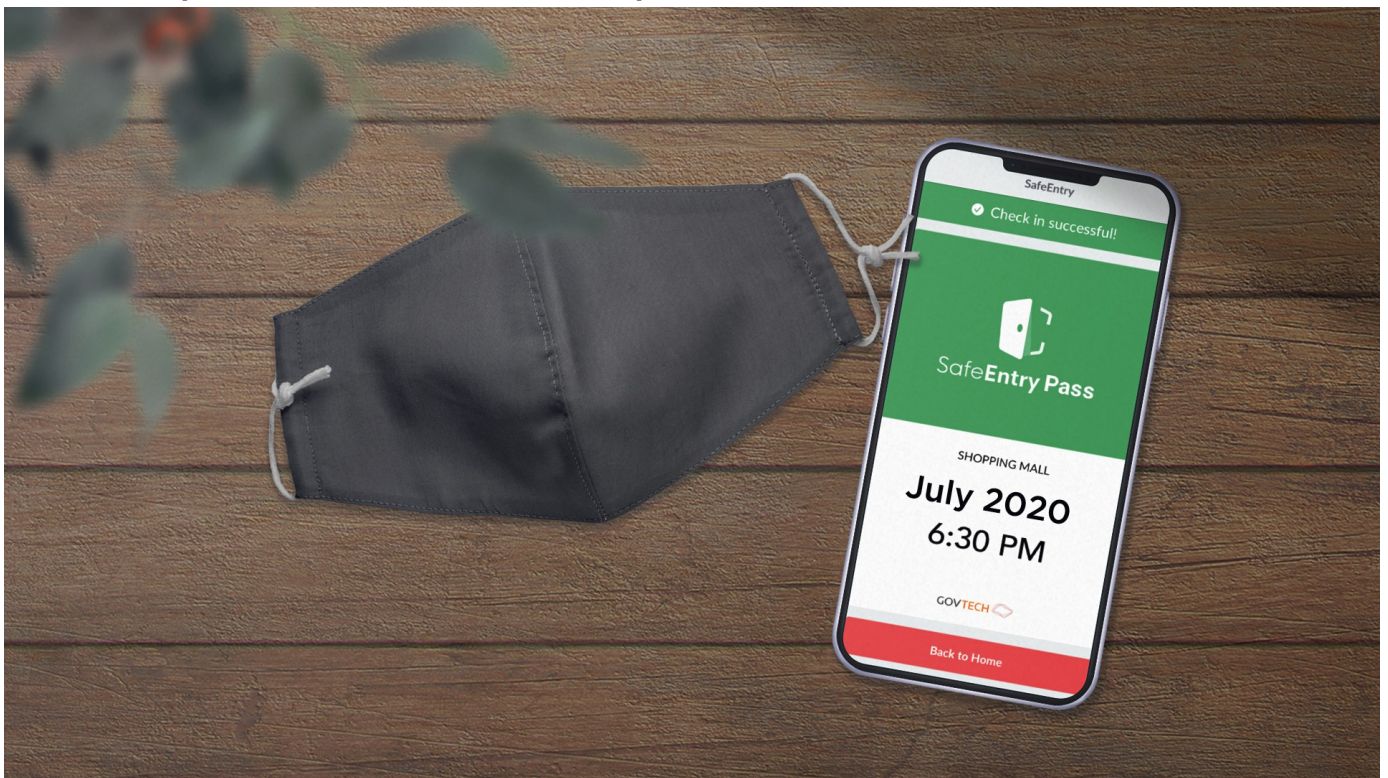
HEALTH

COVID-19

Share: [!\[\]\(de95854c7ee024cfadc48187bbb781b2_img.jpg\)](#) [!\[\]\(cef08d8c15d8a8acd5e25ab0d65432c3_img.jpg\)](#) [!\[\]\(c244836fd67166dc60ebf5279a0f8377_img.jpg\)](#) [!\[\]\(c9651b690bdf1dda88278b8b3445c7b1_img.jpg\)](#) [!\[\]\(3edfc2ea96443450a4381cfaba839e65_img.jpg\)](#) | [!\[\]\(ec9f09bd184045508108979e6580ef04_img.jpg\)](#)

PART OF A SPECIAL FEATURE

COVID-19 (Coronavirus Disease 2019)



[EXPLORE](#) 

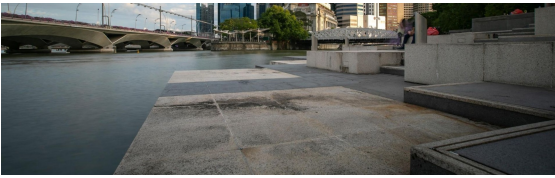
RELATED ARTICLES



[COVID-19: Updates and announcements](#)



[Further steps towards a new COVID normal](#)



Dengue: Know the symptoms and how to protect yourself



#dontsabo: 6 Gov.sg readers share how they stay safe in Phase 2



Enhanced surveillance and enforcement efforts in Phase 2

Is this page useful? [Yes](#) · [No](#)

[Is there anything wrong with this page?](#)

Most Popular

Further steps towards a new COVID normal

Phase Two: Easing of restrictions on key life events

Enhanced surveillance and enforcement efforts in Phase 2

Moving into Phase 2: What activities can resume

Gov.sg How-Tos: How to keep safe when gathering with loved ones



[Who We Are](#)

[Contact](#)

[FAQ](#)

[Privacy Statement](#)

[Terms of Use](#)

[Rate This Website](#)

[Report Vulnerability](#)



This site is best viewed using IE9.039 & above and Chrome.

© 2020 Government of Singapore Last updated on 19 Aug 2020